

Summerwinds


St. George's Hill, Surrey





A large family home Set in generous private grounds approaching 1.02 acres in the centre of St. George’s Hill close to the golf course with a driveway providing privacy.

Weybridge 3 miles, Heathrow 13 miles, M25 (J10) 4 miles, Central London 24 miles.
The A3 and M25 are a short driving distance away as are Weybridge and Walton mainline rail stations
(All distances are approximate)

		
6	6	4

Summary of accommodation

Indoor pool | Passenger lift | Six bedroom suites | Staff flat | Four main reception rooms
Galleried library | Games room | Club room with bar and cinema | Underground parking for six/seven cars
in all about 1.02 acres



Summerwinds

Summerwinds is a four storey house covering all aspects of modern living with indoor pool, spa area, entertainment floor, gym, separate staff flat, passenger lift connecting all floors, and large underground parking area as well as west-facing gardens.

The ground floor there is not only the family/kitchen/breakfast room overlooking the swimming pool and gardens but also a service kitchen for staff.

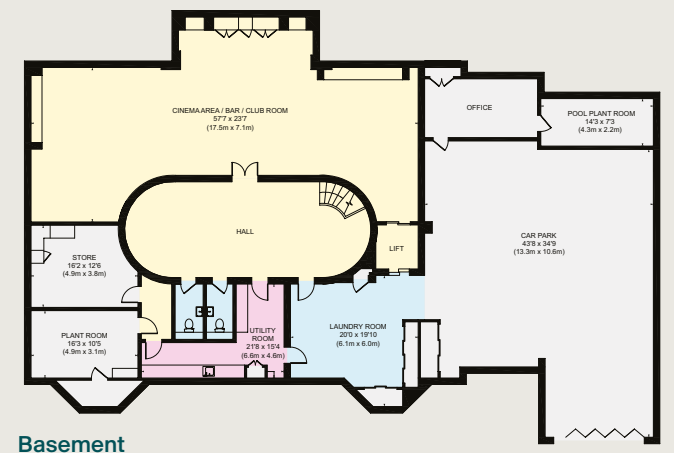
The entertaining spaces on the lower ground floor and top floor are extremely well laid out and services.



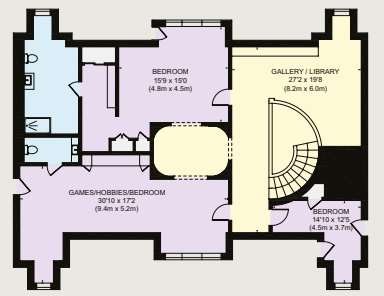
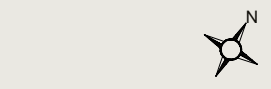




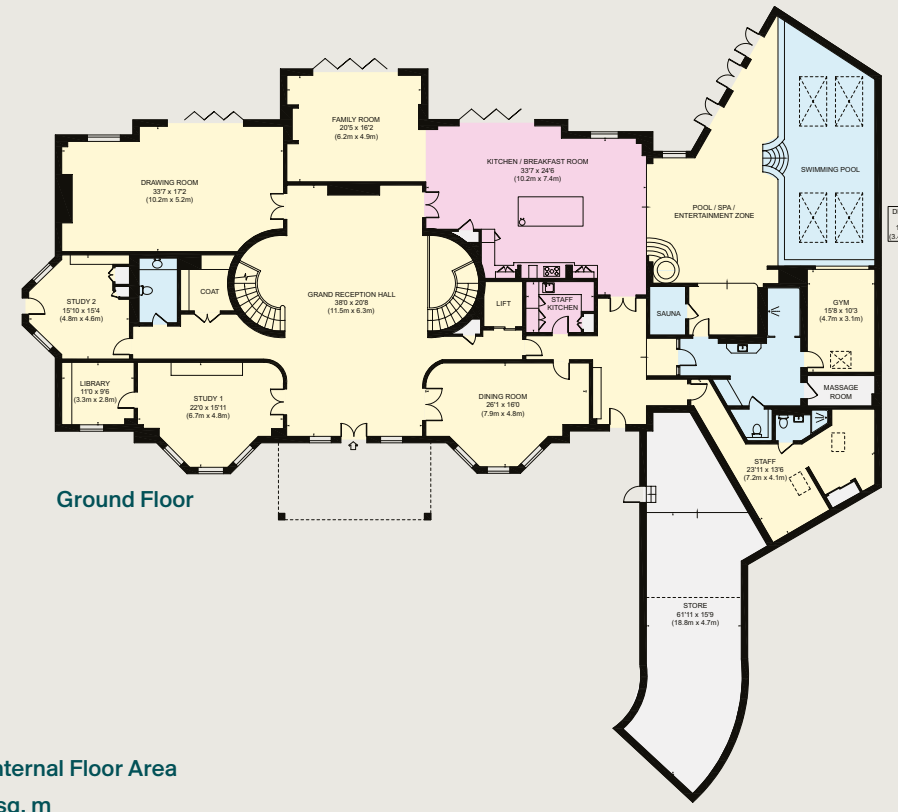
- Reception
- Bedroom
- Bathroom
- Kitchen/Utility
- Storage
- Outside



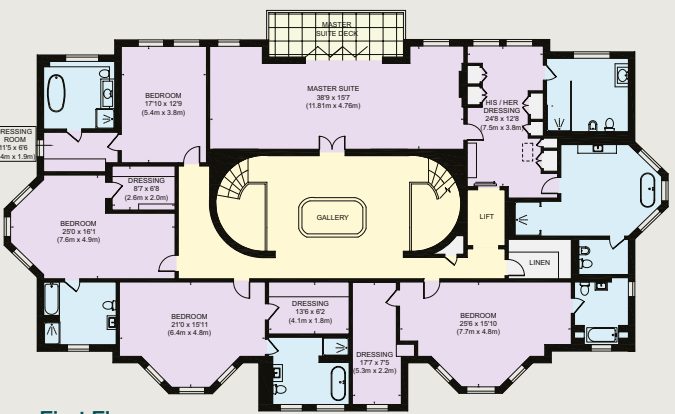
Basement



Second Floor



Ground Floor



First Floor

Approximate Gross Internal Floor Area
17994 sq. ft / 1671.78 sq. m

This plan is for guidance only and must not be relied upon as a statement of fact. Attention is drawn to the Important Notice on the last page of the text of the Particulars.





Gardens & grounds

Externally, secure gates open to a driveway which provides privacy to the front of the house and leads down to a large parking area and ramp into the underground parking space. Summerwinds is set in a westerly-facing plot and has generous gardens running away from the rear of the house, well screened by mature trees and the natural topography of St. George's Hill providing interest and privacy.



Situation

St George's Hill is set on approximately 900 acres and is home to St George's Hill Golf Club and separate Lawn Tennis Club. Close to the centre of Weybridge, the greens and fairways of St George's Hill Golf Club meander through the Estate, whilst the Lawn Tennis, Squash and Croquet Club offers luxurious fitness and an indoor swimming pool. The Estate provides controlled gated security and privacy, offering an ideal community location.



Property Information

Tenure
Freehold

Local Authority
Elmbridge Borough Council

Council Tax
Band H

EPC Rating
B

Directions
Postcode: KT13 ONN
What3words: ///chains.stale.linked

From the Security gate on Old Avenue proceed up Old Avenue, and keep going past the Water Tower, taking the turning right into Golf Club Road, where Summerwinds will be the first property on the right hand side.

Viewings
Viewing is strictly by appointment through Knight Frank.



**Knight Frank Weybridge**

20 High Street
Weybridge
KT13 8AB

Matthew Scott

01932 548001
07966 168911

matthew.scott@knightfrank.com

Knight Frank Country Department

55 Baker Street
London
W1U 8AN

Stuart Cole

020 7861 5101
07968 110002

stuart.cole@knightfrank.com

[knightfrank.co.uk](https://www.knightfrank.co.uk)

Important Notice: 1. Particulars: These particulars are not an offer or contract, nor part of one. You should not rely on statements given by Knight Frank in the particulars, by word of mouth or in writing ("information") as being factually accurate about the property, its condition or its value. Neither Knight Frank nor any joint agent has any authority to make any representations about the property, and accordingly any information given is entirely without responsibility on the part of Knight Frank. 2. Material Information: Please note that the material information is provided to Knight Frank by third parties and is provided here as a guide only. While Knight Frank has taken steps to verify this information, we advise you to confirm the details of any such material information prior to any offer being submitted. If we are informed of changes to this information by the seller or another third party, we will use reasonable endeavours to update this as soon as practical. 3. Photos, Videos etc: The photographs, property videos and virtual viewings etc. show only certain parts of the property as they appeared at the time they were taken. Areas, measurements and distances given are approximate only. 4. Regulations etc: Any reference to alterations to, or use of, any part of the property does not mean that any necessary planning, building regulations or other consent has been obtained. A buyer must find out by inspection or in other ways that these matters have been properly dealt with and that all information is correct. 5. Fixtures and fittings: A list of the fitted carpets, curtains, light fittings and other items fixed to the property which are included in the sale (or may be available by separate negotiation) will be provided by the Seller's Solicitors. 6. VAT: The VAT position relating to the property may change without notice. 7. To find out how we process Personal Data, please refer to our Group Privacy Statement and other notices at <https://www.knightfrank.com/legals/privacy-statement>.

Particulars dated May 2025. Photographs and videos dated April 2025. All information is correct at the time of going to print. Knight Frank is the trading name of Knight Frank LLP. Knight Frank LLP is a limited liability partnership registered in England and Wales with registered number OC305934. Our registered office is at 55 Baker Street, London W1U 8AN. We use the term 'partner' to refer to a member of Knight Frank LLP, or an employee or consultant. A list of members names of Knight Frank LLP may be inspected at our registered office. If you do not want us to contact you further about our services then please contact us by either calling 020 3544 0692, email to marketing.help@knightfrank.com or post to our UK Residential Marketing Manager at our registered office (above) providing your name and address. Brochure by [wordperfectprint.com](https://www.wordperfectprint.com)