



ORNSAY

Wentworth, Surrey



A STUNNING FAMILY HOME ON THE WENTWORTH ESTATE

Summary of accommodation

Reception hall | Cloakroom | Drawing room | Dining room | Open plan kitchen/family/informal dining room
Sitting room | Larder/pantry | Utility room

Excellent principal bedroom suite three further bedroom suites | Two further bedrooms | Two further bathrooms

Air conditioning throughout

Garaging for two cars with self-contained guest/staff apartment above

Tennis court | Beautifully landscaped gardens

Total gross internal floor area approximately 6,867 sq ft (638 sq m)

In all about 1.26 acres (0.51 hectares)

Local Authority: Runnymede Borough Council

Council Tax band: H

Tenure: Freehold

EPC rating: TBC





ORNSAY

Nestled within the prestigious Wentworth Estate, Ornsay is a beautifully designed detached residence, combining classic elegance with modern luxury. Originally built by renowned architect W.G. Tarrant, this exceptional property has been interior designed to offer the very best in contemporary living.

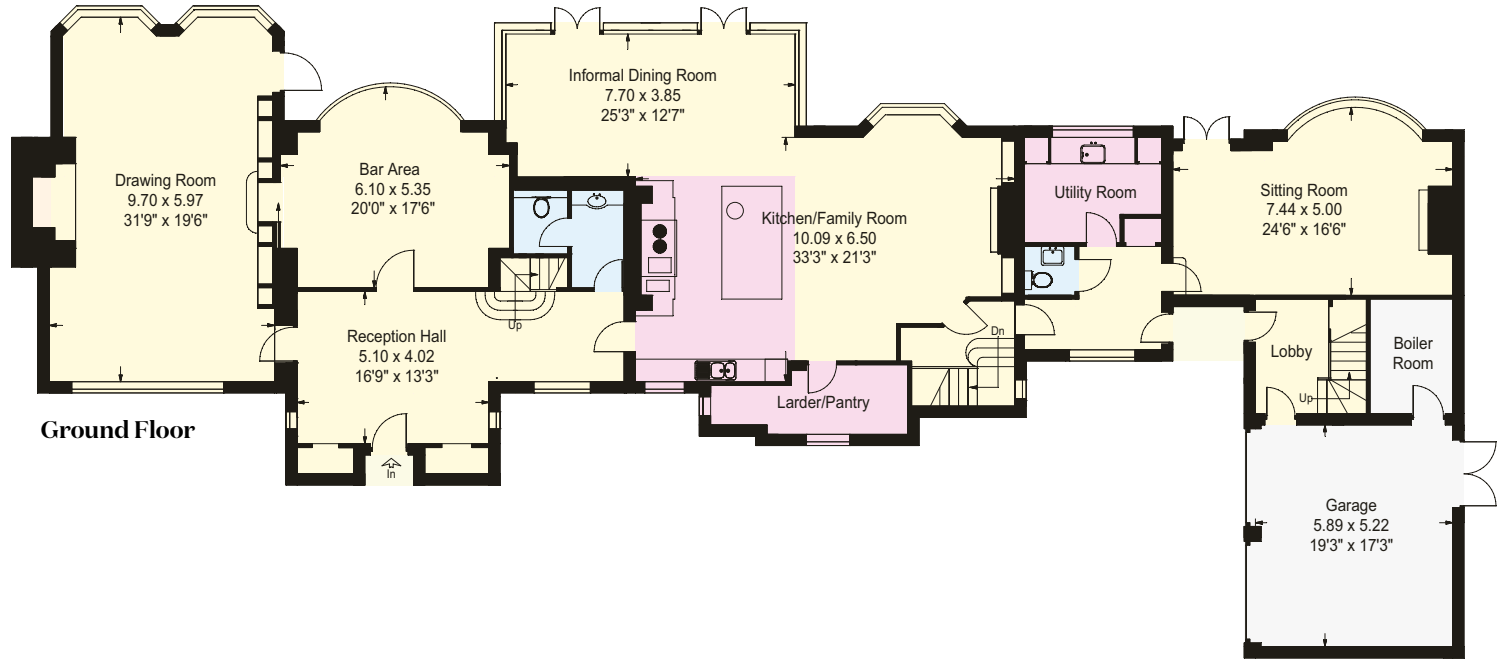
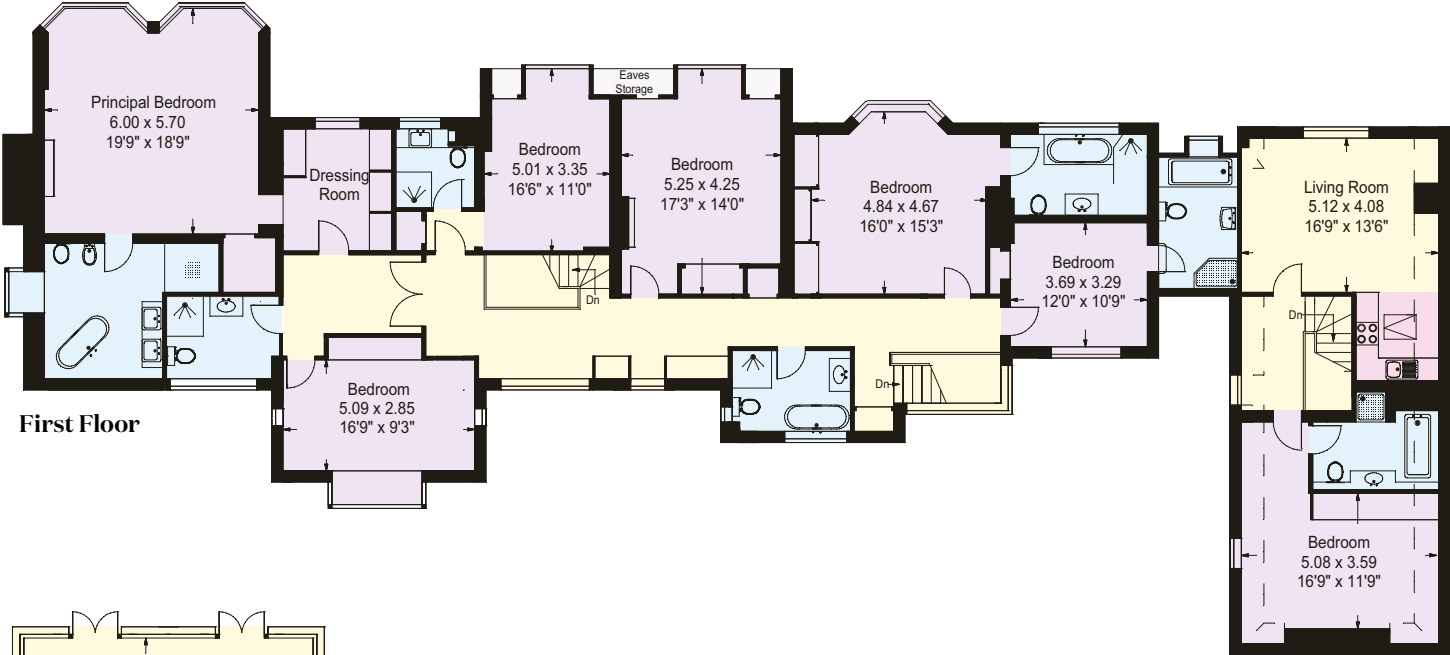
At the heart of the home lies a spacious and inviting kitchen, family, and dining room, perfectly designed for both relaxed family living and entertaining. An impressive bar area with views of the meticulously landscaped garden adds a touch of sophistication, making it an ideal space for gatherings.

The property features six generously sized bedrooms and six bathrooms, ensuring ample space for family and guests. Additionally, a self-contained one bedroom annexe above the double garage offers privacy and convenience





- Reception
- Bedroom
- Bathroom
- Kitchen/Utility
- Storage
- Outside



Approximate Gross Internal Area =
House (Includes Garage & Flat) - 6,867 sq ft (638 sq m)

This plan is for layout guidance only. Not drawn to scale unless stated. Windows and door openings are approximate. Whilst every care is taken in the preparation of this plan, please check all dimensions, shapes and compass bearings before making any decisions reliant upon them.



Externally, Ornsay boasts a beautifully maintained 1.26-acre plot with two sets of electric gates providing both privacy and security. The gardens are thoughtfully designed, with mature trees, shrubs, and a full-size tennis court, perfect for outdoor activities and relaxation.

This is a rare opportunity to acquire a truly magnificent home in one of the most sought-after locations in the country, offering both luxury and tranquillity in equal measure.

LOCATION

Ornsay is positioned on the prestigious Wentworth Estate, which extends to approximately 1,750 acres lying within the Green Belt. Its history dates back to the early 1920s when the visionary developer, W.G. Tarrant purchased an agricultural estate around which he created his rural dream of substantial mansion houses set in beautiful mature gardens surrounding a golf course. Today there are three 18-hole championship golf courses and a 9-hole executive course. In addition there is the Wentworth Club with swimming pools, restaurants, tennis courts and a health and leisure club.

Distances: Ascot 4 miles, Windsor 6 miles, M25 (J13) 3.5 miles, Central London 28 miles (All distances are approximate).



We would be delighted
to tell you more.

Edward Shaw
01344 293140
edward.shaw@knightfrank.com

Knight Frank Ascot & Virginia Water
59 High Street, Ascot
SL5 7HP

George Pratt
020 7861 1166
george.pratt@knightfrank.com

Knight Frank Country Department
55 Baker Street, London
W1U 8AN

knightfrank.co.uk

Your partners in property

1. Particulars: These particulars are not an offer or contract, nor part of one. You should not rely on statements given by Knight Frank in the particulars, by word of mouth or in writing ("information") as being factually accurate about the property, its condition or its value. Neither Knight Frank nor any joint agent has any authority to make any representations about the property, and accordingly any information given is entirely without responsibility on the part of Knight Frank. 2. Material Information: Please note that the material information is provided to Knight Frank by third parties and is provided here as a guide only. While Knight Frank has taken steps to verify this information, we advise you to confirm the details of any such material information prior to any offer being submitted. If we are informed of changes to this information by the seller or another third party, we will use reasonable endeavours to update this as soon as practical. 3. Photos, Videos etc: The photographs, property videos and virtual viewings etc. show only certain parts of the property as they appeared at the time they were taken. Areas, measurements and distances given are approximate only. 4. Regulations etc: Any reference to alterations to, or use of, any part of the property does not mean that any necessary planning, building regulations or other consent has been obtained. A buyer must find out by inspection or in other ways that these matters have been properly dealt with and that all information is correct. 5. Fixtures and fittings: A list of the fitted carpets, curtains, light fittings and other items fixed to the property which are included in the sale (or may be available by separate negotiation) will be provided by the Seller's Solicitors. 6. VAT: The VAT position relating to the property may change without notice. 7. To find out how we process Personal Data, please refer to our Group Privacy Statement and other notices at <https://www.knightfrank.com/legals/privacy-statement>.

Particulars dated March 2025. Photographs and videos dated February 2025. All information is correct at the time of going to print. Knight Frank is the trading name of Knight Frank LLP. Knight Frank LLP is a limited liability partnership registered in England and Wales with registered number OC305934. Our registered office is at 55 Baker Street, London W1U 8AN. We use the term 'partner' to refer to a member of Knight Frank LLP, or an employee or consultant. A list of members names of Knight Frank LLP may be inspected at our registered office. If you do not want us to contact you further about our services then please contact us by either calling 020 3544 0692, email to marketing.help@knightfrank.com or post to our UK Residential Marketing Manager at our registered office (above) providing your name and address.