

# Coneygore

Near Bruton, Somerset








# A secluded retreat immersed in nature.

Bruton 7 miles, Castle Cary 12 miles (London Paddington 1 hour 34 minutes), Salisbury 30 miles  
(All distances and times are approximate)

---

  
4

  
3

  
3

---

## Summary of accommodation

Reception hall | Sitting room | Garden room | Study | Kitchen | Cloakroom | Utility room

Principal bedroom with en suite bathroom | Three further bedrooms, two with en suite facilities | Shower room

Indoor swimming pool complex with adjoining artist's studio

One bedroom self-contained cottage

Double garage | Extensive workshops and storage sheds | Log cabin

Landscaped gardens | Lake | Expansive woodland | Stabling | Paddocks | Direct access to walking, horse riding and cycling.

In all about 43.21 acres



# Location

Coneygore is nestled within an Area of Outstanding Natural Beauty on the Dorset, Somerset, and Wiltshire borders, close to the renowned Stourhead Estate. The nearby town of Bruton, just over 7 miles away, has become a vibrant hub of culture and gastronomy, home to the internationally acclaimed Hauser & Wirth gallery with its restaurant Da Costa and Roth Bar. Michelin-starred Osip, At the Chapel, and curated vintage lifestyle shop Philo and Philo add to the town’s appeal along with the Farm Shop at Durslade.

The Newt is about 10 miles away with fabulous gardens, restaurants and rooms. Just over 20 miles away is Babbington House, part of the Soho House members club. The A303, just over a mile away, provides fast access to London via the M3. Castle Cary station offers services to London Paddington in around 1 hour 34 minutes, while Gillingham station provides links to London Waterloo in just over 2 hours.

There are excellent independent schools nearby including Port Regis, Hazlegrove, Sherborne (Boys and Girls), King’s Bruton, Millfield and Claysmore.

The area offers a wealth of outdoor pursuits, with direct access to walking, riding, and cycling, as well as racing at Wincanton and Bath. Golf is available at Sherborne, Wincanton and Yeovil, with sailing and coastal activities accessible along Dorset’s Jurassic Coast.

# Coneygore

Set within an enchanting 44-acre private estate, Coneygore is a home of architectural character and exceptional privacy. The house sits within its own secluded woodland valley, approached via a winding driveway and surrounded by expansive gardens, rare trees, and tranquil water features.





The property has been extensively improved in recent years, combining timeless craftsmanship with a design philosophy rooted in light, nature, and comfort. Vaulted ceilings, exposed oak beams, and curved internal walls are complemented by large sash windows and skylights, bringing natural light into every corner.

On the ground floor, a welcoming reception hall leads to the drawing room and conservatory/dining room, both offering serene garden views. The study provides a peaceful workspace, while the kitchen and adjoining breakfast area are well appointed for family life and entertaining. Underfloor heating ensures comfort year-round, and air conditioning has been installed in key areas.

Upstairs, the principal suite is a generous, light-filled retreat with views across the estate, a dressing area and private bathroom. Three additional bedrooms include two with en suite bathrooms, each designed with individuality and comfort in mind.

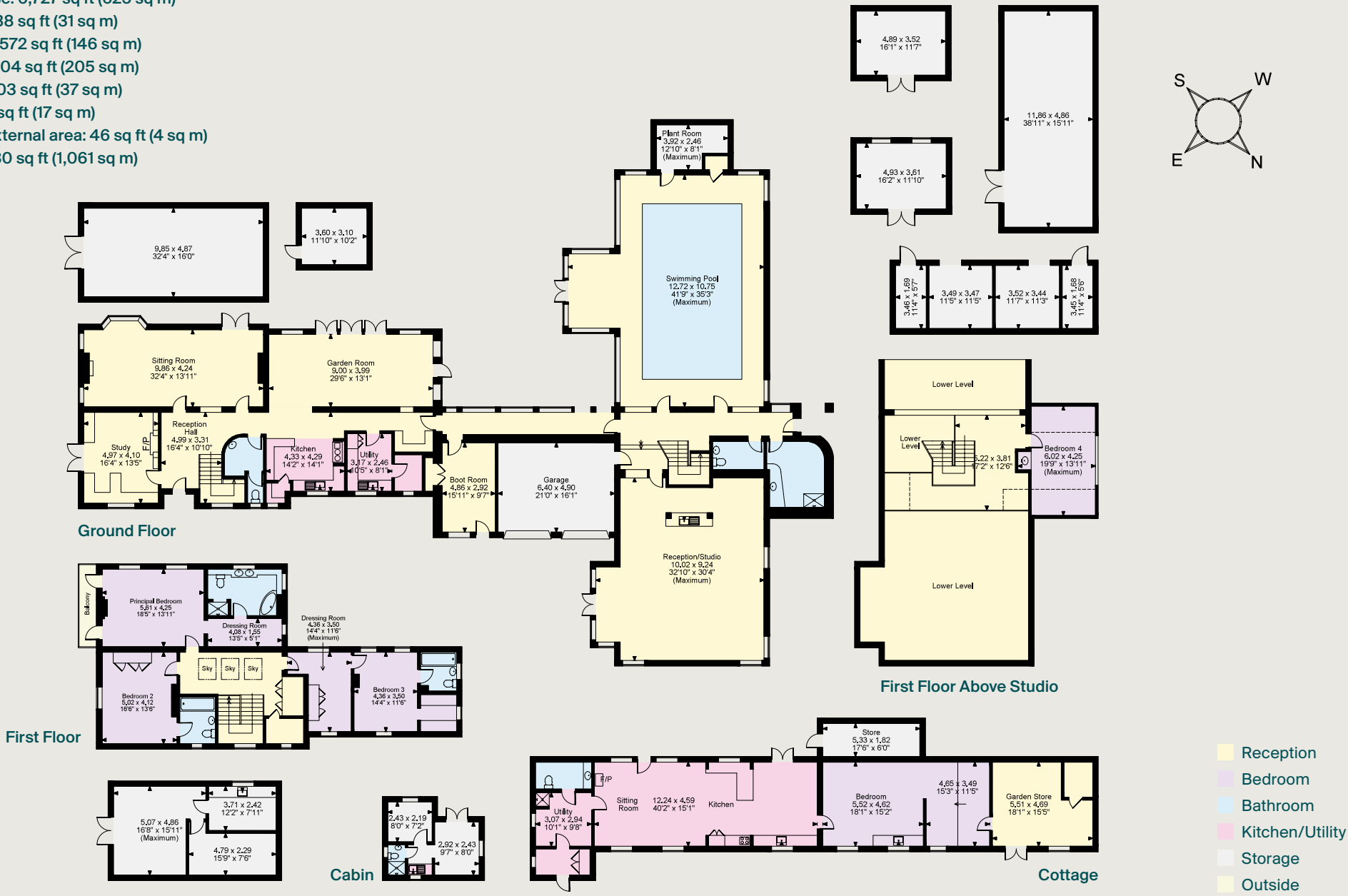






The striking swimming pool complex is a centrepiece of the home, its dramatic timber-framed ceiling echoing the surrounding woodland. Adjoining this space is an inspiring artist's studio with double-height glazing and tranquil garden views.

Approximate Gross Internal Floor Area  
Main House: 6,727 sq ft (625 sq m)  
Garage: 338 sq ft (31 sq m)  
Cottage: 1,572 sq ft (146 sq m)  
Sheds: 2,204 sq ft (205 sq m)  
Stables: 403 sq ft (37 sq m)  
Cabi : 186 sq ft (17 sq m)  
Balcony external area: 46 sq ft (4 sq m)  
Total: 11,430 sq ft (1,061 sq m)



This plan is for guidance only and must not be relied upon as a statement of fact. Attention is drawn to the Important Notice on the last page of the text of the Particulars.



## Cottage

This one bedroom cottage is ideal for guest accommodation and offers the flexibility to be converted to a gymnasium or games room if required. The cottage features a sitting room/kitchen with freestanding wood burner, utility/shower room, cloakroom and double bedroom.

## Outbuildings

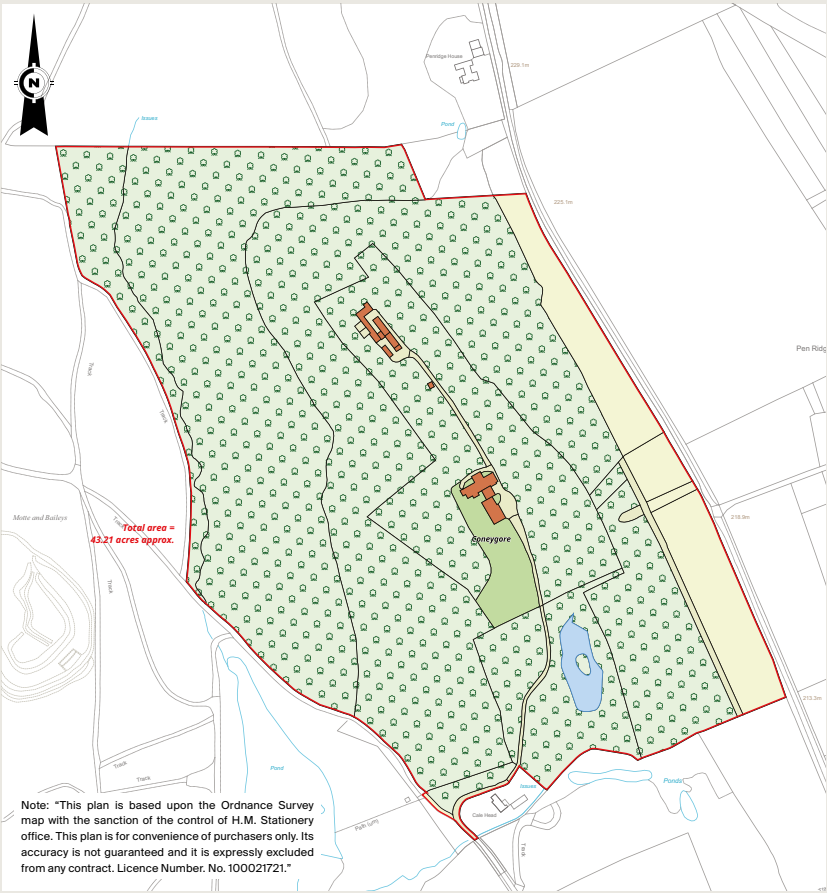
Beyond the main house is a comprehensive collection of outbuildings, including a double garage, well-equipped workshop, and storage barns and a log cabin. Extensive outbuildings to the southeast of the property include a stable block and barn, offering potential for equestrian use.

## Gardens & Grounds

The gardens at Coneygore have been carefully designed to enhance the natural landscape. Terraced lawns flow from the house to a series of seating areas and ponds, framed by mature trees and flowering shrubs. A west-facing decked terrace is perfect for entertaining, with views across the woodland and gardens.

Rare tree specimens, including Davidia involucrata, Japanese maples, red and pin oaks, and scented rhododendrons, are interspersed throughout the grounds. Ancient Ilex trees, believed to date back to the 14th century, provide a historic backdrop to the woodland walks.

A secluded lake with jetty offers a peaceful escape, its still waters bordered by towering hemlocks. A timber-framed summer house completes this magical setting, offering a perfect spot to enjoy the estate's tranquillity.



## Property Information

### Services

Mains water, electricity and drainage. Mains gas central heating with underfloor heating on the ground floor.

### Tenure

Freehold

### Local Authority

Somerset Council

### Council Tax

BandG

### EPC Rating

Coneygore: E

The Cottage: F

### Directions

Postcode: BA9 8LP

What3words: //offerings.nuzzling.barrel

### Viewings

Viewing is strictly by appointment through Knight Frank.

**Knight Frank Bath**

4 Wood Street

Bath

BA1 2JQ

**Knight Frank Country Department**

55 Baker Street

London

W1U 8AN

**Francesca Leighton Scott**

01225 325994

francesca.leighton-scott@knightfrank.com

**Hamish Humfrey**

020 7861 1717

hamish.humfrey@knightfrank.com

**[knightfrank.co.uk](https://knightfrank.co.uk)****[knightfrank.co.uk](https://knightfrank.co.uk)**

Important Notice: 1. Particulars: These particulars are not an offer or contract, nor part of one. You should not rely on statements given by Knight Frank in the particulars, by word of mouth or in writing ("information") as being factually accurate about the property, its condition or its value. Neither Knight Frank nor any joint agent has any authority to make any representations about the property, and accordingly any information given is entirely without responsibility on the part of Knight Frank. 2. Material Information: Please note that the material information is provided to Knight Frank by third parties and is provided here as a guide only. While Knight Frank has taken steps to verify this information, we advise you to confirm the details of any such material information prior to any offer being submitted. If we are informed of changes to this information by the seller or another third party, we will use reasonable endeavours to update this as soon as practical. 3. Photos, Videos etc: The photographs, property videos and virtual viewings etc. show only certain parts of the property as they appeared at the time they were taken. Areas, measurements and distances given are approximate only. 4. Regulations etc: Any reference to alterations to, or use of, any part of the property does not mean that any necessary planning, building regulations or other consent has been obtained. A buyer must find out by inspection or in other ways that these matters have been properly dealt with and that all information is correct. 5. Fixtures and fittings: A list of the fitted carpets, curtains, light fittings and other items fixed to the property which are included in the sale (or may be available by separate negotiation) will be provided by the Seller's Solicitors. 6. VAT: The VAT position relating to the property may change without notice. 7. To find out how we process Personal Data, please refer to our Group Privacy Statement and other notices at <https://www.knightfrank.com/legals/privacy-statement>.

Particulars dated April 2025. Photographs and videos dated March 2025. All information is correct at the time of going to print. Knight Frank is the trading name of Knight Frank LLP. Knight Frank LLP is a limited liability partnership registered in England and Wales with registered number OC305934. Our registered office is at 55 Baker Street, London W1U 8AN. We use the term 'partner' to refer to a member of Knight Frank LLP, or an employee or consultant. A list of members names of Knight Frank LLP may be inspected at our registered office. If you do not want us to contact you further about our services then please contact us by either calling 020 3544 0692, email to [marketing.help@knightfrank.com](mailto:marketing.help@knightfrank.com) or post to our UK Residential Marketing Manager at our registered office (above) providing your name and address. Brochure by [wordperfectprint.com](https://wordperfectprint.com)