



## SILVER STREET FARM

Prescott, Devon





# A BEAUTIFULLY RESTORED GEORGIAN FARMHOUSE

Set in the heart of Devon's rolling countryside, with exceptional mature gardens, traditional outbuildings and a cottage.

## Summary of accommodation

**Ground Floor:** Drawing room | Dining room | Family room | Kitchen/breakfast room | Snug | Utility room/boot room | WC

**First Floor:** Principal bedroom with dressing room and bathroom | Further four double bedrooms | Family bathroom

**Second Floor:** Three double bedrooms | Family bathroom

**Pear Tree Cottage:** Double bedroom | Bathroom | Open plan kitchen and sitting room | WC

Award winning landscaped gardens | Events barn | Cinema room | | Courtyard  
Stabling | Storage | Carport | Greenhouse | Wildflower meadow

Paddocks and pastureland

**In all about 9.6 acres**

**Further 12.8 acres available by separate negotiation**

**Distances:** Culmstock 1 mile, Tiverton Parkway 4.7 miles (London Paddington 1hr 53 mins), M5 (Junction 27) 4.3 miles  
Wellington 7.2 miles, Exeter 21 miles, Bristol Airport 49 miles (All distances and times are approximate)



# SITUATION

Silver Street Farm is a handsome Grade II listed house which combines period charm with modern country living. Surrounded by award winning gardens, traditional outbuildings, and open paddocks, it offers peace, privacy, and space. With far-reaching views and a sought-after location in the Culm Valley, this is a rare opportunity to own a historic home with exceptional grounds. It is located just over a mile from the thriving village of Culmstock. Set on the edge of the Blackdown Hills Area of Outstanding Natural Beauty, it enjoys unspoilt rural views with easy access to local amenities. Culmstock provides an excellent pub, café and deli, village hall, primary school, cricket club, gym, and church. The property also offers easy access to the beaches in North and East Devon/Jurassic coast.

The nearby market town of Wellington has a Waitrose, independent shops and an award-winning butcher. Cullompton offers similar facilities, while Tiverton, ten miles to the west, has a pannier market, a wider selection of shops, and leisure facilities.

The area is well served by highly regarded schools, including Wellington School, Blundells in Tiverton and Kings College and Queens College in Taunton. Silver Street Farm is also in the catchment for Uffculme School, an outstanding rated state secondary.

Transport links are excellent. The M5 at Tiverton (Junction 27) provides fast connections to Exeter, Wellington, Taunton and Bristol, while Tiverton Parkway Station (Junction 27) offers direct rail services to London Paddington. Both Exeter and Bristol International Airports provide regular flights to UK and international destinations.

# SILVER STREET FARM

Silver Street Farm is approached from the south by a gravel driveway, lined with wildflower meadows and estate fencing. The drive leads to a generous turning area in front of the farmhouse and the adjacent Pear Tree Cottage.







Beyond lies a traditional courtyard of outbuildings, adorned with fruit trees and roses. The house is perfectly framed by planting which evolves with the seasons and gives interest throughout the year

The Georgian farmhouse has been stylishly restored, preserving its original character while creating a welcoming and comfortable home. The ground floor is arranged around a central entrance hall, with a drawing room and dining room on either side, both featuring fireplaces. A family room and snug provide additional living space, while the fantastic kitchen sits at the rear of the house, opening onto a terrace and into the idyllic gardens. A large utility connects the main house to the events barn, making it ideal for entertaining.

On the first floor, the principal suite includes a private bathroom and dressing room. There are four further double bedrooms on this level, all sharing a well-appointed family bathroom. The second floor provides three additional bedrooms, a family bathroom, and a large airing cupboard.



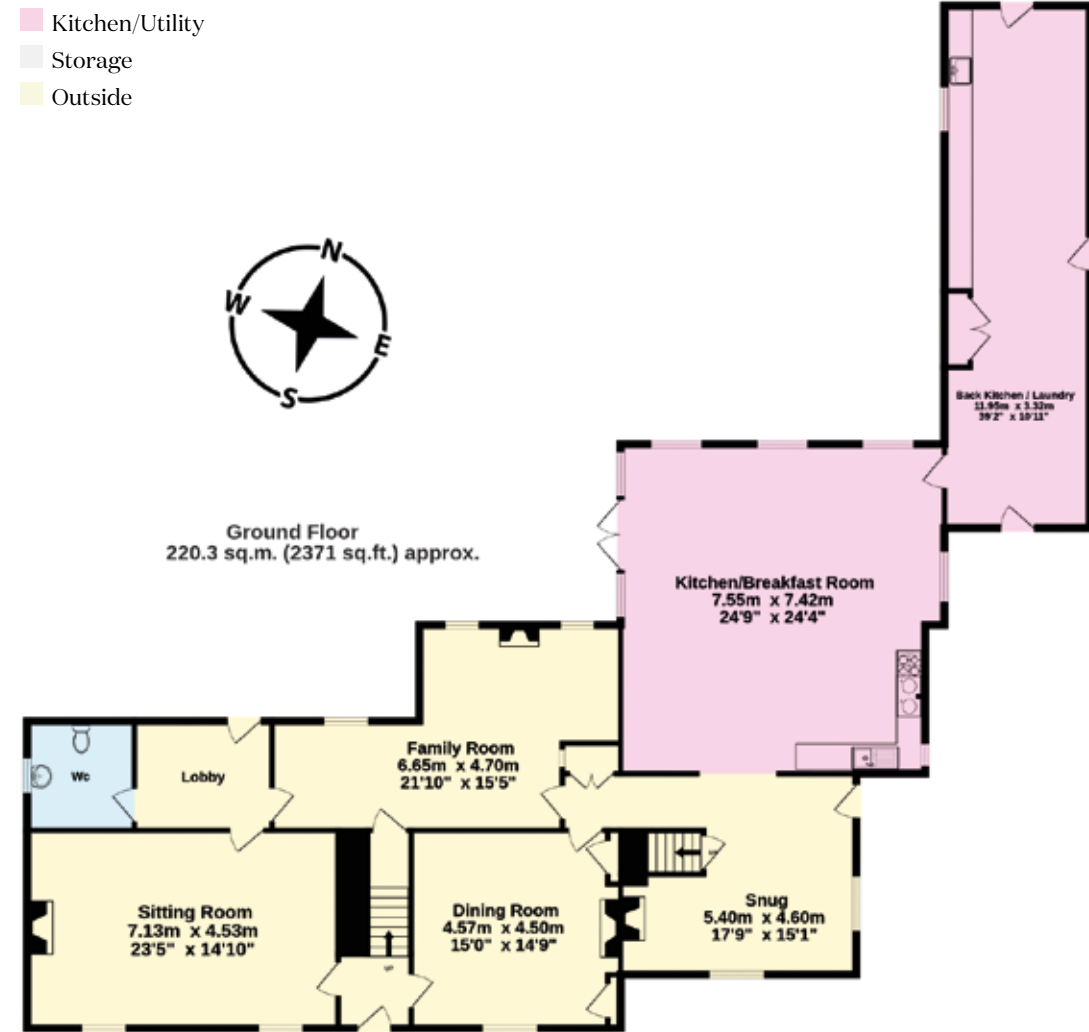




- Reception
- Bedroom
- Bathroom
- Kitchen/Utility
- Storage
- Outside

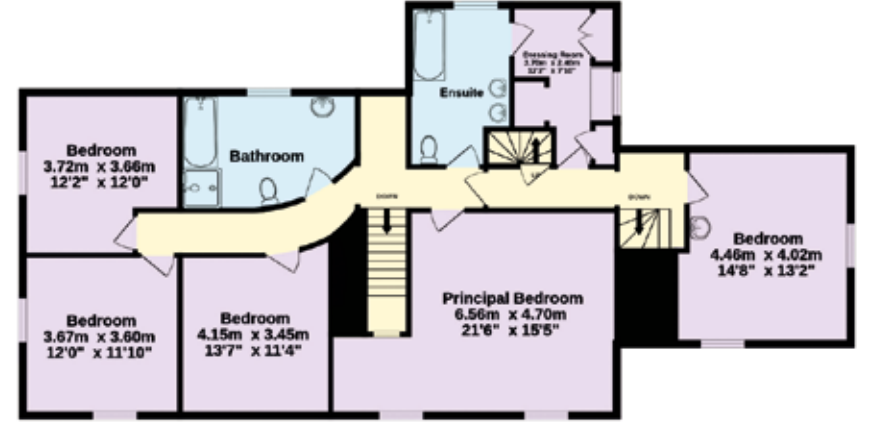


Ground Floor  
220.3 sq.m. (2371 sq.ft.) approx.

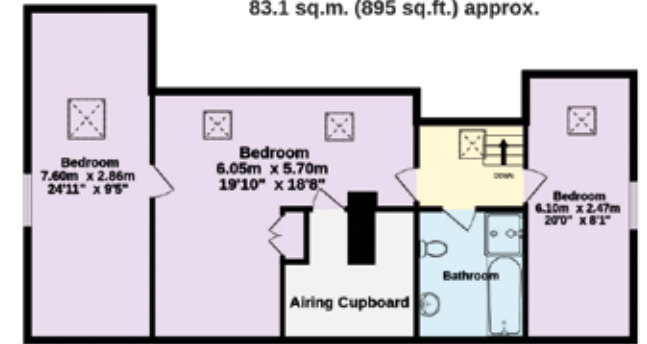


Approximate Gross Internal Area  
433.5 sq m (4666 sq ft)

1st Floor  
130.1 sq.m. (1400 sq.ft.) approx.



2nd Floor  
83.1 sq.m. (895 sq.ft.) approx.



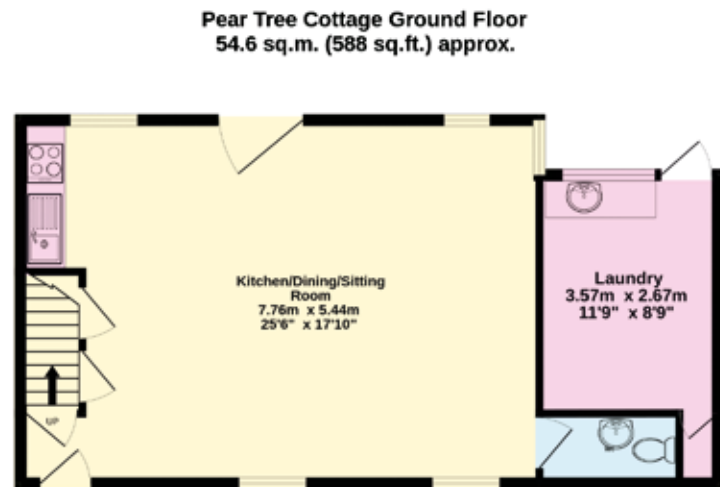
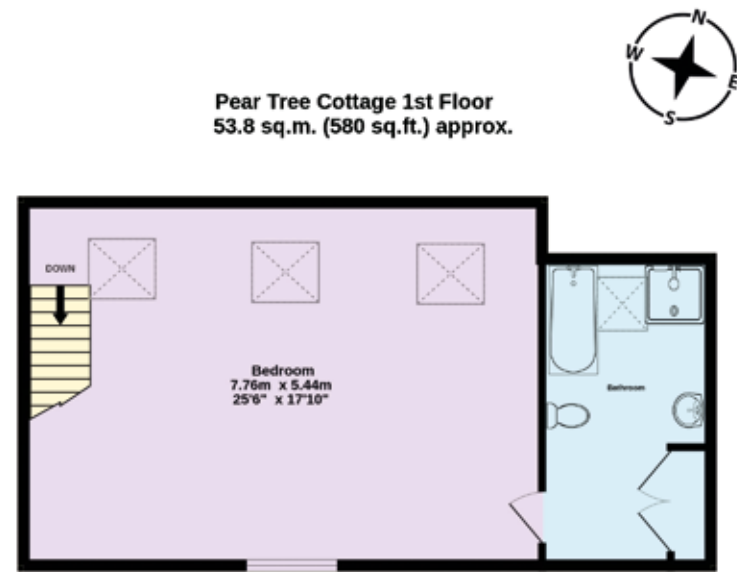
This plan is for layout guidance only. Not drawn to scale unless stated. Windows and door openings are approximate. Whilst every care is taken in the preparation of this plan, please check all dimensions, shapes and compass bearings before making any decisions reliant upon them.





## PEAR TREE COTTAGE

Pear Tree Cottage provides generous and flexible accommodation for guests, staff, or multi-generational living. The ground floor has an open-plan kitchen and living space with a cloakroom, while the first floor features a spacious bedroom and en suite bathroom.



Approximate Gross Internal Area  
108.4 sq m (1167 sq ft)



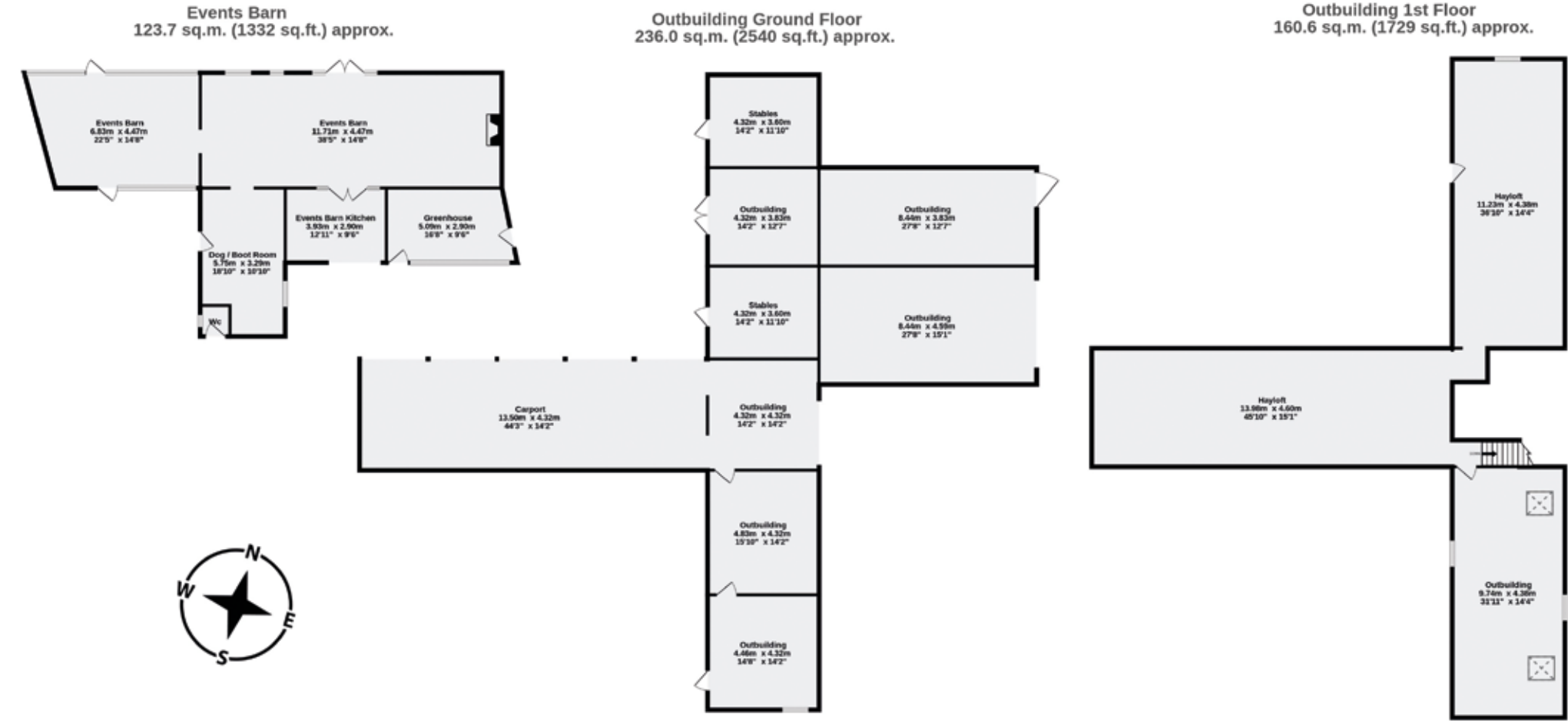


# THE EVENTS BARN

The events barn is a spectacular space, designed for both entertaining and practical use. The main hall is bright and airy, with a mezzanine sitting area and with cinema room at one end. A kitchen area, boot room, and WC make it a highly adaptable space.



- Reception
- Bedroom
- Bathroom
- Kitchen/Utility
- Storage
- Outside



Approximate Gross Internal Area  
520.4 sq m (5601 sq ft)

This plan is for layout guidance only. Not drawn to scale unless stated. Windows and door openings are approximate. Whilst every care is taken in the preparation of this plan, please check all dimensions, shapes and compass bearings before making any decisions reliant upon them.



# GARDEN AND GROUNDS

The house, outbuildings and the beautiful gardens all work completely in harmony with each other. The grounds have been creatively designed to give colour, texture and atmosphere throughout the seasons. Sweeping lawns are framed with mature borders, neat topiary, and terraces that allow the house and setting to connect with each other at all times of year. A stream runs along the western boundary, while a kitchen garden and woodland sit to the north.







Within the courtyard the outbuildings include a linhay barn with car port beneath, stables, feed stores and tack rooms. There is also a large hayloft above, which provides potential for future conversion, subject to the necessary consents. The surrounding land is pastureland. In all the property extends to approximately 9.6 acres.

## ADDITIONAL LAND

There are two additional parcels of land to the south and east, extending to about 12.8 acres, which are available by separate negotiation.

## PROPERTY INFORMATION

**Postcode:** EX15 3BA

**What3words:** ///thigh.elects.encrusted

**Tenure:** Freehold

**Local Authority:** Devon County Council

**Council Tax:**

Main House: Band F

Pear Tree Cottage: Band TBC

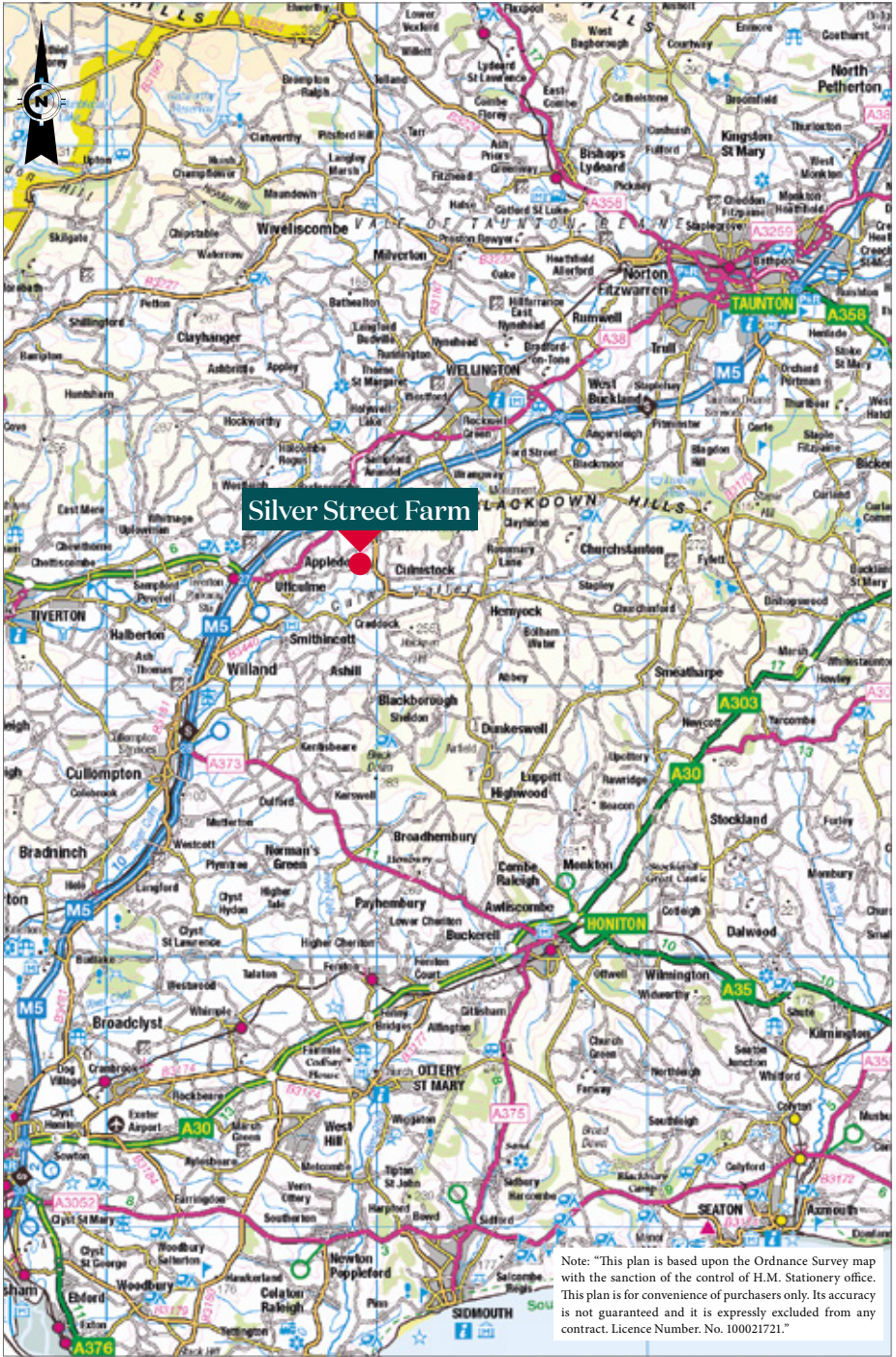
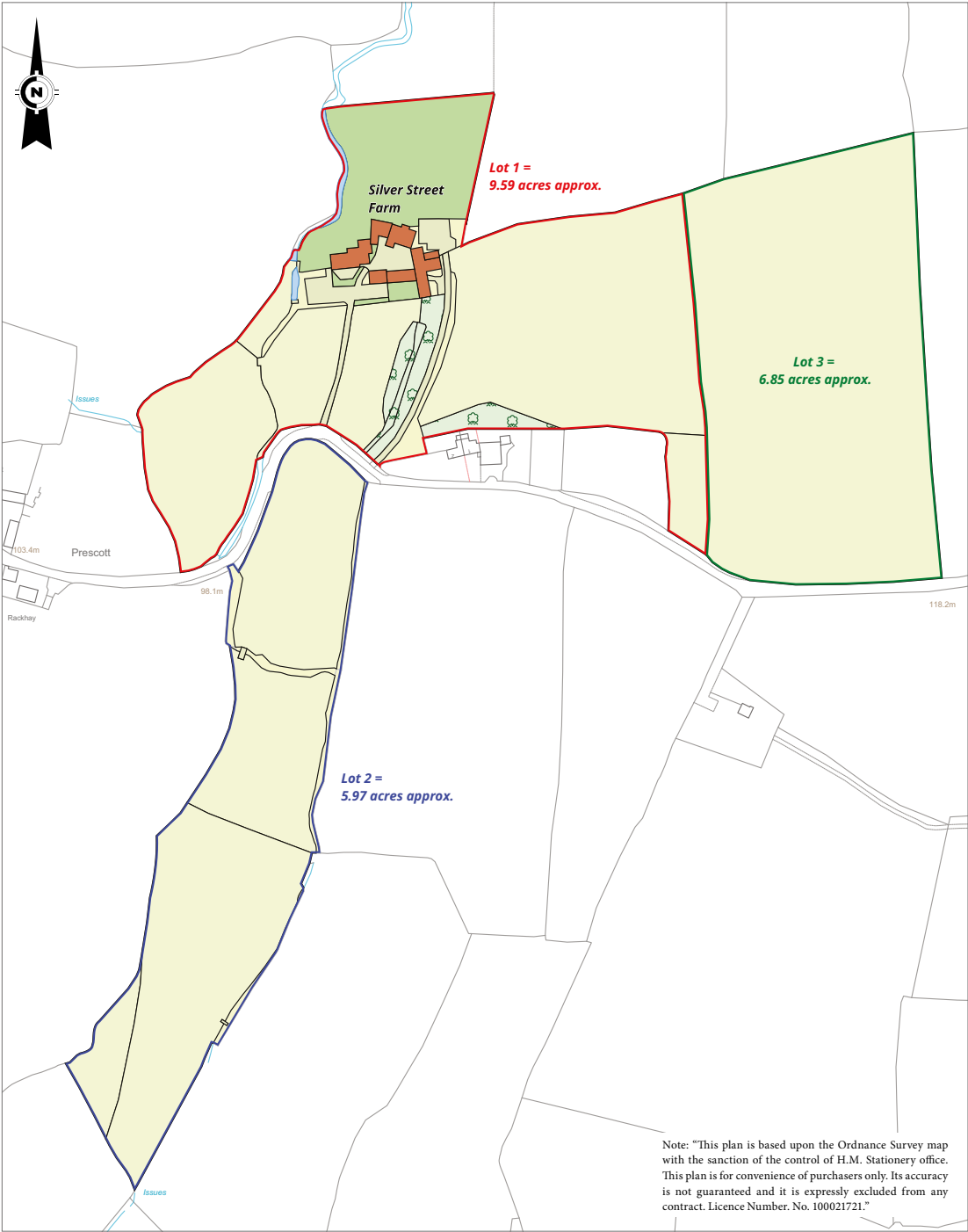
**EPC Ratings:**

Main House – E

Pear Tree Cottage – D









We would be delighted  
to tell you more.

**Florence Biss**  
01392 423111  
florence.biss@knightfrank.com

**Knight Frank Exeter**  
19 Southernhay East, Exeter  
EX1 1QD

**Sarah Brown**  
020 7590 2451  
sarah.ka.brown@knightfrank.com

**Knight Frank Country Department**  
55 Baker Street, London  
W1U 8AN

[knightfrank.co.uk](https://knightfrank.co.uk)

Your partners in property

1. Particulars: These particulars are not an offer or contract, nor part of one. You should not rely on statements given by Knight Frank in the particulars, by word of mouth or in writing ("information") as being factually accurate about the property, its condition or its value. Neither Knight Frank nor any joint agent has any authority to make any representations about the property, and accordingly any information given is entirely without responsibility on the part of Knight Frank. 2. Material Information: Please note that the material information is provided to Knight Frank by third parties and is provided here as a guide only. While Knight Frank has taken steps to verify this information, we advise you to confirm the details of any such material information prior to any offer being submitted. If we are informed of changes to this information by the seller or another third party, we will use reasonable endeavours to update this as soon as practical. 3. Photos, Videos etc: The photographs, property videos and virtual viewings etc. show only certain parts of the property as they appeared at the time they were taken. Areas, measurements and distances given are approximate only. 4. Regulations etc: Any reference to alterations to, or use of, any part of the property does not mean that any necessary planning, building regulations or other consent has been obtained. A buyer must find out by inspection or in other ways that these matters have been properly dealt with and that all information is correct. 5. Fixtures and fittings: A list of the fitted carpets, curtains, light fittings and other items fixed to the property which are included in the sale (or may be available by separate negotiation) will be provided by the Seller's Solicitors. 6. VAT: The VAT position relating to the property may change without notice. 7. To find out how we process Personal Data, please refer to our Group Privacy Statement and other notices at <https://www.knightfrank.com/legals/privacy-statement>.

Particulars dated April 2025. Photographs and videos dated 2024. All information is correct at the time of going to print. Knight Frank is the trading name of Knight Frank LLP. Knight Frank LLP is a limited liability partnership registered in England and Wales with registered number OC305934. Our registered office is at 55 Baker Street, London W1U 8AN. We use the term 'partner' to refer to a member of Knight Frank LLP, or an employee or consultant. A list of members names of Knight Frank LLP may be inspected at our registered office. If you do not want us to contact you further about our services then please contact us by either calling 020 3544 0692, email to [marketing.help@knightfrank.com](mailto:marketing.help@knightfrank.com) or post to our UK Residential Marketing Manager at our registered office (above) providing your name and address.