



Exquisite Country Residence

Cheveney, Vicarage Road, Yalding, Kent

The logo for Savills, consisting of a solid yellow square with the word "savills" in lowercase black text to its right.

savills

Exquisite Country Residence

Cheveney, Vicarage Road, Yalding, Kent

OIEO £4,000,000

Cheveney is set in an elevated rural position, surrounded by formal gardens and parkland, on the edge of Yalding village with its village shop, post office, pubs, pre-school, primary school and doctor's surgery.

The property is approached over a long gated driveway and was built in the latter part of the 17th Century, originally of oak framed construction under a plain tiled roof, extended in the 19th Century and restored in the early part of the 20th Century. Over the course of the last twelve months, the current owner has undertaken a comprehensive modernisation project, resulting in Cheveney now providing magnificent family accommodation set in an idyllic rural position, yet in easy access to all road and rail services.

Exquisite Grade II listed country residence of charm

Character features combined with modern embellishments throughout

Superbly appointed accommodation with 5 primary reception rooms & 8 bedrooms with en suites

West Malling 7.8 miles, Tunbridge Wells 11 miles

Delightful formal gardens & grounds with lake totalling about 8.1 acres



About this property

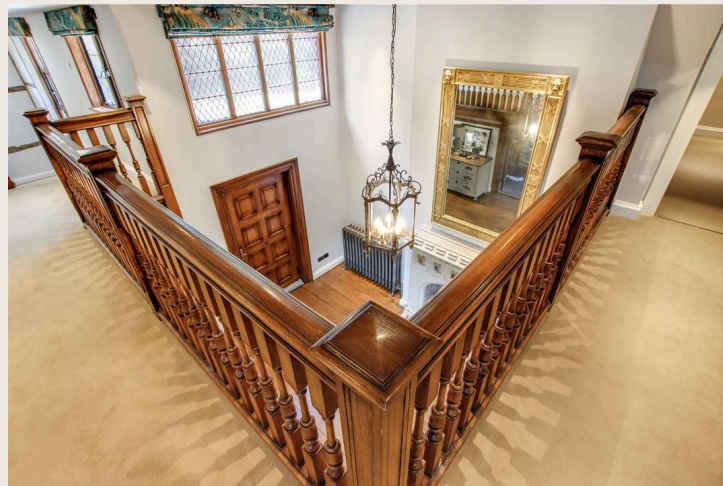
With almost 11,000 sq ft of accommodation, salient points include stylish kitchen and bathroom suites, high ceilings, decorative coving, recessed lighting, dado rails, lead light bay windows, exposed timbers, and extraordinary feature fireplaces. Also of note are the manicured gardens and grounds, together with the impressive lake adorned in established aquatic planting.

There are five primary reception rooms, all of excellent proportions and accessed primarily from the great hall.

The kitchen/breakfast room is fitted with a comprehensive range of wall and base units with an Aga, space for appliances and an island unit incorporating a breakfast bar. The adjoining family room provides access to a utility room.

There is a three bedroomed ground floor apartment ideal for staff or family.

Arranged over the first floor are 8 en suite bedrooms, and an attic room on the second floor.



About this property

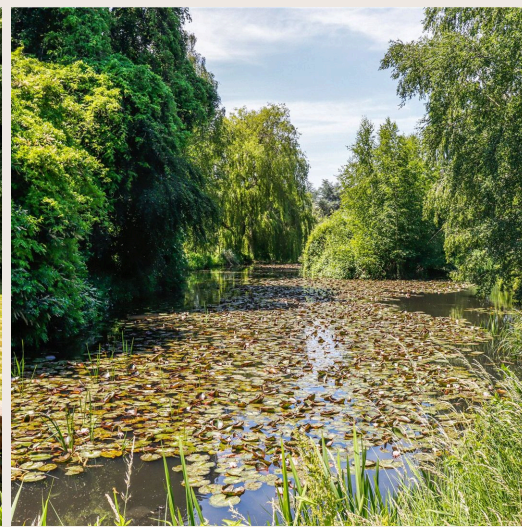
Cheveney is approached over a sweeping, gated driveway culminating at the front of the property and providing ample off road parking.

The gardens are a particular feature of the property being a combination of formal beds and landscaped lawns interspersed with a variety of established evergreen and deciduous trees.



A terrace spans the property providing ample areas for al fresco entertaining, and an idyllic lake is adorned in established aquatic planting.





Location

Shopping: Maidstone (5.9 miles), West Malling (7.8 miles), Tonbridge (9.3 miles). Tunbridge Wells (11 miles).

Mainline Rail Services: Paddock Wood (5.3 miles) to London Bridge/Cannon Street/Charing Cross.

Primary Schools: Yalding, Laddingford and Collier Street.

Grammar Schools: Maidstone - Maidstone Grammar School, Maidstone Grammar School for Girls, Invicta Grammar School, Oakwood Park Grammar School. Tonbridge - Tonbridge Grammar School, Weald of Kent Grammar School, The Judd School. Tunbridge Wells - Tunbridge Wells Grammar School for Boys, Tunbridge Wells Girls' Grammar School, The Skinners' School.

State Schools: Maidstone, Tonbridge and Paddock Wood. www.kent-pages.co.uk/education.

Private Schools: The Preparatory Schools at Somerhill. Hilden Grange in Tonbridge. Sutton Valence. Tonbridge and Sevenoaks. St Helen's Montessori at East Farleigh. Benenden and Dulwich Prep at Cranbrook.

Leisure Facilities: David Lloyd Health Club at Kings Hill. Leisure centres in Tonbridge, Tunbridge Wells and Maidstone. Poult Wood Golf Course in Hadlow, Kings Hill Golf Club and West Malling Golf Club.

Motorway Links: The M20 and M26 at Wrotham Heath gives access to the M25, Gatwick and Heathrow Airports and the Channel Tunnel Terminus.

All distances are approximate.



Floorplans

Approximate Gross Internal Floor Area 10,864 sq ft

Cheveney, Yalding

Gross internal area (approx) 1,009.3 sq m / 10,864 sq ft

Cellars 50.4 sq m / 542 sq ft

Total 1,059.7 sq m / 11,406 sq ft

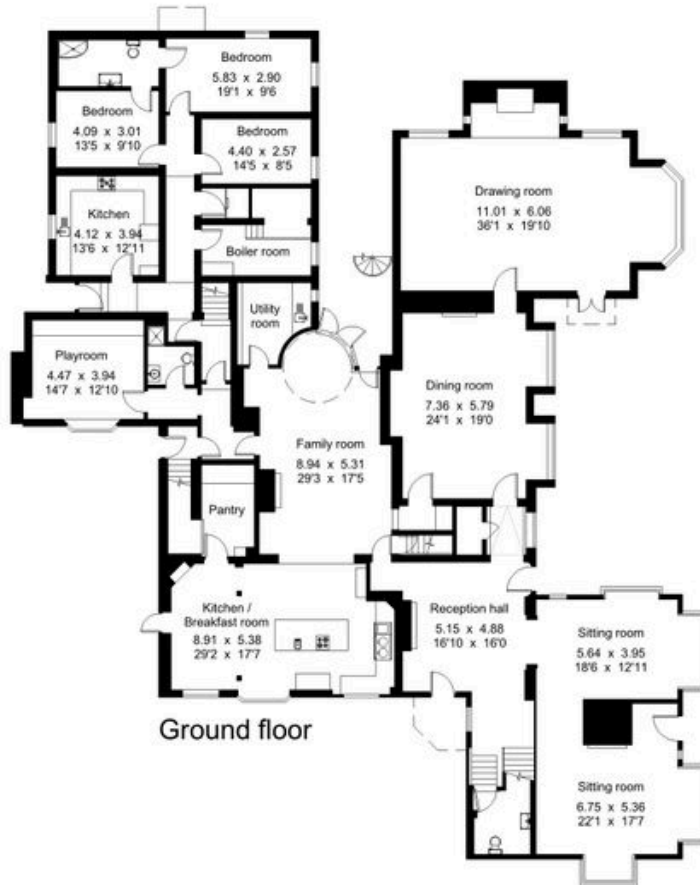
--- reduced headroom below 1.5m / 5'0"



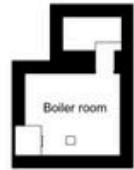
Second floor



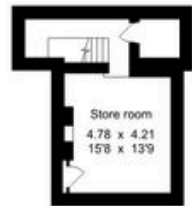
First floor



Ground floor



Cellar



Cellar

For identification only - Not to scale
© Trueplan (UK) Limited

Property Details

Council Tax

Band = H

Tenure

Freehold

Services

Mains water, electricity and gas.

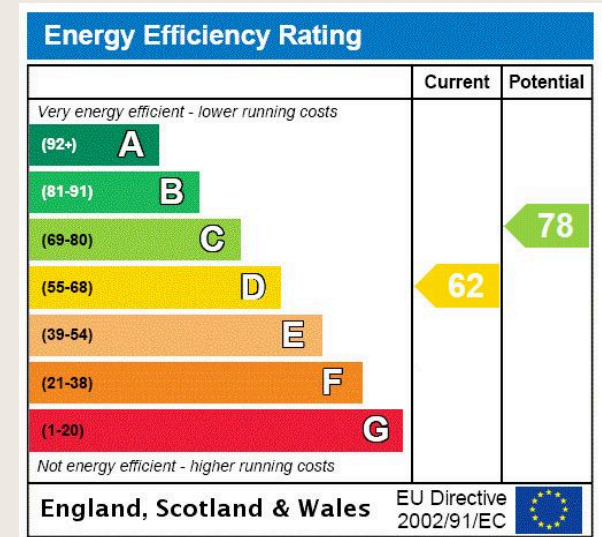
Private drainage incorporating a Biodisc Klargestar installed in 2019.

Further information available upon request.

EPC

EPC Rating = D

CHEVENEY



Exquisite Country Residence

Cheveney, Vicarage Road, Yalding, Kent



OIEO £4,000,000

Enquire



Will Peppitt

Sevenoaks

+44 (0) 7967 555 712

wpeppitt@savills.com

Edward Rook

Knight Frank

+44 (0) 20 7861 5115

edward.rook@knightfrank.com

More Information



[View Digital Brochure](#)



[Property Search](#)

Published: August 2024

Property Ref: SES240082

Viewing strictly by appointment

powered by
FLUX

Important Notice: Savills, its clients and any joint agents give notice that 1: They are not authorised to make or give any representations or warranties in relation to the property either here or elsewhere, either on their own behalf or on behalf of their client or otherwise. They assume no responsibility for any statement that may be made in these particulars. These particulars do not form part of any offer or contract and must not be relied upon as statements or representations of fact. 2: Any areas, measurements or distances are approximate. The text, photographs and plans are for guidance only and are not necessarily comprehensive. It should not be assumed that the property has all necessary planning, building regulation or other consents and Savills have not tested any services, equipment or facilities. Purchasers must satisfy themselves by inspection or otherwise.