

WARNHAM LODGE FARM

WARNHAM • WEST SUSSEX



WARNHAM LODGE FARM

WARNHAM • WEST SUSSEX

Mileages

Warnham Village 1 mile (1.6 km) • Warnham Station 1.7 miles (2.7 km) • Horsham 4 miles (6 km) • Darking 10 miles (16 km)
Gatwick 16 miles (25 km) • Guildford 20 miles (32 km) • London 37 miles (59 km) • London Victoria From 51 minutes.
(Distances are approximate)

Beautifully presented country house
with excellent equestrian facilities.

Accommodation

Reception hall • Cloakroom • Drawing room • Dining room • Family room
Study/Office • Kitchen/breakfast room • Party barn • Laundry room • Boot room and further cloakroom
Principal suite with dressing room • 5 further bedrooms • 4 further bathrooms (3 ensuite)

Gardens and Grounds

Heated outdoor swimming pool • Tennis court • Garages • Terrace and barbecue area Landscaped gardens • Bluebell wood

Equestrian Facilities

Stables with enclosed yard, six boxes • Tack room (heated) • Feed room and wash bay/solarium
2 apartments above with Kitchen • Living room • Bedroom • Bathroom

Further 6 box stables, two arranged as a home gym and another as a dog grooming parlour
Horse walker • All-weather manege • Fenced paddocks • Further pasture

In all about 24 acres
Guide Price: £5 million



savills.co.uk

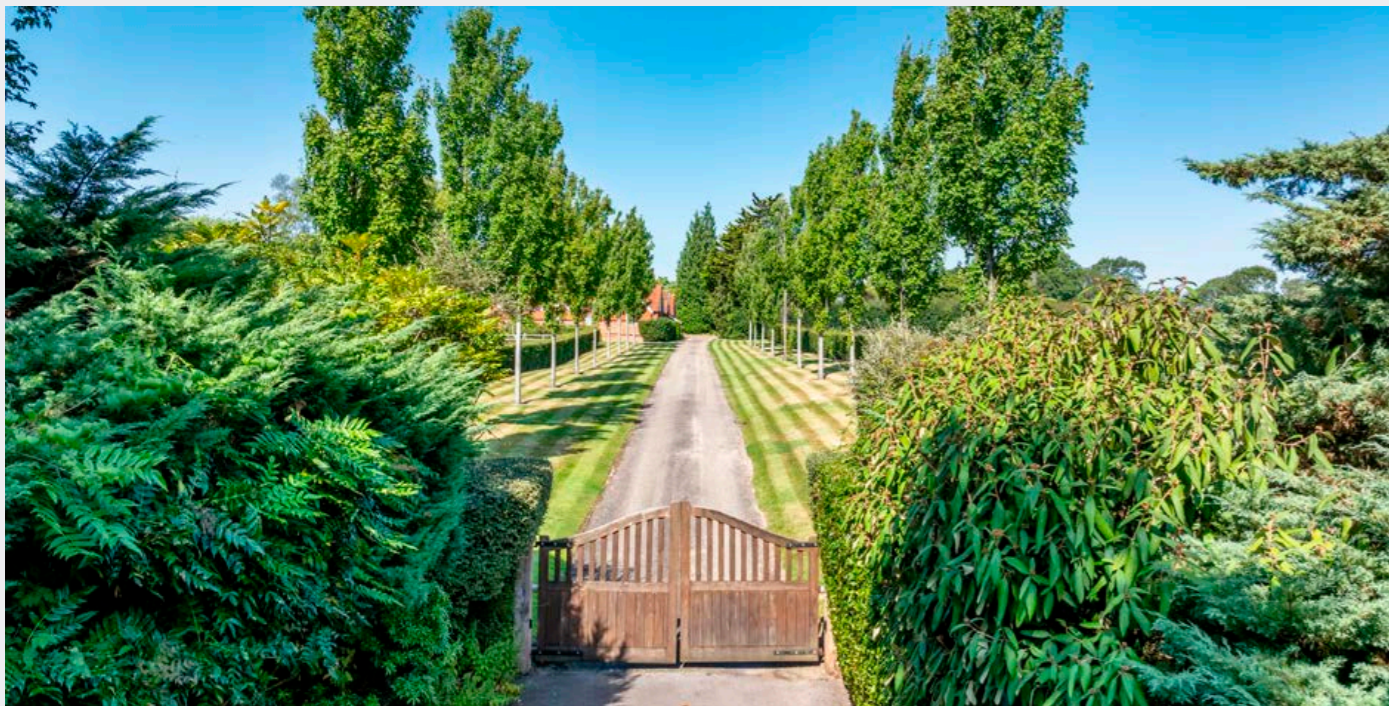
Savills Country Department
Justin Theobald
Tel: 0207 4098 823
justin.theobald@savills.com

Savills Petworth
James Machell
Tel: 01798 345 996
james.machell@savills.com



knightfrank.co.uk

Knight Frank Country Department
Oliver Rodbourne
Tel: 020 7861 1093
oliver.rodbourne@knightfrank.com



Situation

Warnham Lodge Farm enjoys an idyllic rural situation, set far back from a quiet country lane and entirely surrounded by its own landscaped grounds. Its elevated setting also rewards with attractive distant views to Leith Hill.

Warnham is an ancient settlement with origins back to the 13th century and before. It is also the birthplace of the poet Shelley who grew up in the village. In many ways it

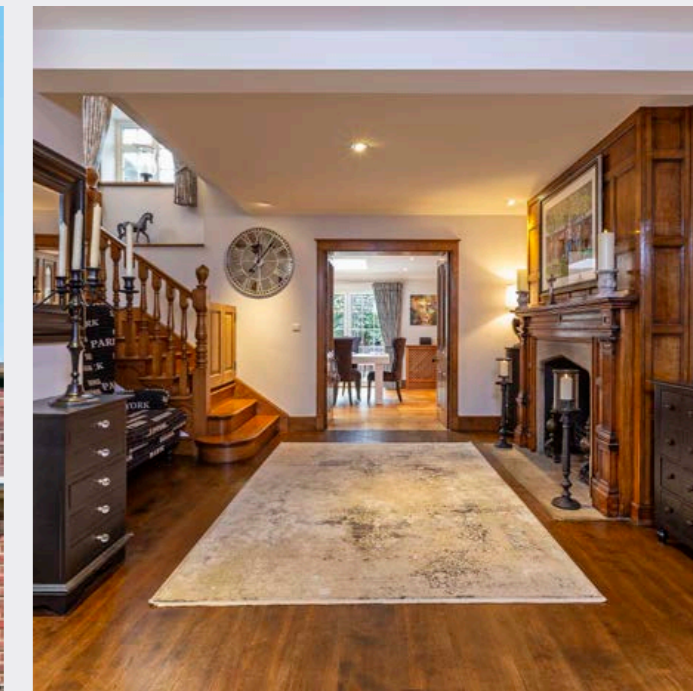
is the archetypal English village with its period buildings, parish church, cricket green, pubs, and today it is a thriving place with a number of active community groups. The village stores and butchers between them provide for daily needs while a more extensive range of services may be found at nearby Horsham or at Dorking.

Communications are good with the main A24 road providing the north-south link between London and the coast and connecting with the M25 at Leatherhead for the airports and the national

motorway network. There is also a good train service from Warnham or Horsham with journey time to London (Victoria) from 51 minutes.

The area benefits from an excellent choice of good schools including Warnham Primary, Farlington, Pennthorpe, Cranleigh and Hurstpierpoint College among several others.

Recreational opportunities include golf at a number of clubs within reach including, Slinfold Golf and Country Club, Mannings Heath and The West Sussex; polo at Hurtwood Park and Knepp Castle; racing at Epsom and Goodwood and sailing at Southwater. Hickstead Jumping Course and Equestrian Centre is located in West Sussex (18.1 miles from Warnham Lodge Farm). Of note there is a 1,000 acre Deer Park and nature reserve in the village of Warnham. There are also public sport and leisure centres in Dorking and Horsham. The surrounding countryside offers miles of walking and riding through some of our prettiest countryside.



Main House

Warnham Lodge Farm is a beautifully presented family house with a perfect balance of entertaining space and family accommodation.

Having been meticulously renovated, the house strikes a harmonious chord between modern aesthetics and traditional charm. The ground floor offers fabulous, predominately south facing lateral space overlooking the gardens and grounds. At the heart of the house is a beautiful family kitchen designed by Martin Moore with both formal and informal dining options. Other highlights include a wonderful drawing room with pitched ceiling that leads to a fully integrated party barn of nearly 50ft complete with stylish bespoke bar.

Upstairs the accommodation consists of six bedrooms and five bathrooms with an excellent principal suite and the added benefit of one of the bedroom suites having its own staircase ideal for guest/independent living.





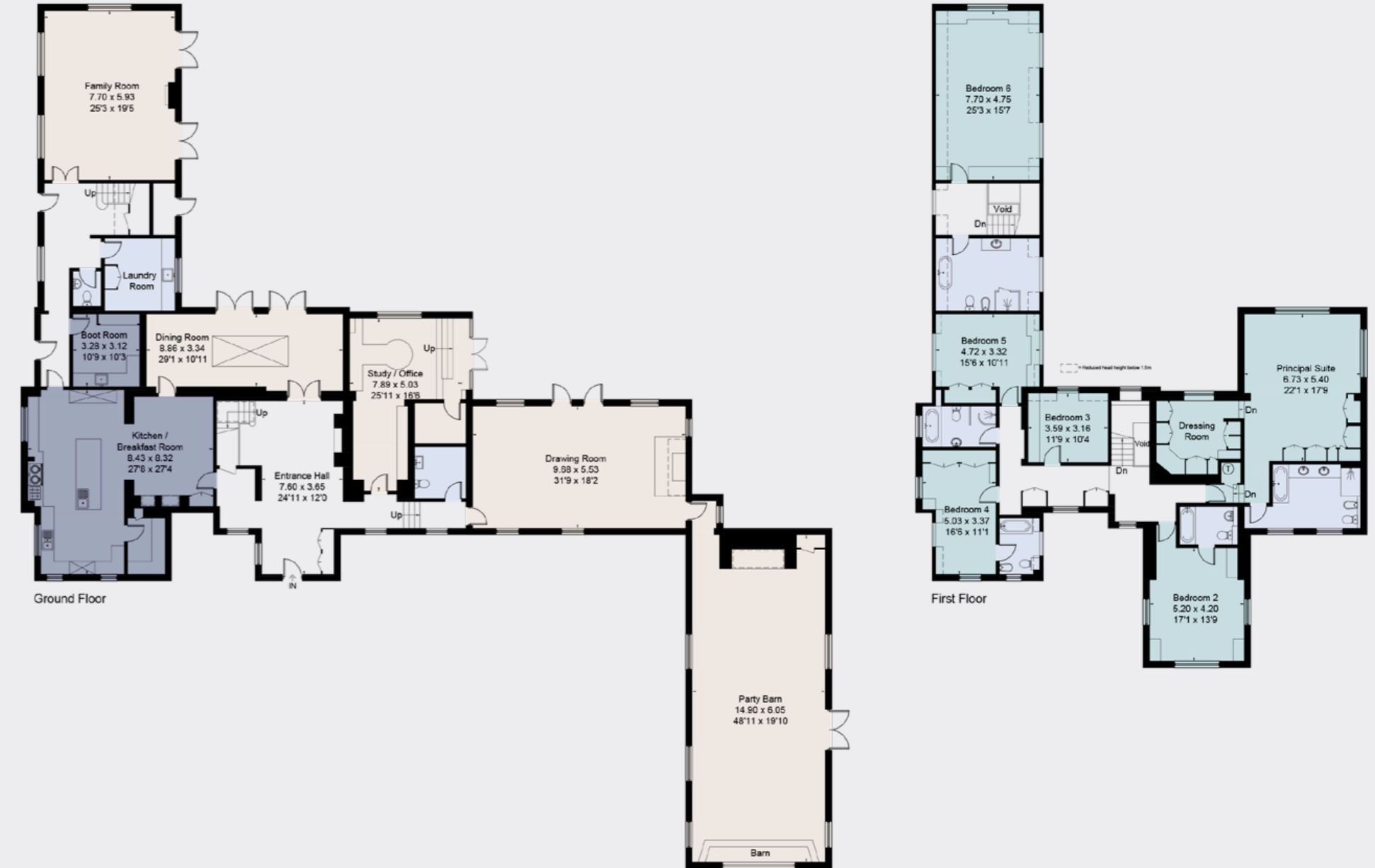




WARNHAM LODGE FARM

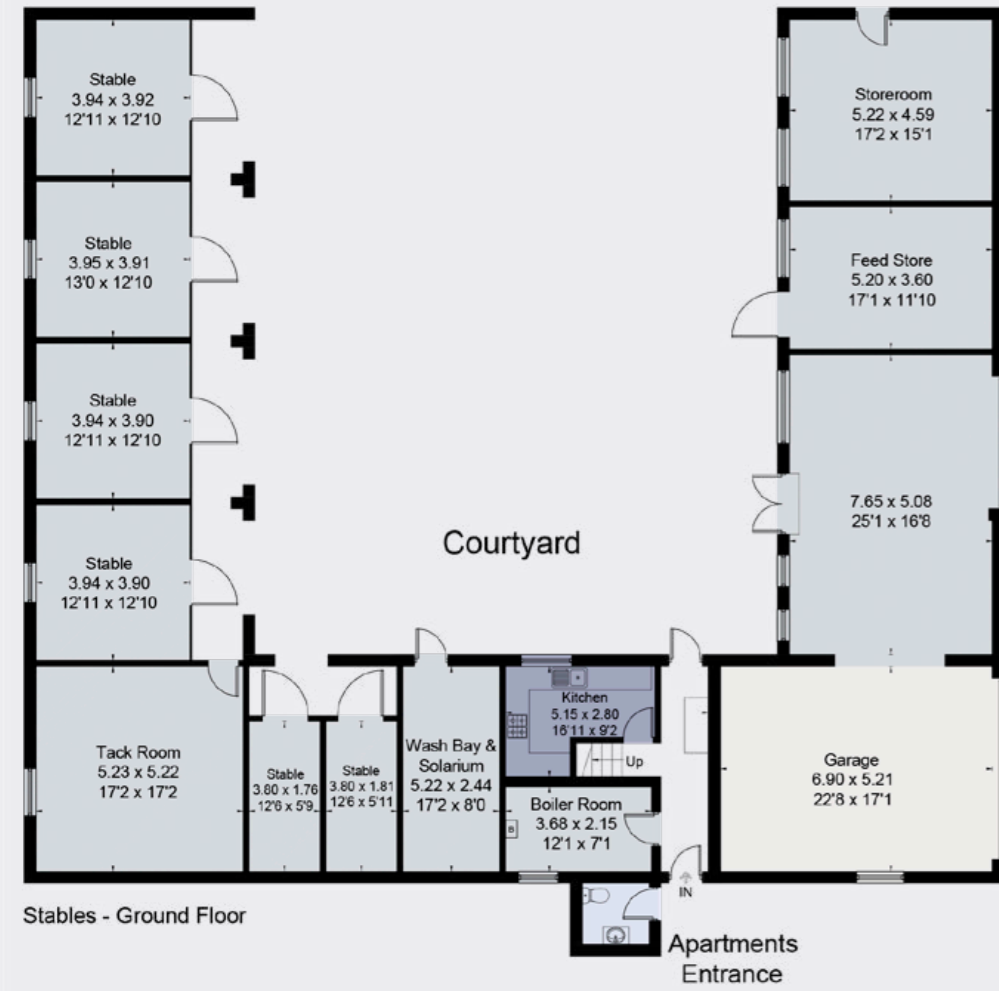
Approximate Gross Internal Area
684.8 sq m / 7371 sq ft (Excluding Void)

Not to scale. For identification purposes only



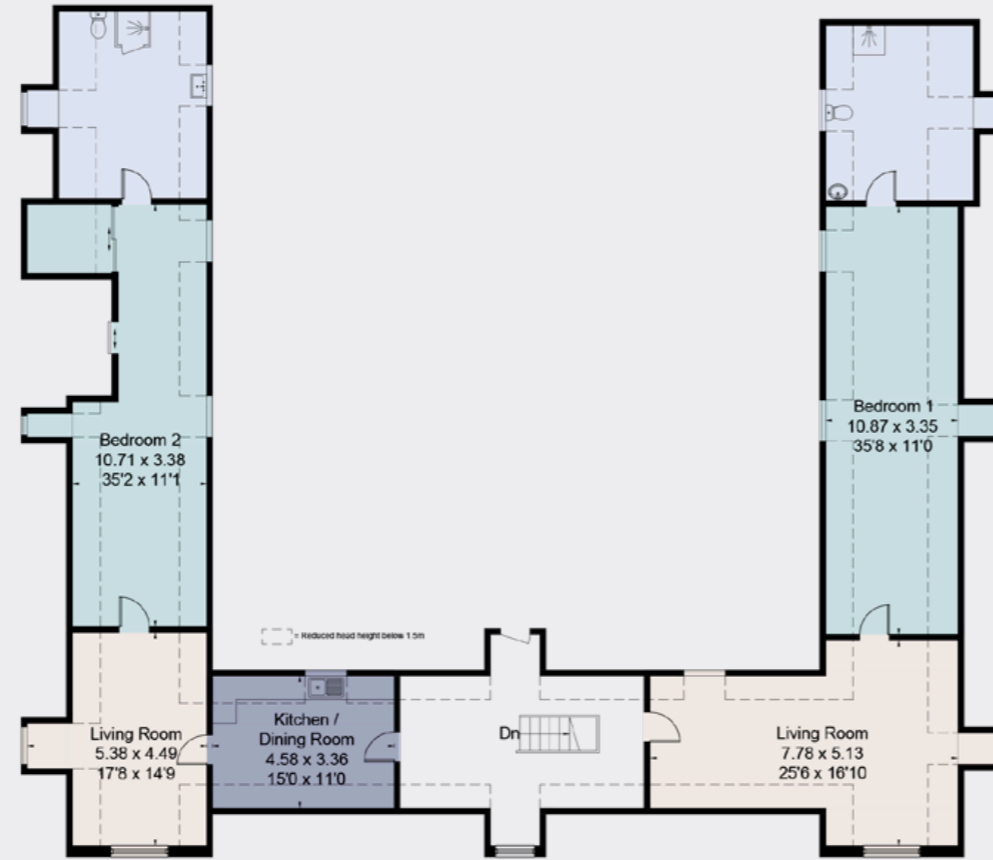
Approximate Gross Internal Area
 Stables Block: 85.2 sq m / 917 sq ft
 Sand School: 241.0 sq m / 2594 sq ft
 Total: 326.2 sq m / 3511 sq ft

Not to scale. For identification purposes only



Stables - Ground Floor

Apartments Entrance



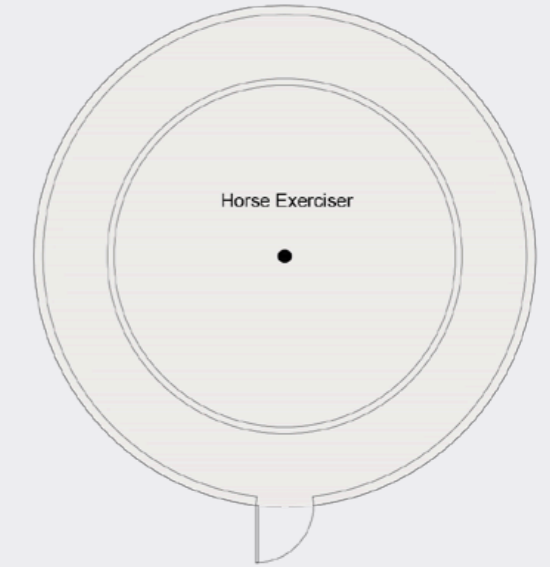
Apartment 1 / 2 - First Floor

Approximate Gross Internal Area
 Stables Outbuildings: 243.2 sq m / 2618 sq ft
 Apartments: 226.6 sq m / 2439 sq ft
 Total: 469.8 sq m / 5057 sq ft

Not to scale. For identification purposes only



Stable Block
 (Not Shown In Actual Location / Orientation)



(Not Shown In Actual Location / Orientation)



(Not Shown In Actual Location / Orientation)

(Not Drawn To Scale)



Outbuildings

The principal outbuilding is an immaculate stable block and enclosed yard. These include four Monarch loose boxes, two smaller boxes, tack room, feed room and wash bay/solarium. The first floor has been refurbished and is arranged as two apartments that would be ideally suited to secondary accommodation.

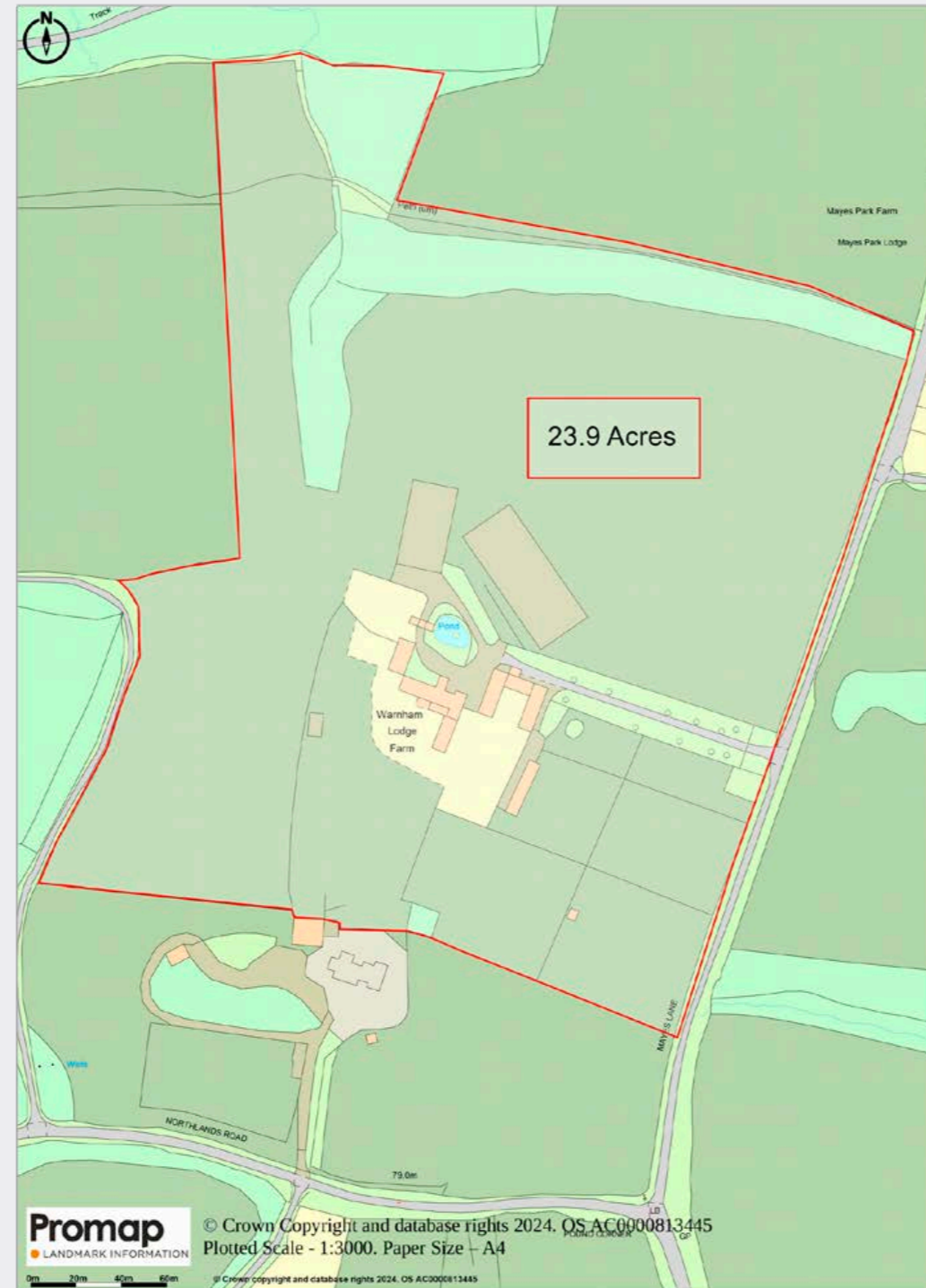
There is an additional modern timber stable block of six boxes, offering flexible use.

Further equestrian facilities include a Clayton horse-walker and a 60x25 metre all weather training arena by Charles Britton recently refurbished by Jim Boyce. Also incorporated into the main stable block is a double and single garage, and an additional storage room.

Gardens and Grounds

The gardens and grounds are a particular highlight. Approached from the lane through an attractive tree-lined 100 metre drive that leads to the house, views over the north Surrey hills and open aspects create a wonderful feeling of seclusion and space. Lying mainly to the south and west of the house the formal garden is ideally suited for entertaining with the Swimming pool and tennis court close by. A clubhouse with bar and decking has recently been added to the pool area and the pool totally refurbished by Lagoon Pools.

Beyond the formal area the remainder of the garden extends to the southern boundary and is laid mainly to lawn with spring flowers and a variety of mature trees and shrubs. The remaining grounds to the north and east are arranged as post and rail fenced paddocks or open pasture. Also, to the north, there is a pretty area of light woodland with a bluebell wood. A short length of little-used public footpath crosses the land, well away and out of sight of the house.



Property Information

Services

Mains water and electricity Oil-fired central heating Electric AGA

Private Klargester drainage High speed broadband Security system

Tenure

Freehold

Local Authority

Horsham District Council

Council Tax

Main House: Band H

Stables Flat: Band A

Postcode

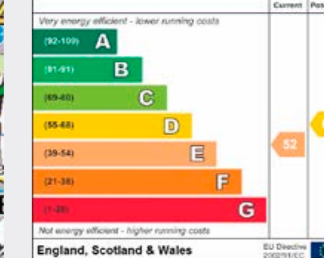
RH12 3SG

Viewing

Strictly by appointment with Savills and Knight Frank.

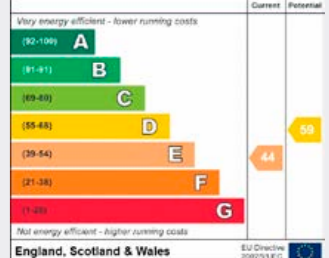
Main House

Energy Efficiency Rating



Stable Flat

Energy Efficiency Rating



IMPORTANT NOTICE Savills, their clients and any joint agents give notice that: 1.They are not authorised to make or give any representations or warranties in relation to the property either here or elsewhere, either on their own behalf or on behalf of their client or otherwise. They assume no responsibility for any statement that may be made in these particulars. These particulars do not form part of any offer or contract and must not be relied upon as statements or representations of fact. 2.Any areas, measurements or distances are approximate. The text, photographs and plans are for guidance only and are not necessarily comprehensive. It should not be assumed that the property has all necessary planning, building regulation or other consents and Savills have not tested any services, equipment or facilities. Purchasers must satisfy themselves by inspection or otherwise. 24/08/30/JT. Capture Property 01225 667287.

