



Tenterleas, Fowey, Cornwall





Tenterleas, 20 St. Fimbarrus Road, Fowey, Cornwall, PL23 1JJ



Last sold in 2001, one of very few large detached houses above the harbour, set in a generous plot with staggering southerly views out to sea.

Summary of accommodation

Wonderful split-level kitchen-dining room | 25'2 x 16'8 sitting room
5 bedrooms (3 en suite) | 4 bathrooms | Study/Office
Covered first floor balcony
Large garden with summer house & potting shed
Private driveway & integral double garage | 2,844 sq ft | EPC - D

Distances

Readymoney Cove 0.4 miles, Royal Fowey Yacht Club 150 yards, Fowey Gallants Sailing Club 0.5 mile, Truro 22 miles, Newquay Airport 24 miles

Services

Mains water, electricity. Gas and drainage. Gas-fired underfloor and radiator heating. There is fibre broadband providing 50 Mbps. Gas AGA.

Location

Tenterleas is one of just a handful of large detached houses positioned near the end of St. Fimbarrus Road, set above The Esplanade and with world-class views not only over the harbour across to Polruan but out to the open sea. This is a great location, offering sublime harbour and sea views and within a short walk of both Readymoney Cove and the harbourside, yet having the luxury of a large plot with gardens, garaging and parking. Protected by a narrow harbour entrance between two castles, Fowey on the south coast of Cornwall remains largely as it has been for years, with narrow streets winding through the town near the water's edge. The Royal Fowey Yacht Club and Fowey Gallants Sailing Club largely bookend the town with plenty of interesting shops, galleries, deli-cafes and restaurants. Despite this idyllic waterside setting, Fowey is only 3 miles from the main London-Penzance main railway line, with an overnight 'sleeper' service from either Par or Lostwithiel.

Knight Frank
London

Hamish Humfrey
Hamish.Humfrey@knightfrank.com





20 St. Fimbarrus Road, Fowey, PL23 1JJ

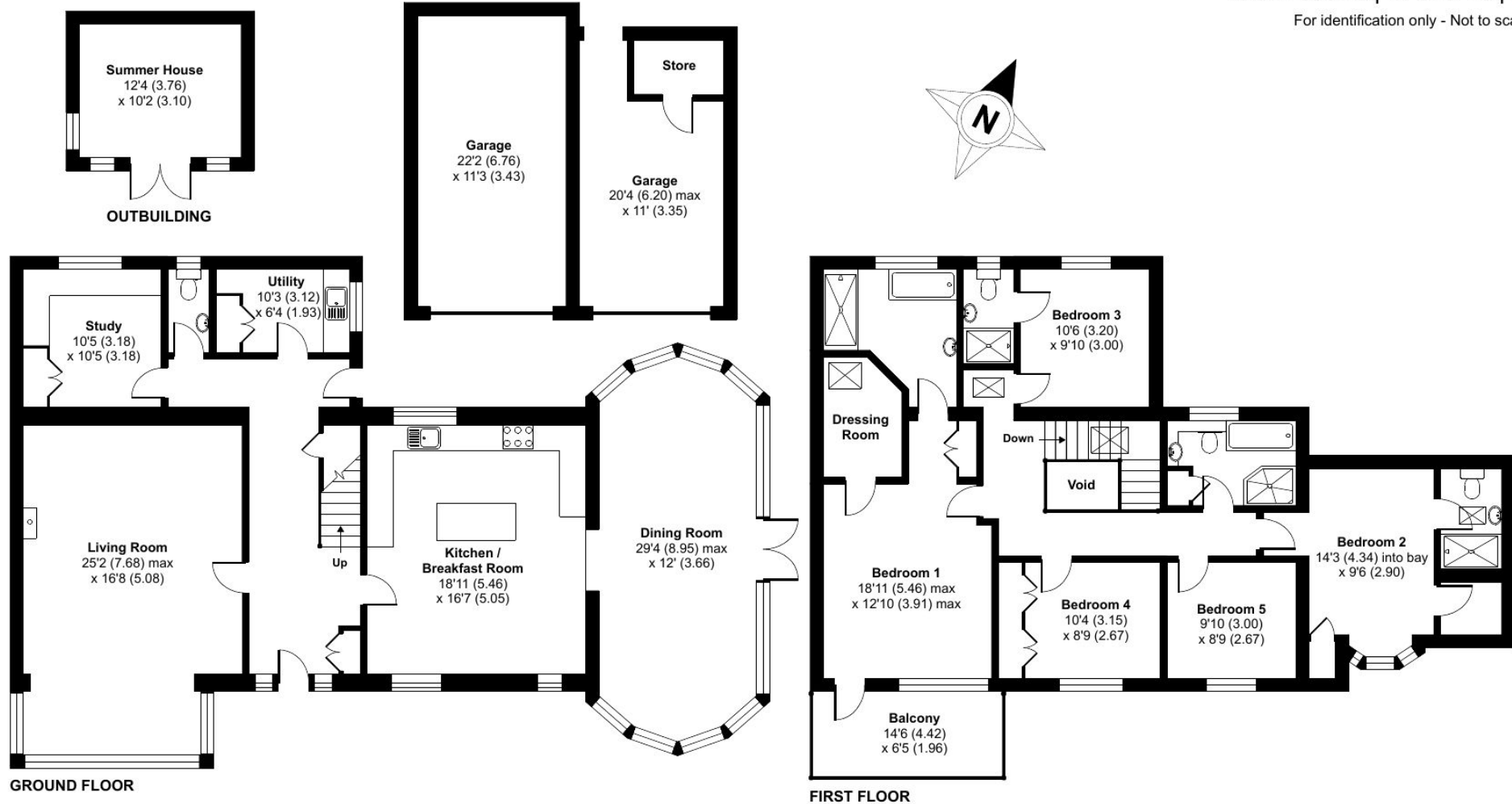
Approximate Area = 2719 sq ft / 252.5 sq m (excludes void)

Garage = 495 sq ft / 45.9 sq m

Outbuilding = 125 sq ft / 11.6 sq m

Total = 3339 sq ft / 310.1 sq m

For identification only - Not to scale



Floor plan produced in accordance with RICS Property Measurement Standards incorporating International Property Measurement Standards (IPMS2 Residential). © nichecom 2022. Produced for nichecom. REF: 900649



