



LYFORD ROAD

London SW18



LYFORD ROAD LONDON SW18

Exceptional Semi-detached family house with over 3600sqft of living space and a 70ft South West facing garden.



6



4



3

EPC

C

Local Authority: London Borough of Wandsworth

Council Tax band: H

Tenure: Freehold

Guide price: £3,650,000



LYFORD ROAD LONDON SW18

This outstanding 6-bedroom family home, spanning over 3,600 sq. ft, offers an exceptional blend of elegance, space, and practicality. Situated just moments from Wandsworth Common, the property boasts a beautifully landscaped 70-ft south-west facing garden and excellent transport links via Wandsworth Common Station (Victoria/Waterloo via Clapham Junction) and bus routes along Trinity Road.

A grand, wide entrance hall with stunning wooden parquet flooring welcomes you into the home, featuring a superb galleried staircase. The elegant bay-fronted double reception room at the front showcases solid Dinesen Douglas Fir floorboards, bespoke oak bookshelves, and an attractive fireplace, creating a warm and inviting space. The rear reception seamlessly flows into an expansive kitchen/breakfast/family room, where full-length French windows open onto a large paved terrace, leading to the private, landscaped garden.







LYFORD ROAD LONDON SW18

The bespoke teak kitchen is thoughtfully designed, offering extensive cabinetry, floor-to-ceiling cupboards, and a generous central island. It is equipped with a classic two-oven Aga, a multi-function oven, and an electric hob, making it a dream for home chefs.

The versatile basement level is perfect for a variety of needs. A spacious front bedroom, currently used as a study, includes a storage room with plumbing already in place for conversion into an en suite shower room. To the rear, a large family/media room with oak flooring and moveable double-sided cupboards allows for flexible space configuration. A contemporary shower room, a second kitchen/utility room, and a linen store make this floor ideal for teenage children, a live-in nanny, or an au pair.



LYFORD ROAD LONDON SW18

The first floor hosts a generous principal bedroom with fitted wardrobes and a well-appointed en suite bathroom. A lovely guest double bedroom overlooks the garden, while a stylish family bathroom and additional cloakroom complete this level.

The top floor provides three additional well-proportioned bedrooms, a children's bathroom, and useful loft storage, making this home perfect for a growing family.

Offering a perfect balance of period charm and modern living, this superb home is an exceptional opportunity in one of Wandsworth's most sought-after locations.

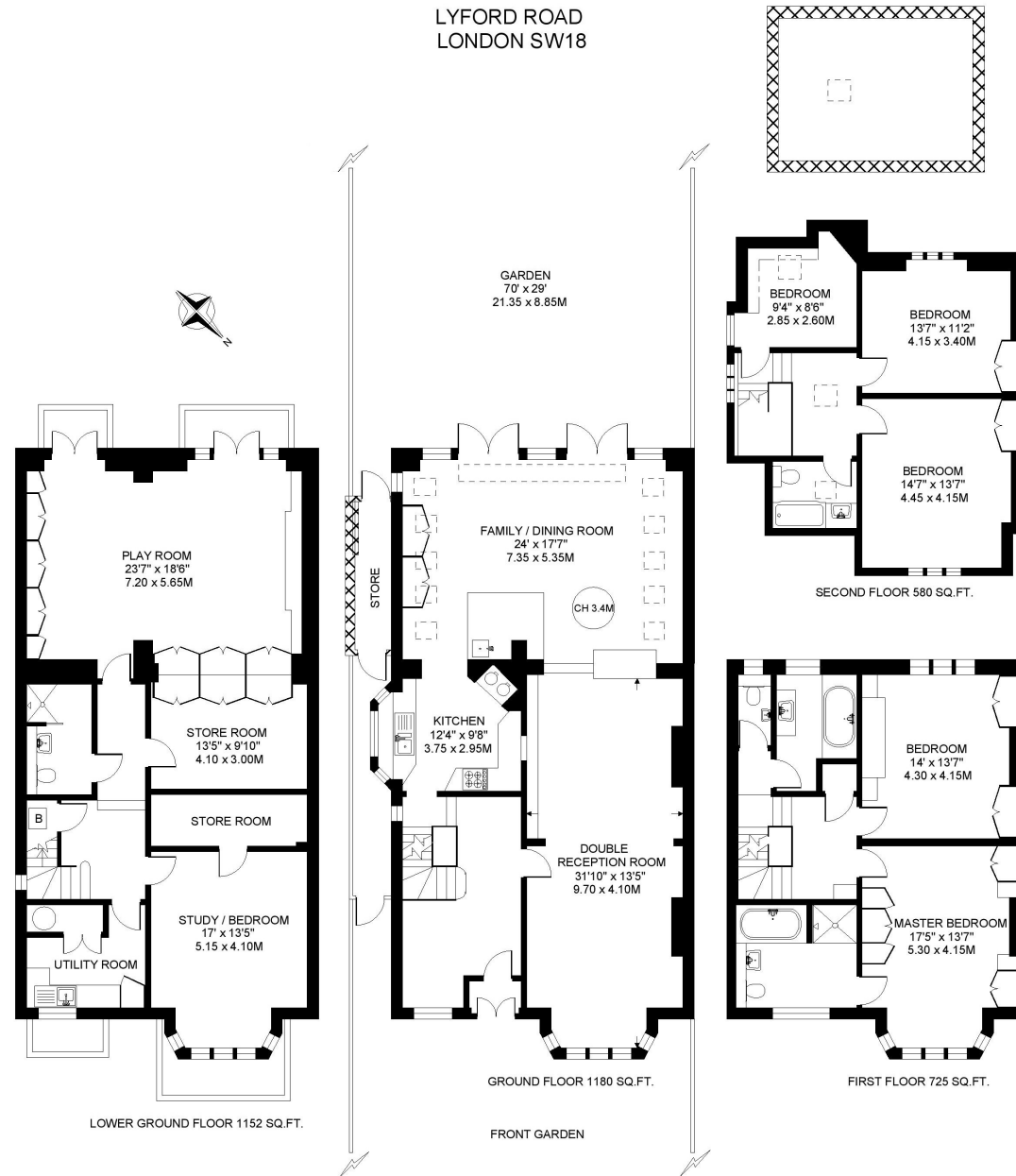
Lyford Road is one of the most sought-after roads in the area, located on the doorstep of Wandsworth Common and close to the shops and restaurants of Bellevue Road. There are good transport links by bus on Trinity Road and trains from Wandsworth Common Station into the City and the Westend. The area is exceptionally well served by private and state schools and falls within the Beatrix Potter catchment area. There are also excellent local sporting amenities for children, including Battersea Ironsides junior rugby, Spencer cricket, and Magdalen Park tennis clubs.







LYFORD ROAD
LONDON SW18



Approximate Internal Floor Area = 3,637 sq ft / 337.9 sq m
Plus Garden Storage 40 sq ft / 3.7 sq m - Plus Loft Storage 208 sq ft / 19.3 sq m
Total Area Shown on Plan 3,885 sq ft / 360.9 sq m

This plan is for layout guidance only. Not drawn to scale unless stated. Windows and door openings are approximate. Whilst every care is taken in the preparation of this plan, please check all dimensions, shapes and compass bearings before making any decisions reliant upon them. (ID767266)

We would be delighted
to tell you more.

Jack Gravestock

+44 20 3667 6751

jack.gravestock@knightfrank.com

Knight Frank Wandsworth

26 Bellevue Road

London SW 17 7EB

knightfrank.co.uk

Your partners in property

1. Particulars: These particulars are not an offer or contract, nor part of one. You should not rely on statements given by Knight Frank in the particulars, by word of mouth or in writing ("information") as being factually accurate about the property, its condition or its value. Neither Knight Frank nor any joint agent has any authority to make any representations about the property, and accordingly any information given is entirely without responsibility on the part of Knight Frank. 2. Material Information: Please note that the material information is provided to Knight Frank by third parties and is provided here as a guide only. While Knight Frank has taken steps to verify this information, we advise you to confirm the details of any such material information prior to any offer being submitted. If we are informed of changes to this information by the seller or another third party, we will use reasonable endeavours to update this as soon as practical. 3. Photos, Videos etc: The photographs, property videos and virtual viewings etc. show only certain parts of the property as they appeared at the time they were taken. Areas, measurements and distances given are approximate only. 4. Regulations etc: Any reference to alterations to, or use of, any part of the property does not mean that any necessary planning, building regulations or other consent has been obtained. A buyer must find out by inspection or in other ways that these matters have been properly dealt with and that all information is correct. 5. Fixtures and fittings: A list of the fitted carpets, curtains, light fittings and other items fixed to the property which are included in the sale (or may be available by separate negotiation) will be provided by the Seller's Solicitors. 6. VAT: The VAT position relating to the property may change without notice. 7. To find out how we process Personal Data, please refer to our Group Privacy Statement and other notices at <https://www.knightfrank.com/legals/privacy-statement>.

Particulars dated April 2025. Photographs and videos dated April 2025. All information is correct at the time of going to print. Knight Frank is the trading name of Knight Frank LLP. Knight Frank LLP is a limited liability partnership registered in England and Wales with registered number OC305934. Our registered office is at 55 Baker Street, London W1U 8AN. We use the term 'partner' to refer to a member of Knight Frank LLP, or an employee or consultant. A list of members names of Knight Frank LLP may be inspected at our registered office. If you do not want us to contact you further about our services then please contact us by either calling 020 3544 0692, email to marketing.help@knightfrank.com or post to our UK Residential Marketing Manager at our registered office (above) providing your name and address.