



SWAFFIELD ROAD

Wandsworth SW18



SWAFFIELD ROAD WANDSWORTH SW18

Situated in the heart of Wandsworth, hiding behind a Victorian house, this beautifully transformed 1840s terraced home offers over 3,300 sq ft of thoughtfully designed living space over two floors.



3



2



3

EPC

D

Local Authority: London Borough of Wandsworth

Council Tax band: F

Tenure: Freehold

Asking Price: £2,250,000



SWAFFIELD ROAD WANDSWORTH SW18

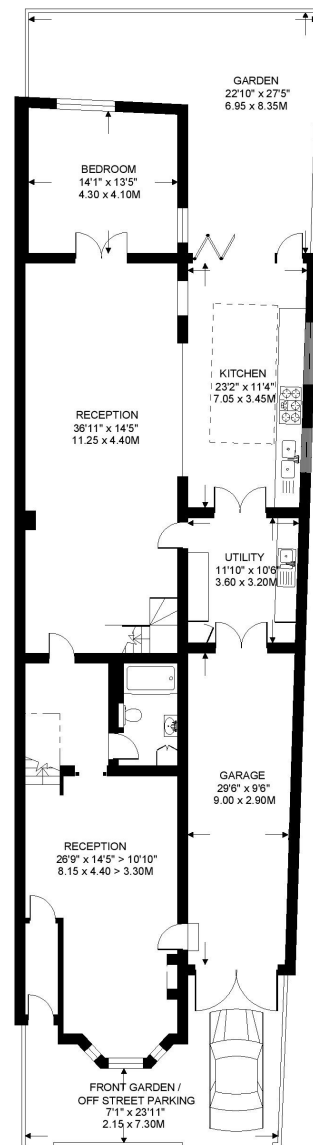
The home includes three private outdoor spaces, off-street parking, a garage, and potential for further development, with lapsed planning permission for a loft extension. Located on a quiet street near Earlsfield station, it offers swift London Waterloo access, excellent amenities, green spaces, and top-rated schools. A bright entrance hall leads to a bay-windowed living space, a family bathroom, and a vast open-plan kitchen/living area with Chalon cabinetry, an exposed stock-brick wall, and bifold doors to the rear garden. A utility room connects to the garage. Upstairs, a loft-style living area with skylights, exposed brick, and a Nordpeis log burner opens onto a roof garden. The home has three bedrooms, including a 570 sq ft principal suite with fireplaces, air conditioning, and a high-end en-suite with a dressing room. Outdoor spaces include a front courtyard with parking, a landscaped walled garden, and a decked roof terrace.



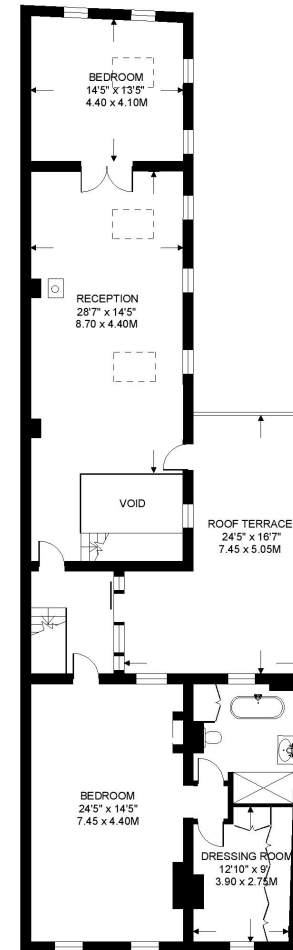




SWAFFIELD ROAD
WANDSWORTH
LONDON SW18



GROUND FLOOR 2001 SQ.FT.



FIRST FLOOR 1386 SQ.FT.

Swaffield Road, Wandsworth, SW18
Approximate Internal Floor Area = 3,387 sq ft / 314.7 sq m

This plan is for layout guidance only. Not drawn to scale unless stated. Windows and door openings are approximate. Whilst every care is taken in the preparation of this plan, please check all dimensions, shapes and compass bearings before making any decisions reliant upon them. (ID767266)



We would be delighted
to tell you more.

Jack Gravestock
+44 20 3667 6751
jack.gravestock@knightfrank.com

Knight Frank Wandsworth
26 Bellevue Road,
London SW17 7EB

knightfrank.co.uk

Your partners in property

1. Particulars: These particulars are not an offer or contract, nor part of one. You should not rely on statements given by Knight Frank in the particulars, by word of mouth or in writing ("information") as being factually accurate about the property, its condition or its value. Neither Knight Frank nor any joint agent has any authority to make any representations about the property, and accordingly any information given is entirely without responsibility on the part of Knight Frank. 2. Material Information: Please note that the material information is provided to Knight Frank by third parties and is provided here as a guide only. While Knight Frank has taken steps to verify this information, we advise you to confirm the details of any such material information prior to any offer being submitted. If we are informed of changes to this information by the seller or another third party, we will use reasonable endeavours to update this as soon as practical. 3. Photos, Videos etc: The photographs, property videos and virtual viewings etc. show only certain parts of the property as they appeared at the time they were taken. Areas, measurements and distances given are approximate only. 4. Regulations etc: Any reference to alterations to, or use of, any part of the property does not mean that any necessary planning, building regulations or other consent has been obtained. A buyer must find out by inspection or in other ways that these matters have been properly dealt with and that all information is correct. 5. Fixtures and fittings: A list of the fitted carpets, curtains, light fittings and other items fixed to the property which are included in the sale (or may be available by separate negotiation) will be provided by the Seller's Solicitors. 6. VAT: The VAT position relating to the property may change without notice. 7. To find out how we process Personal Data, please refer to our Group Privacy Statement and other notices at <https://www.knightfrank.com/legals/privacy-statement>.

Particulars dated April 2025. Photographs and videos dated April 2025. All information is correct at the time of going to print. Knight Frank is the trading name of Knight Frank LLP. Knight Frank LLP is a limited liability partnership registered in England and Wales with registered number OC305934. Our registered office is at 55 Baker Street, London W1U 8AN. We use the term 'partner' to refer to a member of Knight Frank LLP or an employee or consultant. A list of members names of Knight Frank LLP may be inspected at our registered office. If you do not want us to contact you further about our services then please contact us by either calling 020 3544 0692, email to marketing.help@knightfrank.com or post to our UK Residential Marketing Manager at our registered office (above) providing your name and address.