



RIDGWAY PLACE

Wimbledon, SW19



RIDGWAY PLACE

A spectacular detached Victorian house in the heart of
Wimbledon Village.



Local Authority: London Borough of Merton

Council Tax band: H

Tenure: Freehold

Guide Price: £5,500,000

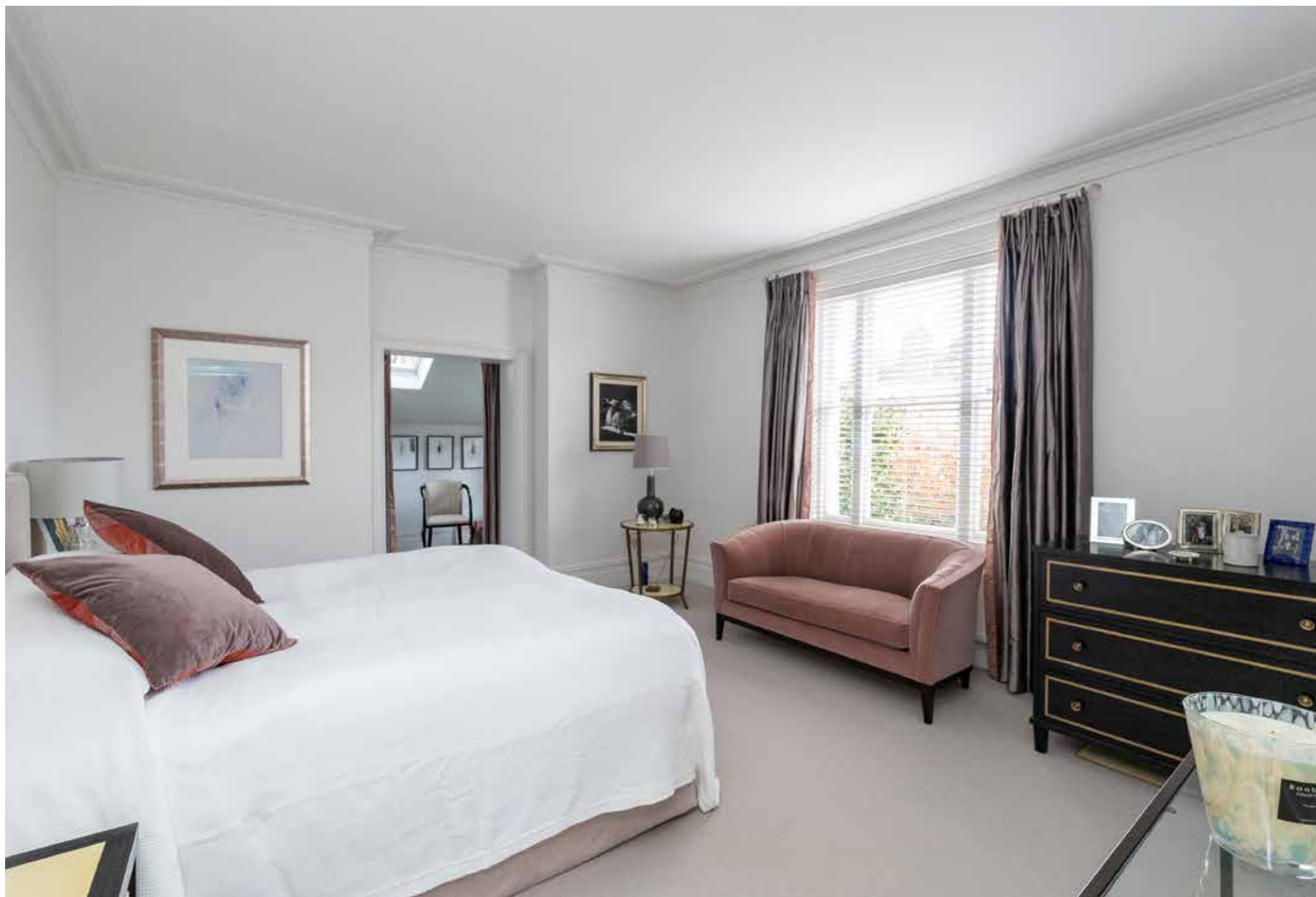


ABOUT THE PROPERTY

This rare and elegant detached five / six bedroom mid-Victorian family house is enviably situated on a beautiful plot at the elevated Village end of Ridgway Place, one of the most sought-after roads in Wimbledon Village. Lovingly restored and modernised to an impeccable standard by the current owners, this exceptional property retains much of its period charm typical. The inviting raised ground floor entrance hall leads to a generous front reception and a fantastic rear aspect kitchen entertaining area with idyllic views on to the secluded rear garden. French doors provide access to the garden, seamlessly connecting the indoors with the lush outdoor area. The versatile lower ground floor provides direct access to a spacious terrace and the garden, while inside, the house is thoughtfully arranged as a formal dining room, family room and a guest bedroom suite with a shower room with underfloor heating.











Spread across the upper floors are five well proportioned, bright and airy bedrooms and four bathrooms, including an impressive full width rear aspect principal suite with a dressing room and an contemporary en-suite bathroom and offers serene rear garden views. There are two further suites, one on the first floor and one on the second, and there is a family bathroom with a separate bath and shower enclosure on the second floor.

The second floor also benefits from air-conditioning. Externally, there is off-street parking to the front, while the rear garden is beautifully landscaped and laid mainly to lawn, bordered and well screened by a variety of shrubs, trees and perennials, making it the ideal place for entertaining and relaxing. A charming terrace provides an ideal spot for al-fresco dining.







Approximate Gross Internal Area = 323.5 sq m / 3482 sq ft

Christopher Burton FNAEA

+44 20 3815 9417

chris.burton@knightfrank.com

Knight Frank Wimbledon

58 High Street, London

SW19 5EE

knightfrank.co.uk

Your partners in property

1. Particulars: These particulars are not an offer or contract, nor part of one. You should not rely on statements given by Knight Frank in the particulars, by word of mouth or in writing ("information") as being factually accurate about the property, its condition or its value. Neither Knight Frank nor any joint agent has any authority to make any representations about the property, and accordingly any information given is entirely without responsibility on the part of Knight Frank. 2. Material Information: Please note that the material information is provided to Knight Frank by third parties and is provided here as a guide only. While Knight Frank has taken steps to verify this information, we advise you to confirm the details of any such material information prior to any offer being submitted. If we are informed of changes to this information by the seller or another third party, we will use reasonable endeavours to update this as soon as practical. 3. Photos, Videos etc: The photographs, property videos and virtual viewings etc. show only certain parts of the property as they appeared at the time they were taken. Areas, measurements and distances given are approximate only. 4. Regulations etc: Any reference to alterations to, or use of, any part of the property does not mean that any necessary planning, building regulations or other consent has been obtained. A buyer must find out by inspection or in other ways that these matters have been properly dealt with and that all information is correct. 5. Fixtures and fittings: A list of the fitted carpets, curtains, light fittings and other items fixed to the property which are included in the sale (or may be available by separate negotiation) will be provided by the Seller's Solicitors. 6. VAT: The VAT position relating to the property may change without notice. 7. To find out how we process Personal Data, please refer to our Group Privacy Statement and other notices at <https://www.knightfrank.com/legals/privacy-statement>.

Particulars dated October 2024. Photographs and videos dated October 2024. All information is correct at the time of going to print. Knight Frank is the trading name of Knight Frank LLP. Knight Frank LLP is a limited liability partnership registered in England and Wales with registered number OC305934. Our registered office is at 55 Baker Street, London W1U 8AN. We use the term 'partner' to refer to a member of Knight Frank LLP, or an employee or consultant. A list of members names of Knight Frank LLP may be inspected at our registered office. If you do not want us to contact you further about our services then please contact us by either calling 020 3544 0692, email to marketing.help@knightfrank.com or post to our UK Residential Marketing Manager at our registered office (above) providing your name and address.

