



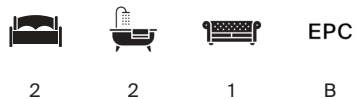
HOUNSFIELD LODGE

Wimbledon, SW20



PERFECT BLEND OF MODERN LUXURY AND PRACTICAL LIVING

A beautiful two-bedroom, two-bathroom first floor apartment, located in the award winning Chambers Park Hill development.



Local Authority: London Borough of Merton

Council Tax band: F

Tenure: Leasehold, approximately 988 years remaining.

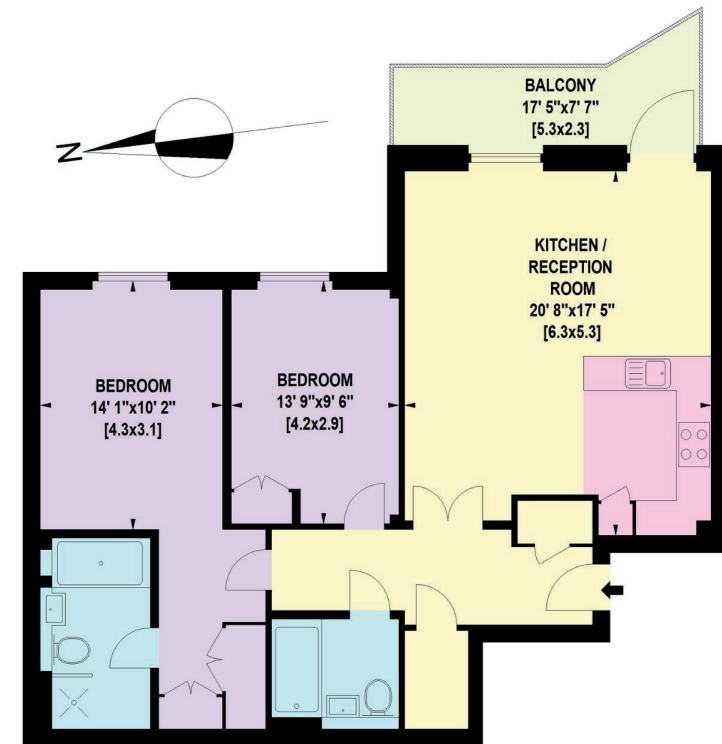
Ground rent: £912.25 per annum, reviewed every 10 years. Next review date not known, please make your own enquiries.

Service charge: £8,200 per annum, reviewed every 10 years. Next review date not known, please make your own enquiries.

Guide Price: £950,000

This exceptional two-bedroom, two-bathroom first floor apartment, located in the award winning Chambers Park Hill development and built by the Berkeley Group, offers a perfect blend of modern luxury and practical living. The expansive open-plan kitchen and reception room is fitted with sleek units and state-of-the-art appliances. Flooded with natural light, this space opens onto its balcony overlooking the courtyard gardens, ideal for outdoor relaxation. The principal bedroom suite includes a modern bathroom. On-site amenities include a 12-hour concierge service, available seven days a week, along with a communal meeting room, gym, cinema, library, and Wi-Fi lounge for residents to enjoy. The apartment also benefits from no onward chain, air conditioning throughout, an allocated parking space in the secure underground car park with EV charging and visitor parking.

Offici non coris voluptidipit ea di officid explit odia et dolorent idest, net apit et explicid utae volectur sinus magnis sequia con etus animperum rerchil ex exerum, utemporibus aperum ad mosae et etur, est, te vent quodis int minctem lit aut acersess itemqui quidus sitam fugit pero conecerro ma dolenhil iligent enientus eliquas aut dolupta spersperum accatus sus et et que cum est, tem facerro videmped eosam exped molupta volendandam alis intiae late dolut ad qui blabor aut et ea esto volupta tatus doloritia disquun daeepe rorion pelendit qui inciat.



FIRST FLOOR

Approximate Gross Internal Area = 89 sq m / 958 sq ft

This plan is for layout guidance only. Not drawn to scale unless stated. Windows and door openings are approximate. Whilst every care is taken in the preparation of this plan, please check all dimensions, shapes and compass bearings before making any decisions reliant upon them. (ID767266)



We would be delighted
to tell you more.

Ross Jordan
+44 20 3830 8634
ross.jordan@knightfrank.com

Knight Frank Wimbledon
58 High Street, London
SW19 5EE

knightfrank.co.uk

Your partners in property

1. Particulars: These particulars are not an offer or contract, nor part of one. You should not rely on statements given by Knight Frank in the particulars, by word of mouth or in writing ("information") as being factually accurate about the property, its condition or its value. Neither Knight Frank nor any joint agent has any authority to make any representations about the property, and accordingly any information given is entirely without responsibility on the part of Knight Frank. 2. Material Information: Please note that the material information is provided to Knight Frank by third parties and is provided here as a guide only. While Knight Frank has taken steps to verify this information, we advise you to confirm the details of any such material information prior to any offer being submitted. If we are informed of changes to this information by the seller or another third party, we will use reasonable endeavours to update this as soon as practical. 3. Photos, Videos etc: The photographs, property videos and virtual viewings etc. show only certain parts of the property as they appeared at the time they were taken. Areas, measurements and distances given are approximate only. 4. Regulations etc: Any reference to alterations to, or use of, any part of the property does not mean that any necessary planning, building regulations or other consent has been obtained. A buyer must find out by inspection or in other ways that these matters have been properly dealt with and that all information is correct. 5. Fixtures and fittings: A list of the fitted carpets, curtains, light fittings and other items fixed to the property which are included in the sale (or may be available by separate negotiation) will be provided by the Seller's Solicitors. 6. VAT: The VAT position relating to the property may change without notice. 7. To find out how we process Personal Data, please refer to our Group Privacy Statement and other notices at <https://www.knightfrank.com/legals/privacy-statement>.

Particulars dated May 2025. Photographs and videos dated May 2025. All information is correct at the time of going to print. Knight Frank is the trading name of Knight Frank LLP. Knight Frank LLP is a limited liability partnership registered in England and Wales with registered number OC305934. Our registered office is at 55 Baker Street, London W1U 8AN. We use the term 'partner' to refer to a member of Knight Frank LLP, or an employee or consultant. A list of members names of Knight Frank LLP may be inspected at our registered office. If you do not want us to contact you further about our services then please contact us by either calling 020 3544 0692, email to marketing.help@knightfrank.com or post to our UK Residential Marketing Manager at our registered office (above) providing your name and address.