



SPENCER HILL
Wimbledon, SW19



ARCHITECTURAL MASTERPIECE

An exceptional International Modernist residence on one of Wimbledon favourite roads, originally designed and built in 1968 by its architect-owner, later recognised as a RIBA House of Distinction.



Local Authority: London Borough of Merton

Council Tax band: G

Tenure: Freehold

Guide Price: £2,500,000



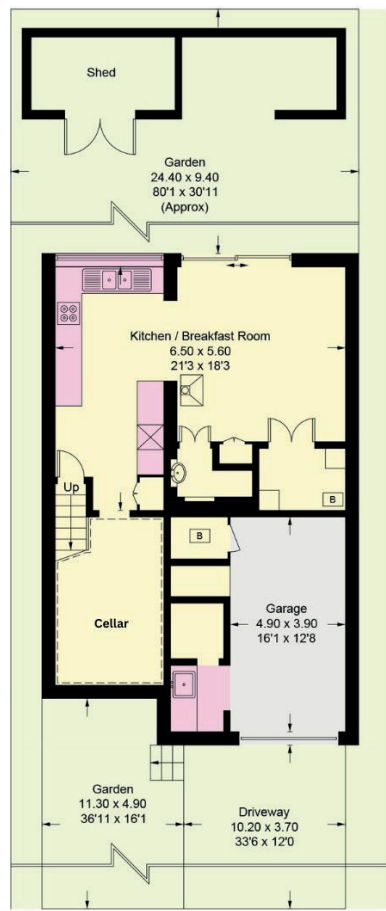
ABOUT THE PROPERTY

Located near to several notable Wimbledon Village schools, this striking five bedroom, three bathroom family home offers a rare opportunity to acquire a property of architectural pedigree, thoughtfully extended and enhanced in keeping with its original vision. Set behind a landscaped courtyard with off-street parking and an integral garage, the house is defined by its clean lines, generous volumes, and seamless integration with its gardens. The living space unfolds across split levels, designed to maximise light and connection between areas. A dramatic reception and dining room span the upper ground floor with wall-to-wall glazing framing views of the mature rear garden. On the lower ground floor, a spacious kitchen, breakfast and family room opens through sliding doors onto an 81-foot landscaped garden — a space designed as an extension of the house itself. A utility area, walk-in larder and ample built-in storage ensure functionality complements form.

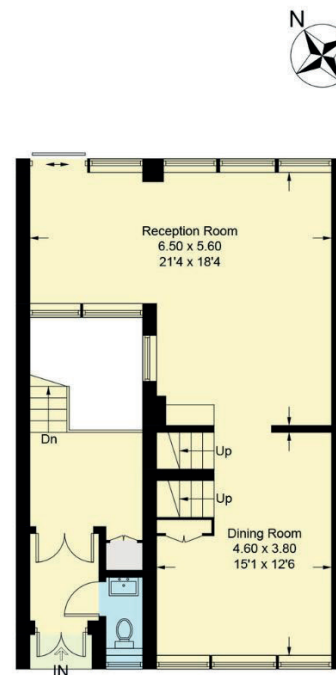
The bedroom accommodation is thoughtfully arranged over the upper floors, with a luxurious principal suite featuring a walk-in wardrobe and en suite, two further family bathrooms, and a versatile study. Two top floor bedrooms and a loft room open out onto a substantial roof terrace, with the copper-clad roofline completing the home's distinctive silhouette. Throughout, bespoke joinery, Shoji screens, maple and beech flooring and internal sightlines between levels lend warmth and texture to the modernist ethos. A landmark in design and a sanctuary of calm, this remarkable home offers scope for further development, subject to the usual consents.



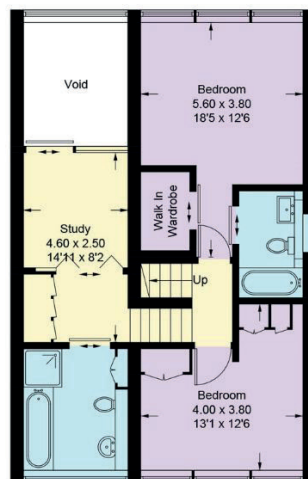




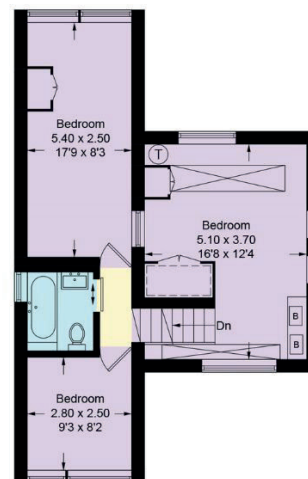
Lower Ground Floor



Upper Ground Floor



Upper Ground Floor



First Floor

Approximate Gross Internal Area = 224.6 sq m / 2417 sq ft
Total = 245.9 sq m / 2636 sq ft

This plan is for layout guidance only. Not drawn to scale unless stated. Windows and door openings are approximate. Whilst every care is taken in the preparation of this plan, please check all dimensions, shapes and compass bearings before making any decisions reliant upon them. (ID767266)

We would be delighted
to tell you more.

Christopher Burton FNAEA

+44 20 3815 9417

chris.burton@knightfrank.com

Knight Frank Wimbledon

58 High Street, London

SW19 5EE

knightfrank.co.uk

Your partners in property

1. Particulars: These particulars are not an offer or contract, nor part of one. You should not rely on statements given by Knight Frank in the particulars, by word of mouth or in writing ("information") as being factually accurate about the property, its condition or its value. Neither Knight Frank nor any joint agent has any authority to make any representations about the property, and accordingly any information given is entirely without responsibility on the part of Knight Frank. 2. Material Information: Please note that the material information is provided to Knight Frank by third parties and is provided here as a guide only. While Knight Frank has taken steps to verify this information, we advise you to confirm the details of any such material information prior to any offer being submitted. If we are informed of changes to this information by the seller or another third party, we will use reasonable endeavours to update this as soon as practical. 3. Photos, Videos etc: The photographs, property videos and virtual viewings etc. show only certain parts of the property as they appeared at the time they were taken. Areas, measurements and distances given are approximate only. 4. Regulations etc: Any reference to alterations to, or use of, any part of the property does not mean that any necessary planning, building regulations or other consent has been obtained. A buyer must find out by inspection or in other ways that these matters have been properly dealt with and that all information is correct. 5. Fixtures and fittings: A list of the fitted carpets, curtains, light fittings and other items fixed to the property which are included in the sale (or may be available by separate negotiation) will be provided by the Seller's Solicitors. 6. VAT: The VAT position relating to the property may change without notice. 7. To find out how we process Personal Data, please refer to our Group Privacy Statement and other notices at <https://www.knightfrank.com/legals/privacy-statement>.

Particulars dated April 2025. Photographs and videos dated April 2025. All information is correct at the time of going to print. Knight Frank is the trading name of Knight Frank LLP. Knight Frank LLP is a limited liability partnership registered in England and Wales with registered number OC305934. Our registered office is at 55 Baker Street, London W1U 8AN. We use the term 'partner' to refer to a member of Knight Frank LLP, or an employee or consultant. A list of members names of Knight Frank LLP may be inspected at our registered office. If you do not want us to contact you further about our services then please contact us by either calling 020 3544 0692, email to marketing.help@knightfrank.com or post to our UK Residential Marketing Manager at our registered office (above) providing your name and address.