



THE DRIVE

Wimbledon, SW20



CHARMING FAMILY HOME

A substantial six-bedroom Victorian semi-detached family home with gated access, landscaped gardens and exceptional lateral living for sale, near to Wimbledon Village.



6



5



4

EPC

D



Local Authority: London Borough of Merton

Council Tax band: G

Tenure: Freehold

Guide Price: £2,750,000



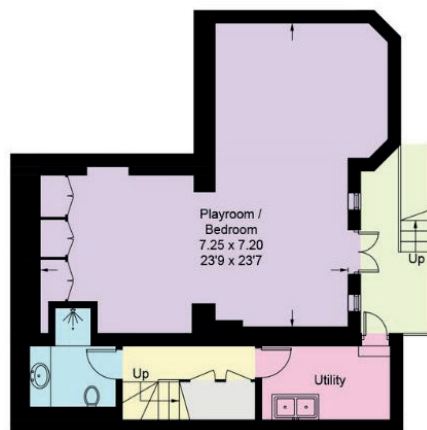
ABOUT THE PROPERTY

Once a school, this six-bedroom, four-bathroom Victorian semi-detached family home is set behind wrought iron gates, offering off-street parking for up to six cars and a private south-facing 100ft garden in a sought-after Wimbledon location. The light-filled ground floor features high ceilings, a formal drawing room with a bay window and fireplace, and spacious reception and dining areas that open onto a secluded garden with a glass-roofed conservatory. The kitchen/family room, designed for both daily living and entertaining, includes French doors to a stone terrace, a central island, integrated appliances, and polished stone surfaces. The lower ground floor is bright and airy, with a versatile room that can be a bedroom or media room, a sleek shower room, ample storage, and a well-equipped utility space with garden access. On the upper floors, six spacious bedrooms include a tranquil principal suite with garden views, a walk in wardrobe, and an en-suite bathroom. There's also generous loft storage.

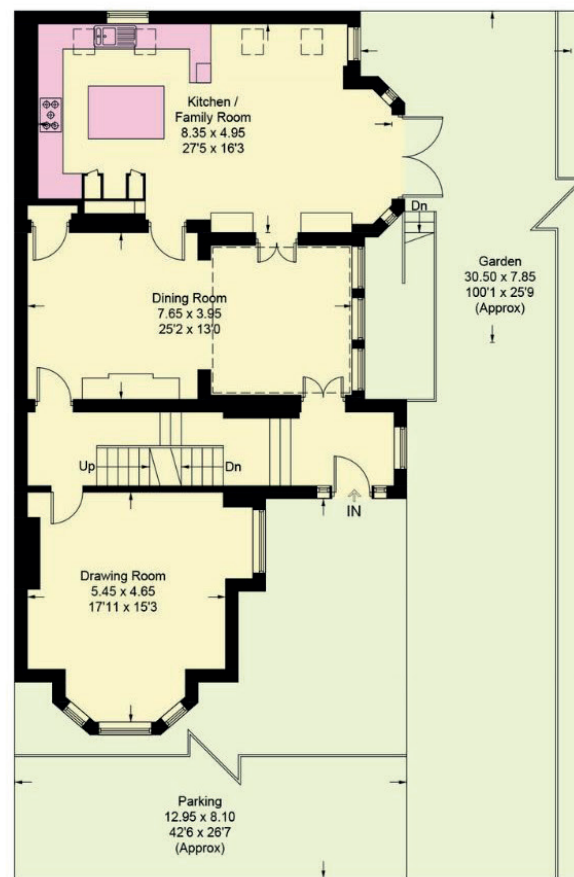




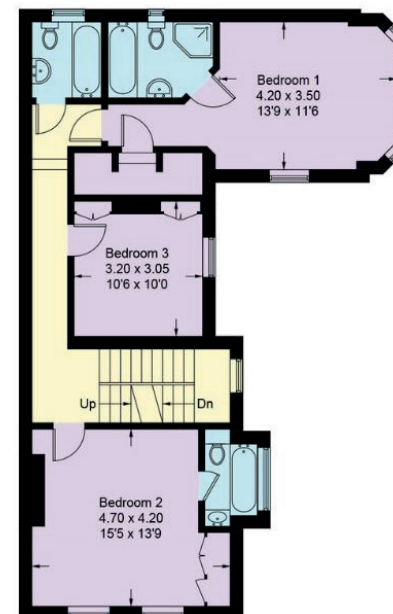




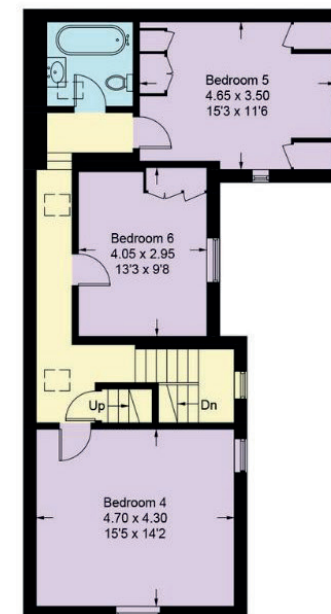
Lower Ground Floor



Ground Floor



First Floor



Second Floor



Loft Storage



Approximate Gross Internal Area = 314.2 sq m / 3382 sq ft
 Loft Storage = 24.2 sq m / 261 sq ft
 Total = 338.4 sq m / 3643 sq ft

This plan is for layout guidance only. Not drawn to scale unless stated. Windows and door openings are approximate. Whilst every care is taken in the preparation of this plan, please check all dimensions, shapes and compass bearings before making any decisions reliant upon them. (ID767266)

We would be delighted
to tell you more.

Christopher Burton FNAEA

+44 20 3815 9417

chris.burton@knightfrank.com

Knight Frank Wimbledon

58 High Street, London

SW19 5EE

knightfrank.co.uk

Your partners in property

1. Particulars: These particulars are not an offer or contract, nor part of one. You should not rely on statements given by Knight Frank in the particulars, by word of mouth or in writing ("information") as being factually accurate about the property, its condition or its value. Neither Knight Frank nor any joint agent has any authority to make any representations about the property, and accordingly any information given is entirely without responsibility on the part of Knight Frank. 2. Material Information: Please note that the material information is provided to Knight Frank by third parties and is provided here as a guide only. While Knight Frank has taken steps to verify this information, we advise you to confirm the details of any such material information prior to any offer being submitted. If we are informed of changes to this information by the seller or another third party, we will use reasonable endeavours to update this as soon as practical. 3. Photos, Videos etc: The photographs, property videos and virtual viewings etc. show only certain parts of the property as they appeared at the time they were taken. Areas, measurements and distances given are approximate only. 4. Regulations etc: Any reference to alterations to, or use of, any part of the property does not mean that any necessary planning, building regulations or other consent has been obtained. A buyer must find out by inspection or in other ways that these matters have been properly dealt with and that all information is correct. 5. Fixtures and fittings: A list of the fitted carpets, curtains, light fittings and other items fixed to the property which are included in the sale (or may be available by separate negotiation) will be provided by the Seller's Solicitors. 6. VAT: The VAT position relating to the property may change without notice. 7. To find out how we process Personal Data, please refer to our Group Privacy Statement and other notices at <https://www.knightfrank.com/legals/privacy-statement>.

Particulars dated May 2025. Photographs and videos dated May 2025. All information is correct at the time of going to print. Knight Frank is the trading name of Knight Frank LLP. Knight Frank LLP is a limited liability partnership registered in England and Wales with registered number OC305934. Our registered office is at 55 Baker Street, London W1U 8AN. We use the term 'partner' to refer to a member of Knight Frank LLP, or an employee or consultant. A list of members names of Knight Frank LLP may be inspected at our registered office. If you do not want us to contact you further about our services then please contact us by either calling 020 3544 0692, email to marketing.help@knightfrank.com or post to our UK Residential Marketing Manager at our registered office (above) providing your name and address.