



## DEEPPDALE

Wimbledon, SW19





# AN EXCEPTIONAL FIVE BEDROOM DETACHED MODERN RESIDENCE

Nestled in a tranquil cul-de-sac within close proximity of Wimbledon Village and Common, this outstanding contemporary recently built, five bedroom detached family home has been meticulously finished to the highest standard throughout.



Local Authority: London Borough of Merton

Council Tax band: H

Tenure: Freehold

Guide Price: £5,750,000





## ABOUT THE PROPERTY

The grand reception hall boasts impressive double-height ceilings and a bespoke curved staircase, creating a sense of space and elegance. Principal reception rooms radiate from this central space, designed for comfort and entertaining. The expansive kitchen features high-spec appliances, granite worktops, and bi-fold doors opening to the landscaped garden. The formal dining room and drawing room also offer garden access, while a versatile study/family room sits at the front. Amenities include a utility room, guest cloakroom, shower room, and integral garage. The first floor offers three opulent bedroom suites, including a principal suite with his-and-hers dressing rooms and a stunning en suite. Two more double bedrooms with en suites complete this level. The top floor provides two additional bedrooms, one ideal as a games or cinema room, alongside a spacious family bathroom. Outside, secure gated parking and a manicured garden with a patio provide the perfect setting for alfresco dining.



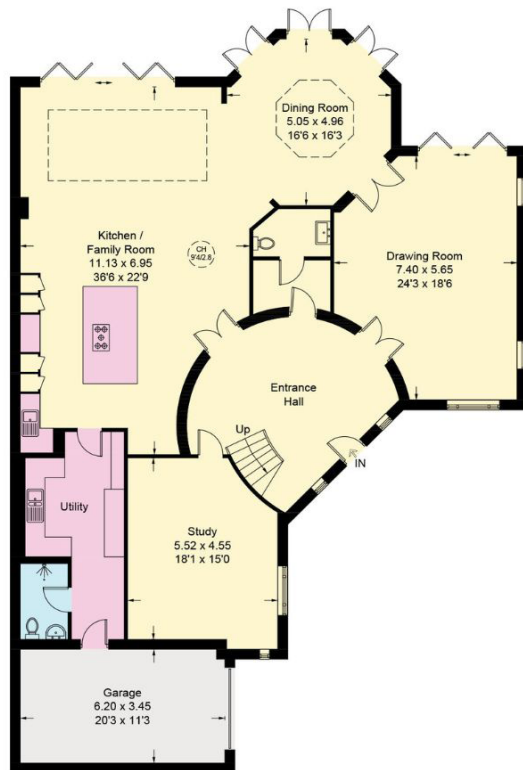








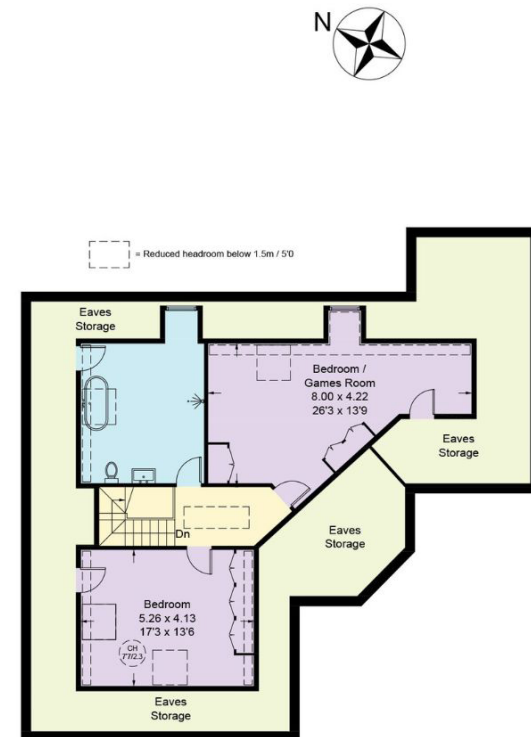




Ground Floor



First Floor



Second Floor

Approximate Gross Internal Area = 539.01 sq m / 5802 sq ft

This plan is for layout guidance only. Not drawn to scale unless stated. Windows and door openings are approximate. Whilst every care is taken in the preparation of this plan, please check all dimensions, shapes and compass bearings before making any decisions reliant upon them. (ID767266)



We would be delighted  
to tell you more.

**Christopher Burton FNAEA**

+44 20 3815 9417

[chris.burton@knightfrank.com](mailto:chris.burton@knightfrank.com)

**Knight Frank Wimbledon**

58 High Street, London

SW19 5EE

[knightfrank.co.uk](https://knightfrank.co.uk)

Your partners in property

1. Particulars: These particulars are not an offer or contract, nor part of one. You should not rely on statements given by Knight Frank in the particulars, by word of mouth or in writing ("information") as being factually accurate about the property, its condition or its value. Neither Knight Frank nor any joint agent has any authority to make any representations about the property, and accordingly any information given is entirely without responsibility on the part of Knight Frank. 2. Material Information: Please note that the material information is provided to Knight Frank by third parties and is provided here as a guide only. While Knight Frank has taken steps to verify this information, we advise you to confirm the details of any such material information prior to any offer being submitted. If we are informed of changes to this information by the seller or another third party, we will use reasonable endeavours to update this as soon as practical. 3. Photos, Videos etc: The photographs, property videos and virtual viewings etc. show only certain parts of the property as they appeared at the time they were taken. Areas, measurements and distances given are approximate only. 4. Regulations etc: Any reference to alterations to, or use of, any part of the property does not mean that any necessary planning, building regulations or other consent has been obtained. A buyer must find out by inspection or in other ways that these matters have been properly dealt with and that all information is correct. 5. Fixtures and fittings: A list of the fitted carpets, curtains, light fittings and other items fixed to the property which are included in the sale (or may be available by separate negotiation) will be provided by the Seller's Solicitors. 6. VAT: The VAT position relating to the property may change without notice. 7. To find out how we process Personal Data, please refer to our Group Privacy Statement and other notices at <https://www.knightfrank.com/legals/privacy-statement>.

Particulars dated March 2025. Photographs and videos dated March 2025. All information is correct at the time of going to print. Knight Frank is the trading name of Knight Frank LLP. Knight Frank LLP is a limited liability partnership registered in England and Wales with registered number OC305934. Our registered office is at 55 Baker Street, London W1U 8AN. We use the term 'partner' to refer to a member of Knight Frank LLP, or an employee or consultant. A list of members names of Knight Frank LLP may be inspected at our registered office. If you do not want us to contact you further about our services then please contact us by either calling 020 3544 0692, email to [marketing.help@knightfrank.com](mailto:marketing.help@knightfrank.com) or post to our UK Residential Marketing Manager at our registered office (above) providing your name and address.