

Longwood Drive,  
London  
SW15





A beautiful, detached family house, beautifully designed and located within Putney Heath and a short distance from Roehampton and Putney.

The ground floor of this stunning property comprises a large entrance hall with views straight through to the garden, two generous reception rooms, a further reception room that is ideal as a TV room, a utility cellar with double washing machines and tumble dryers and a large kitchen/breakfast/family room, bespoke glass extension that leads directly out to the rear garden.

London Borough of Wandsworth  
The guide price is available upon request

Freehold





The first floor includes the principal bedroom with views over the garden and en-suite shower room and four further large double bedrooms all with en-suite facilities. The whole of the second floor is laid out as a TV/games room with a bar, separate cloakroom and great storage throughout.

To the rear of the house is a beautiful garden with patio and lawn areas as well as a home office annexe which is fully connected for internet, electricity and heating and to the front of the property there is a garage and off-street parking for several vehicles.

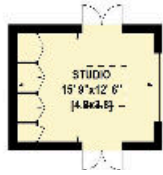


*Longworth Drive is located in this quiet and sought after location in Putney Heath, with easy access to Putney mainline station which offers a regular link to Central London, the many amenities of Putney, a number of excellent schools and is a short distance to Wimbledon Common.*





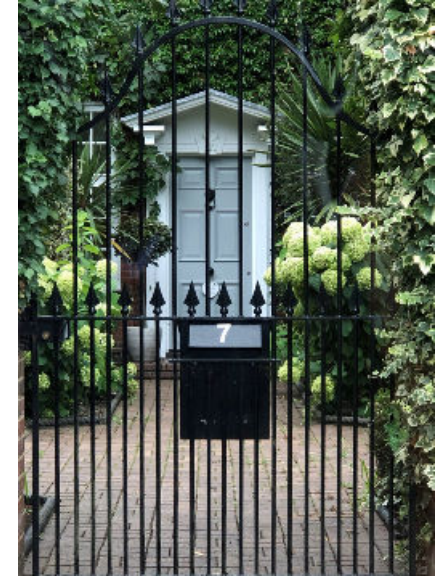




## LONGWOOD DRIVE, SW16

- Approximate Gross Internal Area : 590.4 Sq. metres  
(Including Restricted Height) 6355 Sq. feet
- Approximate Gross Internal Area : 556.9 Sq. metres  
(Excluding Restricted Height) 5995 Sq. feet
- Excluding Garage : 39.8 Sq. metres  
428 Sq. feet
- Excluding Wine Cellar : 10.6 Sq. metres  
114 Sq. feet
- Excluding Studio : 18.1 Sq. metres  
194 Sq. feet

Under 1.5m head height



Knight Frank  
Wimbledon  
81 High Street  
Wimbledon SW19 5EG

[knightfrank.co.uk](https://www.knightfrank.co.uk)

**We would be delighted to tell you more.**

**The Wimbledon sales team**  
020 8946 0026  
wimbledon@knightfrank.com



**Connecting people & property, perfectly.**

Fixtures and fittings: A list of the fitted carpets, curtains, light fittings and other items fixed to the property which are included in the sale (or may be available by separate negotiation) will be provided by the Seller's Solicitors.

Important Notice: 1. Particulars: These particulars are not an offer or contract, nor part of one. You should not rely on statements by Knight Frank LLP in the particulars or by word of mouth or in writing ("information") as being factually accurate about the property, its condition or its value. Neither Knight Frank LLP nor any joint agent has any authority to make any representations about the property, and accordingly any information given is entirely without responsibility on the part of the agents, seller(s) or lessor(s). 2. Photos, Videos etc: The photographs, property videos and virtual viewings etc. show only certain parts of the property as they appeared at the time they were taken. Areas, measurements and distances given are approximate only. 3. Regulations etc: Any reference to alterations to, or use of, any part of the property does not mean that any necessary planning, building regulations or other consent has been obtained. A buyer or lessee must find out by inspection or in other ways that these matters have been properly dealt with and that all information is correct. 4. VAT: The VAT position relating to the property may change without notice. 5. To find out how we process Personal Data, please refer to our Group Privacy Statement and other notices at <https://www.knightfrank.com/legals/privacy-statement>.

Particulars dated [March 2021]. Photographs and videos dated [July 2019].

Knight Frank is the trading name of Knight Frank LLP. Knight Frank LLP is a limited liability partnership registered in England and Wales with registered number OC305934. Our registered office is at 55 Baker Street, London W1U 8AN where you may look at a list of members' names. If we use the term 'partner' when referring to one of our representatives, that person will either be a member, employee, worker or consultant of Knight Frank LLP and not a partner in a partnership. If you do not want us to contact you further about our services then please contact us by either calling 020 3544 0692, email to [marketing.help@knightfrank.com](mailto:marketing.help@knightfrank.com) or post to our UK Residential Marketing Manager at our registered office (above) providing your name and address.