



Hamilton Terrace, St John's Wood NW8



Hamilton Terrace, St John's Wood NW8

An exquisite six bedroom family home (5,126 sq ft/476.3 sq m) with an outstanding rear garden, gated off street parking and garage.

This stunning Victorian house has been meticulously interior designed to create a luxurious home with its exceptional design and attention to detail. Spanning an impressive 5,126 square feet, this exceptional residence features five spacious bedrooms, providing ample space for the whole family. There is an additional staff bedroom, catering to the needs of a live-in staff member or offering flexibility for guest accommodations. The magnificent principal suite occupies the majority of the first floor, complete with a generous dressing room and a large, indulgent en suite bathroom. The property also features a dedicated study, perfect for those seeking a private workspace or home office.



Guide price: £11,400,000

Tenure: Freehold

Local authority: City of Westminster

Council tax band: H

The house features expansive entertaining spaces for both formal and informal occasions, sets across two floors and direct access to a beautifully landscaped rear garden extending to circa 92ft.

The kitchen is fully fitted, complete with a breakfast room, together with a superb conservatory. The house offers parking for two cars, ensuring ease of access and peace of mind. Additionally, the garage has been thoughtfully converted into a gym, or alternative workspace.

The houses also benefit from planning consent to extend (single storey) and remodel the lower ground floor.



Location

Hamilton Terrace is located on the West side of St. John's Wood, an area renowned as one of the most affluent parts of London, being characterised by prime residential properties, boutique shops and restaurants. Hamilton Terrace is one of the highest value roads in St. John's Wood. The house is 450 metres to the southwest of St John's Wood Underground Station, which provides Jubilee line services to the West End, Bond Street (five minutes), London Bridge (14 minutes), and Canary Wharf (20 minutes). Maida Vale Underground Station (Bakerloo line) is less than 500 metres away.

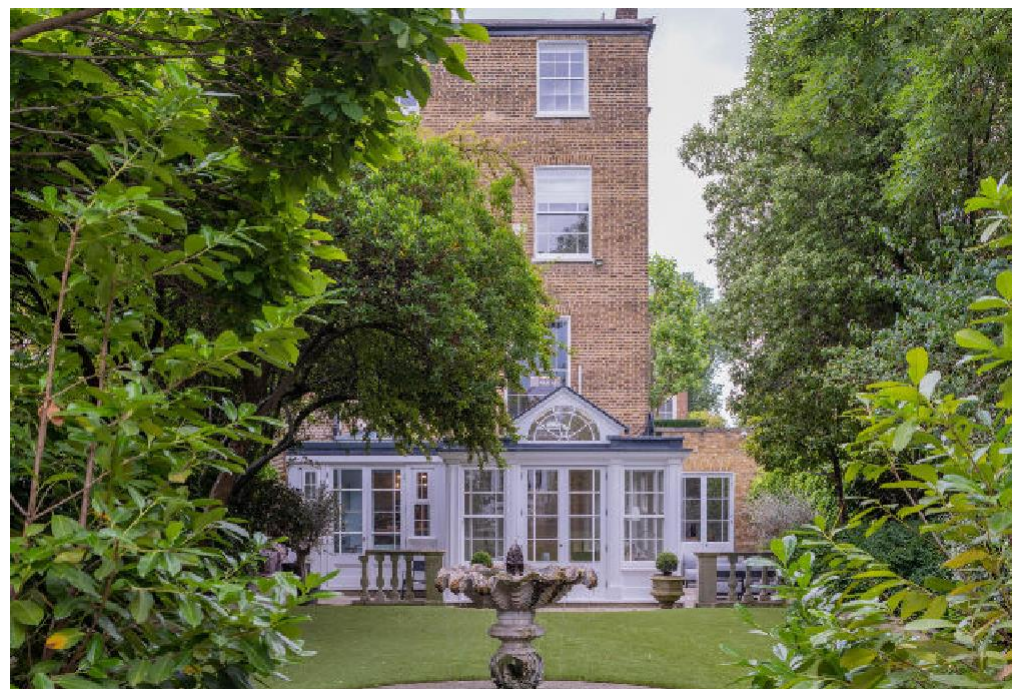
The area is also served by a number of bus routes that run along Wellington Road (A41) and Maida Vale (A5). The excellent amenities of Marylebone, Mayfair and the West End are also easily accessible by road or bus. All distances and times are approximate.









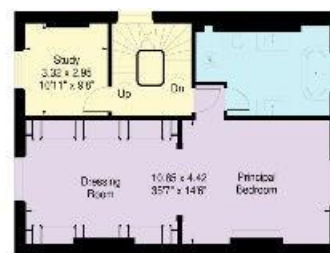


Hamilton Terrace, St John's Wood NW8

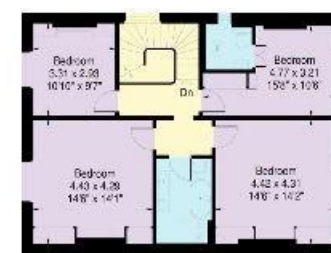
Approximate Gross Internal Area:
Total (existing) - 478.3 sq.m. / 5126 sq.ft.
(Including Garage/Gym & Store Room
50.1 sq.m. / 539 sq.ft.)
(Total including proposed Lower Ground Floor:
485.8 sq.m. / 5226 sq.ft.)



This plan is for guidance only and must not be relied upon as a statement of fact. Attention is drawn to the important notice on the last page of the text of the Particulars.



First Floor



Second Floor



Ground Floor



Knight Frank
St John's Wood
5-7 Wellington Pl
London
NW8 7PB
[knightfrank.co.uk](https://www.knightfrank.co.uk)

I would be delighted to tell you more
Declan Selbo
+44 20 7586 2777
declan.selbo@knightfrank.com



Fixtures and fittings: A list of the fitted carpets, curtains, light fittings and other items fixed to the property which are included in the sale (or may be available by separate negotiation) will be provided by the Seller's Solicitors.

Important Notice: 1. Particulars: These particulars are not an offer or contract, nor part of one. You should not rely on statements by Knight Frank LLP in the particulars or by word of mouth or in writing ("information") as being factually accurate about the property, its condition or its value. Neither Knight Frank LLP nor any joint agent has any authority to make any representations about the property, and accordingly any information given is entirely without responsibility on the part of the agents, seller(s) or lessor(s). 2. Photos, Videos etc: The photographs, property videos and virtual viewings etc. show only certain parts of the property as they appeared at the time they were taken. Areas, measurements and distances given are approximate only. 3. Regulations etc: Any reference to alterations to, or use of, any part of the property does not mean that any necessary planning, building regulations or other consent has been obtained. A buyer or lessee must find out by inspection or in other ways that these matters have been properly dealt with and that all information is correct. 4. VAT: The VAT position relating to the property may change without notice. 5. To find out how we process Personal Data, please refer to our Group Privacy Statement and other notices at <https://www.knightfrank.com/legals/privacy-statement>.

Particulars dated July 2023. Photographs and videos dated August 2024.

All information is correct at the time of going to print. Knight Frank is the trading name of Knight Frank LLP. Knight Frank LLP is a limited liability partnership registered in England and Wales with registered number OC305934. Our registered office is at 55 Baker Street, London W1U 8AN. We use the term 'partner' to refer to a member of Knight Frank LLP, or an employee or consultant. A list of members names of Knight Frank LLP may be inspected at our registered office. If you do not want us to contact you further about our services then please contact us by either calling 020 3544 0692, email to marketing.help@knightfrank.com or post to our UK Residential Marketing Manager at our registered office (above) providing your name and address.