



Blomfield Road, Little Venice W9



Blomfield Road, Little Venice W9

A three bedroom duplex overlooking Little Venice, W9.

Set over the upper floors of a stunning Grade II listed white stucco fronted building, this extremely unique and desirable three bedroom upper maisonette benefits from generous proportions and beautiful views over the waters of Little Venice basin.

Accessed with a private entrance and inviting hall on the ground floor, the first floor provides an expansive double reception room, a separate kitchen with space for dining and views over the canal from the kitchen sink, and a guest cloakroom.



Asking price: £2,700,000

Tenure: Share of freehold plus leasehold, approximately 82 years remaining

Local authority: City of Westminster

Council tax band: G





The top floor provides a large principal bedroom with a walk-in wardrobe, a further double bedroom, a single bedroom and a family bathroom. The beautiful front garden is demised to the property in two sections.

Little Venice is a picturesque location where the Grand Union and Regents Canals meet and is home to a number of waterside cafes, pubs and eateries. From here, you can take a boat trip or follow the tow path on foot and see how the winding waterway snakes its way through the heart of the city. Warwick Road Underground Station (Bakerloo Line) provides access to Central London, and Paddington Station (Bakerloo Line, Circle Line, District Line, Hammersmith & City Line and Elizabeth Line) is just a short walk away.











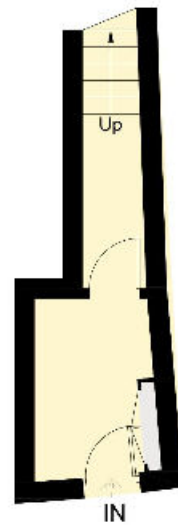
Blomfield Road, W2

Approximate Area = 153.4 sq m / 1650 sq ft
Including Limited Use Area (1.3 sq m / 14 sq ft)



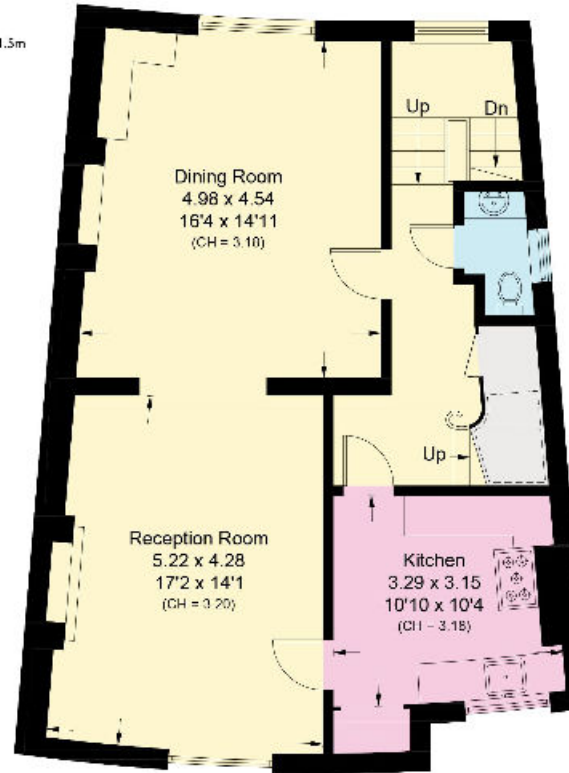
--- = Reduce head height below 1.5m

This plan is for guidance only and must not be relied upon as a statement of fact. Attention is drawn to the important notice on the last page of the text of the Particulars.



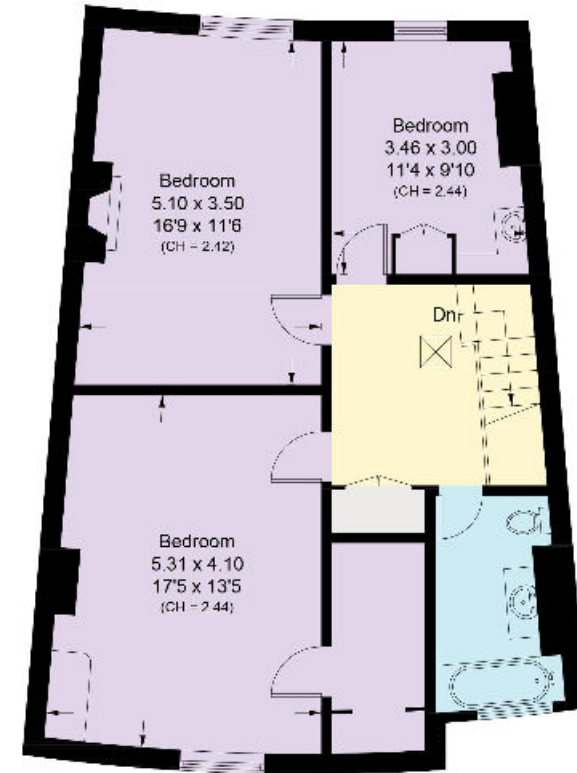
Ground Floor

Approximate Area = 8.5 sq m / 91 sq ft



First Floor

Approximate Area = 72.5 sq m / 780 sq ft
Including Limited Use Area (1.3 sq m / 14 sq ft)



Second Floor

Approximate Area = 72.4 sq m / 779 sq ft

Knight Frank
St John's Wood
5-7 Wellington Pl
London
NW8 7PB
[knightfrank.co.uk](https://www.knightfrank.co.uk)

We would be delighted to tell you more

Tim Perks
+44 20 7871 5065
tim.perks@knightfrank.com

Henry Tait-Harris
+44 20 7483 8345
henrytait-harris@knightfrank.com



Fixtures and fittings: A list of the fitted carpets, curtains, light fittings and other items fixed to the property which are included in the sale (or may be available by separate negotiation) will be provided by the Seller's Solicitors.

Important Notice: 1. Particulars: These particulars are not an offer or contract, nor part of one. You should not rely on statements by Knight Frank LLP in the particulars or by word of mouth or in writing ("information") as being factually accurate about the property, its condition or its value. Neither Knight Frank LLP nor any joint agent has any authority to make any representations about the property, and accordingly any information given is entirely without responsibility on the part of the agents, seller(s) or lessor(s). 2. Photos, Videos etc: The photographs, property videos and virtual viewings etc. show only certain parts of the property as they appeared at the time they were taken. Areas, measurements and distances given are approximate only. 3. Regulations etc: Any reference to alterations to, or use of, any part of the property does not mean that any necessary planning, building regulations or other consent has been obtained. A buyer or lessee must find out by inspection or in other ways that these matters have been properly dealt with and that all information is correct. 4. VAT: The VAT position relating to the property may change without notice. 5. To find out how we process Personal Data, please refer to our Group Privacy Statement and other notices at <https://www.knightfrank.com/legal/privacy-statement>. Particulars dated February 2024. Photographs and videos dated February 2024.

All information is correct at the time of going to print. Knight Frank is the trading name of Knight Frank LLP. Knight Frank LLP is a limited liability partnership registered in England and Wales with registered number OC305934. Our registered office is at 55 Baker Street, London W1U 8AN. We use the term 'partner' to refer to a member of Knight Frank LLP or an employee or consultant. A list of members names of Knight Frank LLP may be inspected at our registered office. If you do not want us to contact you further about our services then please contact us by either calling 020 3544 0692, email to marketing.help@knightfrank.com or post to our UK Residential Marketing Manager at our registered office (above) providing your name and address.