



Rudgwick Terrace, Avenue Road **NW8**



Rudgwick Terrace, Avenue Road **NW8**

An excellent six bedroom family home (3676sqft / 341.51 sqm) with a 40ft rear garden and integral garage superbly located in a private location off Avenue Road, close to Regent's Park and Primrose Hill. This spacious house, which requires modernisation, features generous living spaces, a principal bedroom with en suite bathroom, five further bedrooms, two additional bathrooms, a utility room and guests WC, a large integral garage and off street parking. Rudgwick Terrace is situated within a gated development and located just • a mile from the numerous boutiques and pavement cafes on St John's Wood High Street and close (0.4 miles) to St John's Wood Underground Station (Jubilee Line).



Guide price

£5,450,000

Tenure

Freehold

Local authority

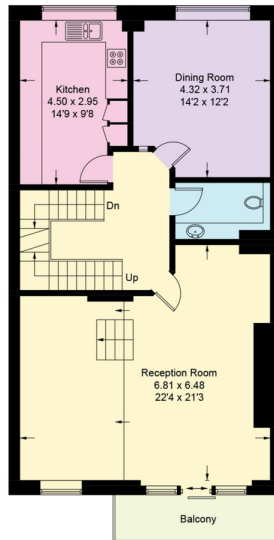
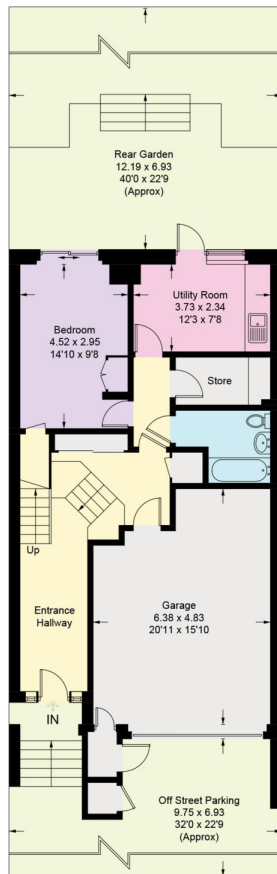
London Borough
of Camden



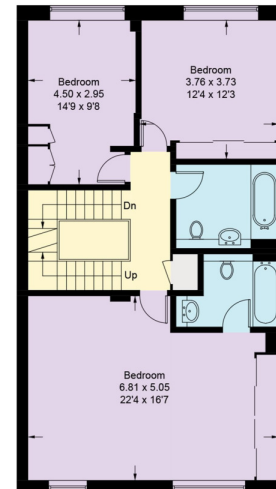


Approximate Gross Internal Floor Area 341.51 sq m / 3,676 sq ft

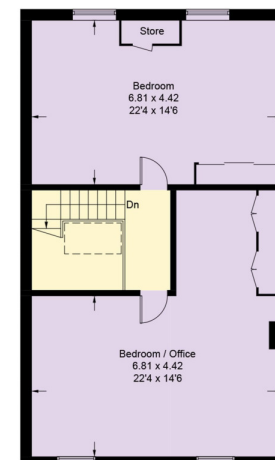
This plan is for guidance only and must not be relied upon as a statement of fact. Attention is drawn to the important notice on the last page of the text of the Particulars.



First Floor



Second Floor



Third Floor

Knight Frank
St John's Wood
5-7 Wellington Place
London
NW8 7PB
knightfrank.co.uk

I would be delighted to call you
Neir Gigi
020 8629 2548
Neir.Gigi@knightfrank.com



Fixtures and fittings: A list of the fitted carpets, curtains, light fittings and other items fixed to the property which are included in the sale (or may be available by separate negotiation) will be provided by the Seller's Solicitors.

Important Notice: 1. Particulars: These particulars are not an offer or contract, nor part of one. You should not rely on statements by Knight Frank LLP in the particulars or by word of mouth or in writing ("information") as being factually accurate about the property, its condition or its value. Neither Knight Frank LLP nor any joint agent has any authority to make any representations about the property, and accordingly any information given is entirely without responsibility on the part of the agents, seller(s) or lessor(s). 2. Photos, Videos etc: The photographs, property videos and virtual viewings etc. show only certain parts of the property as they appeared at the time they were taken. Areas, measurements and distances given are approximate only. 3. Regulations etc: Any reference to alterations to, or use of, any part of the property does not mean that any necessary planning, building regulations or other consent has been obtained. A buyer or lessee must find out by inspection or in other ways that these matters have been properly dealt with and that all information is correct. 4. VAT: The VAT position relating to the property may change without notice. 5. To find out how we process Personal Data, please refer to our Group Privacy Statement and other notices at <https://www.knightfrank.com/legals/privacy-statement>.

Particulars dated August 2020. Photographs and videos dated August 2020.

Knight Frank is the trading name of Knight Frank LLP. Knight Frank LLP is a limited liability partnership registered in England and Wales with registered number OC305934. Our registered office is at 55 Baker Street, London W1U 8AN where you may look at a list of members' names. If we use the term 'partner' when referring to one of our representatives, that person will either be a member, employee, worker or consultant of Knight Frank LLP and not a partner in a partnership. If you do not want us to contact you further about our services then please contact us by either calling 020 3544 0692, email to marketing.help@knightfrank.com or post to our UK Residential Marketing Manager at our registered office (above) providing your name and address.