



HOLBEIN PLACE

Belgravia SW1W



IMMACULATELY CRAFTED TOWNHOUSE

Finished to an exceptional standard, the property combines high-quality natural materials, bespoke joinery, and a refined, understated design aesthetic throughout.



3



2



2

EPC

C

Local Authority: Royal Borough of Kensington and Chelsea

Council Tax band: H

Tenure: Freehold

Guide Price: £7,500,000



The ground floor provides a well-planned kitchen and dining area with views onto mature greenery. The kitchen features custom timber cabinetry, stone worktops and a large central island, creating a functional space for both everyday use and informal entertaining. A sitting room lies adjacent, offering a quiet and comfortable area for relaxation.

A spacious reception room occupies the principal living level and is defined by its clean architectural lines, natural textures, and excellent light. The room offers generous proportions, making it suitable for both formal entertaining and day-to-day living.







The bedroom accommodation is arranged across the upper floors. Two well-sized bedrooms and two bathrooms sit on the second level, each finished with bespoke wardrobes and a neutral palette. The top floor is dedicated to an impressive principal suite with a tailored dressing room, a bathroom featuring a sculptural stone bathtub, and access to a private terrace. The suite provides a calm and secluded space with leafy outlooks.

The house has been redesigned with careful attention to flow, materials, and craftsmanship. Consistent use of timber, plaster and stone creates a harmonious atmosphere, while the curved central staircase provides an architectural focal point.



Located in one of Chelsea's most desirable residential streets, the property offers immediate access to the amenities of Sloane Square and King's Road, along with excellent transport links and proximity to some of London's finest restaurants, shops, and cultural destinations.

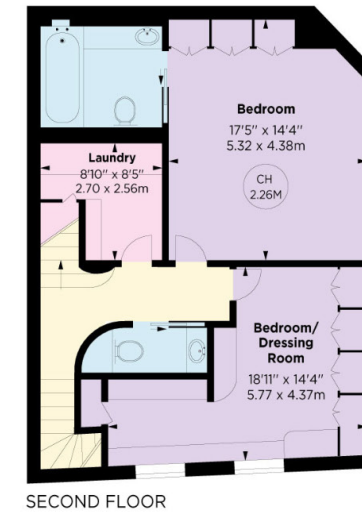
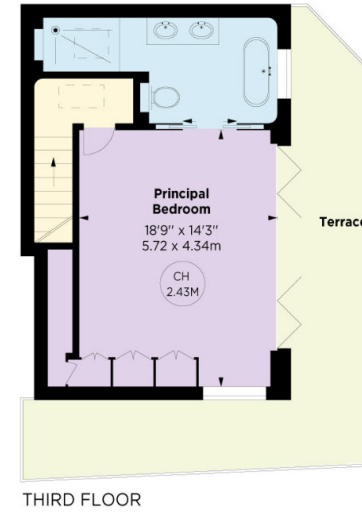
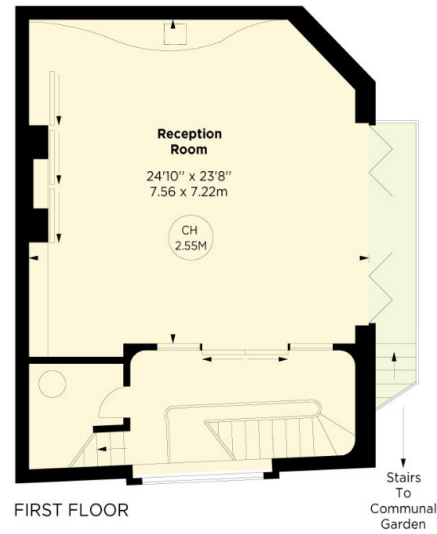
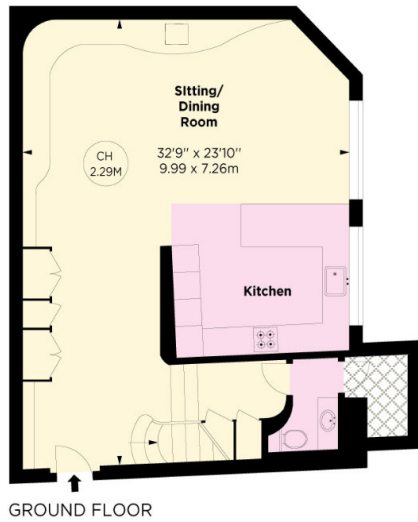








Key :
CH - Ceiling Height
⊞ - Under 1.5m



Approximate Gross Internal Area = 258.05 sq m / 2777 sq ft

This plan is for layout guidance only. Not drawn to scale unless stated. Windows and door openings are approximate. Whilst every care is taken in the preparation of this plan, please check all dimensions, shapes and compass bearings before making any decisions reliant upon them. (ID767266)

We would be delighted
to tell you more.

Paul Westwood
020 3371 3132
paul.westwood@knightfrank.com

Knight Frank Knightsbridge
52-54 Sloane Avenue
SW3 3DD

knightfrank.co.uk

Your partners in property

1. Particulars: These particulars are not an offer or contract, nor part of one. You should not rely on statements given by Knight Frank in the particulars, by word of mouth or in writing ("information") as being factually accurate about the property, its condition or its value. Neither Knight Frank nor any joint agent has any authority to make any representations about the property, and accordingly any information given is entirely without responsibility on the part of Knight Frank. 2. Material Information: Please note that the material information is provided to Knight Frank by third parties and is provided here as a guide only. While Knight Frank has taken steps to verify this information, we advise you to confirm the details of any such material information prior to any offer being submitted. If we are informed of changes to this information by the seller or another third party, we will use reasonable endeavours to update this as soon as practical. 3. Photos, Videos etc: The photographs, property videos and virtual viewings etc. show only certain parts of the property as they appeared at the time they were taken. Areas, measurements and distances given are approximate only. 4. Regulations etc: Any reference to alterations to, or use of, any part of the property does not mean that any necessary planning, building regulations or other consent has been obtained. A buyer must find out by inspection or in other ways that these matters have been properly dealt with and that all information is correct. 5. Fixtures and fittings: A list of the fitted carpets, curtains, light fittings and other items fixed to the property which are included in the sale (or may be available by separate negotiation) will be provided by the Seller's Solicitors. 6. VAT: The VAT position relating to the property may change without notice. 7. To find out how we process Personal Data, please refer to our Group Privacy Statement and other notices at <https://www.knightfrank.com/legals/privacy-statement>.

Particulars dated May 2024. Photographs and videos dated March 2024. All information is correct at the time of going to print. Knight Frank is the trading name of Knight Frank LLP. Knight Frank LLP is a limited liability partnership registered in England and Wales with registered number OC305934. Our registered office is at 55 Baker Street, London W1U 8AN. We use the term 'partner' to refer to a member of Knight Frank LLP, or an employee or consultant. A list of members names of Knight Frank LLP may be inspected at our registered office. If you do not want us to contact you further about our services then please contact us by either calling 020 3544 0692, email to marketing.help@knightfrank.com or post to our UK Residential Marketing Manager at our registered office (above) providing your name and address.