



HALSEY STREET,
Chelsea SW3



LUXURIOUS LIVING IN A SOUGHT-AFTER LOCATION

This beautifully designed Grade II listed family home in the heart of Chelsea offers elegant proportions, exceptional quality, and timeless style throughout.



Local Authority: Royal Borough of Kensington and Chelsea

Council Tax band: H

Tenure: Freehold

Guide Price: £5,950,000



HALSEY STREET, CHELSEA SW3

The lower ground floor features a gorgeous kitchen with Crittall-style glass doors opening onto a charming private garden, which enjoys excellent morning light. This level also includes a versatile seating area, a spacious dining area for ten guests, and a guest WC.

The ground floor boasts an impressive double reception room, seamlessly extending onto a terrace, alongside practical coatboards and an additional storage area on the half-landing.







WHERE COMFORT MEETS CONVENIENCE

The upper floors are dedicated to well-appointed bedroom accommodation, including a luxurious principal suite on the first floor. Three further bedrooms, a family bathroom, a shower room, and a utility room are arranged across the second and third floors.

The house offers approximately 2,383 sq. ft. (221.4 sq. m.) of beautifully balanced living space in one of London's most sought-after locations.



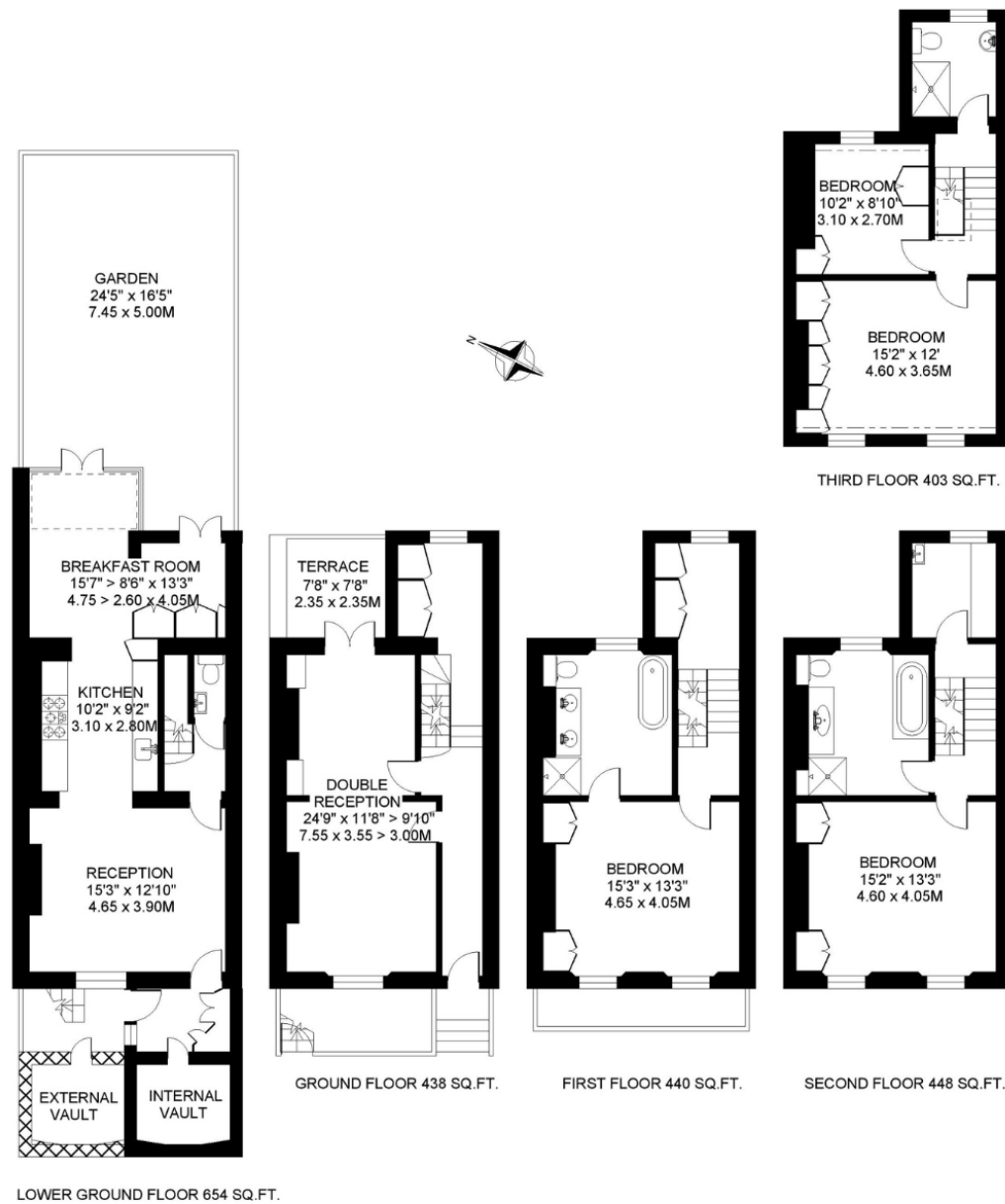
THE BEST OF LONDON AT YOUR DOORSTEP

Located in South West London, Halsey Street offers excellent connections to the area's key spots. Sloane Square lies just 0.3 miles away, and South Kensington is 0.5 miles from your door. Hyde Park Corner Station is within 1 mile, providing convenient transport links across London. Enjoy nearby green spaces such as Hyde Park, Flanders Fields Memorial Garden, and Kensington Gardens, are all 1 mile away. For shopping and culture, Harrods is 0.4 mile away, and the Natural History Museum is 0.5 miles from the property. Whether you're looking to explore museums, enjoy outdoor parks, or access top shopping destinations, this location meets a variety of lifestyle needs. All times and distances are approximate.









Approximate Gross Internal Area = 221.4 sq m / 2383 sq ft

This plan is for layout guidance only. Not drawn to scale unless stated. Windows and door openings are approximate. Whilst every care is taken in the preparation of this plan, please check all dimensions, shapes and compass bearings before making any decisions reliant upon them. (ID767266)

We would be delighted
to tell you more.

Roly Ingleby-MacKenzie

020 7861 1790

Roly.IM@knightfrank.com

Knight Frank Knightsbridge

52-54 Sloane Avenue

SW3 3DD

[knightfrank.co.uk](https://www.knightfrank.co.uk)

Your partners in property

1. Particulars: These particulars are not an offer or contract, nor part of one. You should not rely on statements given by Knight Frank in the particulars, by word of mouth or in writing ("information") as being factually accurate about the property, its condition or its value. Neither Knight Frank nor any joint agent has any authority to make any representations about the property, and accordingly any information given is entirely without responsibility on the part of Knight Frank. 2. Material Information: Please note that the material information is provided to Knight Frank by third parties and is provided here as a guide only. While Knight Frank has taken steps to verify this information, we advise you to confirm the details of any such material information prior to any offer being submitted. If we are informed of changes to this information by the seller or another third party, we will use reasonable endeavours to update this as soon as practical. 3. Photos, Videos etc: The photographs, property videos and virtual viewings etc. show only certain parts of the property as they appeared at the time they were taken. Areas, measurements and distances given are approximate only. 4. Regulations etc: Any reference to alterations to, or use of, any part of the property does not mean that any necessary planning, building regulations or other consent has been obtained. A buyer must find out by inspection or in other ways that these matters have been properly dealt with and that all information is correct. 5. Fixtures and fittings: A list of the fitted carpets, curtains, light fittings and other items fixed to the property which are included in the sale (or may be available by separate negotiation) will be provided by the Seller's Solicitors. 6. VAT: The VAT position relating to the property may change without notice. 7. To find out how we process Personal Data, please refer to our Group Privacy Statement and other notices at <https://www.knightfrank.com/legals/privacy-statement>.

Particulars dated May 2024. Photographs and videos dated May 2024. All information is correct at the time of going to print. Knight Frank is the trading name of Knight Frank LLP. Knight Frank LLP is a limited liability partnership registered in England and Wales with registered number OC305934. Our registered office is at 55 Baker Street, London W1U 8AN. We use the term 'partner' to refer to a member of Knight Frank LLP, or an employee or consultant. A list of members names of Knight Frank LLP may be inspected at our registered office. If you do not want us to contact you further about our services then please contact us by either calling 020 3544 0692, email to marketing.help@knightfrank.com or post to our UK Residential Marketing Manager at our registered office (above) providing your name and address.