



First Street, Chelsea **SW3**

---





# First Street, Chelsea SW3

This perfect city home, full of light, stands out through an entrance hall of generous width unlike anything in the area. Spanning approximately 2,773 sq. ft. (257.6 sqm), the property offers excellent living and entertaining spaces as well as very large bedrooms, with the benefit of two outdoor areas.

Beautiful First street is well-served by excellent transport links, with South Kensington, Knightsbridge and Sloane Square Underground Stations nearby. This location perfectly combines a peaceful residential setting with the convenience of everything central London has to offer.



4



3



2



EPC  
D

**Guide price:** £5,400,000

**Tenure:** Available freehold

**Local authority:** Royal Borough of Kensington and Chelsea

**Council tax band:** H









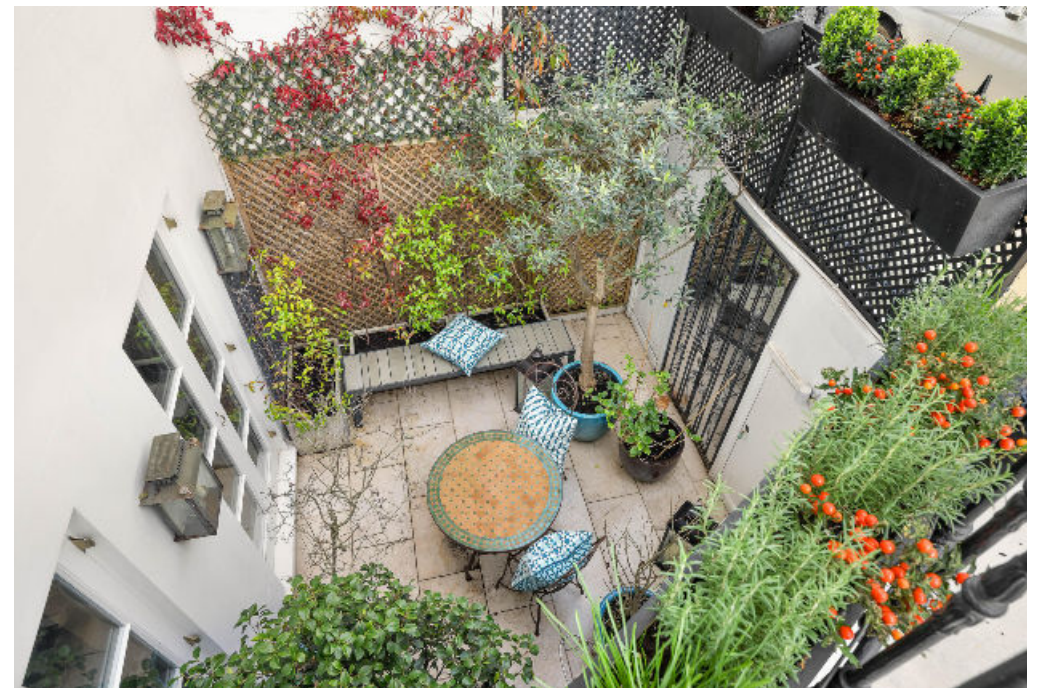


The lower ground floor features an open-plan kitchen, dining, and family room extending nearly 31 feet, opening onto a gorgeous patio. There are also two useful storage vaults. The raised ground floor includes a bright reception room with high ceilings and a separate office looking onto a terrace. There is also an entrance hall of unusual width.

The first floor is home to the principal bedroom suite, which includes a dressing room, en suite bathroom, a second office or dressing room, and access to a flat roof terrace. The upper floors provide three further bedrooms, two bathrooms, and additional amenities including a Sonos sound system on four floors, wide built-in closets in every bedroom, two built-in safes, and oak floors throughout.



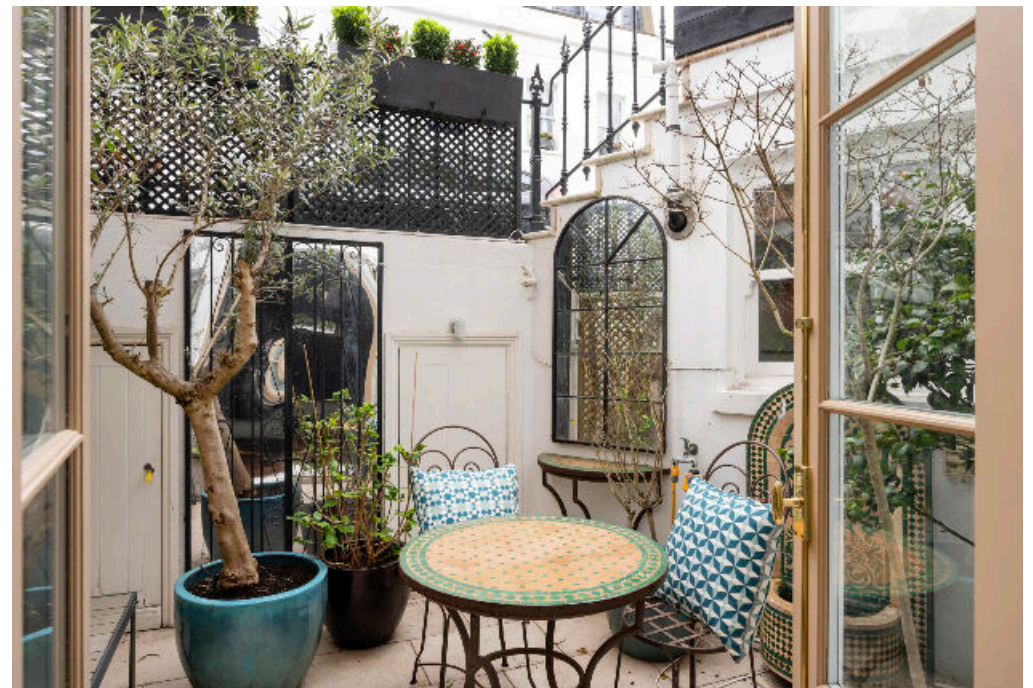
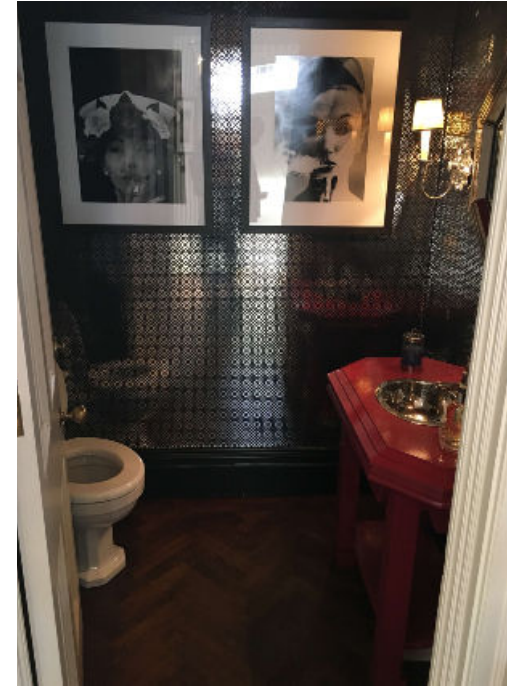












## First Street, SW3

**Approximate Gross Internal Floor Area**  
**257.6 sq m / 2773 sq ft**

This plan is for guidance only and must not be relied upon as a statement of fact. Attention is drawn to the important notice on the last page of the text of the Particulars.



Knight Frank

Knightbridge

52 - 54 Sloane Avenue

London

SW3 3DD

[knightfrank.co.uk](https://www.knightfrank.co.uk)

I would be delighted to tell you more

Paul Westwood

+44 20 3371 3132

[paul.westwood@knightfrank.com](mailto:paul.westwood@knightfrank.com)



Fixtures and fittings: A list of the fitted carpets, curtains, light fittings and other items fixed to the property which are included in the sale (or may be available by separate negotiation) will be provided by the Seller's Solicitors.

Important Notice: 1. Particulars: These particulars are not an offer or contract, nor part of one. You should not rely on statements by Knight Frank LLP in the particulars or by word of mouth or in writing ("information") as being factually accurate about the property, its condition or its value. Neither Knight Frank LLP nor any joint agent has any authority to make any representations about the property, and accordingly any information given is entirely without responsibility on the part of the agents, seller(s) or lessor(s). 2. Photos, Videos etc: The photographs, property videos and virtual viewings etc. show only certain parts of the property as they appeared at the time they were taken. Areas, measurements and distances given are approximate only. 3. Regulations etc: Any reference to alterations to, or use of, any part of the property does not mean that any necessary planning, building regulations or other consent has been obtained. A buyer or lessee must find out by inspection or in other ways that these matters have been properly dealt with and that all information is correct. 4. VAT: The VAT position relating to the property may change without notice. 5. To find out how we process Personal Data, please refer to our Group Privacy Statement and other notices at <https://www.knightfrank.com/legals/privacy-statement>.

Particulars dated December 2024. Photographs and videos dated December 2024.

Knight Frank is the trading name of Knight Frank LLP. Knight Frank LLP is a limited liability partnership registered in England and Wales with registered number OC305934. Our registered office is at 55 Baker Street, London W1U 8AN where you may look at a list of members' names. If we use the term 'partner' when referring to one of our representatives, that person will either be a member, employee, worker or consultant of Knight Frank LLP and not a partner in a partnership. If you do not want us to contact you further about our services then please contact us by either calling 020 3544 0692, email to [marketing.help@knightfrank.com](mailto:marketing.help@knightfrank.com) or post to our UK Residential Marketing Manager at our registered office (above) providing your name and address.