

Pangbourne Avenue, North Kensington W10





Guide price
£1,995,000

Freehold



This freehold end-of terrace house has been completely remodeled into a thoroughly interesting modern and architectural family home.

The existing ground floor walls were knocked down to create an open-plan hall-kitchen-dining-living space - and the floor was dropped by 20cm to make the space taller.

The ground floor features a sunshine yellow kitchen with stylish storage cupboards concealing the dishwasher, ovens and bins. There is further built in storage concealed leading off the kitchen. The open plan living and dining area flow out to a sunny garden via double glazed doors.

Semi-transparent glass flooring allows even more light into the basement below, and gives the illusion of a double-height space. The basement accommodation is flexible. The basement has a fully glazed facade leading to a courtyard.

The courtyard garden fitted with IPE decking is flush with the floor, which makes the basement feel more spacious and light.

The first floor of the main house features the master bedroom with a light bay window and study, a further double bedroom is situated at the rear with a master bathroom. The second floor contains a large double bedroom with en-suite shower room.

What used to be an artist's studio and a triangular slice of the basement has now been converted into a two-bedroom apartment which could also be used as a separate nanny annex.

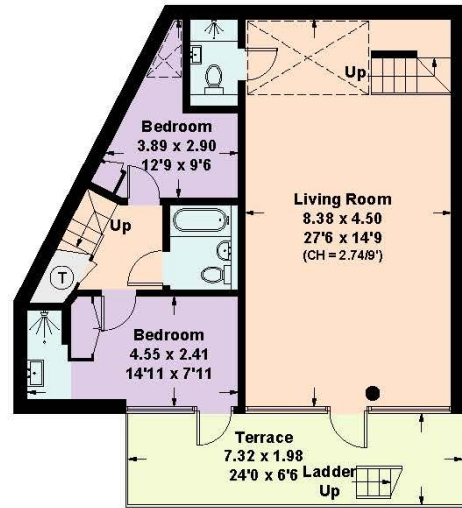




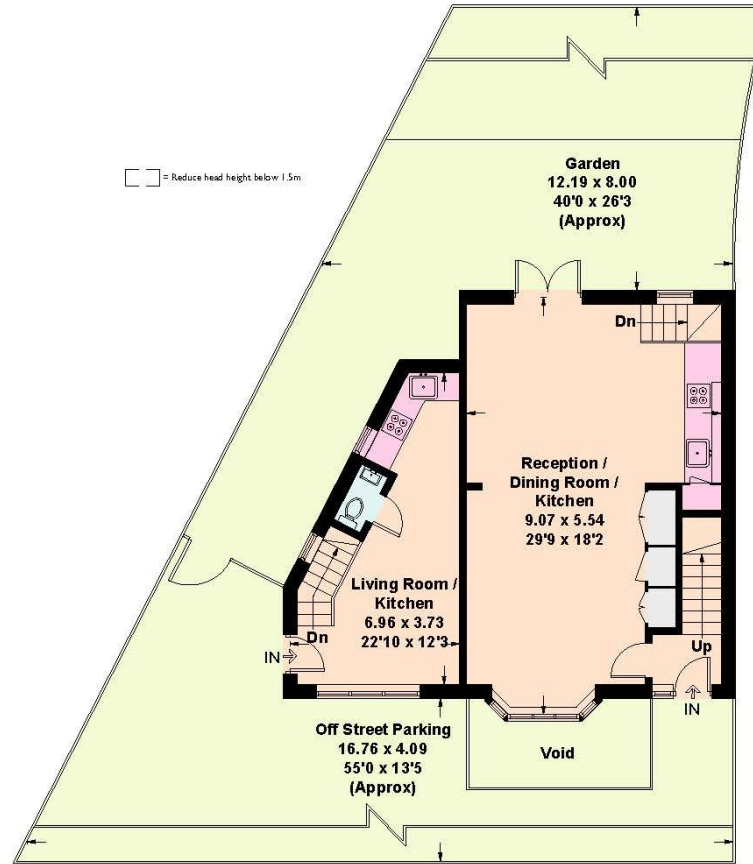
**Approximate Gross Internal Floor Area
221.3 sq m/ 2382 sq ft**

This plan is for guidance only and must not be relied upon as a statement of fact. Attention is drawn to the Important Notice on the last page of the text of the Particulars

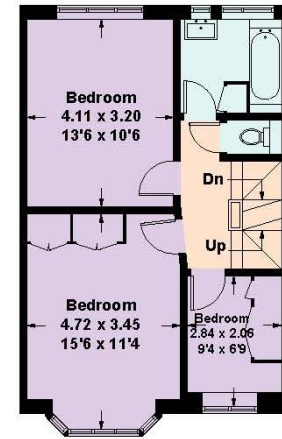
= Reduce head height below 1.5m.



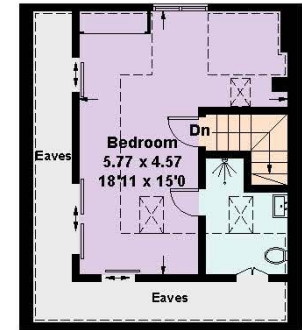
Lower Ground Floor



Ground Floor



First Floor



Second Floor

Knight Frank
Notting Hill
294 Westbourne
Grove
London

knightfrank.co.uk

I would be delighted to tell you more.

Chelsea Whelan
020 7229 0229
chelsea.whelan@knightfrank.com



Connecting people & property, perfectly.

Fixtures and fittings: A list of the fitted carpets, curtains, light fittings and other items fixed to the property which are included in the sale (or may be available by separate negotiation) will be provided by the Seller's Solicitors.

Important Notice: 1. Particulars: These particulars are not an offer or contract, nor part of one. You should not rely on statements by Knight Frank LLP in the particulars or by word of mouth or in writing ("information") as being factually accurate about the property, its condition or its value. Neither Knight Frank LLP nor any joint agent has any authority to make any representations about the property, and accordingly any information given is entirely without responsibility on the part of the agents, seller(s) or lessor(s). 2. Photos, Videos etc: The photographs, property videos and virtual viewings etc. show only certain parts of the property as they appeared at the time they were taken. Areas, measurements and distances given are approximate only. 3. Regulations etc: Any reference to alterations to, or use of, any part of the property does not mean that any necessary planning, building regulations or other consent has been obtained. A buyer or lessee must find out by inspection or in other ways that these matters have been properly dealt with and that all information is correct. 4. VAT: The VAT position relating to the property may change without notice. 5. To find out how we process Personal Data, please refer to our Group Privacy Statement and other notices at <https://www.knightfrank.com/legals/privacy-statement>.

Particulars dated [xxxxxxxx 20xx]. Photographs and videos dated [xxxxxxxx 20xx].

Knight Frank is the trading name of Knight Frank LLP. Knight Frank LLP is a limited liability partnership registered in England and Wales with registered number OC305934. Our registered office is at 55 Baker Street, London W1U 8AN where you may look at a list of members' names. If we use the term 'partner' when referring to one of our representatives, that person will either be a member, employee, worker or consultant of Knight Frank LLP and not a partner in a partnership. If you do not want us to contact you further about our services then please contact us by either calling 020 3544 0692, email to marketing.help@knightfrank.com or post to our UK Residential Marketing Manager at our registered office (above) providing your name and address.