



LADBROKE GARDENS

Notting Hill W11



LUXURY VICTORIAN DUPLEX WITH GARDEN ACCESS

A fantastic, south facing duplex apartment facing south over communal gardens in Notting Hill.


3


2


1

EPC
D





Local Authority: Royal Borough of Kensington and Chelsea
Council Tax band: E

Tenure: Leasehold, approximately 152 years remaining
Ground rent: £34 per annum, revied every year, next review date 2026
Service charge: £3,527 per annum, reviewed every year, next review due 2026

Guide Price: £3,800,000



A SEAMLESS BLEND OF HERITAGE & CONTEMPORARY

This exceptional three-bedroom Victorian duplex apartment, set across the ground and lower ground floors of this exceptional period building combines classic charm with modern luxury, offering an enviable living experience in the heart of Notting Hill. Located on the prestigious Ladbroke Gardens, the property is bathed in natural light and boasts an impressive sense of space and volume.

Having undergone a meticulous refurbishment to the highest specification, the apartment presents a seamless blend of heritage character and contemporary style. The expansive open-plan living area on the raised ground floor is flooded with natural light, courtesy of large windows and high ceilings that enhance the sense of space. A bespoke kitchen flows effortlessly into the reception area, creating the perfect setting for both relaxed living and entertaining.





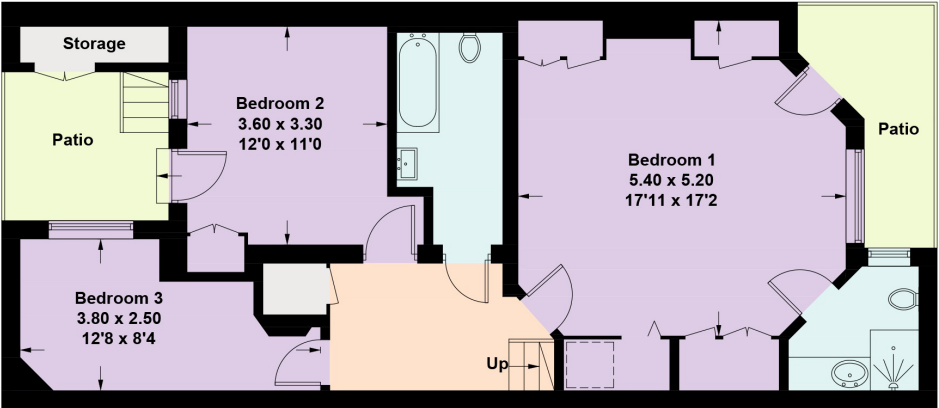
A PEACEFUL SANCTUARY WITH HIGH-END FINISHES

The lower ground floor houses three well-proportioned bedrooms, each offering a peaceful sanctuary. The master suite is a standout, featuring elegant finishes, a luxurious en-suite shower room, and direct access to the communal garden. The two additional bedrooms provide ample room for guests or family, with one offering direct access to a second private terrace.

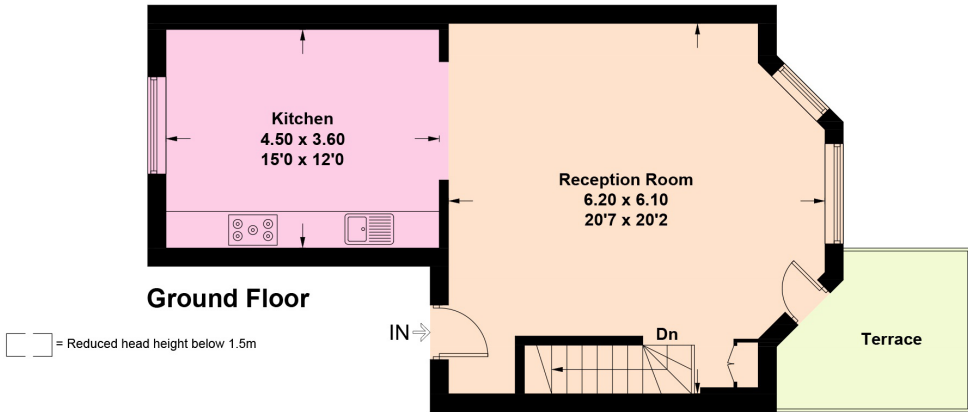
The property benefits from direct access to the beautifully maintained communal gardens of Ladbroke Gardens, providing a tranquil escape right on your doorstep. With a high-end refurbishment that combines sophisticated design with careful attention to detail, this apartment is the epitome of modern living in one of London's most sought-after locations.



Ladbroke Gardens, W11



Lower Ground Floor



Ground Floor



Approximate Gross Internal Area = 132.42 sq m / 1,425 sq ft

This plan is for layout guidance only. Not drawn to scale unless stated. Windows and door openings are approximate. Whilst every care is taken in the preparation of this plan, please check all dimensions, shapes and compass bearings before making any decisions reliant upon them. (ID767266)



Jack Thomas

+44 20 3910 9732

jack.thomas@knightfrank.com

Knight Frank Notting Hill

294 Westbourne Grove

W11 2PS

[knightfrank.co.uk](https://www.knightfrank.co.uk)

Your partners in property

1. Particulars: These particulars are not an offer or contract, nor part of one. You should not rely on statements given by Knight Frank in the particulars, by word of mouth or in writing ("information") as being factually accurate about the property, its condition or its value. Neither Knight Frank nor any joint agent has any authority to make any representations about the property, and accordingly any information given is entirely without responsibility on the part of Knight Frank. 2. Material Information: Please note that the material information is provided to Knight Frank by third parties and is provided here as a guide only. While Knight Frank has taken steps to verify this information, we advise you to confirm the details of any such material information prior to any offer being submitted. If we are informed of changes to this information by the seller or another third party, we will use reasonable endeavours to update this as soon as practical. 3. Photos, Videos etc: The photographs, property videos and virtual viewings etc. show only certain parts of the property as they appeared at the time they were taken. Areas, measurements and distances given are approximate only. 4. Regulations etc: Any reference to alterations to, or use of, any part of the property does not mean that any necessary planning, building regulations or other consent has been obtained. A buyer must find out by inspection or in other ways that these matters have been properly dealt with and that all information is correct. 5. Fixtures and fittings: A list of the fitted carpets, curtains, light fittings and other items fixed to the property which are included in the sale (or may be available by separate negotiation) will be provided by the Seller's Solicitors. 6. VAT: The VAT position relating to the property may change without notice. 7. To find out how we process Personal Data, please refer to our Group Privacy Statement and other notices at <https://www.knightfrank.com/legals/privacy-statement>.
Particulars dated September 2025. Photographs and videos dated September 2025. All information is correct at the time of going to print. Knight Frank is the trading name of Knight Frank LLP. Knight Frank LLP is a limited liability partnership registered in England and Wales with registered number OC305934. Our registered office is at 55 Baker Street, London W1U 8AN. We use the term 'partner' to refer to a member of Knight Frank LLP, or an employee or consultant. A list of members names of Knight Frank LLP may be inspected at our registered office. If you do not want us to contact you further about our services then please contact us by either calling 020 3544 0692, email to marketing.help@knightfrank.com or post to our UK Residential Marketing Manager at our registered office (above) providing your name and address.

