



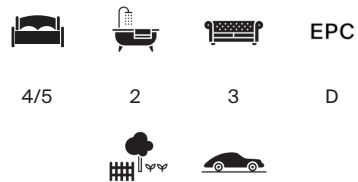
BLENHEIM CRESCENT

Notting Hill, W11



BLLENHEIM CRESCENT NOTTING HILL, W11

Notting Hill communal garden heaven



Local Authority: Royal Borough of Kensington and Chelsea

Council Tax band: H

Tenure: Freehold

Guide price: £6,850,000



SAME FAMILY OWNERSHIP FOR OVER FIFTY YEARS

This wider than average four/five bedroom home sits on one of Notting Hill's most sought after communal garden crescents, offering off street parking and direct access to the Elgin/Blenheim gardens.

Bathed in natural light, the raised ground floor features a bay fronted reception, a wisteria draped balcony, and steps to a south facing garden with open views. The spacious lower ground floor hosts an open plan kitchen, dining and family room with French doors to the private garden. Upstairs, the principal suite includes an en suite, dressing room (or fifth bedroom), while three further bedrooms and a family bathroom occupy the upper floors.

Blenheim Crescent is positioned moments from Westbourne Grove, with an array of boutique shops, cafés and world class schools, all on your doorstep.







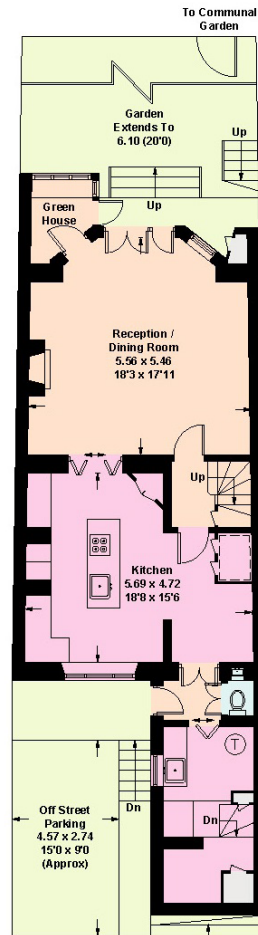
Blenheim Crescent, W11

Approximate Gross Internal Area = 241.3 sq m / 2597sq ft

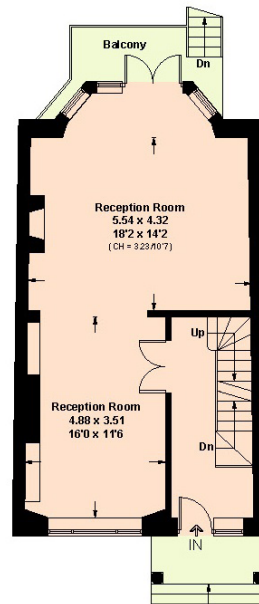
Lofts = 40.4 sq m / 435 sq ft

Total = 281.7 sq m / 3032 sq ft

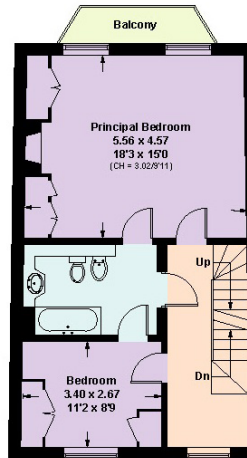
Including Limited Use Area (43.9 sq m / 472 sq ft)



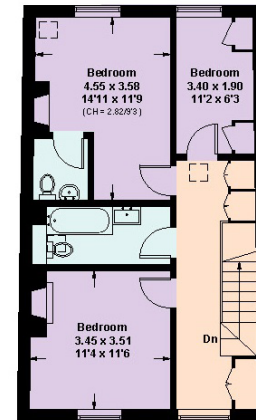
Lower Ground Floor



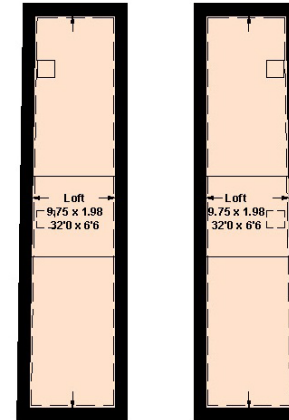
Raised Ground Floor



First Floor



Second Floor



Lofts

This plan is for layout guidance only. Not drawn to scale unless stated. Windows and door openings are approximate. Whilst every care is taken in the preparation of this plan, please check all dimensions, shapes and compass bearings before making any decisions reliant upon them. (ID767266)

We would be delighted
to tell you more.

Arthur Lintell
+44 20 7313 9112
arthur.lintell@knightfrank.com

Knight Frank Notting Hill
294 Westbourne Grove
London, W11 2PS

knightfrank.co.uk

Your partners in property

1. Particulars: These particulars are not an offer or contract, nor part of one. You should not rely on statements given by Knight Frank in the particulars, by word of mouth or in writing ("information") as being factually accurate about the property, its condition or its value. Neither Knight Frank nor any joint agent has any authority to make any representations about the property, and accordingly any information given is entirely without responsibility on the part of Knight Frank. 2. Material Information: Please note that the material information is provided to Knight Frank by third parties and is provided here as a guide only. While Knight Frank has taken steps to verify this information, we advise you to confirm the details of any such material information prior to any offer being submitted. If we are informed of changes to this information by the seller or another third party, we will use reasonable endeavours to update this as soon as practical. 3. Photos, Videos etc: The photographs, property videos and virtual viewings etc. show only certain parts of the property as they appeared at the time they were taken. Areas, measurements and distances given are approximate only. 4. Regulations etc: Any reference to alterations to, or use of, any part of the property does not mean that any necessary planning, building regulations or other consent has been obtained. A buyer must find out by inspection or in other ways that these matters have been properly dealt with and that all information is correct. 5. Fixtures and fittings: A list of the fitted carpets, curtains, light fittings and other items fixed to the property which are included in the sale (or may be available by separate negotiation) will be provided by the Seller's Solicitors. 6. VAT: The VAT position relating to the property may change without notice. 7. To find out how we process Personal Data, please refer to our Group Privacy Statement and other notices at <https://www.knightfrank.com/legals/privacy-statement>.

Particulars dated June 2025. Photographs and videos dated June 2025. All information is correct at the time of going to print. Knight Frank is the trading name of Knight Frank LLP. Knight Frank LLP is a limited liability partnership registered in England and Wales with registered number OC305934. Our registered office is at 55 Baker Street, London W1U 8AN. We use the term 'partner' to refer to a member of Knight Frank LLP, or an employee or consultant. A list of members names of Knight Frank LLP may be inspected at our registered office. If you do not want us to contact you further about our services then please contact us by either calling 020 3544 0692, email to marketing.help@knightfrank.com or post to our UK Residential Marketing Manager at our registered office (above) providing your name and address.