



Sutherland Place

NOTTING HILL W2



Computer Generated
Artistic Impression

An exciting opportunity to build an exceptional home in the prestigious Westbourne Conservation Area, close to the boutiques and world-class restaurants on Westbourne Grove.

Planning permission (case number 23/04927/FULL) has recently been granted to re-build and extend this semi-detached villa with gated off-street parking to a total square footage of approximately 3,158 sq ft.

Behind the retained façade, the build will combine a fusion of contemporary and classic design features. It will seamlessly integrate a wide floor plate of approximately 7m with cutting-edge architectural elements creating exceptional volume that beautifully merges the old with the new.



Computer Generated
Artistic Impression



Computer Generated
Artistic Impression

Accommodation

Upon entry at the raised ground floor, a grand hallway will set the tone, offering a captivating vista of the double-height glass structure, and framing the landscaped garden at the rear. Descending the cantilevered staircase you will be led into a large kitchen and a double-height dining space, which is the major focal point boasting a large glass façade extending to approximately 6m (19') in height and transitioning step-free to a spacious rear garden.

The lower level will unfold into a spacious family area, a creative office space, and a beautiful guest bedroom suite.

A large principal bedroom suite spans the raised ground floor, featuring lofty ceilings throughout where full-height windows flood this generous bedroom with natural light. A sizeable en-suite principal bathroom at the rear completes this floor plate.

Furthermore, there will be two additional generous bedrooms on the first floor, complemented by a study/ single bedroom and a large family bathroom. There will also be access to a wonderful west-facing flat roof which provides an outdoor kitchen, open-air seating and a superb entertaining space.

Adding to its appeal, this new build opportunity qualifies for VAT relief and if offered with: a comprehensive tech pack available from Fabrik Architects; encompassing architectural development; engineering drawings; basement impact assessment; M&E strategy; fire safety compliance; insulation specifications; and a thorough planning pack inclusive of light spill, acoustic, arboriculture, and sustainability reports.



Computer Generated
Artistic Impression

Existing layout

Tenure
Freehold

Price
£5,000,000

Local Authority
City of Westminster

Council Tax
Band H

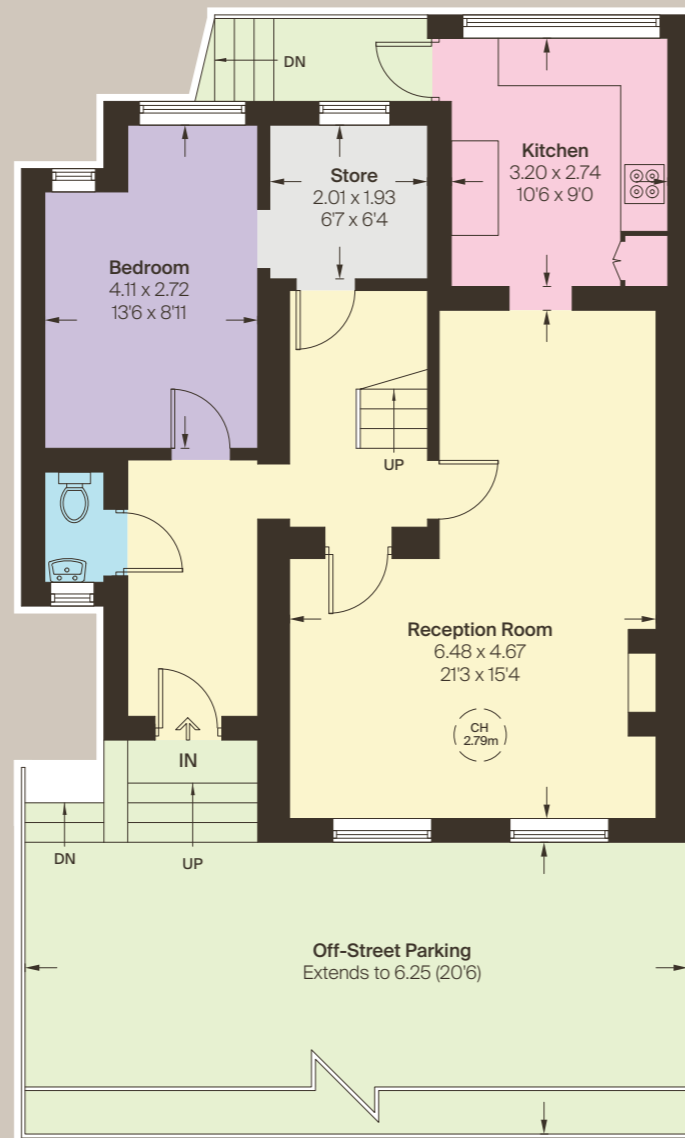
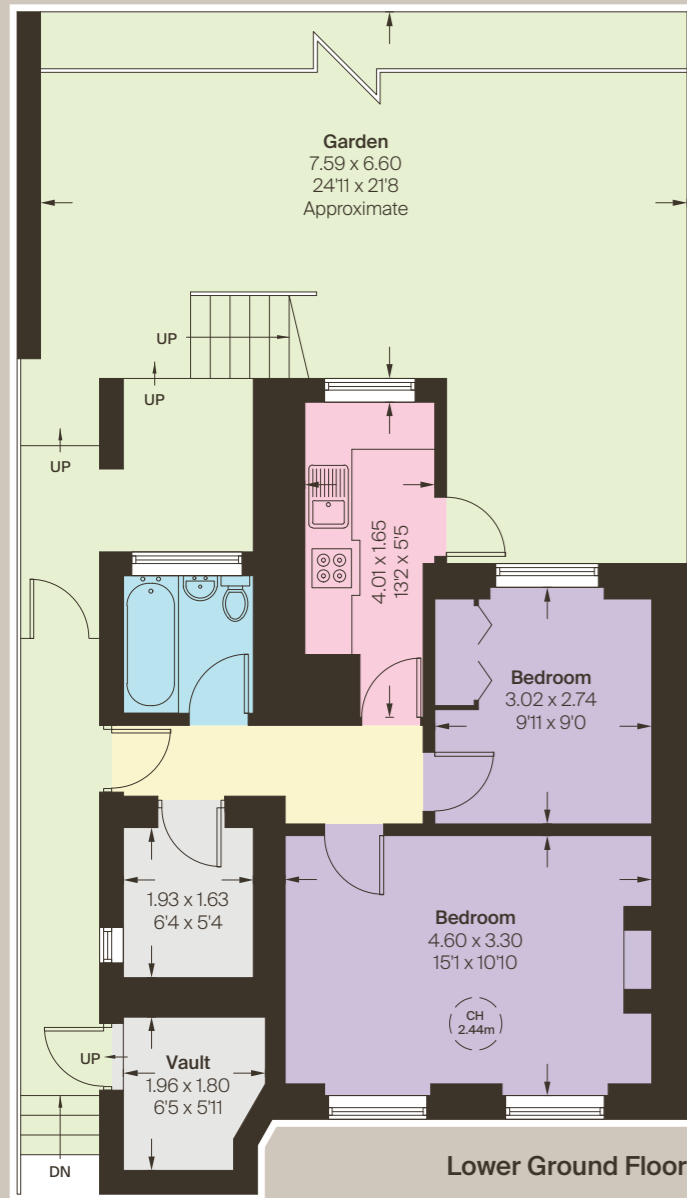
EPC
Rating F

Approximate Gross Internal Area

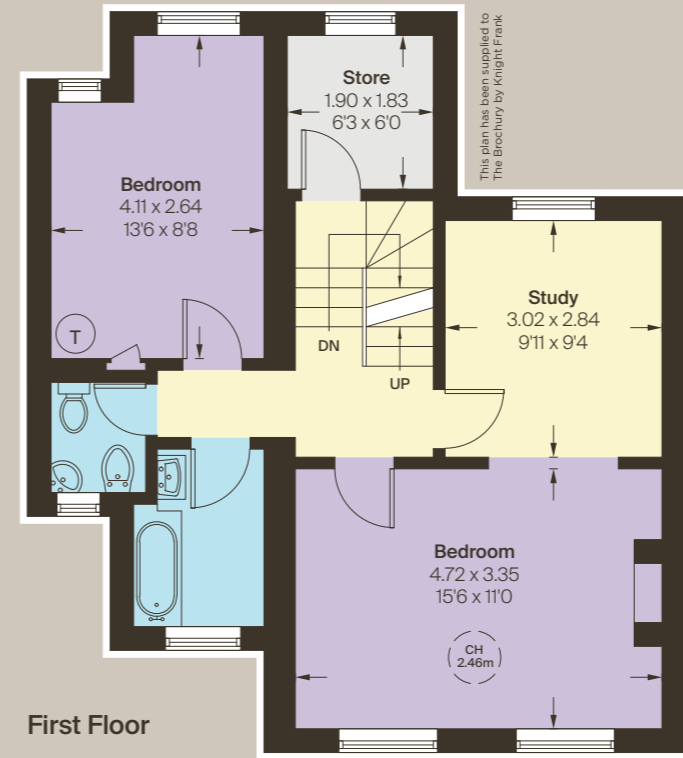
1,911 sq ft / 177.5 sq m

including limited use area
5 sq ft / 0.5 sq m

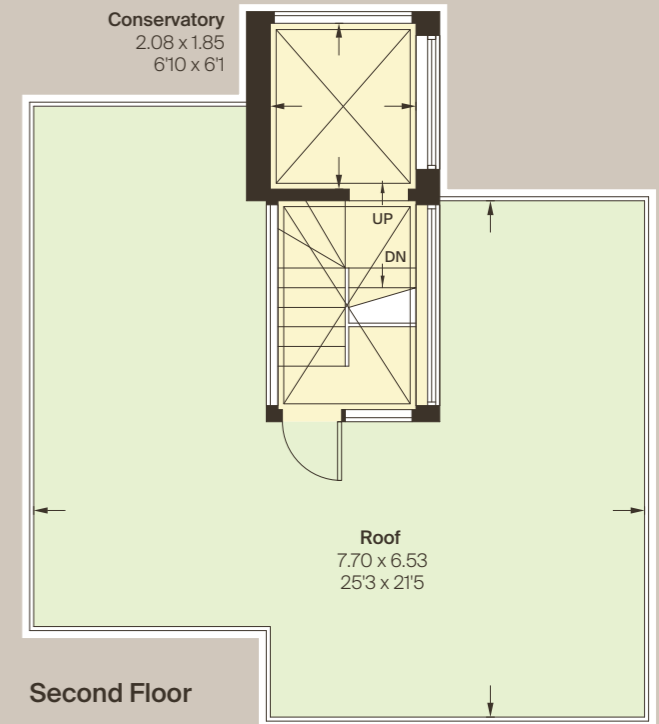
This plan is for guidance only and must not be relied upon as a statement of fact. Attention is drawn to the important notice on the last page of the text of the Particulars.



Raised Ground Floor



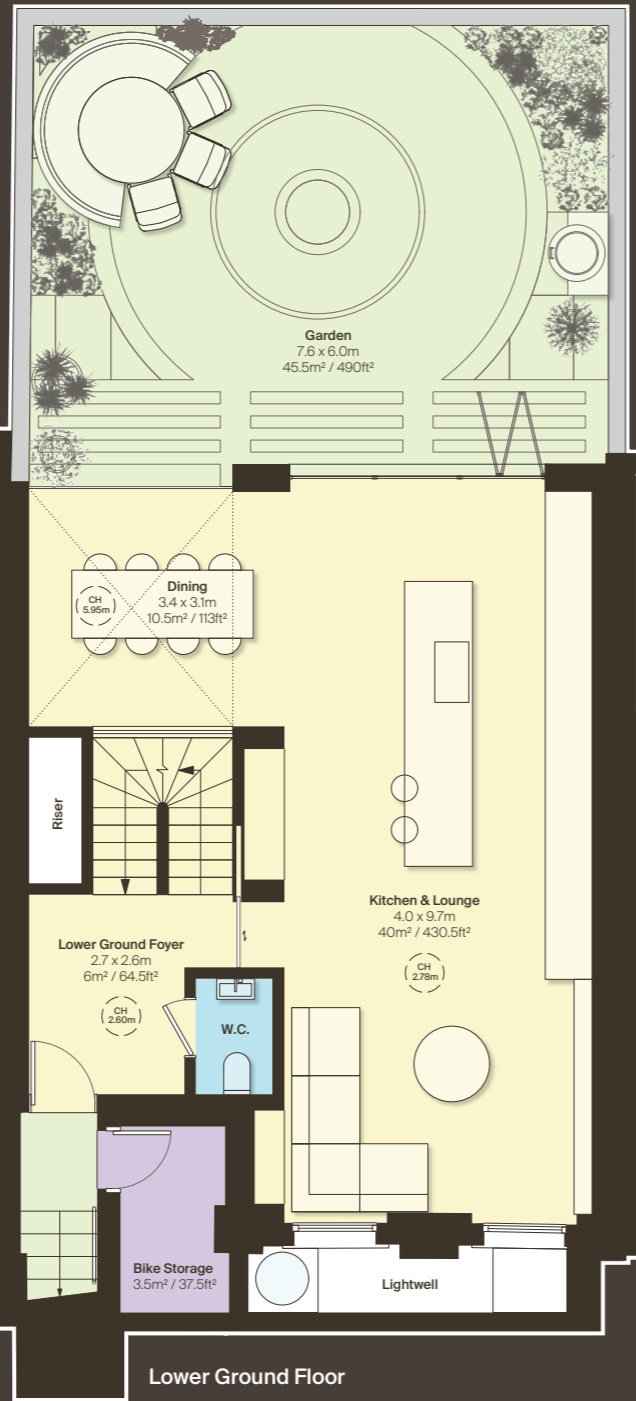
First Floor



Second Floor

Consented plans

This plan has been supplied to The Brochub by Knight Frank



Basement Floor

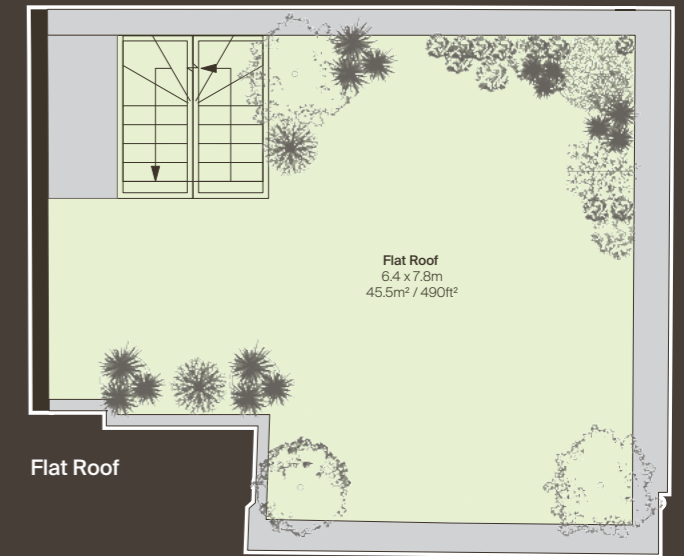
Planned Approximate Gross Internal Area
3,121 sq ft / 290 sq m

Planned Bike Store
37sq ft / 3.4 sq m

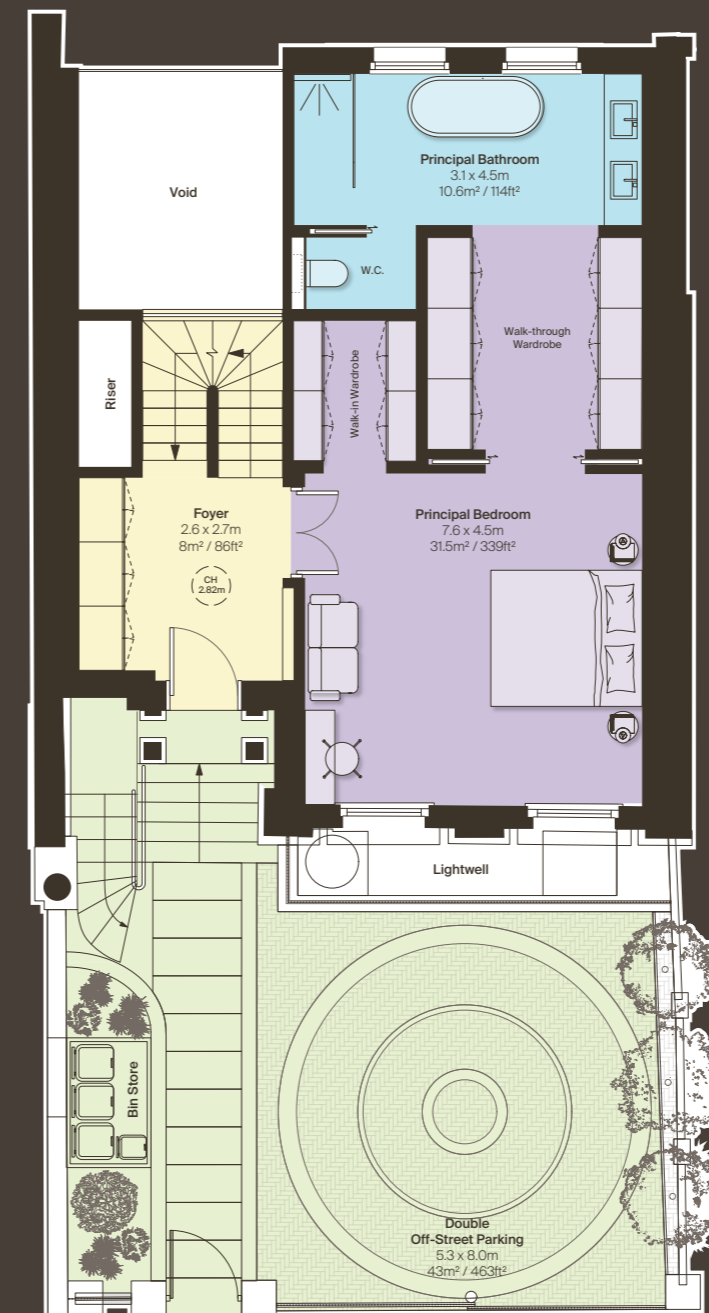
Planned Total Approximate Gross Internal Area
3,158 sq ft / 293.4 sq m



This plan is for guidance only and must not be relied upon as a statement of fact. Attention is drawn to the important notice on the last page of the text of the Particulars.



Flat Roof



Upper Ground Floor



First Floor



Flat roof with access
Furnishings subject to
planning permission
Computer Generated
Artistic Impression



Knight Frank
Notting Hill
294 Westbourne Grove
London
W11 2PS
[knightfrank.co.uk](https://www.knightfrank.co.uk)

Shaun Terry
020 7871 5064
shaun.terry@knightfrank.com

Your partners in property



Fixtures and fittings: A list of the fitted carpets, curtains, light fittings and other items fixed to the property which are included in the sale (or may be available by separate negotiation) will be provided by the Seller's Solicitors.

Important Notice: 1. Particulars: These particulars are not an offer or contract, nor part of one. You should not rely on statements by Knight Frank LLP in the particulars or by word of mouth or in writing ("information") as being factually accurate about the property, its condition or its value. Neither Knight Frank LLP nor any joint agent has any authority to make any representations about the property, and accordingly any information given is entirely without responsibility on the part of the agents, seller(s) or lessor(s). 2. Photos, Videos etc: The photographs, property videos and virtual viewings etc. show only certain parts of the property as they appeared at the time they were taken. Areas, measurements and distances given are approximate only. 3. Regulations etc: Any reference to alterations to, or use of, any part of the property does not mean that any necessary planning, building regulations or other consent has been obtained. A buyer or lessee must find out by inspection or in other ways that these matters have been properly dealt with and that all information is correct. 4. VAT: The VAT position relating to the property may change without notice. 5. To find out how we process Personal Data, please refer to our Group Privacy Statement and other notices at <https://www.knightfrank.com/legals/privacy-statement>.

Particulars dated December 2023. Photographs and videos dated December 2023.

All information is correct at the time of going to print. Knight Frank is the trading name of Knight Frank LLP. Knight Frank LLP is a limited liability partnership registered in England and Wales with registered number OC305934. Our registered office is at 55 Baker Street, London W1U 8AN. We use the term "partner" to refer to a member of Knight Frank LLP, or an employee or consultant. A list of members names of Knight Frank LLP may be inspected at our registered office. If you do not want us to contact you further about our services then please contact us by either calling 020 3544 0692, email to marketing.help@knightfrank.com or post to our UK Residential Marketing Manager at our registered office (above) providing your name and address.
09/05/24 KF-231221C-06-GG

