



Blenheim Crescent, Notting Hill W11



Blenheim Crescent, Notting Hill **W11**

This stunning apartment offers a spacious open plan kitchen and reception room, designed to accommodate both dining and entertainment. With a gas fireplace and integrated Sonos speakers in the ceiling. The apartment benefits from a delightful terrace on the second floor, as well as a generous roof terrace, ideal for entertaining during the warmer months. The bedrooms are thoughtfully proportioned, featuring built-in wardrobes and en suite shower rooms. Throughout the apartment, you'll find elegant wooden floors and underfloor heating, adding a touch of luxury and comfort. Located on the coveted Blenheim Crescent, within the enchanting terraces of Notting Hill.

•We have been unable to obtain the service charge and ground rent. You will need to make your own enquires



Guide price: £2,000,000

Tenure: Share of freehold, approximately 946 years remaining

Local authority: Royal Borough of Kensington and Chelsea

Council tax band: Unknown

Location Description

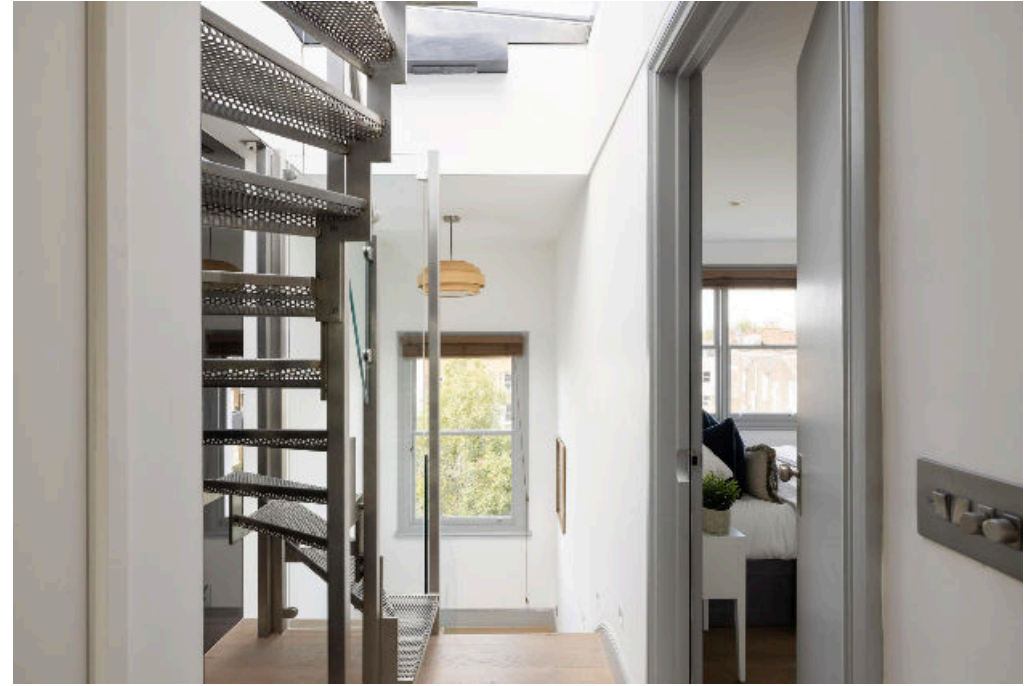
Positioned to the west of Ladbrooke Grove, the apartment is closeby to the Hammersmith and City and Circle Lines Underground stations, ensuring easy commutes.

In close proximity, you'll discover the renowned Portobello Road market and Holland Park, offering a wealth of entertainment, leisure, and retail options. Ladbrooke Grove also provides convenient bus connections to Paddington, the West End, Shepherds Bush, and Victoria.

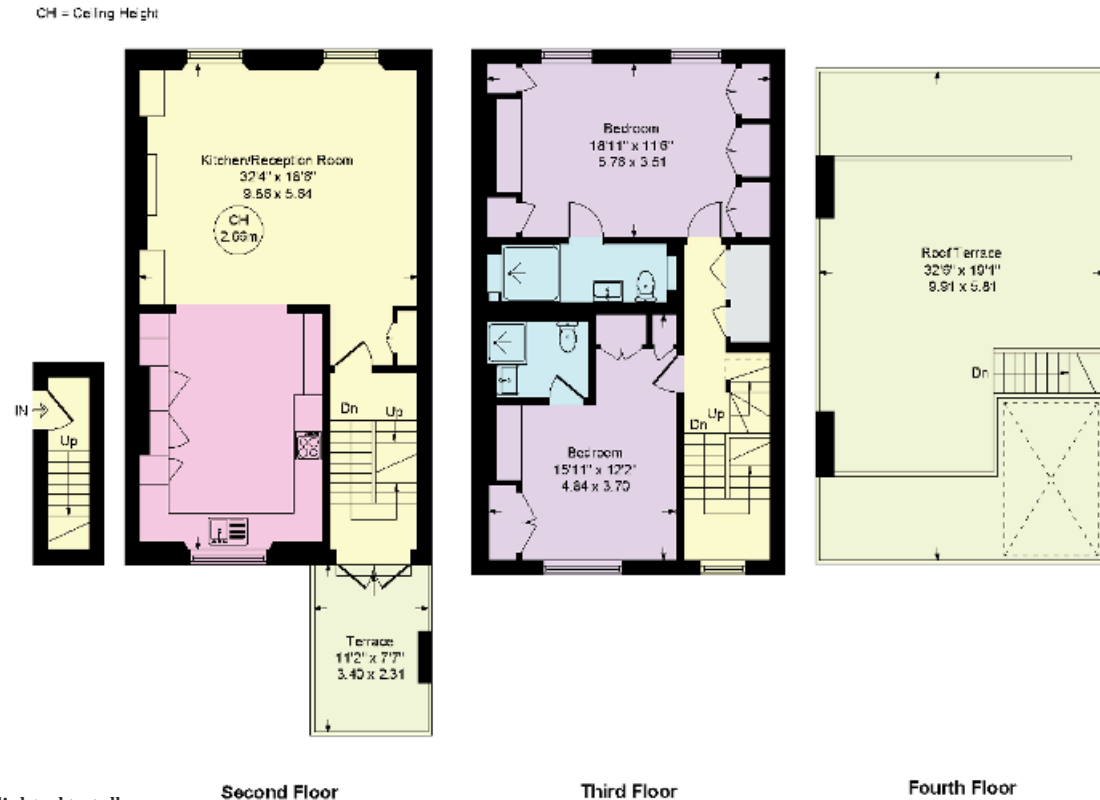








Blenheim Crescent, Notting Hill W11



**Approximate Gross Internal Floor Area:
114.81 sq m / 1214 sq ft**

This plan is for guidance only and must not be relied upon as a statement of fact. Attention is drawn to the important notice on the last page of the text of the Particulars.

Knight Frank
Notting Hill Sales
 294 Westbourne Grove
 London W11 2PS

We would be delighted to tell you more

Jack Thomas
 020 3910 9732
jack.thomas@knightfrank.com



Fixtures and fittings: A list of the fitted carpets, curtains, light fittings and other items fixed to the property which are included in the sale (or may be available by separate negotiation) will be provided by the Seller's Solicitors.

Important Notice: 1. Particulars: These particulars are not an offer or contract, nor part of one. You should not rely on statements by Knight Frank LLP in the particulars or by word of mouth or in writing ("information") as being factually accurate about the property, its condition or its value. Neither Knight Frank LLP nor any joint agent has any authority to make any representations about the property, and accordingly any information given is entirely without responsibility on the part of the agents, seller(s) or lessor(s). 2. Photos, Videos etc: The photographs, property videos and virtual viewings etc. show only certain parts of the property as they appeared at the time they were taken. Areas, measurements and distances given are approximate only. 3. Regulations etc: Any reference to alterations to, or use of, any part of the property does not mean that any necessary planning, building regulations or other consent has been obtained. A buyer or lessee must find out by inspection or in other ways that these matters have been properly dealt with and that all information is correct. 4. VAT: The VAT position relating to the property may change without notice. 5. To find out how we process Personal Data, please refer to our Group Privacy Statement and other notices at <https://www.knightfrank.com/legals/privacy-statement>. Particulars dated June 2023. Photographs and videos dated June 2023.

Knight Frank is the trading name of Knight Frank LLP. Knight Frank LLP is a limited liability partnership registered in England and Wales with registered number OC305934. Our registered office is at 55 Baker Street, London W1U 8AN where you may look at a list of members' names. If we use the term 'partner' when referring to one of our representatives, that person will either be a member, employee, worker or consultant of Knight Frank LLP and not a partner in a partnership. If you do not want us to contact you further about our services then please contact us by either calling 020 3544 0692, email to marketing.help@knightfrank.com or post to our UK Residential Marketing Manager at our registered office (above) providing your name and address.