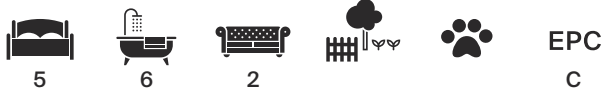




Kingsbridge Road, Notting Hill **W10**

Kingsbridge Road, Notting Hill W10

A wonderful example of an Edwardian semi-detached house on this prestigious street in the St Quintin Conservation area. This five-bedroom house has been extended to over 3500sqft and offers everything you could ask for in a family home. The ground floor features a vast, wide kitchen/ reception room leading to a south facing 67ft rear garden ideal for entertaining, and a separate sitting room at the front of the property. The lower ground has been cleverly designed and has a large guest bedroom with en-suite bathroom, a utility room, and a large play room. The upper floors feature four bedrooms and four bathrooms including the principle suite on the first floor with walk in wardrobe leading through to an en-suite bathroom.



Guide price: £4,250,000

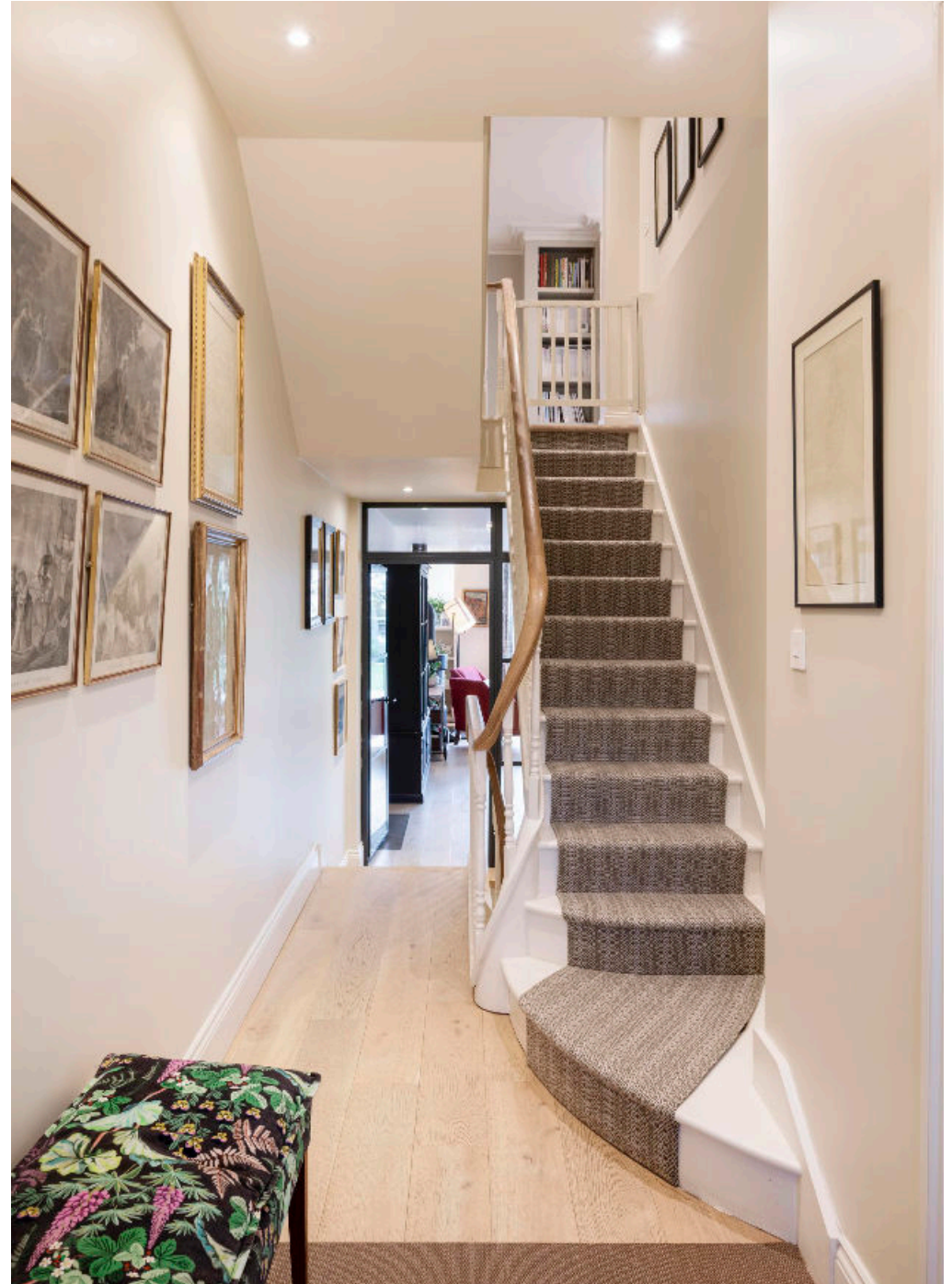
Tenure: Available freehold

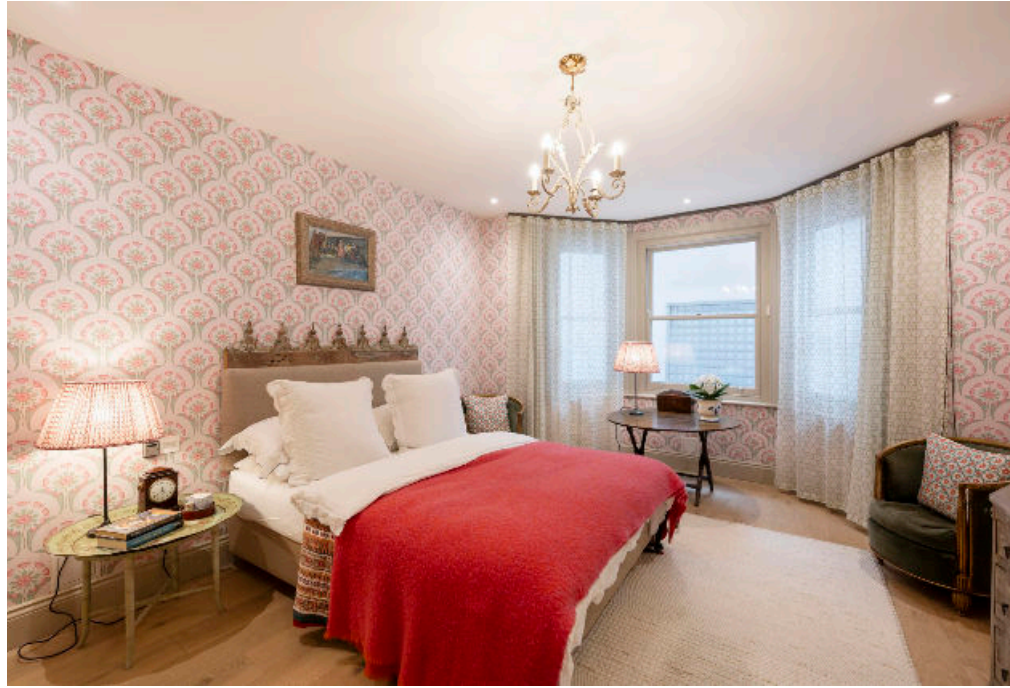
Local authority: Royal Borough of Kensington and Chelsea

Council tax band: G













Kingsbridge Road, Notting Hill W10



**Approximate Gross Internal Floor Area
331 sq m / 3563 sq ft**

This plan is for guidance only and must not be relied upon as a statement of fact. Attention is drawn to the important notice on the last page of the text of the Particulars.

Knight Frank
Notting Hill
294 Westbourne Grove
London W11 2PS

We would be delighted to tell you more

Jack Thomas
020 3910 9732
jack.thomas@knightfrank.com



Fixtures and fittings: A list of the fitted carpets, curtains, light fittings and other items fixed to the property which are included in the sale (or may be available by separate negotiation) will be provided by the Seller's Solicitors.
Important Notice: 1. Particulars: These particulars are not an offer or contract, nor part of one. You should not rely on statements by Knight Frank LLP in the particulars or by word of mouth or in writing ("information") as being factually accurate about the property, its condition or its value. Neither Knight Frank LLP nor any joint agent has any authority to make any representations about the property, and accordingly any information given is entirely without responsibility on the part of the agents, seller(s) or lessor(s). 2. Photos, Videos etc: The photographs, property videos and virtual viewings etc. show only certain parts of the property as they appeared at the time they were taken. Areas, measurements and distances given are approximate only. 3. Regulations etc: Any reference to alterations to, or use of, any part of the property does not mean that any necessary planning, building regulations or other consent has been obtained. A buyer or lessee must find out by inspection or in other ways that these matters have been properly dealt with and that all information is correct. 4. VAT: The VAT position relating to the property may change without notice. 5. To find out how we process Personal Data, please refer to our Group Privacy Statement and other notices at <https://www.knightfrank.com/legals/privacy-statement>.
Particulars dated March 2024. Photographs and videos dated March 2024.

Knight Frank is the trading name of Knight Frank LLP. Knight Frank LLP is a limited liability partnership registered in England and Wales with registered number OC305934. Our registered office is at 55 Baker Street, London W1U 8AN where you may look at a list of members' names. If we use the term 'partner' when referring to one of our representatives, that person will either be a member, employee, worker or consultant of Knight Frank LLP and not a partner in a partnership. If you do not want us to contact you further about our services then please contact us by either calling 020 3544 0692, email to marketing.help@knightfrank.com or post to our UK Residential Marketing Manager at our registered office (above) providing your name and address.