



GREYBROOK HOUSE

MAYFAIR W1



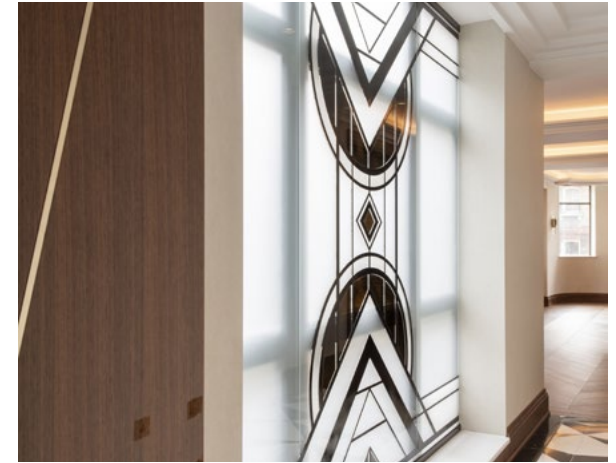
Located in the highly sought after New Bond Street quarter, this beautiful building has been designed with exceptionally high standards to offer luxurious living throughout.

Originally designed by Sir John Burnett & Partners as a piano showroom the Art Deco Grade II listed building the property is entered via central hallway with concierge desk.

The building's lift takes you up to the three apartments and the penthouse.

Further to the the apartments there is also self-contained staff quarters; comprising reception room, kitchen, bedroom and bathroom on the lower ground floor

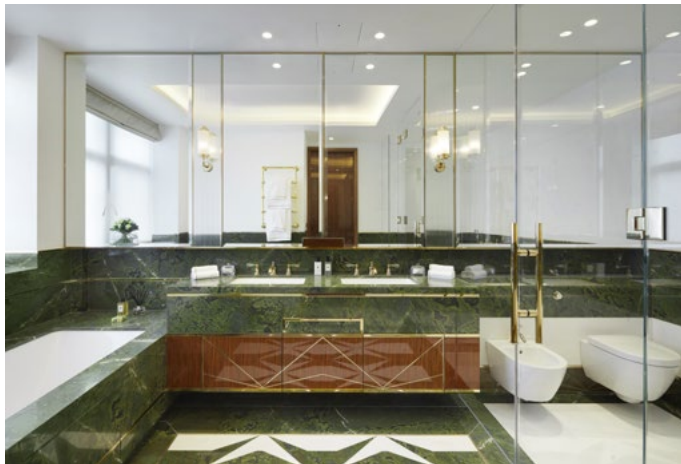
Greybrook House has been carefully and thoughtfully designed throughout; apartments feature beautiful crafted windows, bespoke cabinetry, oak flooring, Gaggenau appliances, Bulthaup kitchens and Taj Mahal marble amongst many things of this sensational Central London property.





The Apartments

The first three floors comprise of approx 2,700sq individual three bedroomed residences. Each apartment has a dual aspect living room to the front of the building with a semi open planned kitchen. To the rear are the bedrooms including Impressive master suites with dressing rooms and marble floored bathrooms. The two further bedrooms and both good sized doubles with fitted wardrobes and en suites.





The Penthouse

The five bedroomed penthouse is arranged over two floors; an incredible space, it also benefits from a private terrace off the reception room and a roof terrace with views over Central London. The master suite is located on the fourth floor to the front of the building and features fitted wardrobes, dressing room and exceptional luxury en suite bathroom. The four

further bedrooms are all very generously sized, each with fitted storage and en suites. The main living space is on the top floor (5th floor) with the reception room to the rear and the kitchen to the front, both separated by a dining space with a feature fireplace and utility room. The kitchen is a large space with lots of countertops/storage as well as high end appliances.



Location

Located in Bond Streets luxury quarter, between Savile Row, the Royal Academy of Arts and New Bond Street, Brook Street offers a truly modern interpretation of the surrounding architecture, and provides the height of luxury apartment living. The development is in easy reach of Green Park. Nearby transport includes: Piccadilly Circus, Oxford Circus and Green Park.



Terms

Tenure: Freehold

Price: On application

Local Authority: City of Westminster

Area

Approximate Gross Internal Area

14,131 sq ft / 1,312.8 sq m

Terrace

1,216 sq ft / 113 sq m

This plan is for guidance only and must not be relied upon as a statement of fact. Attention is drawn to the Important Notice on the last page of the text of the Particulars.





Knight Frank
Mayfair
120a Mount Street
London W1K 3NN
[knightfrank.co.uk](https://www.knightfrank.co.uk)

I would be delighted to tell you more.

Simon Burgoyne
020 7647 6605
simon.burgoyne@knightfrank.com



Connecting people & property, perfectly.

Fixtures and fittings: A list of the fitted carpets, curtains, light fittings and other items fixed to the property which are included in the sale (or may be available by separate negotiation) will be provided by the Seller's Solicitors.

Important Notice: 1. Particulars: These particulars are not an offer or contract, nor part of one. You should not rely on statements by Knight Frank LLP in the particulars or by word of mouth or in writing ("information") as being factually accurate about the property, its condition or its value. Neither Knight Frank LLP nor any joint agent has any authority to make any representations about the property, and accordingly any information given is entirely without responsibility on the part of the agents, seller(s) or lessor(s). 2. Photos, Videos etc: The photographs, property videos and virtual viewings etc. show only certain parts of the property as they appeared at the time they were taken. Areas, measurements and distances given are approximate only. 3. Regulations etc: Any reference to alterations to, or use of, any part of the property does not mean that any necessary planning, building regulations or other consent has been obtained. A buyer or lessee must find out by inspection or in other ways that these matters have been properly dealt with and that all information is correct. 4. VAT: The VAT position relating to the property may change without notice. 5. To find out how we process Personal Data, please refer to our Group Privacy Statement and other notices at <https://www.knightfrank.com/legals/privacy-statement>.

Particulars dated 24/09/20. Photographs and videos dated 05/09/20.

Knight Frank is the trading name of Knight Frank LLP. Knight Frank LLP is a limited liability partnership registered in England and Wales with registered number OC305934. Our registered office is at 55 Baker Street, London W1U 8AN where you may look at a list of members' names. If we use the term 'partner' when referring to one of our representatives, that person will either be a member, employee, worker or consultant of Knight Frank LLP and not a partner in a partnership. If you do not want us to contact you further about our services then please contact us by either calling 020 3544 0692, email to marketing.help@knightfrank.com or post to our UK Residential Marketing Manager at our registered office (above) providing your name and address. KF-200918-01GG-C