

FARM STREET

Mayfair





A stunning freehold townhouse
for sale with private roof terrace



Located on one of Mayfair's most sought after and picturesque streets, this superb four bedroom townhouse extends to in excess of 8,000 sq ft, and benefits from freehold and private parking. Covering a total of seven floors, the property provides the perfect backdrop for entertaining.



The property comprises four bedrooms, a dressing room, three bathrooms, two further shower rooms, two reception rooms, kitchen, swimming pool, sauna and gym, cinema room and a roof terrace that offers wonderful views over Mayfair. The property further boasts an eight person lift that accesses all floors, a garage and a study.

Refurbished in 2013 without the usual restrictions of an historic listing, this property is a prime example of contemporary living in historic Mayfair.



Farm Street is a quiet residential street just to the south of popular Mount Street and nearby the famous Mount Street Gardens. Local transport links include Green Park tube station (0.4 miles) for the Jubilee, Victoria and Piccadilly lines. All distances are approximate.

Accommodation

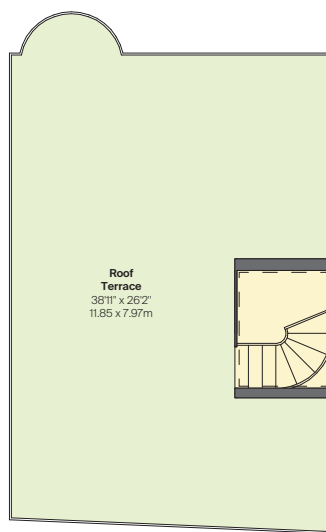
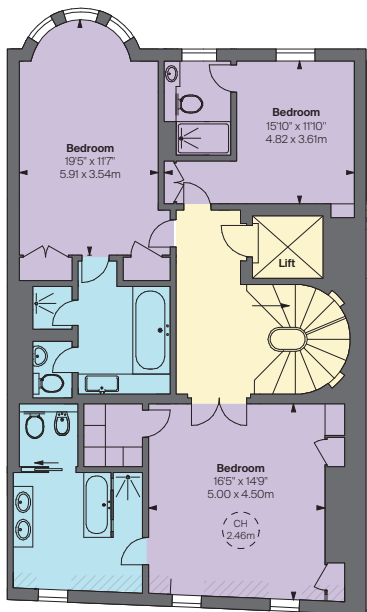
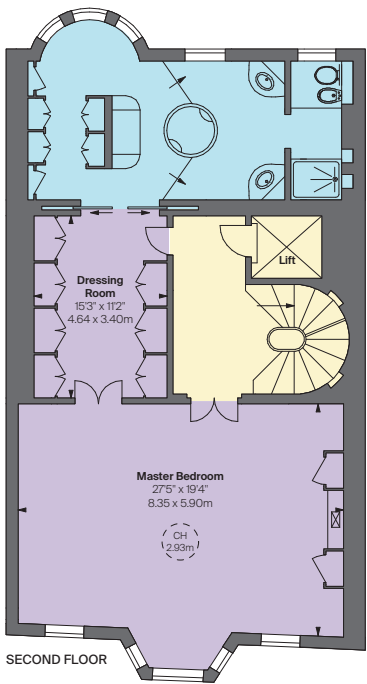
- Entrance hall
- Study
- Kitchen/breakfast room
- Lift to all floors
- Garage
- Guest cloakroom
- Elegant drawing room/ dining room
- Second floor master bedroom en suite with bathroom and dressing room

- Three further bedrooms located on the third floor
- All with en suite bathrooms
- Stunning roof terrace
- Unparalleled spa facilities including swimming pool
- Steam room
- Gym and media room.

Specification

- Air handling system
- Integrated underfloor heating
- Lutron zoned lighting with automatic sensors
- Fully integrated sound, television and cable system
- CAT 5 wiring





Tenure
Freehold

Price
On application

Local Authority
City of Westminster

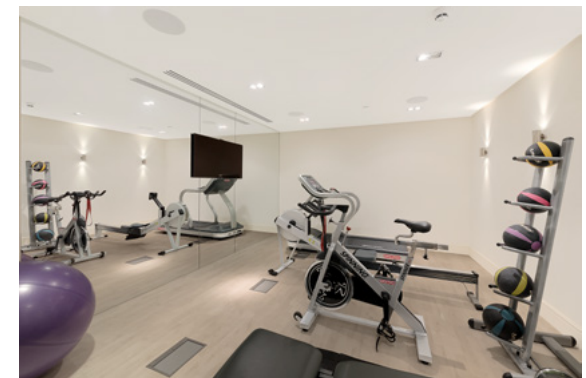
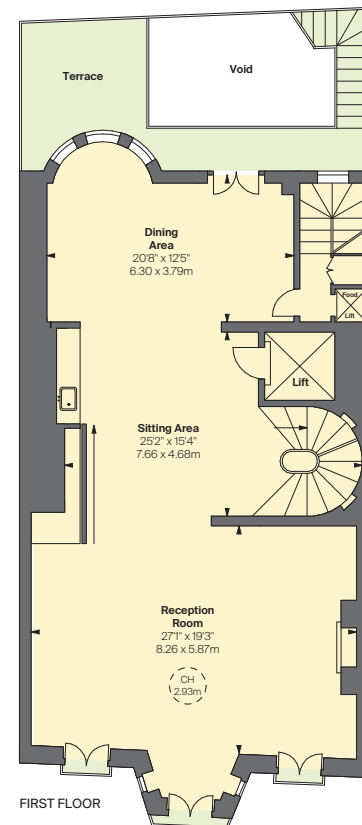
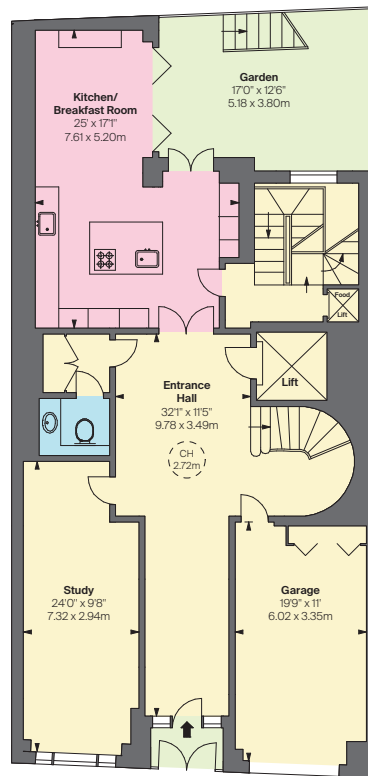
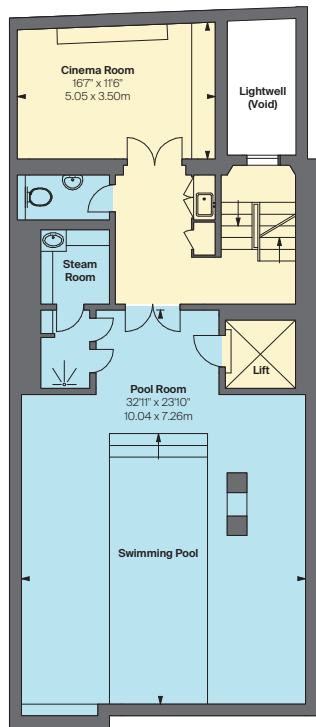
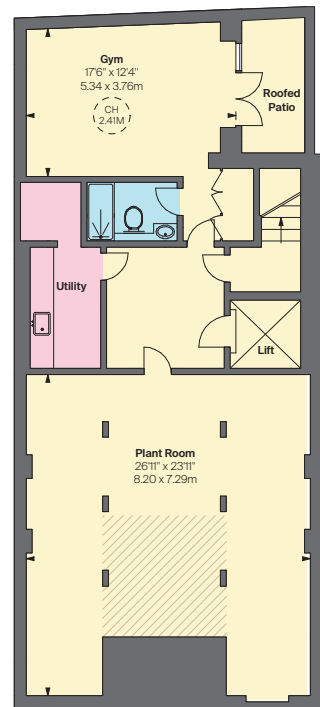
Approximate Gross Internal Area
8,001 sq ft / 743,55 sq m
including garage, roofed patio and
under 1.5m area, excluding lightwell

Roofed Patio
60 sq ft / 5.63 sq m

Under 1.5 Metre on Basement Area
105 sq ft / 9.75 sq m

Lightwell
60 sq ft / 5.63 sq m

This plan is for guidance only
and must not be relied upon as a
statement of fact. Attention is drawn
to the Important Notice on the last
page of the text of the Particulars.





THE
BROCHURE
ALEX
WINSHIP

IMPORTANT NOTICE: Knight Frank, their clients and any joint agents give notice that: 1: They are not authorised to make or give any representations or warranties in relation to the property either here or elsewhere, either on their own behalf or on behalf of their client or otherwise. They assume no responsibility for any statement that may be made in these particulars. These particulars do not form part of any offer or contract and must not be relied upon as statements or representations of fact. 2: Any areas, measurements or distances are approximate. The text, photographs and plans are for guidance only and are not necessarily comprehensive. It should not be assumed that the property has all necessary planning, building regulation or other consents and Knight Frank have not tested any services, equipment or facilities. Purchasers must satisfy themselves by inspection or otherwise. 16/06/20KF-200316B-06GG



CLIFTON
— PROPERTY PARTNERS —

020 7409 5087

 Knight
Frank

Mayfair
020 7499 1012

knightfrank.co.uk