







FAREHAM STREET

West End W1F



LUXURY LIVING WITH INCREDIBLE CITY VIEWS

A two bedroom flat in the fantastic new development, Tottenham
Court Road West.

			EPC
2	2	1	B
			

Local Authority: City of Westminster

Council Tax band: F

Tenure: Leasehold, approximately 149 years remaining

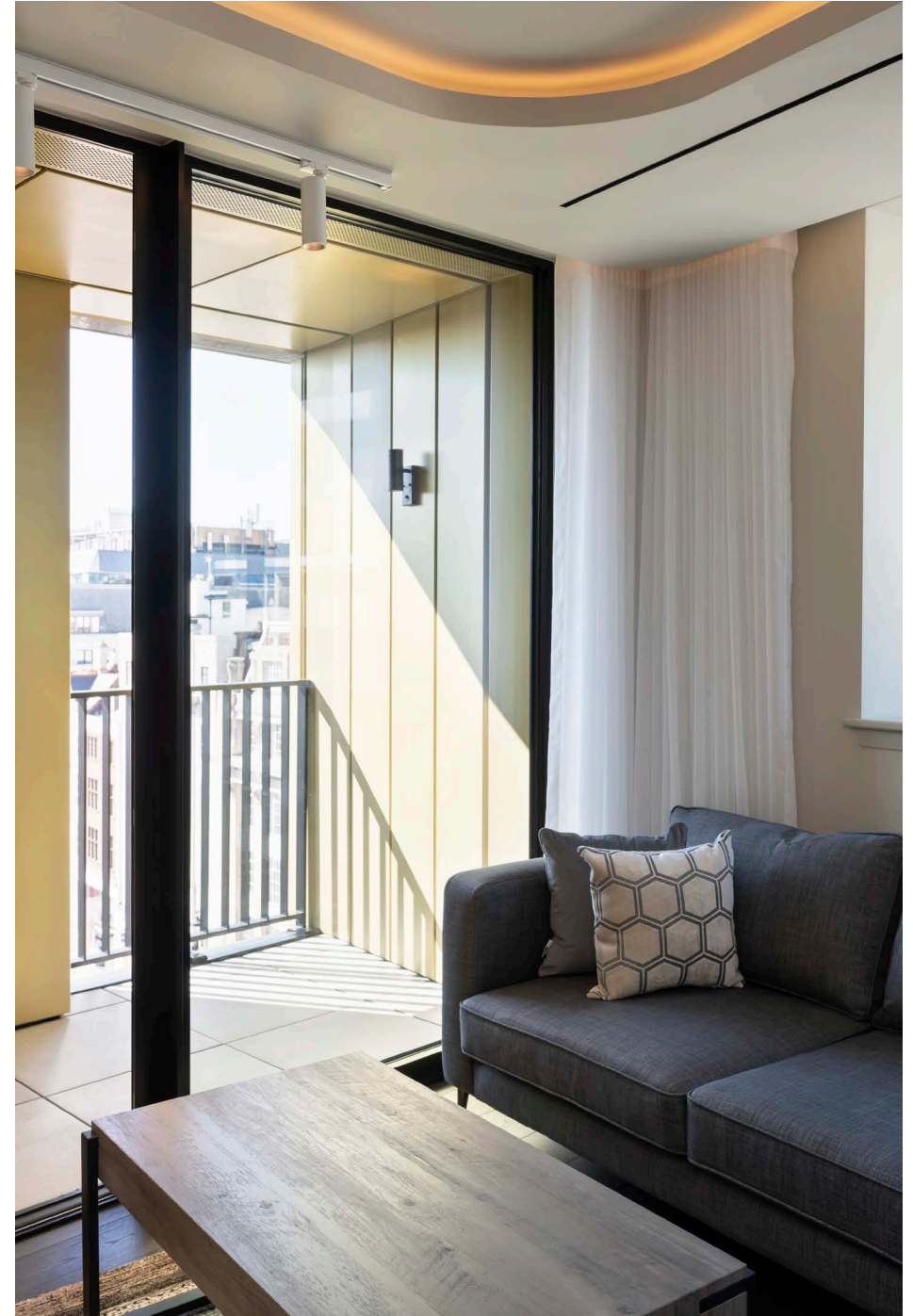
Service charges: approximately £11,017 per annum, reviewed every year, next review due 2026

Guide price: £1,980,000



FAREHAM STREET, WEST END W1F

Introducing a brand-new, exquisitely designed two-bedroom apartment with incredible views across Fitzrovia and the West End. This stylish home features two spacious double bedrooms, two contemporary bathrooms, and a bright open-plan kitchen/living area, perfect for both relaxing and entertaining. The apartment benefits from dual aspect windows which flood the space with natural light, while the south-west facing balcony offers the ideal spot to enjoy afternoon sun and city views.







ELEGANT DESIGN, EXCEPTIONAL LOCATION

Finished to an exceptional standard, the property boasts sleek wooden flooring, modern integrated appliances, a separate utility, and the comfort of air conditioning throughout. The design blends clean, modern lines with high-quality finishes, creating a luxurious yet inviting atmosphere.

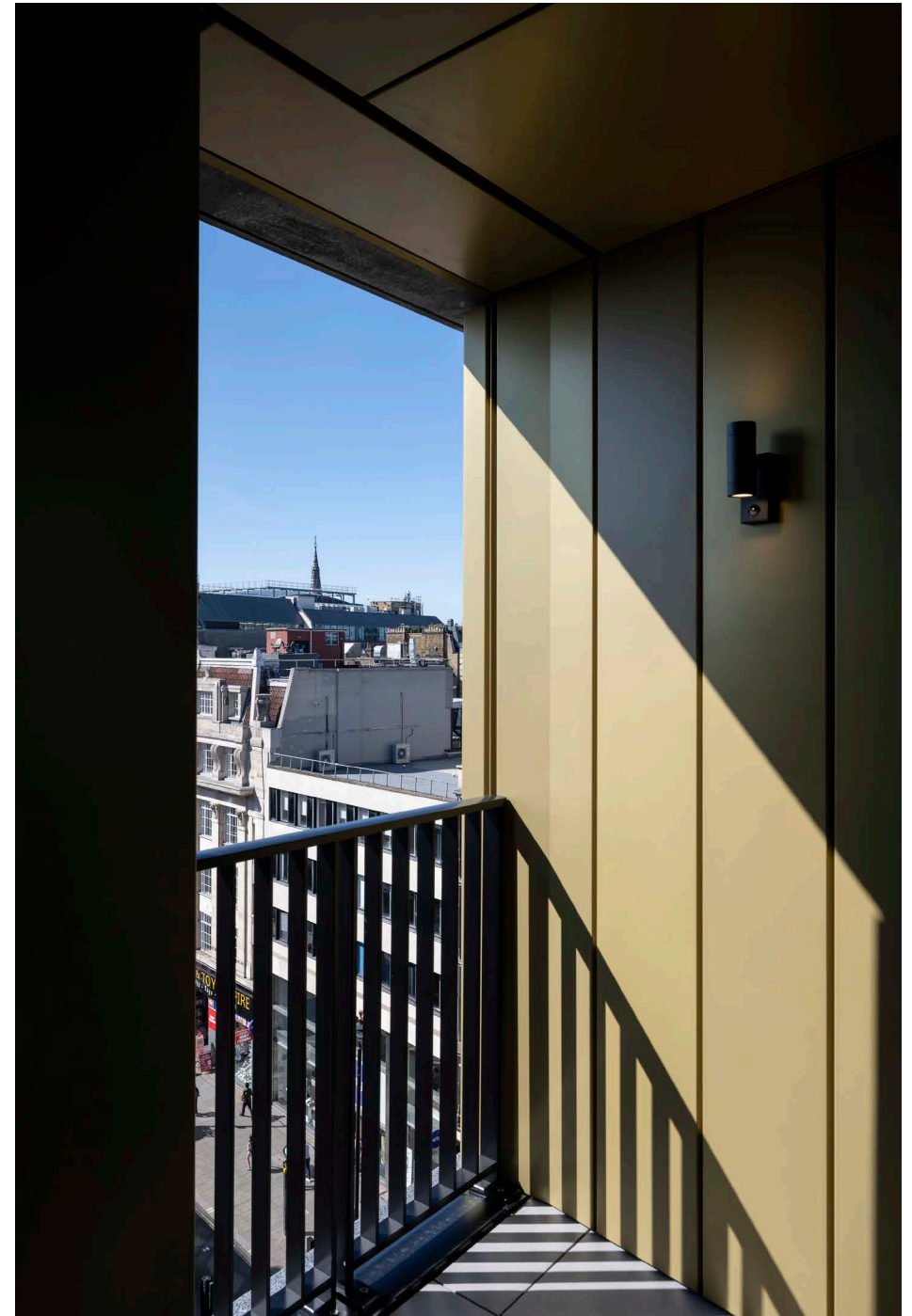
Residents benefit from a concierge, providing added convenience and security. Perfectly located for enjoying London's vibrant dining, shopping, and cultural scene, this apartment offers a rare combination of style, comfort, and location in one of the city's most desirable neighbourhoods.



THE BEST OF LONDON AT YOUR DOORSTEP

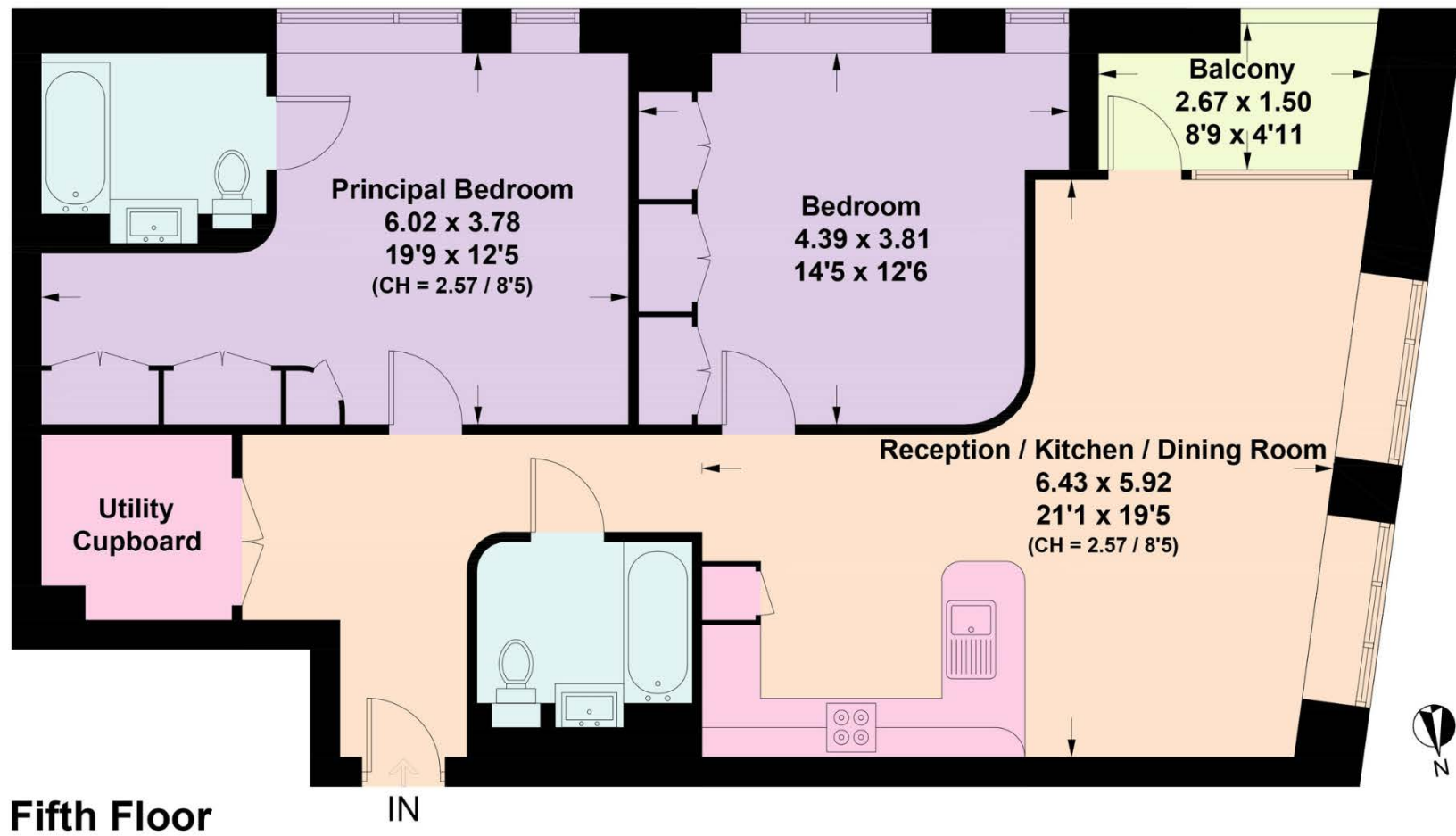
Tottenham Court Road West is not only a new landmark for luxurious living in the heart of London's West End, it is also a new focal point from which residents can take a leisurely stroll to the capital's most iconic shopping streets, fashion houses and bespoke master tailors. Tottenham Court Road West is central to all of London's landmark destinations and key transport hubs.

The development has been designed to act as an iconic marker for the new Crossrail station and a gateway into Soho itself. Internationally acclaimed interior designer Nicola Fontanella of Argent Design has been commissioned to provide the design concept and vision for Tottenham Court Road West.









Approximate Gross Internal Area = 91.0 sq m / 979 sq ft

This plan is for layout guidance only. Not drawn to scale unless stated. Windows and door openings are approximate. Whilst every care is taken in the preparation of this plan, please check all dimensions, shapes and compass bearings before making any decisions reliant upon them. (ID767266)

We would be delighted
to tell you more.

Kimberley Pratt
020 3892 3578
kimberley.pratt@knightfrank.com

Knight Frank Mayfair
44 South Audley Street
W1K 2PX

[knightfrank.co.uk](https://www.knightfrank.co.uk)

Your partners in property

1. Particulars: These particulars are not an offer or contract, nor part of one. You should not rely on statements given by Knight Frank in the particulars, by word of mouth or in writing ("information") as being factually accurate about the property, its condition or its value. Neither Knight Frank nor any joint agent has any authority to make any representations about the property, and accordingly any information given is entirely without responsibility on the part of Knight Frank. 2. Material Information: Please note that the material information is provided to Knight Frank by third parties and is provided here as a guide only. While Knight Frank has taken steps to verify this information, we advise you to confirm the details of any such material information prior to any offer being submitted. If we are informed of changes to this information by the seller or another third party, we will use reasonable endeavours to update this as soon as practical. 3. Photos, Videos etc: The photographs, property videos and virtual viewings etc. show only certain parts of the property as they appeared at the time they were taken. Areas, measurements and distances given are approximate only. 4. Regulations etc: Any reference to alterations to, or use of, any part of the property does not mean that any necessary planning, building regulations or other consent has been obtained. A buyer must find out by inspection or in other ways that these matters have been properly dealt with and that all information is correct. 5. Fixtures and fittings: A list of the fitted carpets, curtains, light fittings and other items fixed to the property which are included in the sale (or may be available by separate negotiation) will be provided by the Seller's Solicitors. 6. VAT: The VAT position relating to the property may change without notice. 7. To find out how we process Personal Data, please refer to our Group Privacy Statement and other notices at <https://www.knightfrank.com/legals/privacy-statement>.

Particulars dated August 2025. Photographs and videos dated August 2025. All information is correct at the time of going to print. Knight Frank is the trading name of Knight Frank LLP. Knight Frank LLP is a limited liability partnership registered in England and Wales with registered number OC305934. Our registered office is at 55 Baker Street, London W1U 8AN. We use the term 'partner' to refer to a member of Knight Frank LLP, or an employee or consultant. A list of members names of Knight Frank LLP may be inspected at our registered office. If you do not want us to contact you further about our services then please contact us by either calling 020 3544 0692, email to marketing.help@knightfrank.com or post to our UK Residential Marketing Manager at our registered office (above) providing your name and address.