

# Half Moon Street

MAYFAIR W1





An exceptional townhouse with cinema, lift and outside space in the heart of Mayfair.



## Half Moon Street

Immaculately refurbished to the highest standard, this Grade II listed white stucco fronted house seamlessly blends contemporary design and period detail. The exceptional residence, with accommodation spanning across four floors, provides the perfect space for entertaining. The property benefits from generous entertainment rooms throughout, including an impressive cinema room, a large east-facing roof terrace contributing to the house's spacious feel, a passenger lift to all floors, as well as extensive leisure facilities including a steam room and a gym. There is a large and luxurious principal bedroom with en suite bathroom which also benefits from an impressive dressing area with extensive wardrobe space. The second guest bedroom similarly features a spacious guest dressing area with en suite bathroom. There are two additional bedrooms, both with en suites, on the fourth and fifth floors of the property. A vault can be found on the lower ground floor, offering further storage.









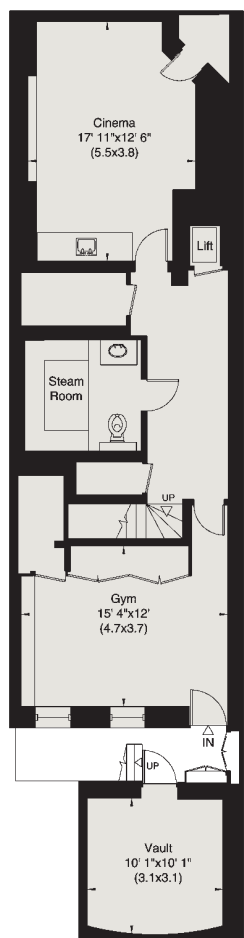




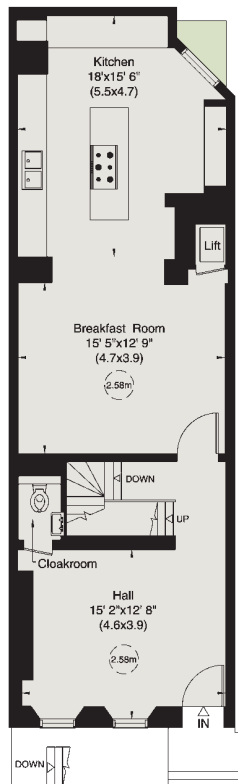




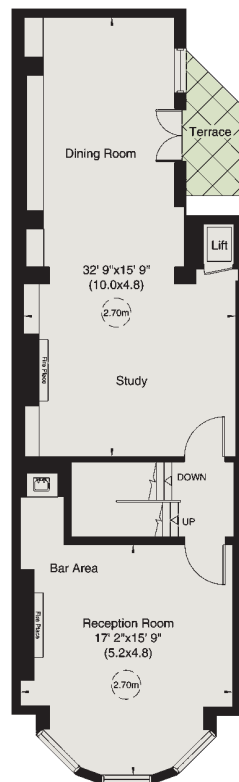




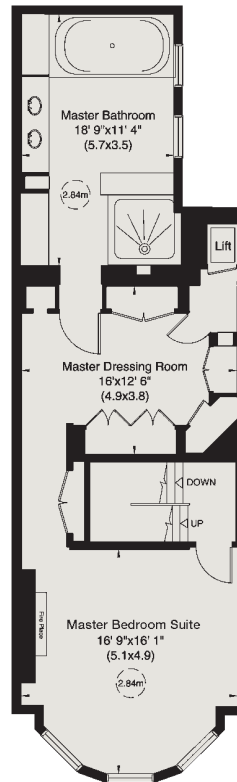
Lower Ground Floor



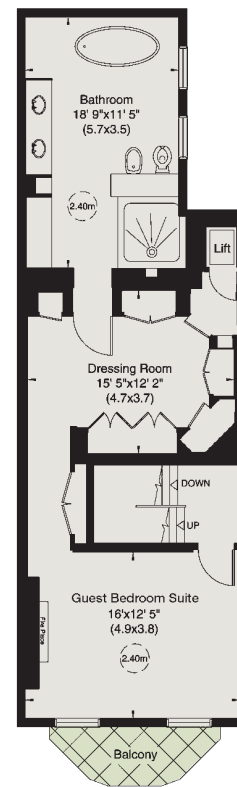
Ground Floor



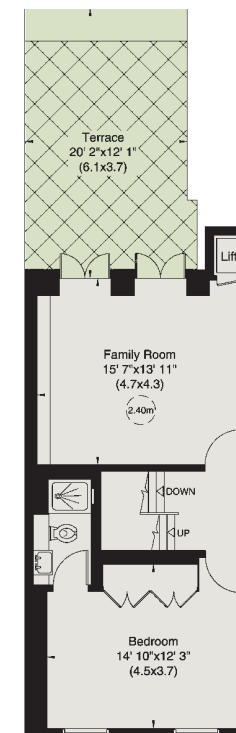
First Floor



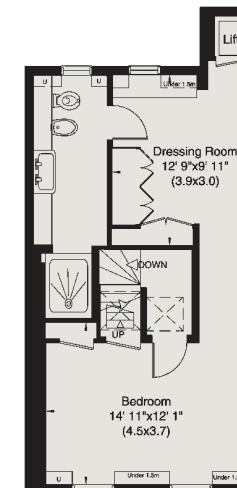
Second Floor



Third Floor



Fourth Floor



Fifth Floor



**Gross Internal Floor Area**

466 sq m / 5017 sq ft  
(Including Under 1.5m and Vault)

**Outside Area**

87 sq m / 936 sq ft

**Guide price**

£12,500,000

**Tenure**

Freehold

**EPC rating**

C

**Local Authority**

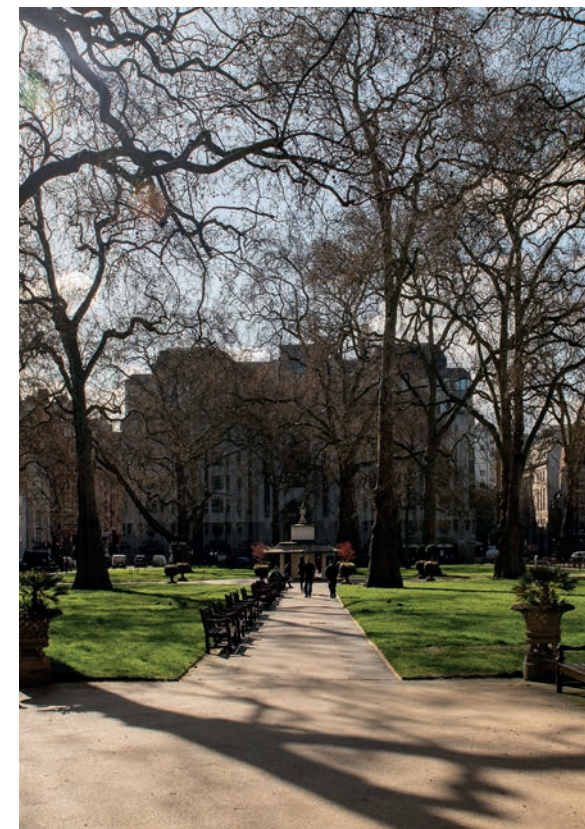
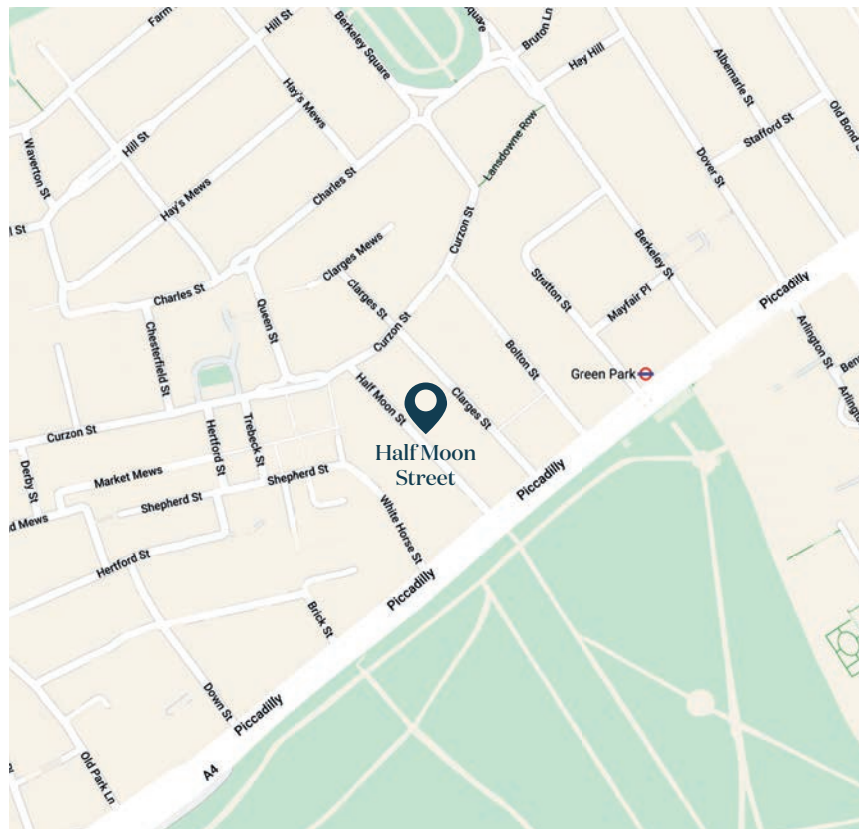
City of Westminster

**Council Tax Band**

H

## Location

Running from Curzon Street in the north and Piccadilly in the south, Half Moon Street is situated in the heart of vibrant Shepherd's Market. The street is famed for its literary history - it is where the fictional character, Wooster and his valet, Jeeves of P.G. Wodehouse's novels lived, and where in 1763 James Boswell wrote his infamous diary. The West End, with Mayfair at the very heart, is ranked number one globally for international flagship designer stores, with a world class mix of over 600 shops, 40 renowned theatres, 30 museums and galleries, 17 Michelin star restaurants and 7 green spaces, including Green Park, which is found directly at the end of Half Moon Street. The property offers easy access to Bond Street, known as Europe's premier retailing destination and offering the most exclusive and prestigious brands. Local transport links include Green Park tube station (approximately 0.2 miles) for the Jubilee, Victoria and Piccadilly lines.





**Knight Frank**  
120a Mount Street  
Mayfair  
London  
W1K 3NN  
[knightfrank.co.uk](https://www.knightfrank.co.uk)

**Jonathan Fieldman**  
07971060538  
[jonathan.fieldman@knightfrank.com](mailto:jonathan.fieldman@knightfrank.com)

Your partners in property



Fixtures and fittings: A list of the fitted carpets, curtains, light fittings and other items fixed to the property which are included in the sale (or may be available by separate negotiation) will be provided by the Seller's Solicitors.  
Important Notice: 1. Particulars: These particulars are not an offer or contract, nor part of one. You should not rely on statements by Knight Frank LLP in the particulars or by word of mouth or in writing ("information") as being factually accurate about the property, its condition or its value. Neither Knight Frank LLP nor any joint agent has any authority to make any representations about the property, and accordingly any information given is entirely without responsibility on the part of the agents, seller(s) or lessor(s). 2. Photos, Videos etc: The photographs, property videos and virtual viewings etc. show only certain parts of the property as they appeared at the time they were taken. Areas, measurements and distances given are approximate only. 3. Regulations etc: Any reference to alterations to, or use of, any part of the property does not mean that any necessary planning, building regulations or other consent has been obtained. A buyer or lessee must find out by inspection or in other ways that these matters have been properly dealt with and that all information is correct. 4. VAT: The VAT position relating to the property may change without notice. 5. To find out how we process Personal Data, please refer to our Group Privacy Statement and other notices at <https://www.knightfrank.com/legal/privacy-statement>.  
Particulars dated January 2024. Photographs and videos dated January 2024.  
All information is correct at the time of going to print. Knight Frank is the trading name of Knight Frank LLP. Knight Frank LLP is a limited liability partnership registered in England and Wales with registered number OC305034. Our registered office is at 55 Baker Street, London W1U 8AN. We use the term 'partner' to refer to a member of Knight Frank LLP, or an employee or consultant.  
A list of members names of Knight Frank LLP may be inspected at our registered office. If you do not want us to contact you further about our services then please contact us by either calling 020 3544 0692, email to [marketing.help@knightfrank.com](mailto:marketing.help@knightfrank.com) or post to our UK Residential Marketing Manager at our registered office (above) providing your name and address.  
02/08/24 KF-24029-07GG



[knightfrank.co.uk](http://knightfrank.co.uk)