

The Penthouse at The Walpole Mayfair

ST JAMES SW1





**The Penthouse
of the Walpole
Mayfair offers
expansive living
and entertaining
space with lavish
interiors and
breathtaking
views over the city
from a private
roof terrace.**





The stunning penthouse apartment extends over the top three floors of this historic period conversion, once occupied by Prime Minister Sir Robert Walpole. It is adjacent to the world famous Ritz hotel which offers valet parking. If entered on the fifth floor, one is greeted by the elegant lobby, basking in natural light. A bespoke floating marble staircase sweeps around a glistening Swarovski Crystal Light that cascades down from the double height ceiling.



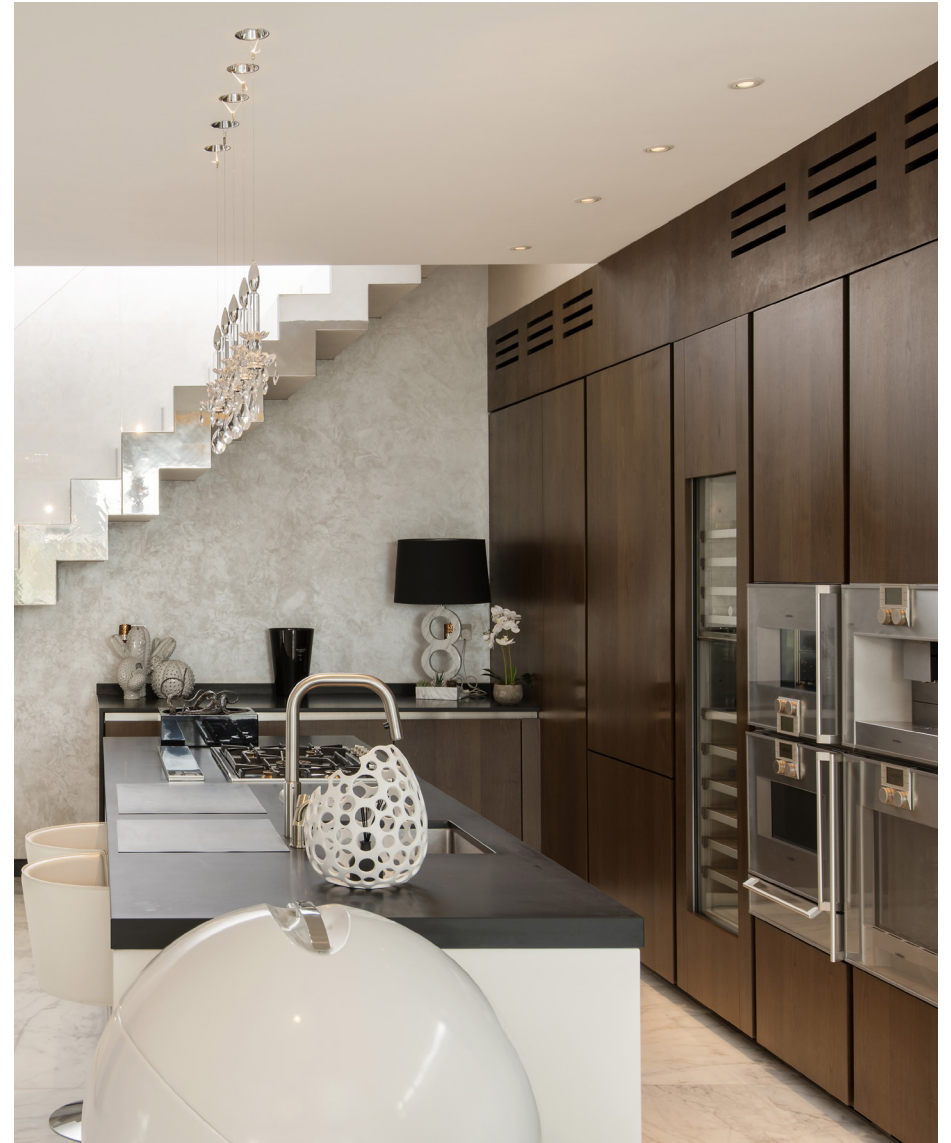
Unique to this beautiful property, there is an option to enter the apartment on the sixth floor from the personal secure lift. As the lift doors open, one is met by the extravagantly spacious living and entertaining space, with floor to ceiling windows and doors flooding the room with natural light.

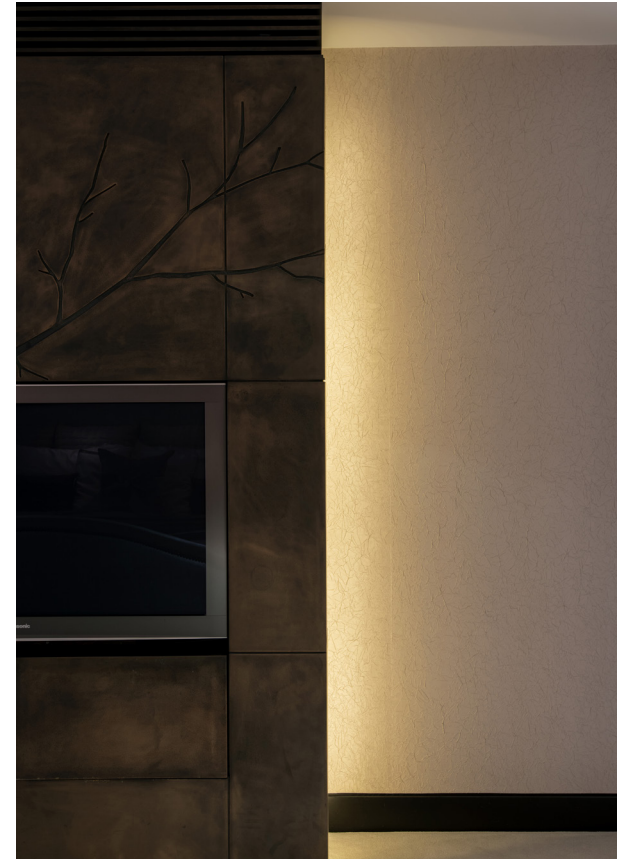






The ultra-modern, open plan kitchen boasts beautifully crafted joinery by Boffi, with worktops in absolute black zodiac Quartz. The state-of-the-art kitchen appliances by Gaggenau include a full-height wine cooler, built-in coffee machine and Quooker hot water tap.





Three lavish bedroom suites are also arranged over the fifth floor, all offering luxurious en suite bathrooms and custom-made sliding wardrobes. The principal bedroom suite showcases a dressing room and sizable marble en suite bathroom.









The magnificent roof terrace occupies the whole seventh floor of the Walpole Mayfair and offers spectacular views over the city. The catering island, with integrated sink and BBQ, is ideal for hosting private roof-top summer gatherings. The Walpole is a prestigious development from Oliver Burns and benefits from 24 hour concierge.



Tenure

Leasehold circa 989 years remaining

Price

£17,500,000

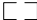
Local Authority

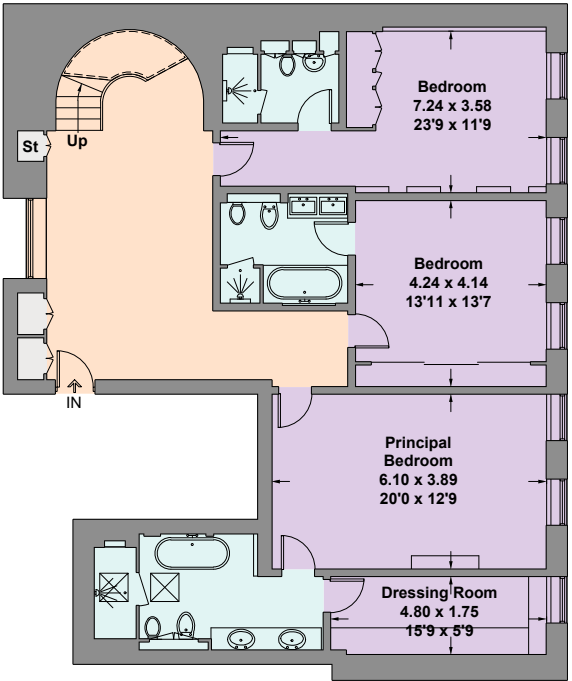
Westminster

EPC

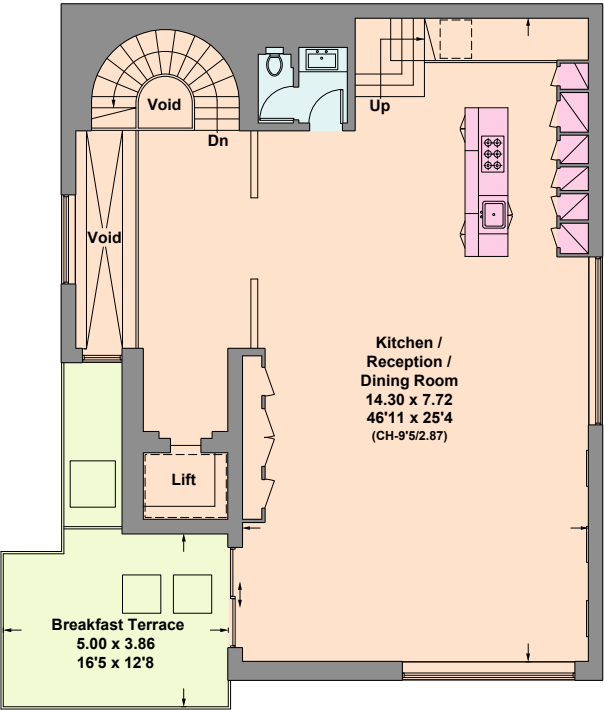
C



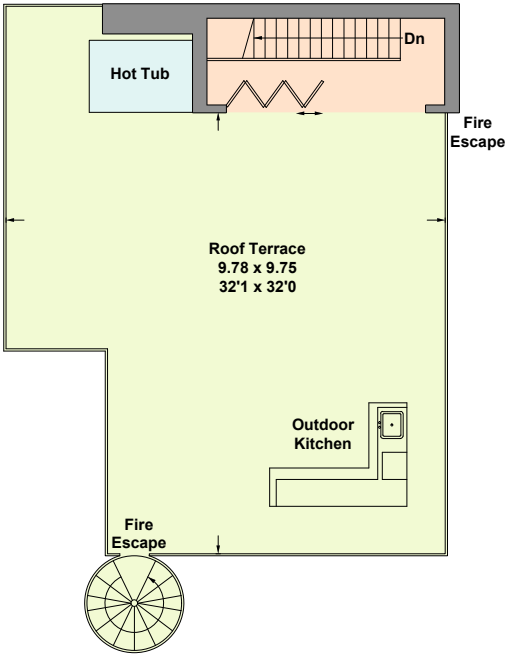
 = Reduced head height below 1.5m



Fifth Floor



Sixth Floor



Seventh Floor

Fifth Floor

134.4 sq m
1447 sq ft

Sixth Floor

140.9 sq m
1517 sq ft

External Area

23.6 sq m
254 sq ft

Seventh Floor

10.3 sq m
111 sq ft

External Area

97.4 sq m
1048 sq ft

**Approximate
Floor Area**

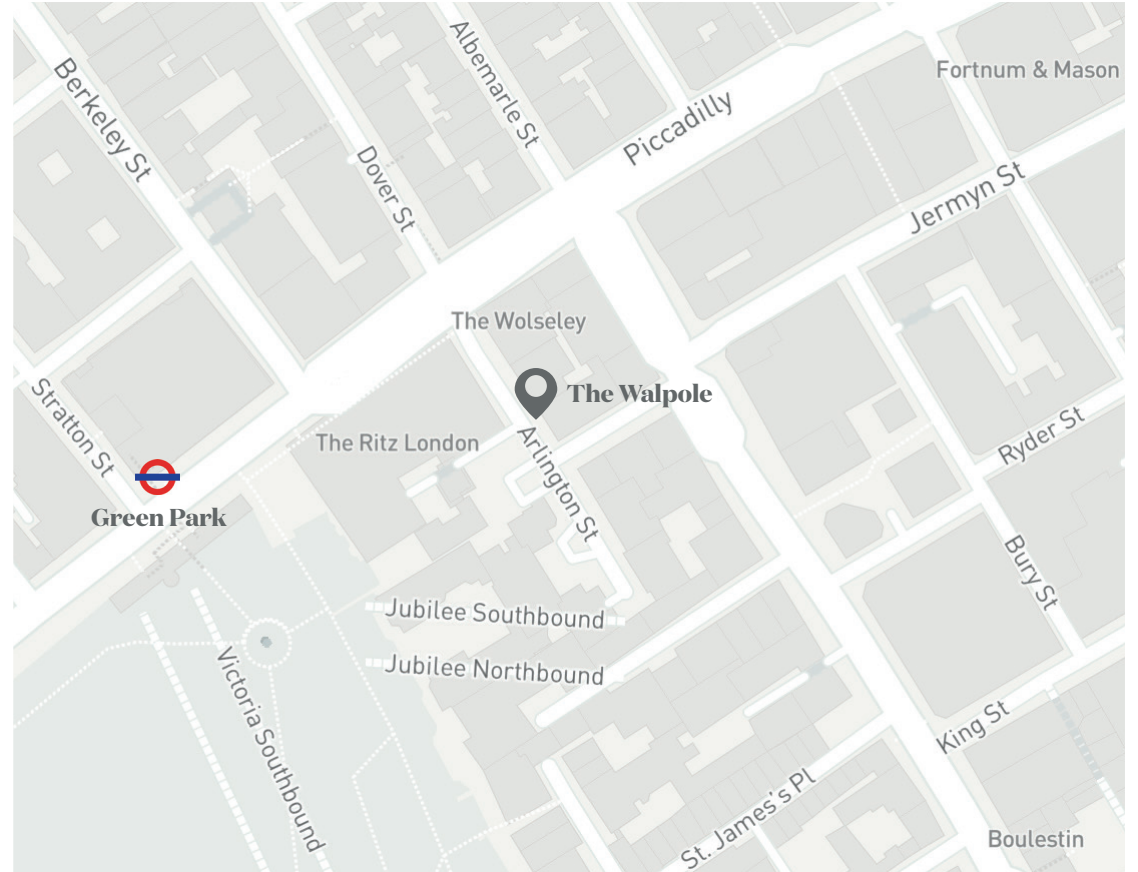
**278.8 sq m
3001 sq ft**

(Excluding Void/Including Lift)
Including Limited Use Area
8.1 sq m / 87 sq ft

**Approximate
External Area**

**121.0 sq m
1302 sq ft**

This plan is for layout guidance only. Not drawn to scale unless stated. Windows and door openings are approximate. Whilst every care is taken in the preparation of this plan, please check all dimensions, shapes and compass bearings before making any decisions reliant upon them. (ID704615)



Location

Arlington Street is one of London's most sought-after addresses located moments from the Ritz Hotel, Green Park and Buckingham Palace. The property is surrounded by many world-famous eateries such as Hide Piccadilly and the Wolseley. An array of designer retailers can be found along Old Bond Street and New Bond Street. Green Park Station is the nearest tube station





Photography & words



Brochure design



Savills
Mayfair
36 North Audley Street
London W1K 6ZJ
[savills.com](https://www.savills.com)



Knight Frank
Mayfair
120a Mount Street
London W1K 3NN
[knightfrank.co.uk](https://www.knightfrank.co.uk)

I would be delighted to tell you more.

Simon Burgoyne
020 7647 6615
Simon.Burgoyne@knightfrank.com

Claire Reynolds
020 7578 5111
creynolds@savills.com



Connecting people & property, perfectly.

Important Notice: 1. Particulars: These particulars are not an offer or contract, nor part of one. You should not rely on statements by Knight Frank LLP in the particulars or by word of mouth or in writing ("information") as being factually accurate about the property, its condition or its value. Neither Knight Frank LLP nor any joint agent has any authority to make any representations about the property, and accordingly any information given is entirely without responsibility on the part of the agents, seller(s) or lessor(s). 2. Photos, Videos etc: The photographs, property videos and virtual viewings etc. show only certain parts of the property as they appeared at the time they were taken. Areas, measurements and distances given are approximate only. 3. Regulations etc: Any reference to alterations to, or use of, any part of the property does not mean that any necessary planning, building regulations or other consent has been obtained. A buyer or lessee must find out by inspection or in other ways that these matters have been properly dealt with and that all information is correct. 4. VAT: The VAT position relating to the property may change without notice. 5. To find out how we process Personal Data, please refer to our Group Privacy Statement and other notices at <https://www.knightfrank.com/legals/privacy-statement>.

Particulars dated 20/11/20. Photographs and videos dated 18/11/20.

Knight Frank is the trading name of Knight Frank LLP. Knight Frank LLP is a limited liability partnership registered in England and Wales with registered number OC305934. Our registered office is at 55 Baker Street, London W1U 8AN where you may look at a list of members' names. If we use the term 'partner' when referring to one of our representatives, that person will either be a member, employee, worker or consultant of Knight Frank LLP and not a partner in a partnership. If you do not want us to contact you further about our services then please contact us by either calling 020 3544 0692, email to help@knightfrank.com or post to our UK Residential Marketing Manager at our registered office (above) providing your name and address. KF-201021-02GG-B