

# Bourdon Street

MAYFAIR W1K



**A phenomenal six  
bedroomed Mayfair home,  
offering an expansive living  
and entertaining space  
with luxurious interiors  
throughout, private indoor  
pool and gym.**



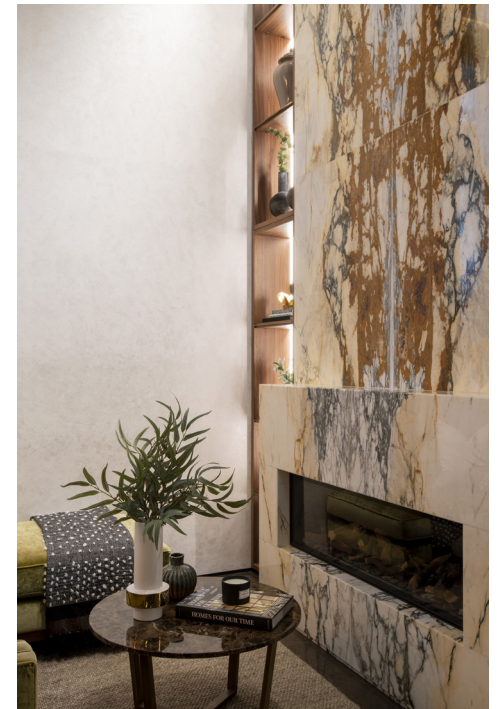


This stunning house was once occupied by famous 1960s fashion photographer, Terence Donovan, and has recently undergone extensive redevelopment, making it one of the most unique houses in Mayfair. The property measures over 5,500 Sqft and is arranged over four floors with a beautiful glass lift within a light filled atrium.





Upon entering the house at ground level, one is met with a breathtaking double height living and dining space. The dining area has a ceiling height of 5.5 metres, with a full height marble fire-place feature wall towering over the ground floor reception room area.





The ultra-modern, sleek kitchen has integrated Gaggenau appliances and a large marble breakfast bar ideal for more casual dining. For the larger dinner parties there is a fully kitted-out chef's kitchen attached to the garage for private fine dining experiences from the comfort of one's own home.





The lower ground floor of this beautiful home offers a private spa experience, with a steam room, 10 metre indoor swimming pool and a gym. The swimming pool has a stunning glass wall looking through to the gym, with skylights looking up into the ground floor living space. Overlooking the ground floor living and dining space there is a sizable drawing room on a Mezzanine.







The property also features a large and luxurious principal bedroom with en suite bathroom, as well as an impressive dressing area with extensive wardrobe space. There are a further five bedrooms, with four boasting beautifully lavish en suites. A staff studio room can be found, self-contained on the first floor of the house.










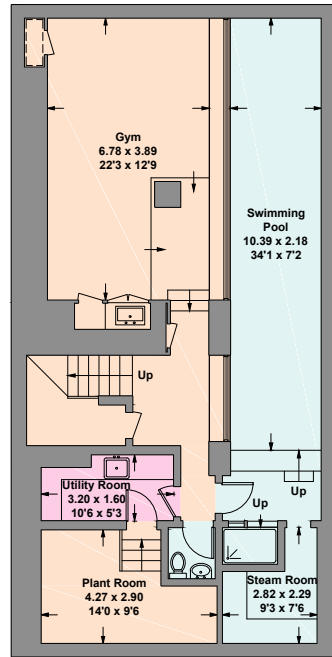
**Tenure**  
Freehold

**Price**  
Guide Price: £18,250,000

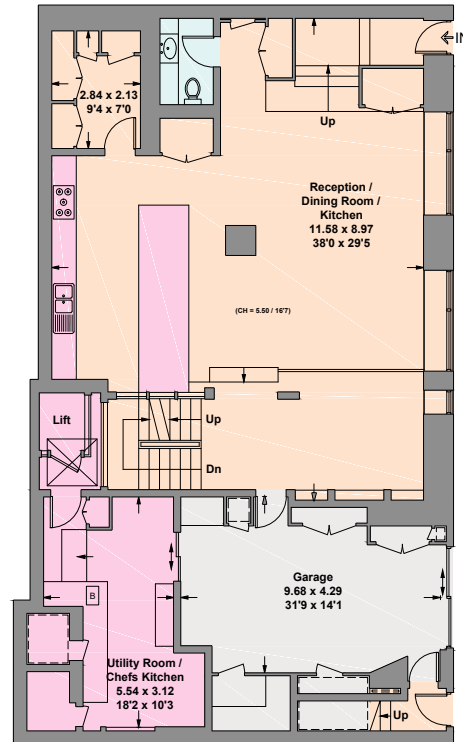
**Local Authority**  
Westminster

**EPC**  
Exempt (listed building)

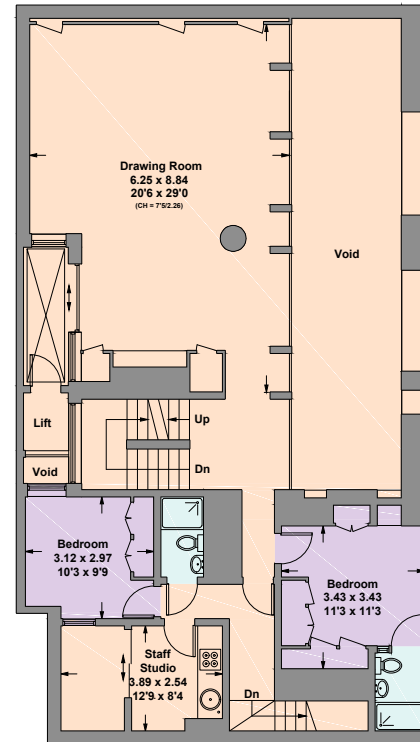
 Reduced head height below 1.5m



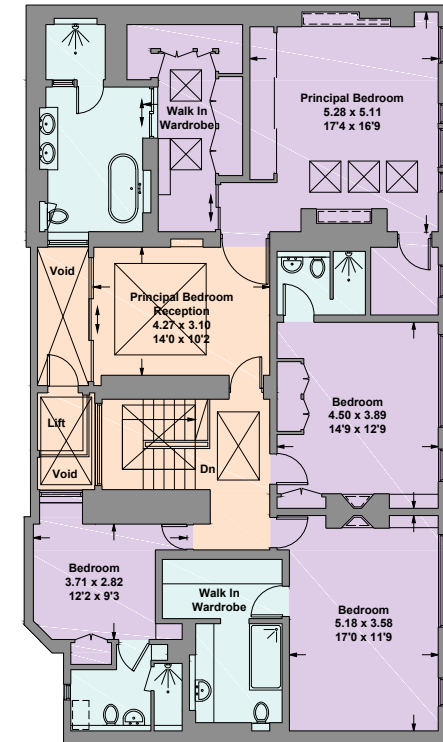
Lower Ground Floor



Ground Floor



First Floor



Second Floor

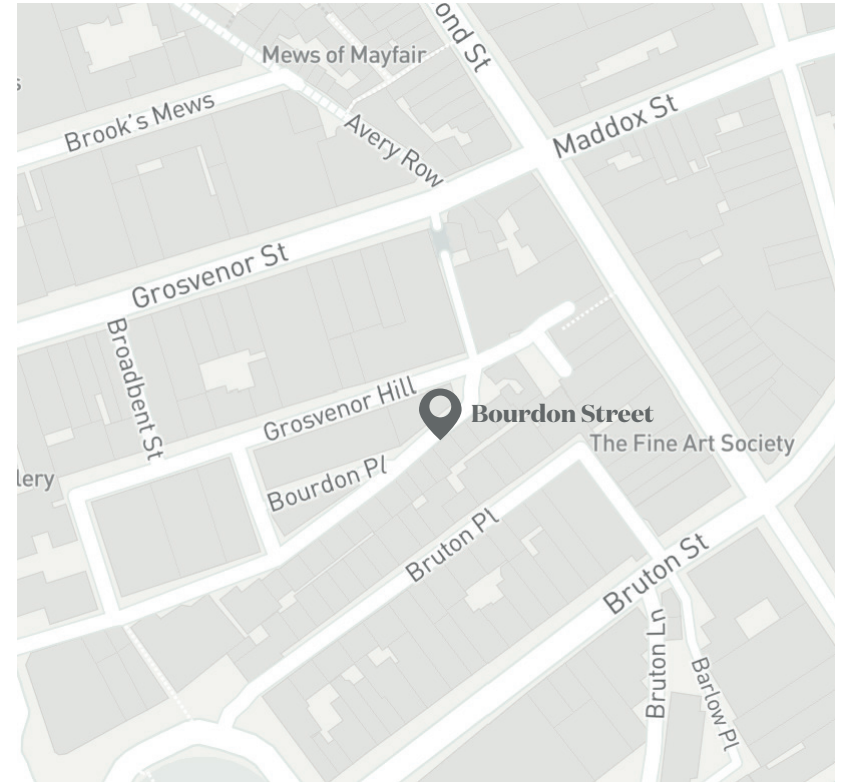


Approximate  
Floor Area  
**537 sq m**  
**5780 sq ft**

(Including Garage/  
Excluding Voids / Lift)

Including Limited Use Area  
8.1 sq m / 87 sq ft

This plan is for layout guidance only. Not drawn to scale unless stated. Windows and door openings are approximate. Whilst every care is taken in the preparation of this plan, please check all dimensions, shapes and compass bearings before making any decisions reliant upon them. (ID768319)



## Location

Bourdon Street is bound in history as one of Mayfair's most prestigious addresses.

Berkeley Square is located at the south side of Bourdon Street where one can find

exclusive private members' clubs such as Annabel's, and famous restaurants such as Sexy Fish. Bourdon Street is also just moments from the designer retailers along Old Bond Street. Mount Street is close by, offering an array of designer retailers, restaurants, and The Connaught hotel.





Knight Frank  
Mayfair  
120a Mount Street  
London W1K 3NN  
[knightfrank.co.uk](https://www.knightfrank.co.uk)

**I would be delighted to tell you more.**

Alastair Nicholson  
02076476612  
[alastair.nicholson@knightfrank.com](mailto:alastair.nicholson@knightfrank.com)



**Connecting people & property, perfectly.**

Important Notice: 1. Particulars: These particulars are not an offer or contract, nor part of one. You should not rely on statements by Knight Frank LLP in the particulars or by word of mouth or in writing ("information") as being factually accurate about the property, its condition or its value. Neither Knight Frank LLP nor any joint agent has any authority to make any representations about the property, and accordingly any information given is entirely without responsibility on the part of the agents, seller(s) or lessor(s). 2. Photos, Videos etc: The photographs, property videos and virtual viewings etc. show only certain parts of the property as they appeared at the time they were taken. Areas, measurements and distances given are approximate only. 3. Regulations etc: Any reference to alterations to, or use of, any part of the property does not mean that any necessary planning, building regulations or other consent has been obtained. A buyer or lessee must find out by inspection or in other ways that these matters have been properly dealt with and that all information is correct. 4. VAT: The VAT position relating to the property may change without notice. 5. To find out how we process Personal Data, please refer to our Group Privacy Statement and other notices at <https://www.knightfrank.com/legals/privacy-statement>.

Knight Frank is the trading name of Knight Frank LLP. Knight Frank LLP is a limited liability partnership registered in England and Wales with registered number OC305934. Our registered office is at 55 Baker Street, London W1U 8AN where you may look at a list of members' names. If we use the term 'partner' when referring to one of our representatives, that person will either be a member, employee, worker or consultant of Knight Frank LLP and not a partner in a partnership. If you do not want us to contact you further about our services then please contact us by either calling 020 3544 0692, email to [marketing.help@knightfrank.com](mailto:marketing.help@knightfrank.com) or post to our UK Residential Marketing Manager at our registered office (above) providing your name and address. KF-201021-02GG-B