



PALACE GARDENS TERRACE

Kensington W8



PALACE GARDENS TERRACE, KENSINGTON W8

An outstanding white stucco fronted four bedroom house with a beautifully landscaped west-facing garden on one of Kensington's most sought after streets.



Local Authority: Royal Borough of Kensington and Chelsea

Council Tax band: H

Tenure: Freehold

Guide Price: £9,350,000



DESCRIPTION

Palace Gardens Terrace is one of Kensington's most popular addresses, and we are delighted to present this beautiful white stucco-fronted four bedroom period house.

This attractively positioned terraced house is on the elevated section on the western side of the street and is beautifully presented throughout.







DESCRIPTION

The house is wide, bright and airy, and has the significant advantage of having only four floors. There is stunning volume at every level, providing an exceptionally spacious feel throughout.

The layout is well-balanced, with the living space over the ground floors and the bedrooms on the upper floors. The kitchen/breakfast area opens out onto a beautifully landscaped west-facing garden at the rear of the house

Palace Gardens Terrace is wide, quiet and ideally located. It runs parallel to and between Kensington Palace Gardens and Kensington Church Street south of Notting Hill Gate.



DESCRIPTION

The location offers excellent access to Kensington Gardens and Hyde Park, as well as to a wide range of local shopping, restaurants, and other amenities.

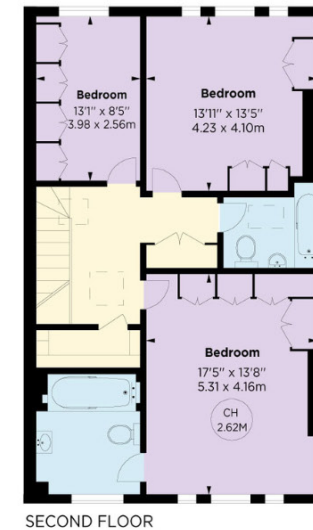
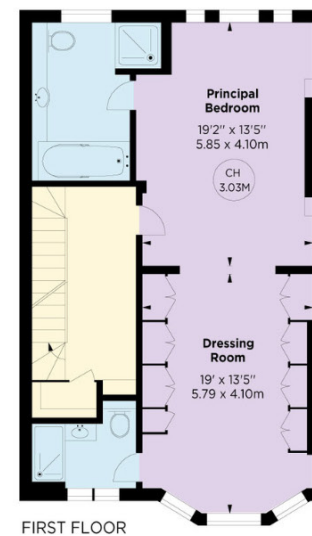
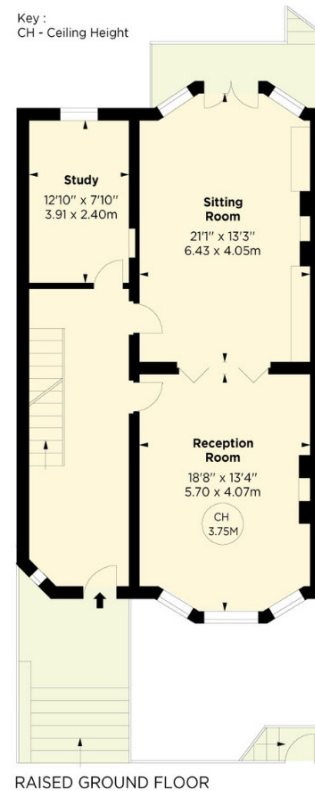
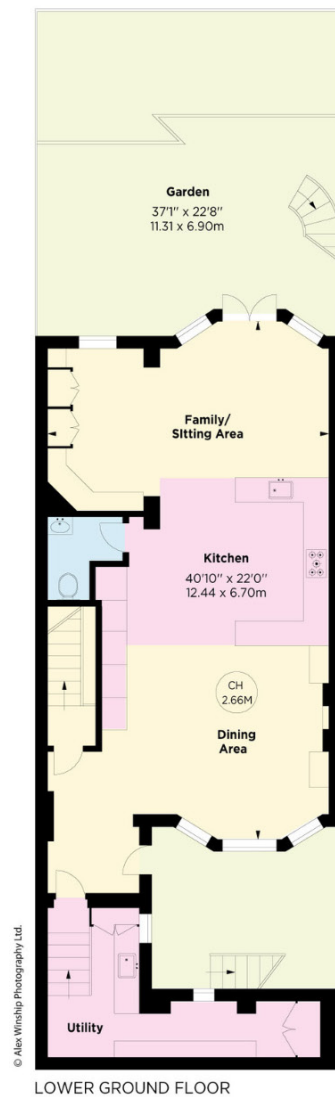
Very convenient transport links can be easily accessed via the underground stations at High Street Kensington (Circle and District Lines) and Notting Hill Gate (Circle, District, and Central Lines).

Residents may also choose to benefit from the popular social events and sense of community provided by the local Cherry Trees Residents' Association.









Approximate Gross Internal Area = 330.54 sq m / 3,558 sq ft

This plan is for layout guidance only. Not drawn to scale unless stated. Windows and door openings are approximate. Whilst every care is taken in the preparation of this plan, please check all dimensions, shapes and compass bearings before making any decisions reliant upon them. (ID767266)

We would be delighted
to tell you more.

Charles Olver
+44 20 7349 4302
charles.olver@knightfrank.com

Knight Frank Kensington Sales
52-56 Kensington Church Street
W8 4DB

Will Allen
+44 20 3892 3575
will.allen@knightfrank.com

[knightfrank.co.uk](https://www.knightfrank.co.uk)

Your partners in property

1. Particulars: These particulars are not an offer or contract, nor part of one. You should not rely on statements given by Knight Frank in the particulars, by word of mouth or in writing ("information") as being factually accurate about the property, its condition or its value. Neither Knight Frank nor any joint agent has any authority to make any representations about the property, and accordingly any information given is entirely without responsibility on the part of Knight Frank. 2. Material Information: Please note that the material information is provided to Knight Frank by third parties and is provided here as a guide only. While Knight Frank has taken steps to verify this information, we advise you to confirm the details of any such material information prior to any offer being submitted. If we are informed of changes to this information by the seller or another third party, we will use reasonable endeavours to update this as soon as practical. 3. Photos, Videos etc: The photographs, property videos and virtual viewings etc. show only certain parts of the property as they appeared at the time they were taken. Areas, measurements and distances given are approximate only. 4. Regulations etc: Any reference to alterations to, or use of, any part of the property does not mean that any necessary planning, building regulations or other consent has been obtained. A buyer must find out by inspection or in other ways that these matters have been properly dealt with and that all information is correct. 5. Fixtures and fittings: A list of the fitted carpets, curtains, light fittings and other items fixed to the property which are included in the sale (or may be available by separate negotiation) will be provided by the Seller's Solicitors. 6. VAT: The VAT position relating to the property may change without notice. 7. To find out how we process Personal Data, please refer to our Group Privacy Statement and other notices at <https://www.knightfrank.com/legals/privacy-statement>.

Particulars dated May 2024. Photographs and videos dated May 2024. All information is correct at the time of going to print. Knight Frank is the trading name of Knight Frank LLP. Knight Frank LLP is a limited liability partnership registered in England and Wales with registered number OC305934. Our registered office is at 55 Baker Street, London W1U 8AN. We use the term 'partner' to refer to a member of Knight Frank LLP, or an employee or consultant. A list of members names of Knight Frank LLP may be inspected at our registered office. If you do not want us to contact you further about our services then please contact us by either calling 020 3544 0692, email to marketing.help@knightfrank.com or post to our UK Residential Marketing Manager at our registered office (above) providing your name and address.