



COPE PLACE

Kensington, W8



COPE PLACE, KENSINGTON, W8

An exceptional four bedroom house, with a south-facing garden in the heart of Kensington.



4



4



2

EPC

C

Local Authority: Royal Borough of Kensington and Chelsea

Council Tax band: H

Tenure: Freehold

Guide Price: £3,850,000



PROPERTY DESCRIPTION

An impressive and meticulously designed four bedroom family home with a south-facing garden situated on a highly sought-after road in Kensington, W8.

The property has recently been refurbished to a high standard and offers classical charm and contemporary design. Arranged over four floors and occupying approx. 2,045 sq. ft., the house offers an excellent blend of living and entertaining space, ideal for a family.







PROPERTY DESCRIPTION

On entering the property, there is an elegant hallway that gives access to a wonderfully bright, open-plan double reception room complete with high ceilings, a feature fireplace and wonderful views over the garden. At the rear of this floor, there is a well-designed cloakroom and shower room.

On the lower ground is an immaculately designed kitchen/dining room with a breakfast bar and sliding doors that seamlessly flow out to a beautifully landscaped private garden. The garden has a water feature and mature green plants that provide a quiet and relaxing place to entertain in the summer.

The lower ground floor further benefits from a self-contained studio space complete with a shower room, kitchenette and private entrance.

Upstairs is an impressive principal bedroom suite with bespoke fitted wardrobes and a spacious ensuite bathroom. A further double bedroom has an en suite shower room and a lovely single bedroom with views over the garden.



LOCATION DESCRIPTION

Cope Place is ideally situated, just south of Kensington High Street and therefore benefits from the shopping and excellent transport facilities of the area.

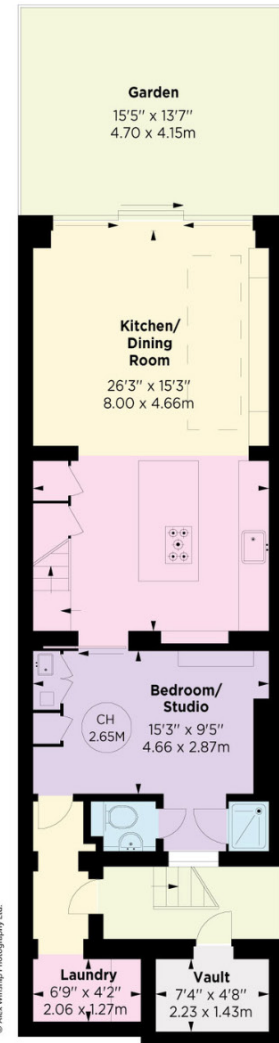
The open space of Kensington Gardens and Holland Park are also nearby.



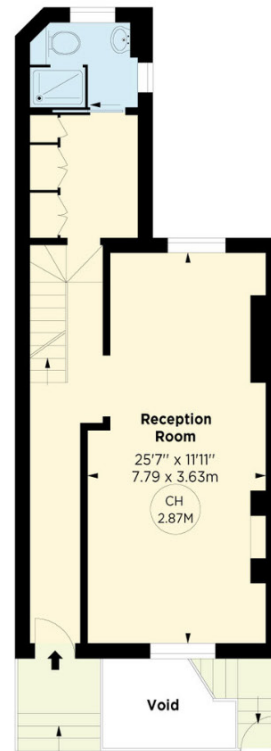




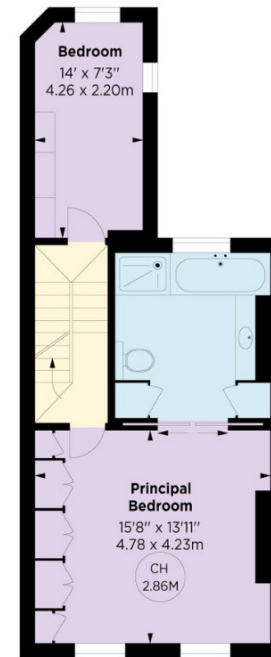
Key :
CH - Ceiling Height



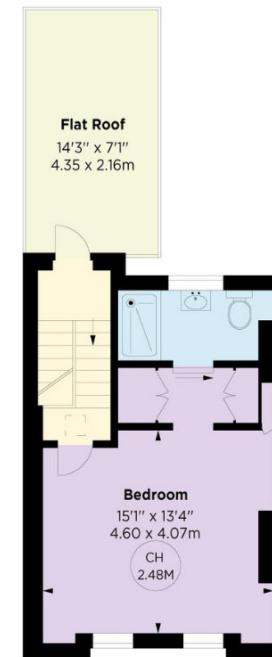
LOWER GROUND FLOOR



RAISED GROUND FLOOR



FIRST FLOOR



SECOND FLOOR



Approximate Gross Internal Area = 193.49 sq m / 2082 sq ft

This plan is for layout guidance only. Not drawn to scale unless stated. Windows and door openings are approximate. Whilst every care is taken in the preparation of this plan, please check all dimensions, shapes and compass bearings before making any decisions reliant upon them. (ID767266)

We would be delighted
to tell you more.

Will Allen

07929771130

will.allen@knightfrank.com

Kensington

52-56 Kensington Church Street

W8 4DB

knightfrank.co.uk

Your partners in property

1. Particulars: These particulars are not an offer or contract, nor part of one. You should not rely on statements given by Knight Frank in the particulars, by word of mouth or in writing ("information") as being factually accurate about the property, its condition or its value. Neither Knight Frank nor any joint agent has any authority to make any representations about the property, and accordingly any information given is entirely without responsibility on the part of Knight Frank. 2. Material Information: Please note that the material information is provided to Knight Frank by third parties and is provided here as a guide only. While Knight Frank has taken steps to verify this information, we advise you to confirm the details of any such material information prior to any offer being submitted. If we are informed of changes to this information by the seller or another third party, we will use reasonable endeavours to update this as soon as practical. 3. Photos, Videos etc: The photographs, property videos and virtual viewings etc. show only certain parts of the property as they appeared at the time they were taken. Areas, measurements and distances given are approximate only. 4. Regulations etc: Any reference to alterations to, or use of, any part of the property does not mean that any necessary planning, building regulations or other consent has been obtained. A buyer must find out by inspection or in other ways that these matters have been properly dealt with and that all information is correct. 5. Fixtures and fittings: A list of the fitted carpets, curtains, light fittings and other items fixed to the property which are included in the sale (or may be available by separate negotiation) will be provided by the Seller's Solicitors. 6. VAT: The VAT position relating to the property may change without notice. 7. To find out how we process Personal Data, please refer to our Group Privacy Statement and other notices at <https://www.knightfrank.com/legals/privacy-statement>.

Particulars dated May 2024. Photographs and videos dated May 2024. All information is correct at the time of going to print. Knight Frank is the trading name of Knight Frank LLP. Knight Frank LLP is a limited liability partnership registered in England and Wales with registered number OC305934. Our registered office is at 55 Baker Street, London W1U 8AN. We use the term 'partner' to refer to a member of Knight Frank LLP, or an employee or consultant. A list of members names of Knight Frank LLP may be inspected at our registered office. If you do not want us to contact you further about our services then please contact us by either calling 020 3544 0692, email to marketing.help@knightfrank.com or post to our UK Residential Marketing Manager at our registered office (above) providing your name and address.