



Wykeham Rise, Totteridge, N20



Wykeham Rise, Totteridge N20

A truly outstanding family home with extensive south facing gardens in the heart of Totteridge.

Extending to approximately 6,700 sq ft of lateral accommodation arranged over two principal floors, a pool and spa complex, parking and garaging for several cars together with extensive south-facing gardens with far-reaching views across neighbouring countryside.

The property offers scope (subject to obtaining necessary permissions) for a new owner to further extend to create a truly outstanding property in one of Totteridge Village's most sought-after addresses.



Guide price: £7,750,000

Tenure: Freehold

Local authority: London Borough of Barnet

Council tax band: H







The heart of the home is the stunning triple-height reception room at the centre of the house, glazed on three sides, framing the superb views and providing a wonderful space from which to entertain. The room has been beautifully furnished by renowned interior designer Gerald Moran and opens on to a substantial dining room with a galleried library above, there is a smart modern kitchen to the side with a central kitchen island and a separate entertaining kitchen.

Six bedrooms are arranged over the ground and first floor, including a superb principal suite on the first floor with his and hers dressing rooms, a generous en suite bathroom and French doors leading to a balcony with a pretty aspect over the garden.

There is also a spacious guest suite on the first floor together with four further bedrooms and two bathrooms on the ground floor.

Of particular note are the spa and pool complex and extensive south-facing gardens to the rear with unencumbered views over neighbouring greenbelt countryside.



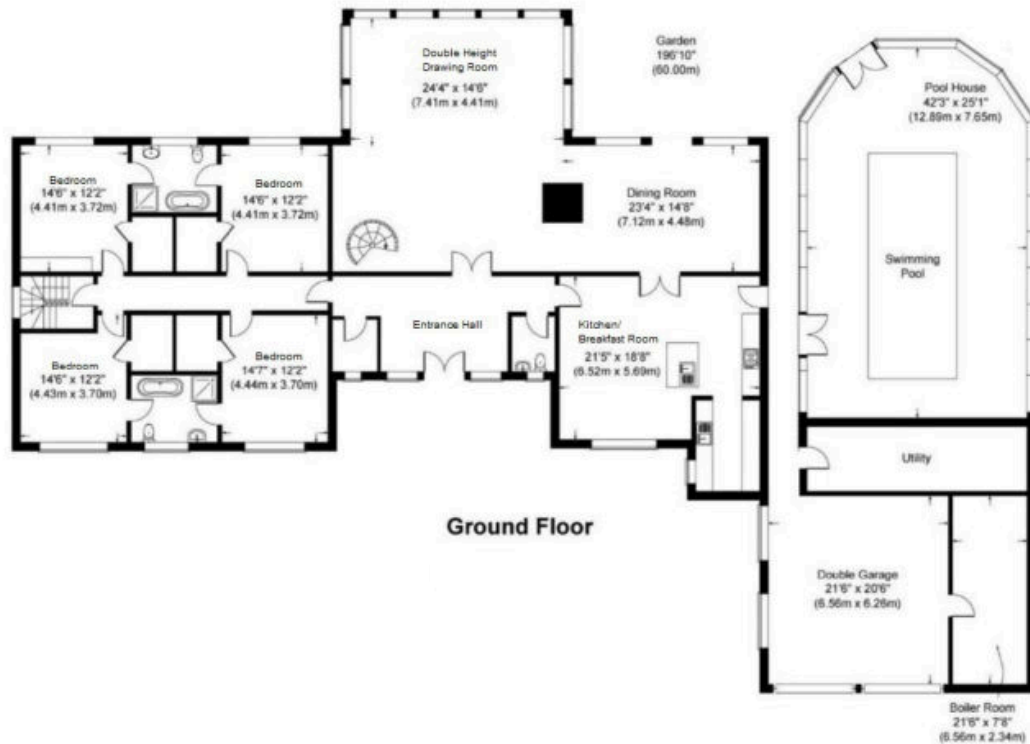
Wykeham Rise is an attractive no-through road in a prime location just off Totteridge Common. The nearest Underground station can be found at Totteridge & Whetstone, providing quick and easy access in to central London.



Outstanding views across
countryside







Approximate Gross Internal Floor Area
627 sq m / 6752 sq ft

This plan is for guidance only and must not be relied upon as a statement of fact. Attention is drawn to the important notice on the last page of the text of the Particulars.

Knight Frank
 Hampstead Sales
 58-62 Heath Street
 London
 NW3 1EN
knightfrank.co.uk

We would be delighted to tell you more

Mike Tracy
 +44 20 7317 7960
mike.tracy@knightfrank.com

Katy Brookes
 +44 20 3815 3352
katy.brookes@knightfrank.com



Fixtures and fittings: A list of the fitted carpets, curtains, light fittings and other items fixed to the property which are included in the sale (or may be available by separate negotiation) will be provided by the Seller's Solicitors.
 Important Notice: 1. Particulars: These particulars are not an offer or contract, nor part of one. You should not rely on statements by Knight Frank LLP in the particulars or by word of mouth or in writing ("information") as being factually accurate about the property, its condition or its value. Neither Knight Frank LLP nor any joint agent has any authority to make any representations about the property, and accordingly any information given is entirely without responsibility on the part of the agents, seller(s) or lessor(s). 2. Photos, Videos etc: The photographs, property videos and virtual viewings etc. show only certain parts of the property as they appeared at the time they were taken. Areas, measurements and distances given are approximate only. 3. Regulations etc: Any reference to alterations to, or use of, any part of the property does not mean that any necessary planning, building regulations or other consent has been obtained. A buyer or lessee must find out by inspection or in other ways that these matters have been properly dealt with and that all information is correct. 4. VAT: The VAT position relating to the property may change without notice. 5. To find out how we process Personal Data, please refer to our Group Privacy Statement and other notices at <https://www.knightfrank.com/legals/privacy-statement>. Particulars dated February 2024. Photographs and videos dated February 2024.
 Knight Frank is the trading name of Knight Frank LLP. Knight Frank LLP is a limited liability partnership registered in England and Wales with registered number OC305934. Our registered office is at 55 Baker Street, London W1U 8AN where you may look at a list of members' names. If we use the term 'partner' when referring to one of our representatives, that person will either be a member, employee, worker or consultant of Knight Frank LLP and not a partner in a partnership. If you do not want us to contact you further about our services then please contact us by either calling 020 3544 0692, email to marketing.help@knightfrank.com or post to our UK Residential Marketing Manager at our registered office (above) providing your name and address.