



# Priory Walk

CHELSEA SW10



A newly built five/six-bedroom home with air conditioning throughout and a 72 ft west-facing garden, located in a prime residential address in Chelsea.



An exceptional white stucco-fronted townhouse situated on the peaceful and prestigious Priory Walk in Chelsea, SW10. This newly built freehold home, arranged over five thoughtfully designed floors, offers five/six bedrooms, superb proportions, air conditioning throughout, and a beautifully landscaped 72 ft west-facing garden—a rare offering on one of Chelsea's most desirable streets.

This remarkable residence has been designed and finished to an exacting standard, combining classical proportions with contemporary comforts, advanced technology, and exceptional materials throughout. Behind its traditional façade lies a house that is essentially new-built, offering the best of both architectural elegance and modern functionality.









Entering on the raised ground floor into a grand double reception room, one is immediately drawn to the sculptural helical staircase—a striking centrepiece that sets the tone for the rest of the house. This floor is open plan, offering flexible zones for formal entertaining, library space, or relaxed family living, all beautifully finished in high-gloss walnut joinery, solid brushed brass, and softened with curved cabinetry that complements the organic flow of the space.





At the rear, a three-sided glass box summer room opens fully to a generous terrace, seamlessly merging the interior with the landscaped garden beyond. A fully fitted outdoor kitchen creates the perfect setting for al fresco dining and entertaining.





The landscaped rear garden is a stand-out feature of the home. Tumbled limestone paving and cobbles lead to a full external kitchen and entertaining area, framed by mature planting. A large walk-on glass rooflight at the rear brings abundant natural light into the basement below.

The ground floor level also includes a separate bedroom suite with en suite bathroom, a guest WC, and a utility room. With its own entrance, this floor offers a private arrangement that works well for guests or live-in staff.



The lower ground floor is a 54 ft open-plan kitchen, dining and family space, conceived for modern living.





Flooded with natural light, the space is defined by its luxurious materials. The kitchen features ultra high-gloss cabinetry, smoked glass display units, and delicate stone surfaces, with integrated Gaggeneau appliances throughout. Automatic blackout blinds allow full control of the space, day or night.





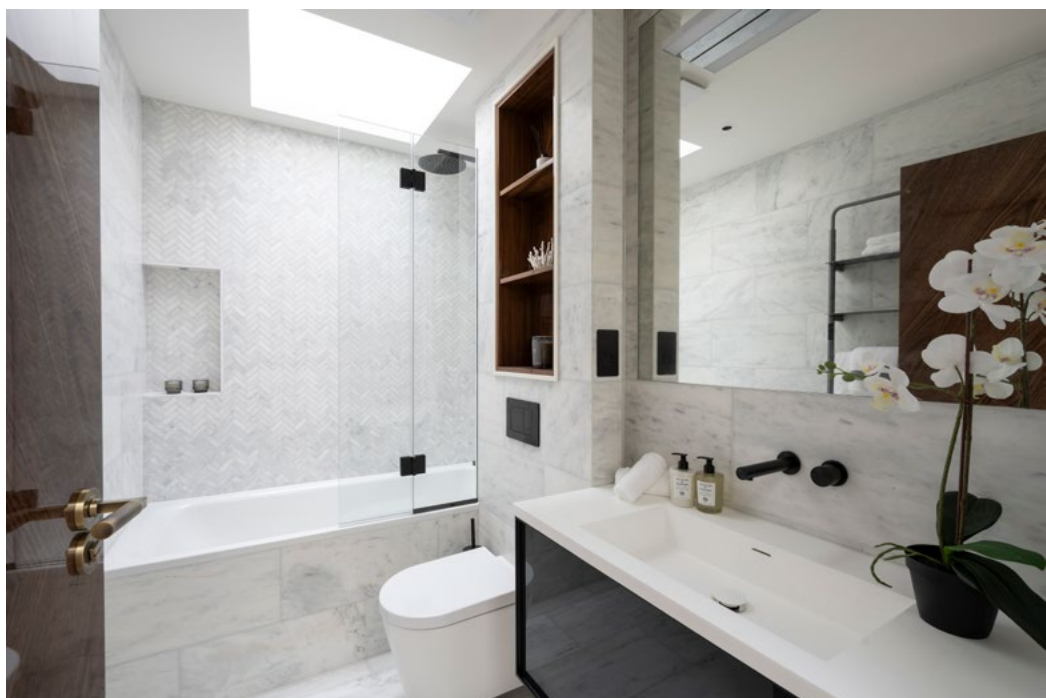




The first floor is devoted entirely to the principal bedroom suite - a tranquil and beautifully appointed retreat. The suite includes a large bedroom, a bespoke dressing area in walnut and smoked glass with solid brass inlays, and an opulent bathroom finished in hand-selected, book-matched Jurassic Onyx and Carrara marble. This suite also enjoys access to a private balcony offering green views to the front.



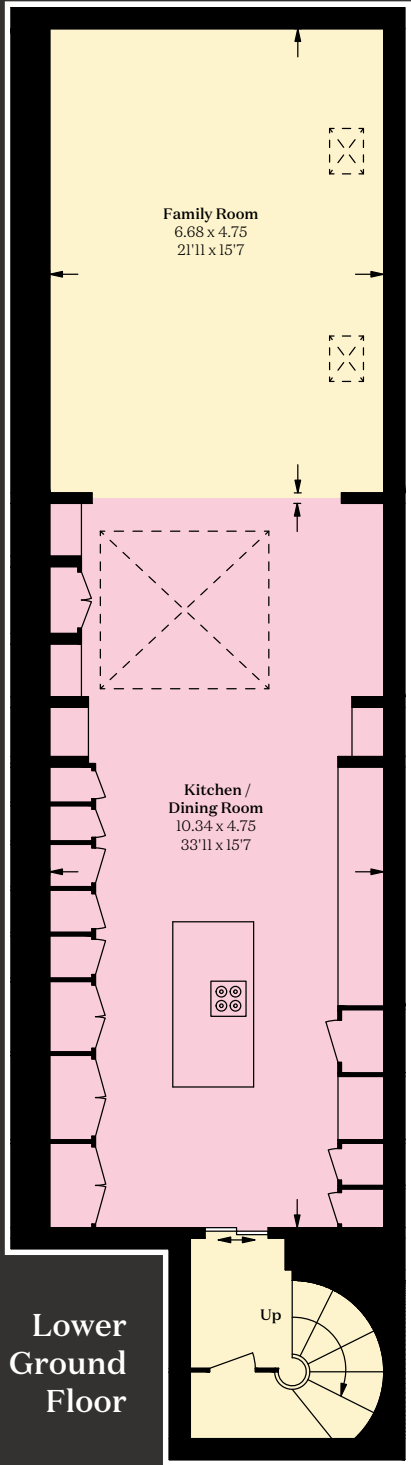




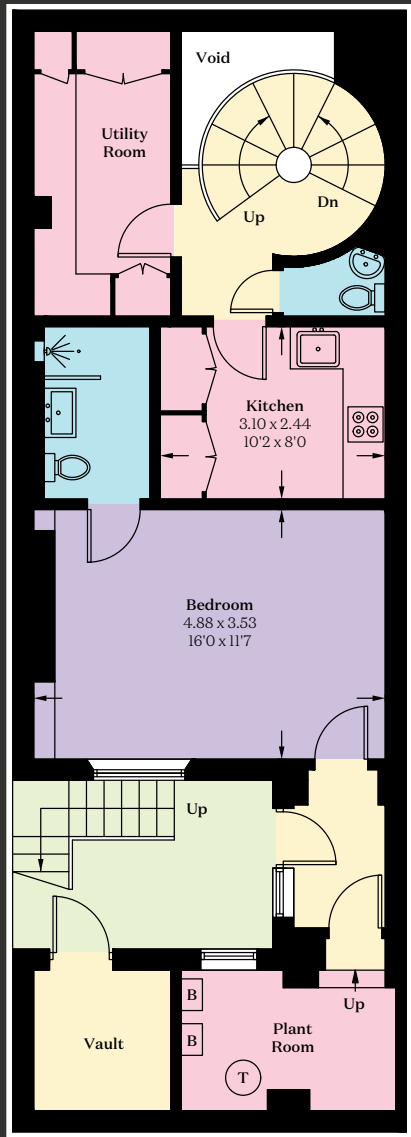
The second floor provides two generously proportioned double bedrooms, with family bathroom, while the top floor offers two additional bedrooms served by a shared shower room—ideal for guests, children, or as additional study spaces.

This house represents a rare opportunity to acquire a meticulously crafted and newly constructed residence in one of Chelsea's most exclusive addresses. Turnkey in every respect, it combines sophisticated architecture with luxurious materials and the finest contemporary living.

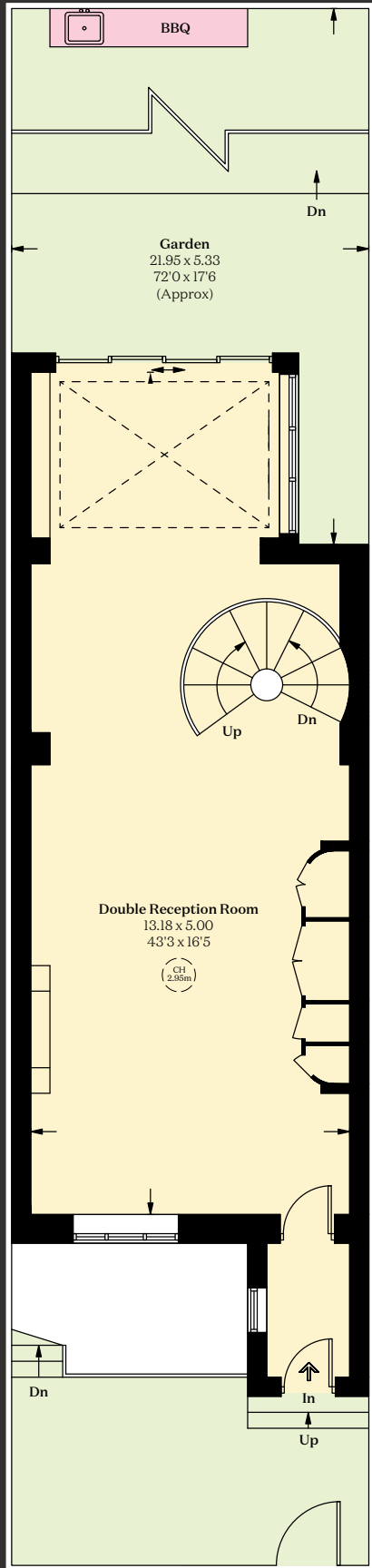




Lower  
Ground  
Floor



Ground Floor



Raised Ground Floor

Guide Price  
£11,500,000

Tenure  
Freehold

Local Authority  
Kensington & Chelsea

Council Tax  
Band H

EPC  
Rating C

Approximate Floor Area  
3,810 sq ft / 354 sq m

Vault  
43 sq ft / 4 sq m

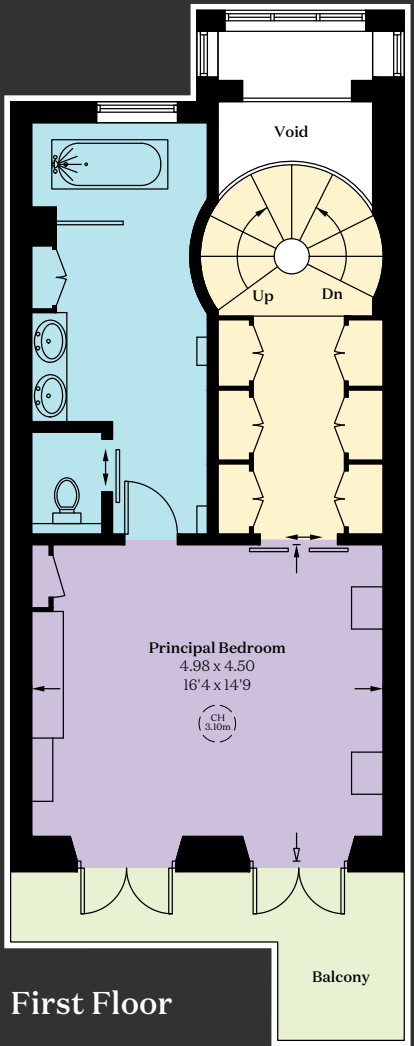
Total  
3,853 sq ft / 358 sq m  
excluding void  
including limited use area  
30 sq ft / 2.8 sq m

This plan is for guidance only and  
must not be relied upon as a statement  
of fact. Attention is drawn to the  
important notice on the last page  
of the text of the Particulars.

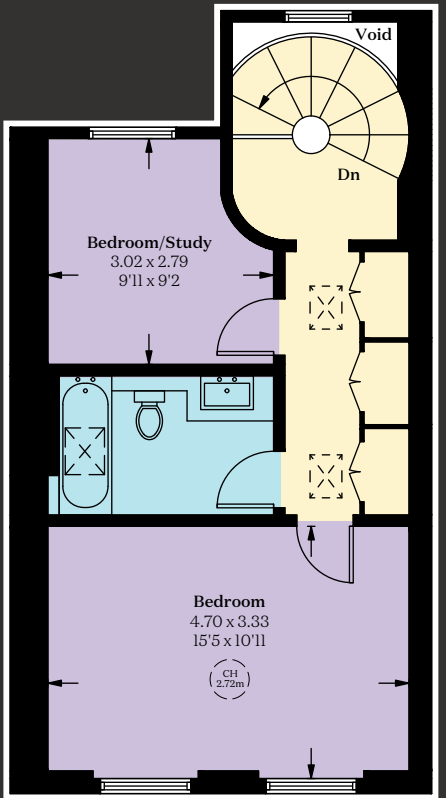
CH: Ceiling height

This plan is for layout guidance  
only. Not drawn to scale unless  
stated. Windows and door openings  
are approximate. Whilst every  
care is taken in the preparation  
of this plan, please check all  
dimensions, shapes and compass  
bearings before making any  
decisions reliant upon them.

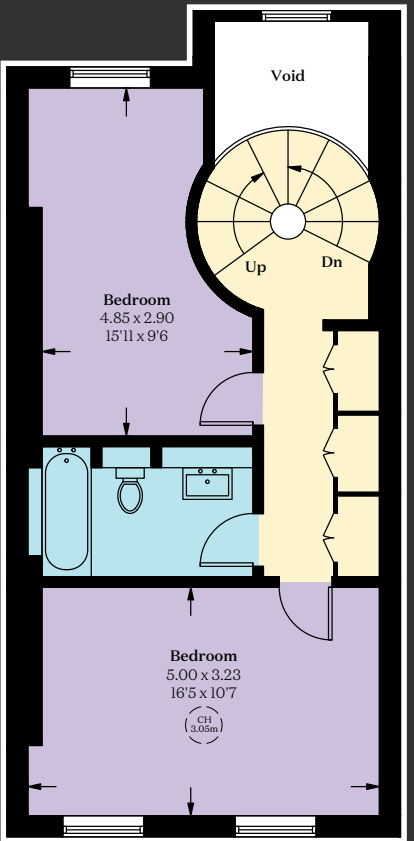
This plan has been supplied to  
The Brochure by Knight Frank



First Floor



Third Floor



Second Floor

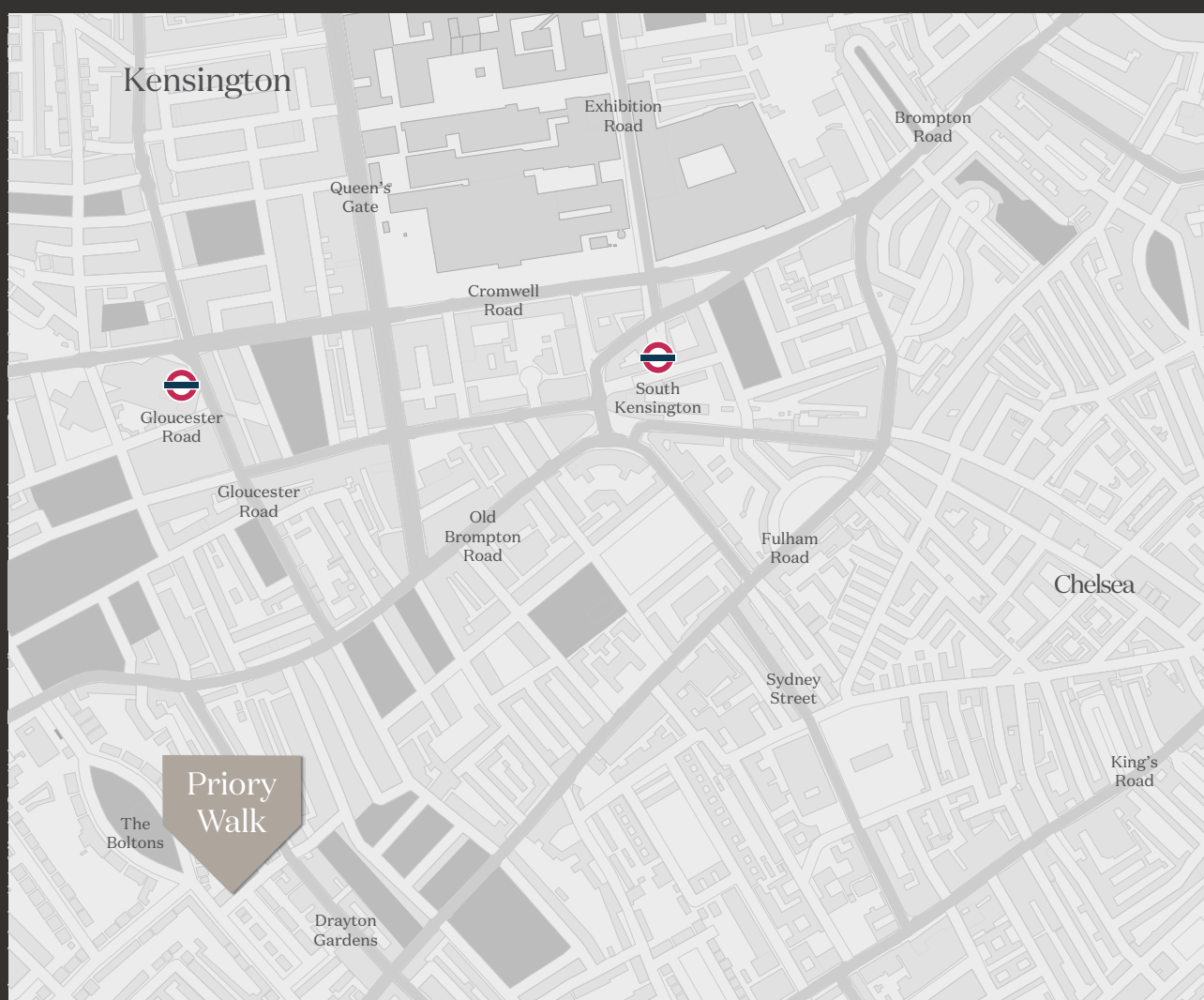


## Location

Located on a quiet, tree-lined street in the heart of Chelsea, Priory Walk offers a refined residential setting within one of London's most established areas. This desirable address combines period charm with convenient access to the cultural, retail, and dining options that characterise SW10. The surrounding area features independent shops, cafés, and restaurants, along with essential amenities such as grocers, pharmacies, and respected schools.

The nearby King's Road provides further variety, known for its distinctive mix of local businesses and established brands. Open spaces including Brompton Cemetery, Kensington Gardens, and Hyde Park are all accessible, offering opportunities for leisure and outdoor activities.

Transport links are well connected, with South Kensington and Gloucester Road Underground stations providing direct routes across Central London. Priory Walk reflects the heritage and quiet elegance of Chelsea, offering a residential setting that balances character with connectivity.



We would be delighted  
to tell you more.



**Rebecca Higgins**  
+44 7876 056 100  
[rebecca.higgins@knightfrank.com](mailto:rebecca.higgins@knightfrank.com)

**Knight Frank South Kensington**  
160 Old Brompton Road  
SW5 0BA

[knightfrank.co.uk](https://knightfrank.co.uk)



**Dan Carrington**  
+44 7557 048 284  
[dan.carrington@savills.com](mailto:dan.carrington@savills.com)

**Savills Chelsea**  
196-200 Fulham Road  
London SW10 9PN

[savills.co.uk](https://savills.co.uk)

**Fixtures and fittings:** A list of the fitted carpets, curtains, light fittings and other items fixed to the property which are included in the sale (or may be available by separate negotiation) will be provided by the Seller's Solicitors.

**Important Notice:** 1. Particulars: These particulars are not an offer or contract, nor part of one. You should not rely on statements by Knight Frank LLP in the particulars or by word of mouth or in writing ("information") as being factually accurate about the property, its condition or its value. Neither Knight Frank LLP nor any joint agent has any authority to make any representations about the property, and accordingly any information given is entirely without responsibility on the part of the agents, seller(s) or lessor(s). 2. Photos, Videos etc: The photographs, property videos and virtual viewings etc. show only certain parts of the property as they appeared at the time they were taken. Areas, measurements and distances given are approximate only. 3. Regulations etc: Any reference to alterations to, or use of, any part of the property does not mean that any necessary planning, building regulations or other consent has been obtained. A buyer or lessee must find out by inspection or in other ways that these matters have been properly dealt with and that all information is correct. 4. VAT: The VAT position relating to the property may change without notice. 5. To find out how we process Personal Data, please refer to our Group Privacy Statement and other notices at <https://www.knightfrank.com/legals/privacy-statement>.

**Particulars dated June 2025. Photographs and videos dated June 2025.**

All information is correct at the time of going to print. Knight Frank is the trading name of Knight Frank LLP. Knight Frank LLP is a limited liability partnership registered in England and Wales with registered number OC305934. Our registered office is at 55 Baker Street, London W1U 8AN. We use the term 'partner' to refer to a member of Knight Frank LLP, or an employee or consultant. A list of members names of Knight Frank LLP may be inspected at our registered office. If you do not want us to contact you further about our services then please contact us by either calling 020 3544 0692, email to [marketing.help@knightfrank.com](mailto:marketing.help@knightfrank.com) or post to our UK Residential Marketing Manager at our registered office (above) providing your name and address. 06/23/25 KF-250612-04-GG



