



## COLEHERNE MEWS

Chelsea, SW10





# A CHARMING THREE BEDROOM MEWS HOUSE

This exceptional three bedroom freehold house is peacefully situated on Coleherne Mews, a well-regarded cobbled residential street situated in Chelsea.



3



3



2

EPC

D

Local Authority: Royal Borough of Kensington and Chelsea

Council Tax band: G

Tenure: Freehold

Guide Price: £2,250,000





## MEWS HOUSE WITH A ROOF TERRACE

Finished to a high specification, the accommodation includes a stylish kitchen/diner on the ground floor. Downstairs, there is a spacious reception room/media room, which features bespoke cabinetry and a superb, temperature-controlled wine display cabinet. There is a separate room, which could be used flexibly, and an en-suite shower room. A utility room completes this floor. Wooden herringbone flooring and underfloor heating run throughout the ground and lower ground floors. On the first floor, the principal bedroom receives excellent natural light and offers generous proportions. This room has an abundance of fitted wardrobes and benefits from air conditioning. The principal bedroom is served by a bathroom, which features a beautiful free-standing, roll-top bath. There is a large double bedroom on the top floor of the house, which benefits from having an en-suite bathroom and air conditioning. There is a further bedroom, and a fantastic roof terrace which completes the accommodation.



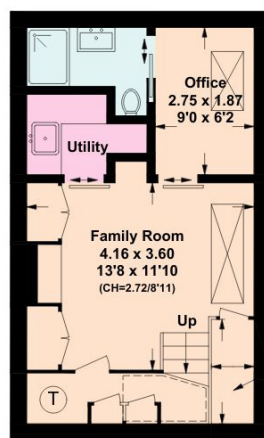




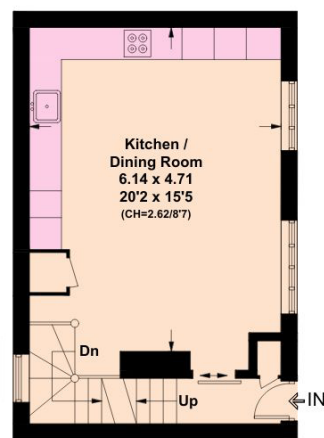




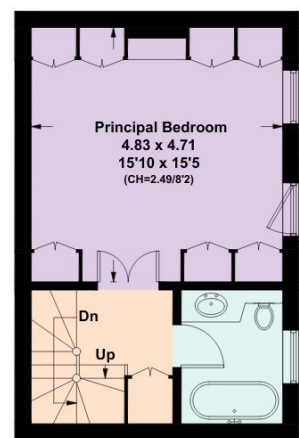




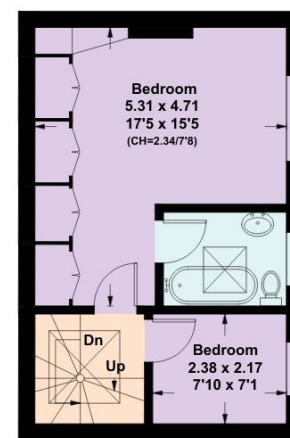
Lower Ground Floor



Ground Floor

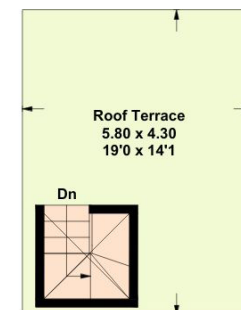


First Floor



Second Floor

□ = Reduced head height below 1.5m



Third Floor

Coleherne Mews, SW10

Approximate Gross Internal Area = 138.7 sq m / 1493 sq ft

Including Limited Use Area = 1.5sq m / 16 sq ft)

This plan is for layout guidance only. Not drawn to scale unless stated. Windows and door openings are approximate. Whilst every care is taken in the preparation of this plan, please check all dimensions, shapes and compass bearings before making any decisions reliant upon them. (ID767266)



We would be delighted  
to tell you more.

**Claire Mengham**

+44 203 978 2462

claire.mengham@knightfrank.com

**Knight Frank Chelsea and South Kensington**

352A King's Road

SW3 5UU

**knightfrank.co.uk**

**Your partners in property**

1. Particulars: These particulars are not an offer or contract, nor part of one. You should not rely on statements given by Knight Frank in the particulars, by word of mouth or in writing ("information") as being factually accurate about the property, its condition or its value. Neither Knight Frank nor any joint agent has any authority to make any representations about the property, and accordingly any information given is entirely without responsibility on the part of Knight Frank. 2. Material Information: Please note that the material information is provided to Knight Frank by third parties and is provided here as a guide only. While Knight Frank has taken steps to verify this information, we advise you to confirm the details of any such material information prior to any offer being submitted. If we are informed of changes to this information by the seller or another third party, we will use reasonable endeavours to update this as soon as practical. 3. Photos, Videos etc: The photographs, property videos and virtual viewings etc. show only certain parts of the property as they appeared at the time they were taken. Areas, measurements and distances given are approximate only. 4. Regulations etc: Any reference to alterations to, or use of, any part of the property does not mean that any necessary planning, building regulations or other consent has been obtained. A buyer must find out by inspection or in other ways that these matters have been properly dealt with and that all information is correct. 5. Fixtures and fittings: A list of the fitted carpets, curtains, light fittings and other items fixed to the property which are included in the sale (or may be available by separate negotiation) will be provided by the Seller's Solicitors. 6. VAT: The VAT position relating to the property may change without notice. 7. To find out how we process Personal Data, please refer to our Group Privacy Statement and other notices at <https://www.knightfrank.com/legals/privacy-statement>.

Particulars dated May 2024. Photographs and videos dated May 2024. All information is correct at the time of going to print. Knight Frank is the trading name of Knight Frank LLP. Knight Frank LLP is a limited liability partnership registered in England and Wales with registered number OC305934. Our registered office is at 55 Baker Street, London W1U 8AN. We use the term 'partner' to refer to a member of Knight Frank LLP, or an employee or consultant. A list of members names of Knight Frank LLP may be inspected at our registered office. If you do not want us to contact you further about our services then please contact us by either calling 020 3544 0692, email to [marketing.help@knightfrank.com](mailto:marketing.help@knightfrank.com) or post to our UK Residential Marketing Manager at our registered office (above) providing your name and address.