



## ONSLOW GARDENS

London SW7





# A BEAUTIFULLY PROPORTIONED FOUR BEDROOM MAISONETTE

With a private terrace and hot tub, this apartment is set within an elegant period building in the heart of South Kensington.



4



2



2

EPC

TBC

Local Authority: Royal Borough of Kensington and Chelsea

Council Tax band: H

Tenure: Leasehold, approximately 173 years remaining

Service Charge: £14,410 per annum, reviewed every 1 year, next review due 2026

Ground Rent: Peppercorn

**Guide Price: £3,950,000**





## WITH A PRIVATE TERRACE AND HOT TUB

Arranged over the upper floors of the building, this spacious apartment combines generous entertaining space with quiet, well-separated bedrooms.

The reception room is located on the third floor and opens directly onto a large private terrace — a rare outdoor retreat complete with a hot tub, perfect for relaxing or entertaining. A formal dining room is at the other end of the reception room, while the kitchen is neatly tucked away off this and is also accessible via the main hallway.

The upper floor hosts three double bedrooms and two bathrooms, including a principal suite. A fourth bedroom is positioned on the third floor, offering ideal flexibility as a guest room or home office.

Set on one of South Kensington's most desirable garden squares with access to communal gardens, this home offers an exceptional balance of space, light, and privacy, all moments from the amenities and transport links of the area.

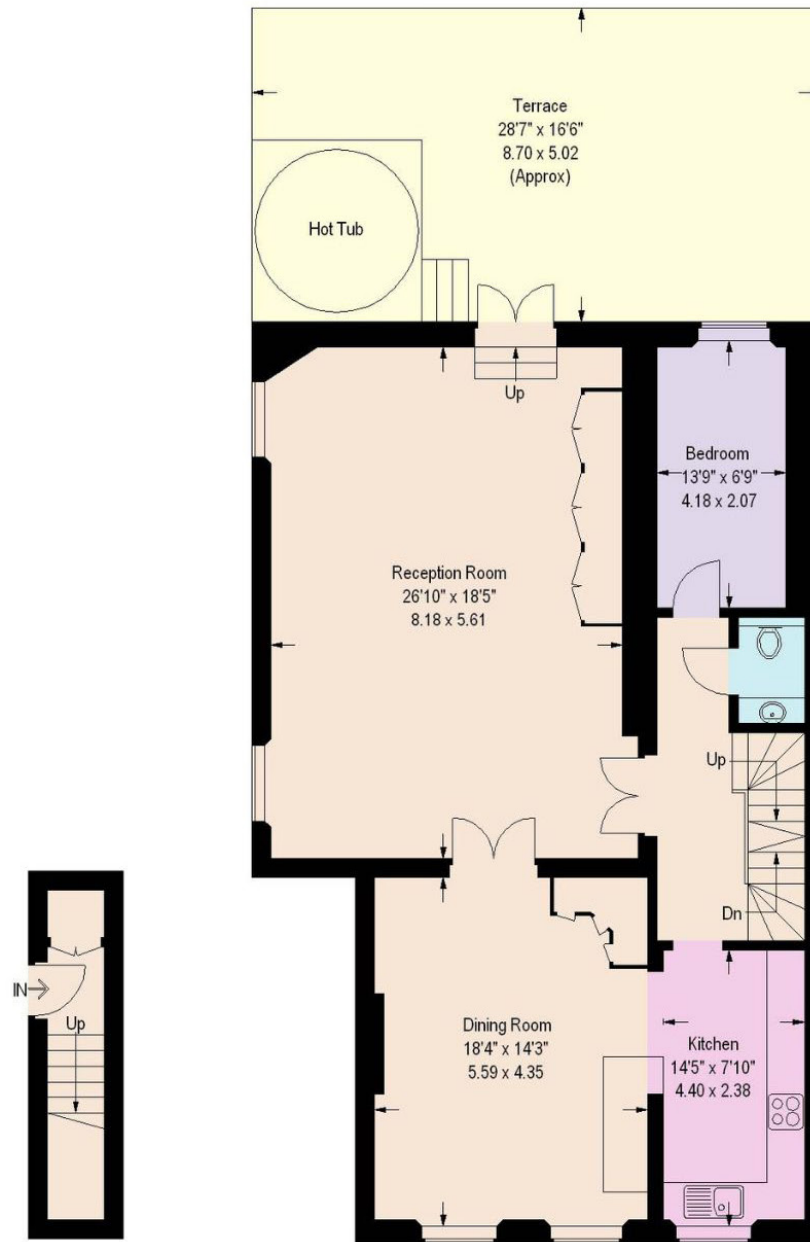




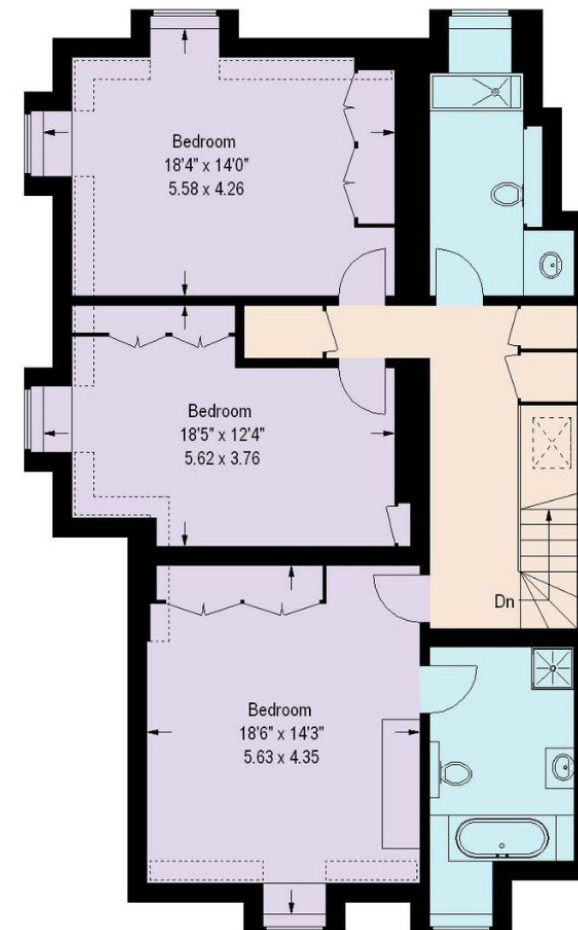








= Reduced headroom below 1.5 m / 5'0"



Approximate Gross Internal Area = 212 sq m / 2282 sq ft

This plan is for layout guidance only. Not drawn to scale unless stated. Windows and door openings are approximate. Whilst every care is taken in the preparation of this plan, please check all dimensions, shapes and compass bearings before making any decisions reliant upon them. (ID767266)

We would be delighted  
to tell you more.

**Rebecca Higgins**

020 7871 4115

Rebecca.Higgins@knightfrank.com

**Knight Frank Chelsea and South Kensington**

352A King's Road

London SW3 5UU

**knightfrank.co.uk**

**Your partners in property**

1. Particulars: These particulars are not an offer or contract, nor part of one. You should not rely on statements given by Knight Frank in the particulars, by word of mouth or in writing ("information") as being factually accurate about the property, its condition or its value. Neither Knight Frank nor any joint agent has any authority to make any representations about the property, and accordingly any information given is entirely without responsibility on the part of Knight Frank. 2. Material Information: Please note that the material information is provided to Knight Frank by third parties and is provided here as a guide only. While Knight Frank has taken steps to verify this information, we advise you to confirm the details of any such material information prior to any offer being submitted. If we are informed of changes to this information by the seller or another third party, we will use reasonable endeavours to update this as soon as practical. 3. Photos, Videos etc: The photographs, property videos and virtual viewings etc. show only certain parts of the property as they appeared at the time they were taken. Areas, measurements and distances given are approximate only. 4. Regulations etc: Any reference to alterations to, or use of, any part of the property does not mean that any necessary planning, building regulations or other consent has been obtained. A buyer must find out by inspection or in other ways that these matters have been properly dealt with and that all information is correct. 5. Fixtures and fittings: A list of the fitted carpets, curtains, light fittings and other items fixed to the property which are included in the sale (or may be available by separate negotiation) will be provided by the Seller's Solicitors. 6. VAT: The VAT position relating to the property may change without notice. 7. To find out how we process Personal Data, please refer to our Group Privacy Statement and other notices at <https://www.knightfrank.com/legals/privacy-statement>.

Particulars dated May 2025. Photographs and videos dated September 2021. All information is correct at the time of going to print. Knight Frank is the trading name of Knight Frank LLP. Knight Frank LLP is a limited liability partnership registered in England and Wales with registered number OC305934. Our registered office is at 55 Baker Street, London W1U 8AN. We use the term 'partner' to refer to a member of Knight Frank LLP, or an employee or consultant. A list of members names of Knight Frank LLP may be inspected at our registered office. If you do not want us to contact you further about our services then please contact us by either calling 020 3544 0692, email to [marketing.help@knightfrank.com](mailto:marketing.help@knightfrank.com) or post to our UK Residential Marketing Manager at our registered office (above) providing your name and address.