



Queen's Gate Gardens, South Kensington SW7



# Queen's Gate Gardens, South Kensington **SW7**

An immaculate and turnkey two bedroom lateral apartment, this stunning residence is situated on the second floor of a handsome Grade II listed white stucco-fronted Victorian building. With lift access and a prime end-of-terrace position, the property features an abundance of natural light, offering a harmonious blend of timeless elegance and modern sophistication. Overlooking a prestigious residential garden square, the south-facing triple-window reception room opens on to a full-width balcony, providing breathtaking views of the tranquil communal gardens.



2



2



1



EPC  
D

**Asking price:** £4,950,000

**Tenure:** Share of freehold plus leasehold, approximately 955 years remaining

**Service charge:** approximately £10,026 per annum, reviewed every year, next review due 2025

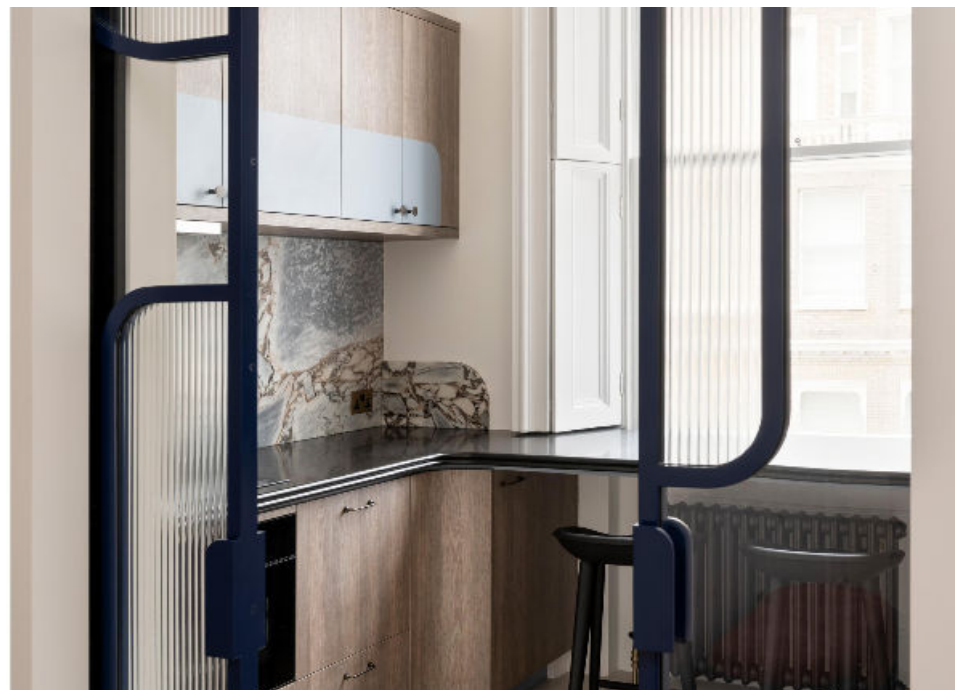
**Local authority:** Royal Borough of Kensington & Chelsea

**Council tax band:** H







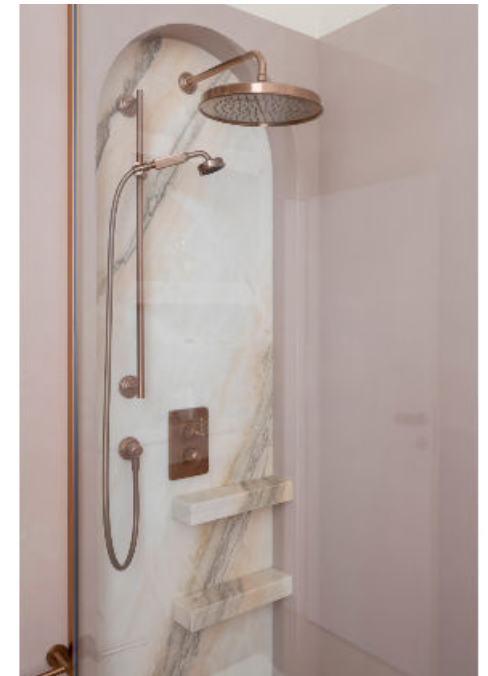






The interior layout is perfectly balanced, featuring soaring ceilings exceeding three metres and generous proportions throughout. The standout reception room, with its three floor-to-ceiling French doors, floods the space with natural light and creates a seamless flow into the entrance hall. This, in turn, leads to a bespoke, well-appointed kitchen equipped with premium integrated appliances, handcrafted cabinetry, and luxurious worktop surfaces. Every detail has been thoughtfully curated to ensure both aesthetic appeal and functional excellence.

The principal bedroom is a private sanctuary located at the rear of the apartment. It is complemented by an expansive dressing room with bespoke storage and an en suite bathroom featuring a walk-in shower, a statement bathtub, and exquisite marble finishes.



Finished to the highest standards, this exceptional apartment also features high-tech amenities, including underfloor heating, dimmable mobile-controlled lighting, and LED-integrated wardrobes. Positioned in one of London's most coveted locations, the property is within close proximity to iconic landmarks such as Hyde Park, Harrods, and the Royal Albert Hall. This is an unparalleled opportunity to own a refined residence in South Kensington, perfectly balancing heritage charm with contemporary living.

## Location

Queen's Gate Gardens is a highly sought-after residential address located in the prestigious Queen's Gate Grid. Its prime location allows residents to enjoy the vibrant atmosphere and amenities in the area, including an excellent selection of shops, bars, and restaurants.

The property is conveniently situated near Gloucester Road Tube Station, which is serviced by the Circle, District, and Piccadilly lines, enabling excellent transport connections to explore the city with ease. Additionally, St Pancras International, directly accessed via the Piccadilly line, facilitates the convenience of international travel, providing seamless connections to various destinations. Motorists will further benefit from rapid access to Heathrow Airport via the A4.

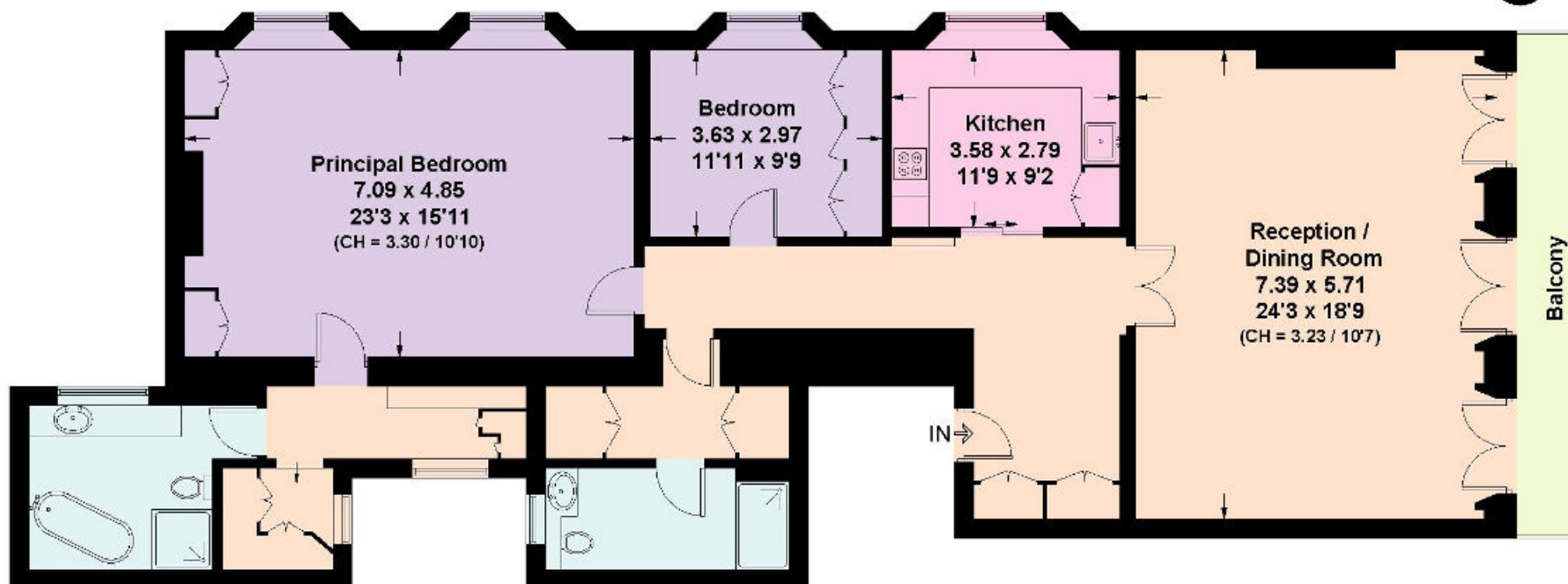




# Queen's Gate Gardens SW7

Approximate Floor Area = 155.14 sq m / 1,670 sq ft

This plan is for guidance only and must not be relied upon as a statement of fact. Attention is drawn to the important notice on the last page of the text of the Particulars.



**Second Floor**

Knight Frank

South Kensington

160 Old Brompton Road

London SW5 0BA

[knightfrank.co.uk](https://www.knightfrank.co.uk)

I would be delighted to tell you more

Rebecca Jane Higgins

020 7871 4115

[rebecca.higgins@knightfrank.com](mailto:rebecca.higgins@knightfrank.com)



Fixtures and fittings: A list of the fitted carpets, curtains, light fittings and other items fixed to the property which are included in the sale (or may be available by separate negotiation) will be provided by the Seller's Solicitors.

Important Notice: 1. Particulars: These particulars are not an offer or contract, nor part of one. You should not rely on statements by Knight Frank LLP in the particulars or by word of mouth or in writing ("information") as being factually accurate about the property, its condition or its value. Neither Knight Frank LLP nor any joint agent has any authority to make any representations about the property, and accordingly any information given is entirely without responsibility on the part of the agents, seller(s) or lessor(s). 2. Photos, Videos etc: The photographs, property videos and virtual viewings etc. show only certain parts of the property as they appeared at the time they were taken. Areas, measurements and distances given are approximate only. 3. Regulations etc: Any reference to alterations to, or use of, any part of the property does not mean that any necessary planning, building regulations or other consent has been obtained. A buyer or lessee must find out by inspection or in other ways that these matters have been properly dealt with and that all information is correct. 4. VAT: The VAT position relating to the property may change without notice. 5. To find out how we process Personal Data, please refer to our

Group Privacy Statement and other notices at <https://www.knightfrank.com/legals/privacy-statement>.

Particulars dated December 2024. Photographs and videos dated November 2024.

All information is correct at the time of going to print. Knight Frank is the trading name of Knight Frank LLP. Knight Frank LLP is a limited liability partnership registered in England and Wales with registered number OC305934. Our registered office is at 55 Baker Street, London W1U 8AN. We use the term 'partner' to refer to a member of Knight Frank LLP, or an employee or consultant. A list of members names of Knight Frank LLP may be inspected at our registered office. If you do not want us to contact you further about our services then please contact us by either calling 020 3544 0692, email to [marketing.help@knightfrank.com](mailto:marketing.help@knightfrank.com) or post to our UK Residential Marketing Manager at our registered office (above) providing your name and address.