



Kensington Mansions, London SW5



Kensington Mansions, London SW5

An impressive four bedroom lateral apartment with lift access, located on the third floor of the prestigious Kensington Mansions, a renowned redbrick period building with a porter and residents' access to beautifully maintained communal gardens.

The apartment is presented in excellent condition, showcasing elegant interiors and a thoughtfully designed layout. The expansive reception and dining area, spanning an impressive width of 41ft, is bathed in natural light. The room further benefits from elegant French doors that open out to a full-width balcony with views over the gardens below



Asking price: £3,500,000

Tenure: Share of freehold plus leasehold, approximately 975 years remaining

Service charge: approximately £10,000 per annum, reviewed every year, next review due 2026

Local authority: Royal Borough of Kensington & Chelsea

Council tax band: G





Adjacent, a bright and spacious kitchen features a central island with pendant lighting, ample cabinetry and integrated appliances. Every detail has been carefully considered to ensure both functionality and aesthetic appeal.

The principal bedroom is discreetly positioned towards the rear, complemented by extensive wardrobe storage and an en suite. Three additional double bedrooms, located toward the rear of the apartment, provide ample space for family or guests, along with two further bathrooms, which are located in the hallway.

Spanning over 2,205 sq ft, this exceptional apartment is a unique offering, combining period charm with modern living in a highly sought-after location.





Kensington Mansions is ideally situated in SW5, an attractive mansion block, renowned for its classic redbrick architecture and proximity to the best of Kensington and Chelsea. Residents benefit from being near the vibrant cafes, boutique shops, and fine dining of Gloucester Road and Earls Court.

Nearby transport links include Gloucester Road and Earls Court Underground Stations, offering excellent connectivity across London. For green spaces, Kensington Gardens and Hyde Park are nearby. This prime location encapsulates the perfect blend of elegance, convenience, and vibrant city living.

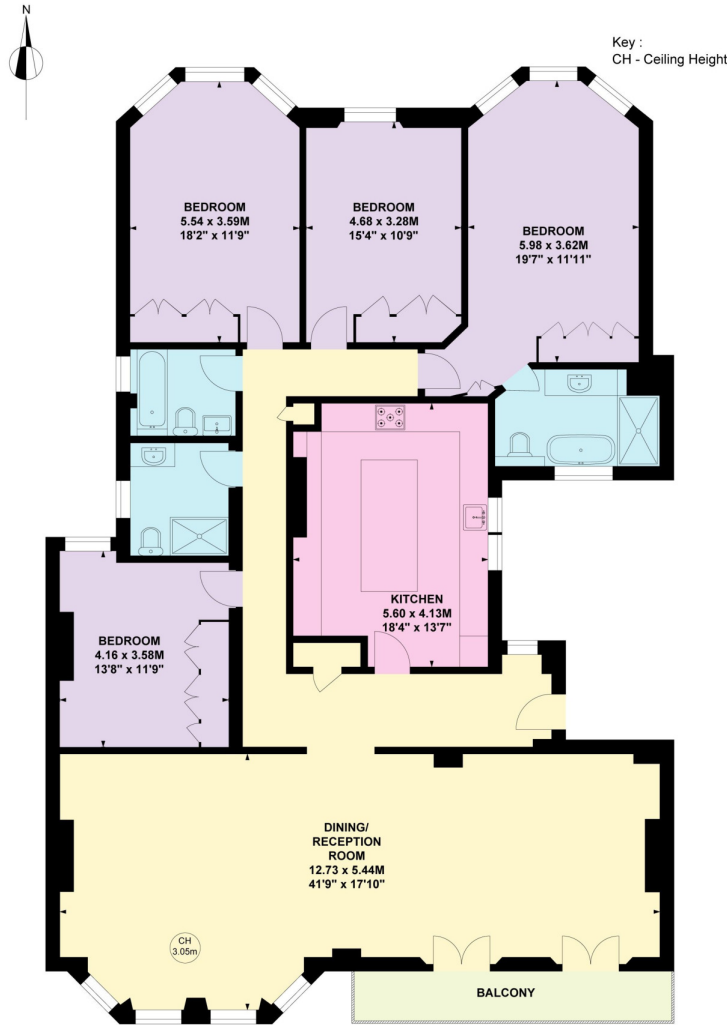


Kensington Mansions SW5

Approximate Gross Internal Floor Area

204.84 sq m / 2,205 sq ft

This plan is for guidance only and must not be relied upon as a statement of fact. Attention is drawn to the important notice on the last page of the text of the Particulars.



THIRD FLOOR

Knight Frank

South Kensington Sales

160 Old Brompton Road

London

SW5 0BA

[knightfrank.co.uk](https://www.knightfrank.co.uk)

I would be delighted to tell you more

Rebecca Jane Higgins

020 7871 4115

rebecca.higgins@knightfrank.com



Fixtures and fittings: A list of the fitted carpets, curtains, light fittings and other items fixed to the property which are included in the sale (or may be available by separate negotiation) will be provided by the Seller's Solicitors.

Important Notice: 1. Particulars: These particulars are not an offer or contract, nor part of one. You should not rely on statements by Knight Frank LLP in the particulars or by word of mouth or in writing ("information") as being factually accurate about the property, its condition or its value. Neither Knight Frank LLP nor any joint agent has any authority to make any representations about the property, and accordingly any information given is entirely without responsibility on the part of the agents, seller(s) or lessor(s). 2. Photos, Videos etc: The photographs, property videos and virtual viewings etc. show only certain parts of the property as they appeared at the time they were taken. Areas, measurements and distances given are approximate only. 3. Regulations etc: Any reference to alterations to, or use of, any part of the property does not mean that any necessary planning, building regulations or other consent has been obtained. A buyer or lessee must find out by inspection or in other ways that these matters have been properly dealt with and that all information is correct. 4. VAT: The VAT position relating to the property may change without notice. 5. To find out how we process Personal Data, please refer to our Group Privacy Statement and other notices at <https://www.knightfrank.com/legals/privacy-statement>.

Particulars dated February 2025. Photographs and videos dated September 2023.

All information is correct at the time of going to print. Knight Frank is the trading name of Knight Frank LLP. Knight Frank LLP is a limited liability partnership registered in England and Wales with registered number OC305934. Our registered office is at 55 Baker Street, London W1U 8AN. We use the term 'partner' to refer to a member of Knight Frank LLP, or an employee or consultant. A list of members names of Knight Frank LLP may be inspected at our registered office. If you do not want us to contact you further about our services then please contact us by either calling 020 3544 0692, email to marketing.help@knightfrank.com or post to our UK Residential Marketing Manager at our registered office (above) providing your name and address.