



Bolander Grove, London SW6

---



# Bolander Grove, London **SW6**

A beautifully presented three bedroom apartment with two balconies and lift access, situated in the highly sought-after Lillie Square development with 24-hour concierge security and underground parking in SW6.

Entering on the third floor to a welcoming entrance hallway, the apartment is offered in immaculate order, featuring an impressive dual-aspect reception room with floor-to-ceiling sliding doors opening out to a generous-sized balcony - perfect for al fresco dining. An open-plan kitchen leads off the reception room, including an island, premium integrated appliances and plenty of cabinetry/worktop space.



**Asking price:** £1,775,000

**Tenure:** Leasehold: approximately 989 years remaining

**Service charge:** approximately £10,144 per annum, reviewed every year, next review due 2025

**Ground rent:** approximately £650 per annum•

**Local authority:** London Borough of Hammersmith and Fulham

**Council tax band:** G

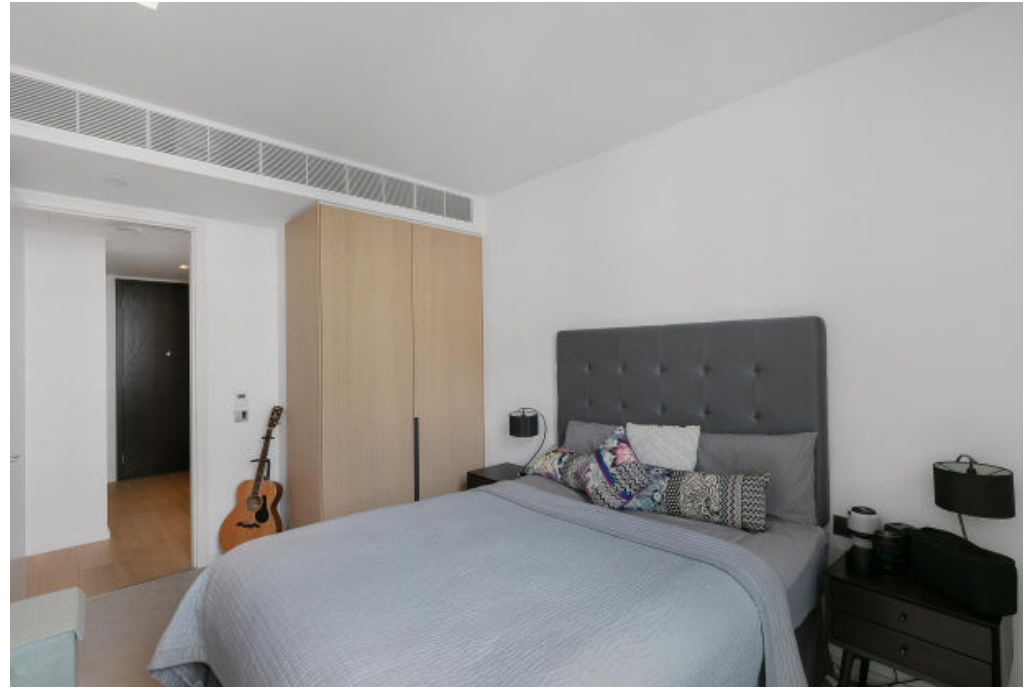


The principal bedroom is positioned towards the rear of the apartment, severed by extensive wardrobe storage, its own balcony and a large en suite bathroom. There are two further double bedrooms with ample built-in storage and a separate family bathroom adjacent to the principal bedroom.

Lillie Square redefines modern mansion block living with meticulously designed lateral apartments that offer luxury and sophistication. Each residence features bespoke kitchens with pristine worktops, premium appliances, modern bathrooms, and elegant wood floors throughout the living areas and hallways. The units further benefit from comfort cooling and underfloor heating in the living areas and bedrooms to ensure year-round comfort. Residents enjoy the convenience of a 24-hour, 5-star concierge service, backed by a 24-hour security and management team. Exclusive access to a private clubhouse further elevates the lifestyle at Lillie Square, offering a gym, pool, spa, sauna, steam room, and an elegantly appointed lounge area.











The development is close to Lillie Road and West Brompton Station and takes an architectural cue from the local mansion block aesthetic. The development is located close to the amenities of Earls Court, South Kensington, Chelsea and Fulham. The area has many transport links to the City, the West End and the M4 out to Heathrow and the West.

\*Please note that we have been unable to confirm the date of the next review for the ground rent. You should ensure that you or your advisors make your own enquiries.\*



## Bolander Grove SW6

Approximate Gross Internal Floor Area  
121.93 sq m / 1312 sq ft

This plan is for guidance only and must not be relied upon as a statement of fact. Attention is drawn to the important notice on the last page of the text of the Particulars.



Knight Frank  
South Kensington Sales  
160 Old Brompton Road  
London  
SW5 0BA  
[knightfrank.co.uk](https://www.knightfrank.co.uk)

I would be delighted to tell you more  
**Jordanna Mancina**  
020 3892 3573  
[jordanna.mancina@knightfrank.com](mailto:jordanna.mancina@knightfrank.com)

Third Floor  
1312 ft<sup>2</sup>



Fixtures and fittings: A list of the fitted carpets, curtains, light fittings and other items fixed to the property which are included in the sale (or may be available by separate negotiation) will be provided by the Seller's Solicitors.

Important Notice: 1. Particulars: These particulars are not an offer or contract, nor part of one. You should not rely on statements by Knight Frank LLP in the particulars or by word of mouth or in writing ("information") as being factually accurate about the property, its condition or its value. Neither Knight Frank LLP nor any joint agent has any authority to make any representations about the property, and accordingly any information given is entirely without responsibility on the part of the agents, seller(s) or lessor(s). 2. Photos, Videos etc: The photographs, property videos and virtual viewings etc. show only certain parts of the property as they appeared at the time they were taken. Areas, measurements and distances given are approximate only. 3. Regulations etc: Any reference to alterations to, or use of, any part of the property does not mean that any necessary planning, building regulations or other consent has been obtained. A buyer or lessee must find out by inspection or in other ways that these matters have been properly dealt with and that all information is correct. 4. VAT: The VAT position relating to the property may change without notice. 5. To find out how we process Personal Data, please refer to our Group Privacy Statement and other notices at <https://www.knightfrank.com/legals/privacy-statement>.

Particulars dated September 2024. Photographs and videos dated June 2023.

All information is correct at the time of going to print. Knight Frank is the trading name of Knight Frank LLP. Knight Frank LLP is a limited liability partnership registered in England and Wales with registered number OC305934. Our registered office is at 55 Baker Street, London W1U 8AN. We use the term 'partner' to refer to a member of Knight Frank LLP, or an employee or consultant. A list of members names of Knight Frank LLP may be inspected at our registered office. If you do not want us to contact you further about our services then please contact us by either calling 020 3544 0692, email to [marketing.help@knightfrank.com](mailto:marketing.help@knightfrank.com) or post to our UK Residential Marketing Manager at our registered office (above) providing your name and address.