

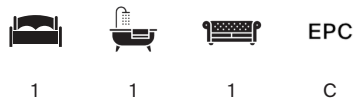


QUEEN'S GATE  
South Kensington, SW7



## QUEEN'S GATE SOUTH KENSINGTON, SW7

A well-proportioned apartment on the ground floor of a Grade II listed Victorian building, offering a practical layout and bright living space.



Local Authority: Royal Borough of Kensington & Chelsea  
Council Tax band: F

Tenure: Leasehold, approximately 157 years remaining

\*Ground rent: £150 per annum\*

Service charge: £5,256 per annum, including reserve fund contributions

Guide Price: £645,000

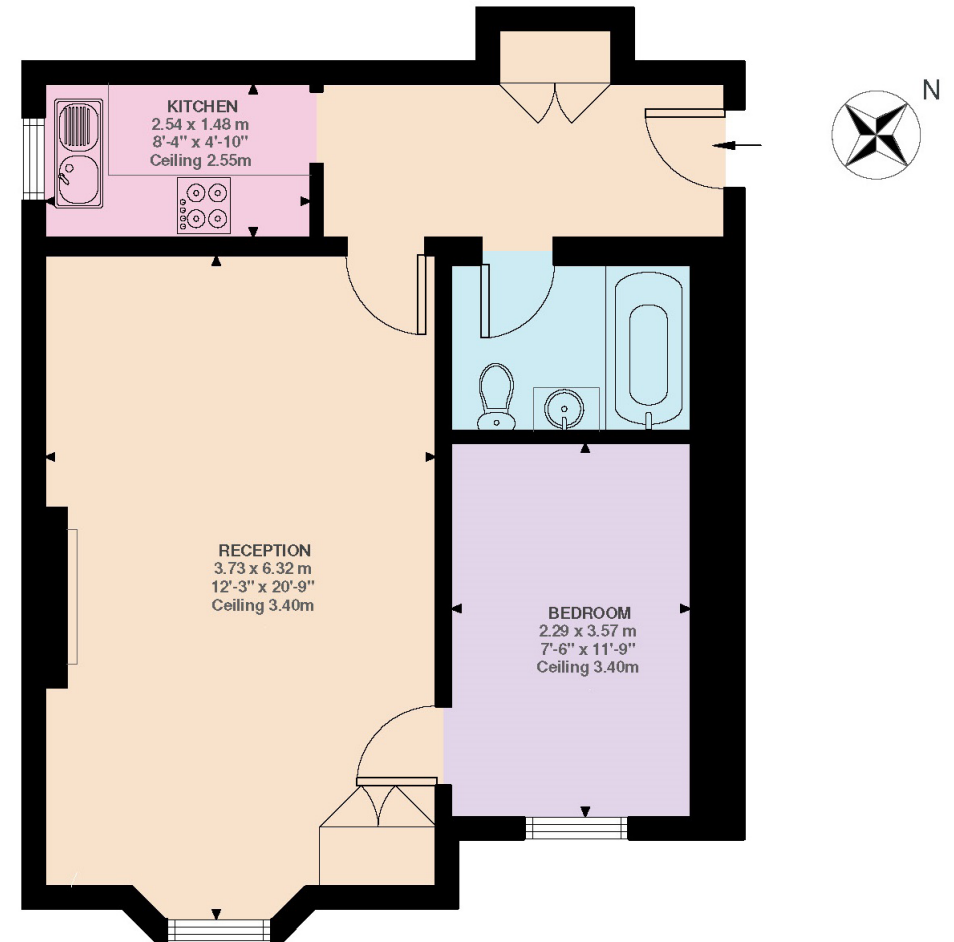


The reception room features an impressive 3.4-metre ceiling height, creating a delightful setting for both relaxation and entertaining. The separate kitchen is equipped with integrated appliances and generous worktop space. The double bedroom is adjacent to the reception room, benefiting from a south-facing aspect that fills the space with natural light. A stylish bathroom is conveniently located off the hallway. With its prime location and functional design, this apartment presents an excellent opportunity for investors or those seeking a well-placed pied-à-terre.

Queen's Gate is a sought-after residential street in South Kensington. Its prime location offers residents easy access to the area's vibrant atmosphere, shops, bars, and restaurants.

\*Please note that we have been unable to confirm the date of the next review for the ground rent. You should ensure that you or your advisors make your own enquiries.\*





Ground Floor  
507 ft<sup>2</sup>

Queen's Gate, SW7  
Approximate Gross Internal Area  
47.14 SQ.M / 507 SQ.FT

This plan is for layout guidance only. Not drawn to scale unless stated. Windows and door openings are approximate. Whilst every care is taken in the preparation of this plan, please check all dimensions, shapes and compass bearings before making any decisions reliant upon them. (ID767266)

We would be delighted  
to tell you more.

**Rana Rizk**  
+44 20 3910 9737  
[rana.rizk@knightfrank.com](mailto:rana.rizk@knightfrank.com)

**Knight Frank South Kensington Sales**  
160 Old Brompton Road  
London, SW5 0BA

[knightfrank.co.uk](https://knightfrank.co.uk)

Your partners in property

1. Particulars: These particulars are not an offer or contract, nor part of one. You should not rely on statements given by KF West Midlands Ltd., in the particulars, by word of mouth or in writing ("information") as being factually accurate about the property, its condition or its value. Neither KF West Midlands Ltd, nor any joint agent has any authority to make any representations about the property, and accordingly any information given is entirely without responsibility on the part of KF West Midlands Ltd. 2. Material Information: Please note that the material information is provided to KF West Midlands Ltd, by third parties and is provided here as a guide only. While KF West Midlands Ltd, has taken steps to verify this information, we advise you to confirm the details of any such material information prior to any offer being submitted. If we are informed of changes to this information by the seller or another third party, we will use reasonable endeavours to update this as soon as practical. 3. Photos, Videos etc: The photographs, property videos and virtual viewings etc. show only certain parts of the property as they appeared at the time they were taken. Areas, measurements and distances given are approximate only. 4. Regulations etc: Any reference to alterations to, or use of, any part of the property does not mean that any necessary planning, building regulations or other consent has been obtained. A buyer must find out by inspection or in other ways that these matters have been properly dealt with and that all information is correct. 5. Fixtures and fittings: A list of the fitted carpets, curtains, light fittings and other items fixed to the property which are included in the sale (or may be available by separate negotiation) will be provided by the Seller's Solicitors. 6. VAT: The VAT position relating to the property may change without notice. 7. To find out how we process Personal Data, please refer to our Group Privacy Statement and other notices at <https://www.knightfrank.com/legals/privacy-statement>.

Particulars dated March 2025. Photographs and videos dated March 2025. All information is correct at the time of going to print. KF West Midlands Limited, a company registered in England and Wales with registered number 13144773. Our registered office is at 9 College Hill, Shrewsbury, Shropshire, SY1 1LZ. KF West Midlands Limited is an independently owned member of the Knight Frank Network operating under licence from Knight Frank LLP