



Chelsea Square, Chelsea **SW3**

---



# Chelsea Square, Chelsea **SW3**

Chelsea Square is a prestigious low-built house in a prime position spanning approximately 5,271 sq ft with off street parking for six cars. The property has beautiful south-facing views over the Garden Square with direct access. The accommodation is well arranged, principally over four floors. There is a magnificent first floor drawing room spanning across the entire width of the house with three en suite bedrooms. The Mews house is ideal for guest or staff accommodation. The Mews is straight in front of the main house and incorporates the double garage. There is consent in place to add approximately 1,250 square feet of additional space in the basements of the main house and the mews.



**Guide price:** £19,950,000

**Tenure:** Freehold

**Local authority:** Royal Borough of Kensington and Chelsea

**Council tax band:** H















## Location

Chelsea Square is located north of the Kings Road and south of Fulham Road, west of Dovehouse Street and east of Old Church Street.

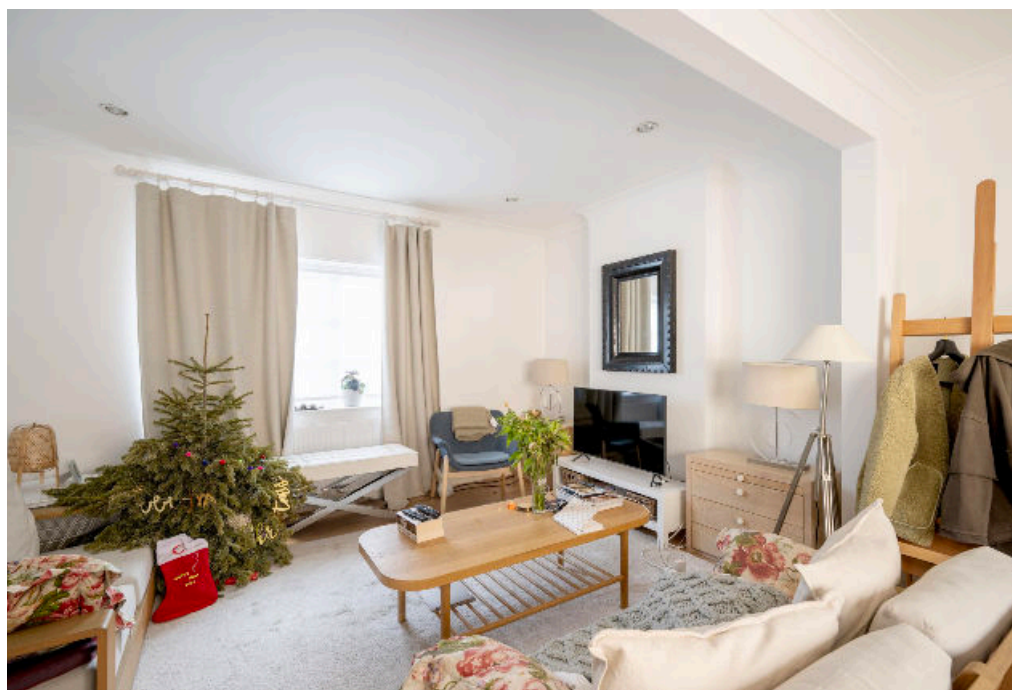
It is generally considered to be positioned in one of the best locations in Chelsea, convenient for the widest possible range of amenities and recreational facilities in prime central London.











# Chelsea Square, SW3

**Approximate Gross Internal Floor Area**  
**489.7 sq m / 5271 sq ft**

This plan is for guidance only and must not be relied upon as a statement of fact. Attention is drawn to the important notice on the last page of the text of the Particulars.



Knight Frank  
Chelsea  
352A Kings Road  
London  
SW3 5UU  
[knightfrank.co.uk](https://www.knightfrank.co.uk)

We would be delighted to tell you more  
Charles Olver  
020 7349 4302  
[charles.olver@knightfrank.com](mailto:charles.olver@knightfrank.com)  
Anna Narizzano  
020 3826 0639  
[anna.narizzano@knightfrank.com](mailto:anna.narizzano@knightfrank.com)



Fixtures and fittings: A list of the fitted carpets, curtains, light fittings and other items fixed to the property which are included in the sale (or may be available by separate negotiation) will be provided by the Seller's Solicitors.

Important Notice: 1. Particulars: These particulars are not an offer or contract, nor part of one. You should not rely on statements by Knight Frank LLP in the particulars or by word of mouth or in writing ("information") as being factually accurate about the property, its condition or its value. Neither Knight Frank LLP nor any joint agent has any authority to make any representations about the property, and accordingly any information given is entirely without responsibility on the part of the agents, seller(s) or lessor(s). 2. Photos, Videos etc: The photographs, property videos and virtual viewings etc. show only certain parts of the property as they appeared at the time they were taken. Areas, measurements and distances given are approximate only. 3. Regulations etc: Any reference to alterations to, or use of, any part of the property does not mean that any necessary planning, building regulations or other consent has been obtained. A buyer or lessee must find out by inspection or in other ways that these matters have been properly dealt with and that all information is correct. 4. VAT: The VAT position relating to the property may change without notice. 5. To find out how we process Personal Data, please refer to our Group Privacy Statement and other notices at <https://www.knightfrank.com/legals/privacy-statement>.

Particulars dated January 2024. Photographs and videos dated January 2024.

All information is correct at the time of going to print. Knight Frank is the trading name of Knight Frank LLP. Knight Frank LLP is a limited liability partnership registered in England and Wales with registered number OC305934. Our registered office is at 55 Baker Street, London W1U 8AN. We use the term 'partner' to refer to a member of Knight Frank LLP or an employee or consultant. A list of members names of Knight Frank LLP may be inspected at our registered office. If you do not want us to contact you further about our services then please contact us by either calling 020 3544 0692, email to [marketing.help@knightfrank.com](mailto:marketing.help@knightfrank.com) or post to our UK Residential Marketing Manager at our registered office (above) providing your name and address.