



Finborough Road, London **SW10**

Finborough Road, London SW10

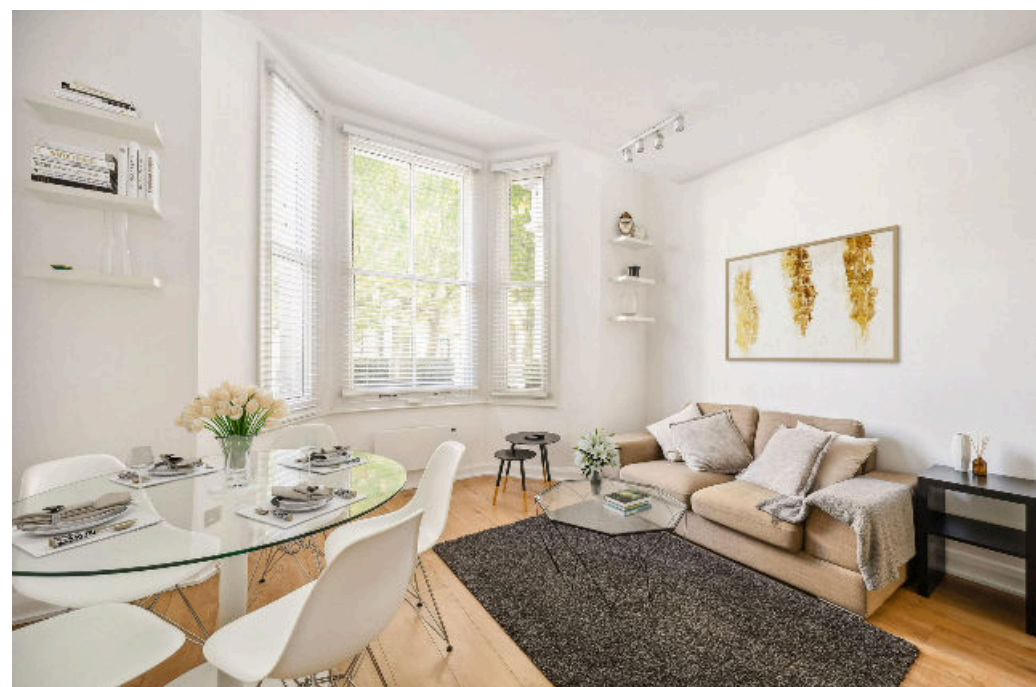
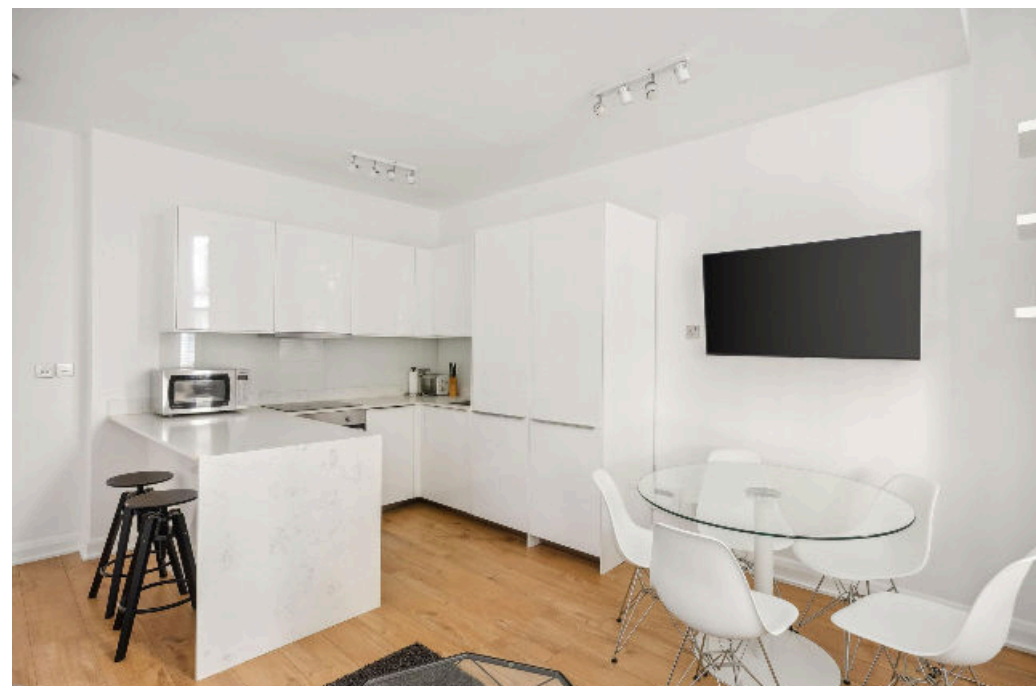
This two bedroom apartment comprises approximately 606 square feet (56 square metres) of well-balanced living.

The open-plan kitchen, living, diner benefits from a large bay window, which floods the room with light. The sleek kitchen has ample storage and a stylish breakfast bar.

The two bedrooms are peacefully situated to the rear and benefit from green views. The principal is generous in size, and the second bedroom is currently an office but could be used flexibly to suit the future owners' needs.

A modern bathroom completes the accommodation.

Excellent under-stair storage runs the length of the hallway.



Guide price: £715,000

Tenure: Leasehold: approximately 162 years remaining

Service charge: £3,458.12 per annum, reviewed every 1 year, next review due 2025

Local authority: Royal Borough of Kensington and Chelsea

Council tax band: D

Location

This flat is ideally situated for the supermarkets and cafes of the Fulham Road and the boutique shops, bars and restaurants of Earls Court. The iconic Kings Road slightly further beyond.

The Thames Path provides excellent walking and cycling routes, as does the nearby Brompton Cemetery. Battersea Park is within easy reach, with its boating lake, lakeside cafes and wide range of sports facilities.

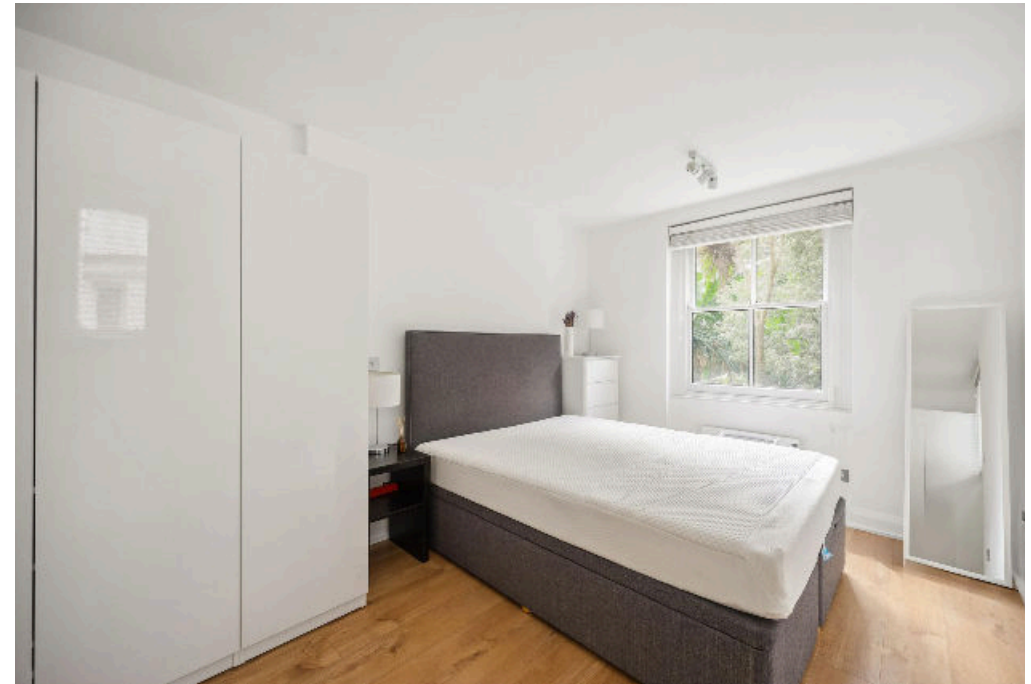
The regeneration of Earl's Court will result in further amenities and ten acres of park and open land.

West Brompton Station (District line and Overground) is 0.5 miles away, Earls Court Underground Station (Piccadilly, and District lines) is 0.6 miles away and Gloucester Road Underground Station (Piccadilly, District and Circle lines) is 0.9 miles away.

The property is also well served by Chelsea and Westminster Hospital which is 0.4 miles away.

The immediate vicinity is served by regular bus services.

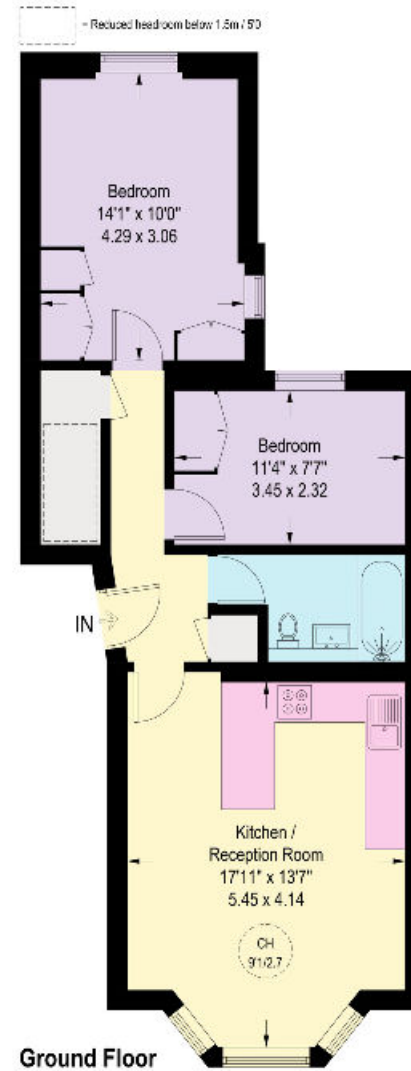
*All distances are approximate.



Finborough Road, SW10

Approximate Gross Internal Floor Area
56.3 sq m / 606 sq ft

This plan is for guidance only and must not be relied upon as a statement of fact. Attention is drawn to the important notice on the last page of the text of the Particulars.



Knight Frank
Chelsea
352A Kings Road
London
SW3 5UU
[knightfrank.co.uk](https://www.knightfrank.co.uk)

We would be delighted to tell you more
Claire Mengham CA
020 3978 2462
claire.mengham@knightfrank.com



Fixtures and fittings: A list of the fitted carpets, curtains, light fittings and other items fixed to the property which are included in the sale (or may be available by separate negotiation) will be provided by the Seller's Solicitors.

Important Notice: 1. Particulars: These particulars are not an offer or contract, nor part of one. You should not rely on statements by Knight Frank LLP in the particulars or by word of mouth or in writing ("information") as being factually accurate about the property, its condition or its value. Neither Knight Frank LLP nor any joint agent has any authority to make any representations about the property, and accordingly any information given is entirely without responsibility on the part of the agents, seller(s) or lessor(s). 2. Photos, Videos etc: The photographs, property videos and virtual viewings etc. show only certain parts of the property as they appeared at the time they were taken. Areas, measurements and distances given are approximate only. 3. Regulations etc: Any reference to alterations to, or use of, any part of the property does not mean that any necessary planning, building regulations or other consent has been obtained. A buyer or lessee must find out by inspection or in other ways that these matters have been properly dealt with and that all information is correct. 4. VAT: The VAT position relating to the property may change without notice. 5. To find out how we process Personal Data, please refer to our Group Privacy Statement and other notices at <https://www.knightfrank.com/legals/privacy-statement>. Particulars dated October 2024. Photographs and videos dated October 2024.

All information is correct at the time of going to print. Knight Frank is the trading name of Knight Frank LLP. Knight Frank LLP is a limited liability partnership registered in England and Wales with registered number OC305934. Our registered office is at 55 Baker Street, London W1U 8AN. We use the term 'partner' to refer to a member of Knight Frank LLP or an employee or consultant. A list of members names of Knight Frank LLP may be inspected at our registered office. If you do not want us to contact you further about our services then please contact us by either calling 020 3544 0692, email to marketing.help@knightfrank.com or post to our UK Residential Marketing Manager at our registered office (above) providing your name and address.