



Ifield Road, London **SW10**

Ifield Road, London SW10

The building is located on a one-way section of Ifield Road ensuring a tranquil setting. Entering on the ground floor one will find the second bedroom with en suite shower room and separate WC. The bedroom further benefits from direct access to a large, west-facing garden with mature planted borders and ample patio space for entertaining. Down the internal staircase opens up to a generous, open-plan reception room, dining area and kitchen with additional access to the garden. The principal bedroom is also found on this floor including a large en suite bathroom with walk-in shower and separate bath. Off the reception room, the flat further benefits from a fully fitted utility room, home office space and separate WC.



Guide price: £1,245,000

Tenure: Leasehold: approximately 92 years remaining

Service charge: £2,500 per annum, reviewed every 1 year, next review due 2024

Local authority: Royal Borough of Kensington and Chelsea

Council tax band: D



Location

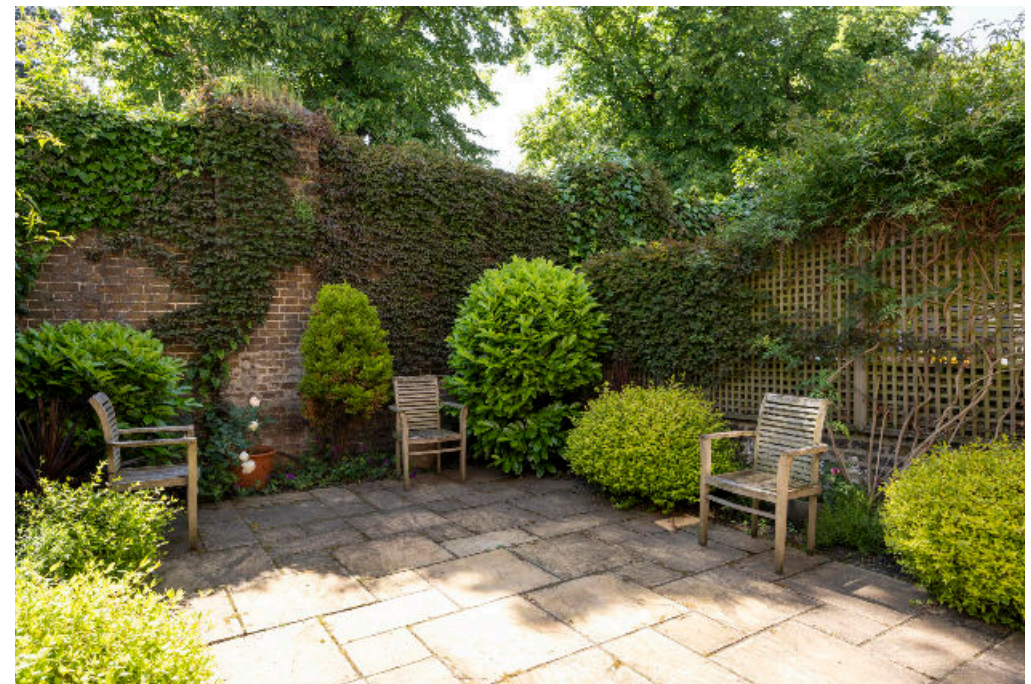
Ifield Road is a peaceful, residential street in Chelsea.

A wide range of amenities is within easy walking distance of the apartment, which include supermarkets, independent shops, cafes and restaurants on Chelsea's Fulham Road and also towards Earls Court .

Earls Court Underground Station (Piccadilly, District and Circle lines) is 0.5 miles away, with West Brompton Station (District line and Overground) 0.3 miles away.

The immediate vicinity is served by a regular bus service and nearby Brompton Cemetery provides pleasant walking and cycling routes.

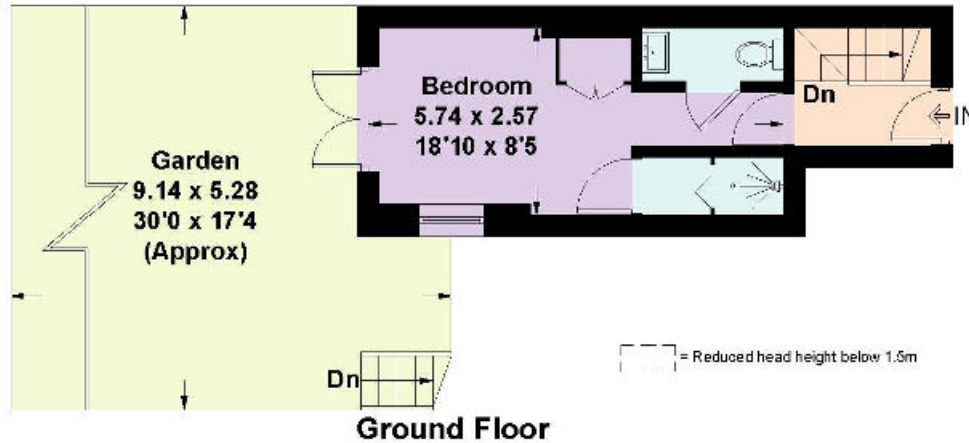
*All distances are approximate.



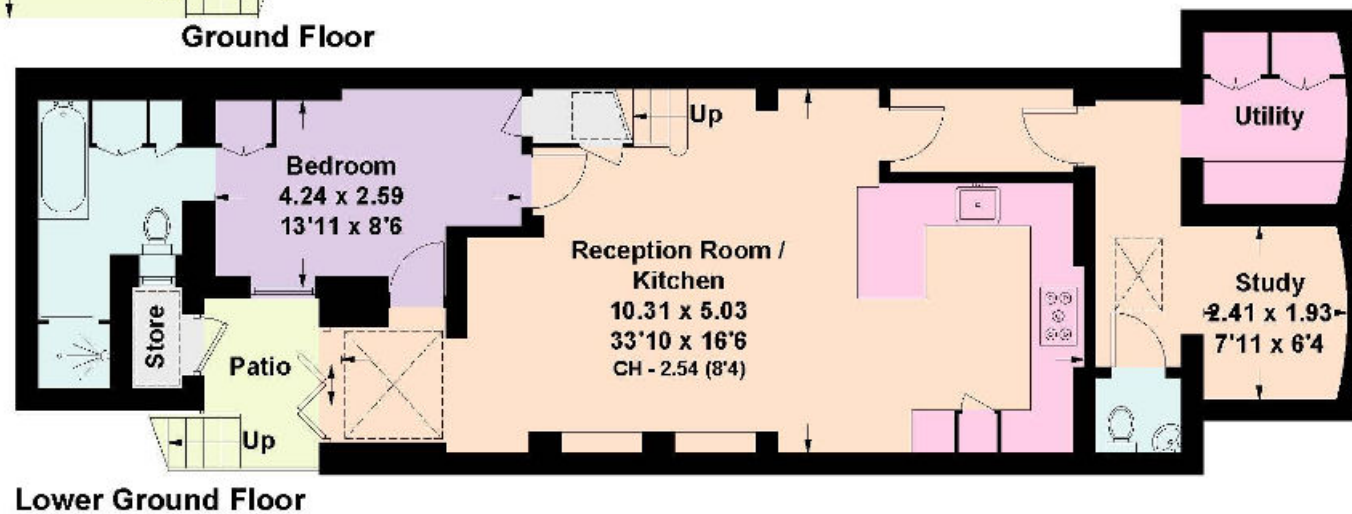


Ifield Road, SW10

Approximate Floor Area = 100.8 sq m / 1085 sq ft
Including Limited Use Area (1.5 sq m / 16 sq ft)
(Including External Store)



This plan is for guidance only and must not be relied upon as a statement of fact. Attention is drawn to the important notice on the last page of the text of the Particulars.



Knight Frank
Chelsea
352A Kings Road
London
SW3 5UU
[knightfrank.co.uk](https://www.knightfrank.co.uk)

We would be delighted to tell you more
Claire Mengham
020 3978 2462
claire.mengham@knightfrank.com



Fixtures and fittings: A list of the fitted carpets, curtains, light fittings and other items fixed to the property which are included in the sale (or may be available by separate negotiation) will be provided by the Seller's Solicitors.

Important Notice: 1. Particulars: These particulars are not an offer or contract, nor part of one. You should not rely on statements by Knight Frank LLP in the particulars or by word of mouth or in writing ("information") as being factually accurate about the property, its condition or its value. Neither Knight Frank LLP nor any joint agent has any authority to make any representations about the property, and accordingly any information given is entirely without responsibility on the part of the agents, seller(s) or lessor(s). 2. Photos, Videos etc: The photographs, property videos and virtual viewings etc. show only certain parts of the property as they appeared at the time they were taken. Areas, measurements and distances given are approximate only. 3. Regulations etc: Any reference to alterations to, or use of, any part of the property does not mean that any necessary planning, building regulations or other consent has been obtained. A buyer or lessee must find out by inspection or in other ways that these matters have been properly dealt with and that all information is correct. 4. VAT: The VAT position relating to the property may change without notice. 5. To find out how we process Personal Data, please refer to our Group Privacy Statement and other notices at <https://www.knightfrank.com/legals/privacy-statement>. Particulars dated May 2024. Photographs and videos dated May 2024.

All information is correct at the time of going to print. Knight Frank is the trading name of Knight Frank LLP. Knight Frank LLP is a limited liability partnership registered in England and Wales with registered number OC305934. Our registered office is at 55 Baker Street, London W1U 8AN. We use the term 'partner' to refer to a member of Knight Frank LLP or an employee or consultant. A list of members names of Knight Frank LLP may be inspected at our registered office. If you do not want us to contact you further about our services then please contact us by either calling 020 3544 0692, email to marketing.help@knightfrank.com or post to our UK Residential Marketing Manager at our registered office (above) providing your name and address.