



Cheyne Walk, London **SW3**



Cheyne Walk, London SW3

This spectacular fourth-floor (with lift) portered apartment spans approximately 2,341 sq ft with three/four bedrooms and front-facing river views. The apartment benefits from ample living space, high ceilings, and an abundance of natural light and all of the accommodation being on a single floor. The apartment benefits from interconnecting reception rooms at the front of the building, a charming eat-in kitchen, three/four double bedrooms and two bathrooms. Few properties within Chelsea can offer a combination of views and spacious accommodation. A key attribute of the building is the communal roof terrace, which provides residents with southerly views over the River Thames, including the iconic Albert and Battersea Bridges, offering a tranquil sanctuary.



Guide price: £4,750,000

Tenure: Share of freehold plus leasehold, approximately 959 years remaining

Service charge: £16,585.54 per annum, reviewed every 1 year, next review due 2025

Ground rent: Peppercorn

Local authority: Royal Borough of Kensington and Chelsea

Council tax band: H





This prestigious red-brick mansion block, built in the 1880s, is named after historian, mathematician and sage Thomas Carlyle and has since become synonymous with a rich legacy of literary residents.

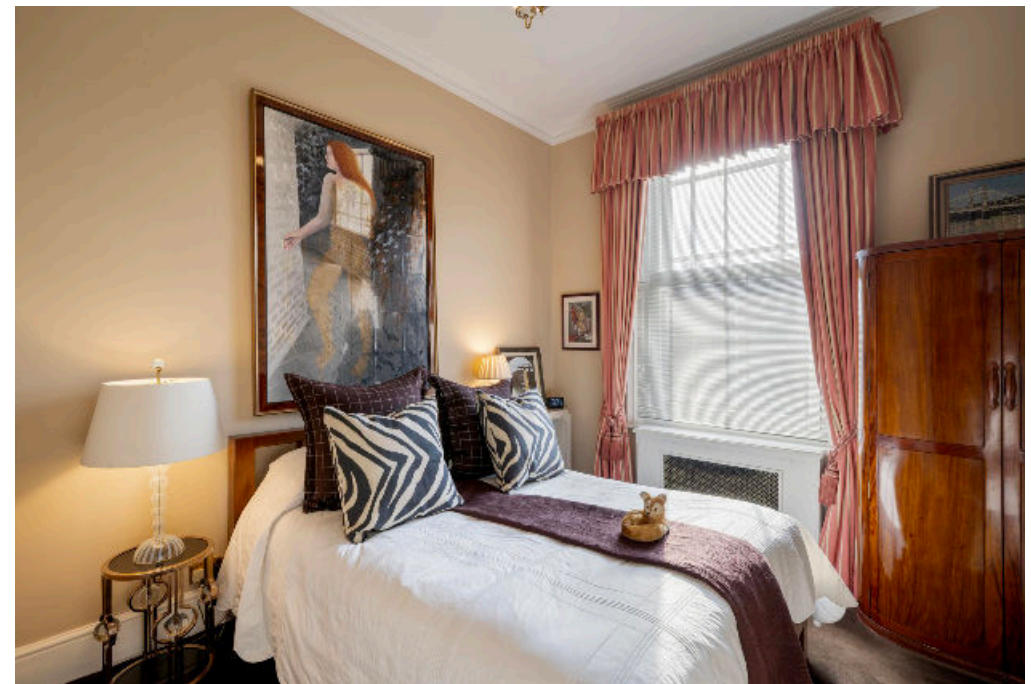
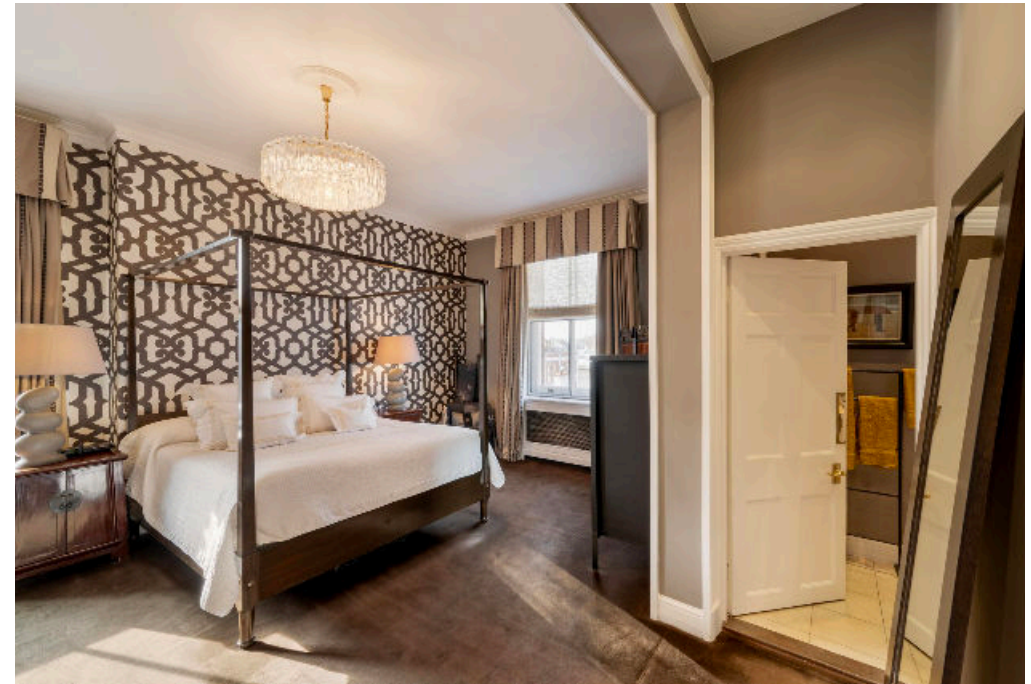
Location

Cheyne Walk runs along the north bank of the River Thames and is one of London's most significant and distinguished streets.

The King's Road, with its excellent selection of shops, restaurants and bars, is a few minutes' walk from Carlyle Mansions. Sloane Square, Battersea Park, and the Chelsea Physic Garden are also nearby.

Several excellent schools are nearby, including The Hampshire School, Chelsea and Garden House School on Duke of York's Square.

Sloane Square and South Kensington Underground stations are all within walking distance and run District, Circle and Piccadilly Line services. The A4 provides quick access by car to Heathrow Airport (approximately 35 minutes) and the southwest of England.





Carlyle Mansions, SW3

Approximate Floor Area = 217.5 sq m / 2341 sq ft
Including Limited Use Area (0.6 sq m / 6 sq ft)



Fourth Floor

This plan is for guidance only and must not be relied upon as a statement of fact. Attention is drawn to the important notice on the last page of the text of the Particulars.

Knight Frank

Chelsea

352A Kings Road

London

SW3 5UU

[knightfrank.co.uk](https://www.knightfrank.co.uk)

We would be delighted to tell you more

Charles Olver

020 7349 4302

charles.olver@knightfrank.com



Fixtures and fittings: A list of the fitted carpets, curtains, light fittings and other items fixed to the property which are included in the sale (or may be available by separate negotiation) will be provided by the Seller's Solicitors.

Important Notice: 1. Particulars: These particulars are not an offer or contract, nor part of one. You should not rely on statements by Knight Frank LLP in the particulars or by word of mouth or in writing ("information") as being factually accurate about the property, its condition or its value. Neither Knight Frank LLP nor any joint agent has any authority to make any representations about the property, and accordingly any information given is entirely without responsibility on the part of the agents, seller(s) or lessor(s). 2. Photos, Videos etc: The photographs, property videos and virtual viewings etc. show only certain parts of the property as they appeared at the time they were taken. Areas, measurements and distances given are approximate only. 3. Regulations etc: Any reference to alterations to, or use of, any part of the property does not mean that any necessary planning, building regulations or other consent has been obtained. A buyer or lessee must find out by inspection or in other ways that these matters have been properly dealt with and that all information is correct. 4. VAT: The VAT position relating to the property may change without notice. 5. To find out how we process Personal Data, please refer to our Group Privacy Statement and other notices at <https://www.knightfrank.com/legals/privacy-statement>. Particulars dated March 2024. Photographs and videos dated March 2024.

All information is correct at the time of going to print. Knight Frank is the trading name of Knight Frank LLP. Knight Frank LLP is a limited liability partnership registered in England and Wales with registered number OC305934. Our registered office is at 55 Baker Street, London W1U 8AN. We use the term 'partner' to refer to a member of Knight Frank LLP or an employee or consultant. A list of members names of Knight Frank LLP may be inspected at our registered office. If you do not want us to contact you further about our services then please contact us by either calling 020 3544 0692, email to marketing.help@knightfrank.com or post to our UK Residential Marketing Manager at our registered office (above) providing your name and address.