



Bassingham Road, SW18

£500,000

A well presented Victorian conversation flat with a private rear garden.

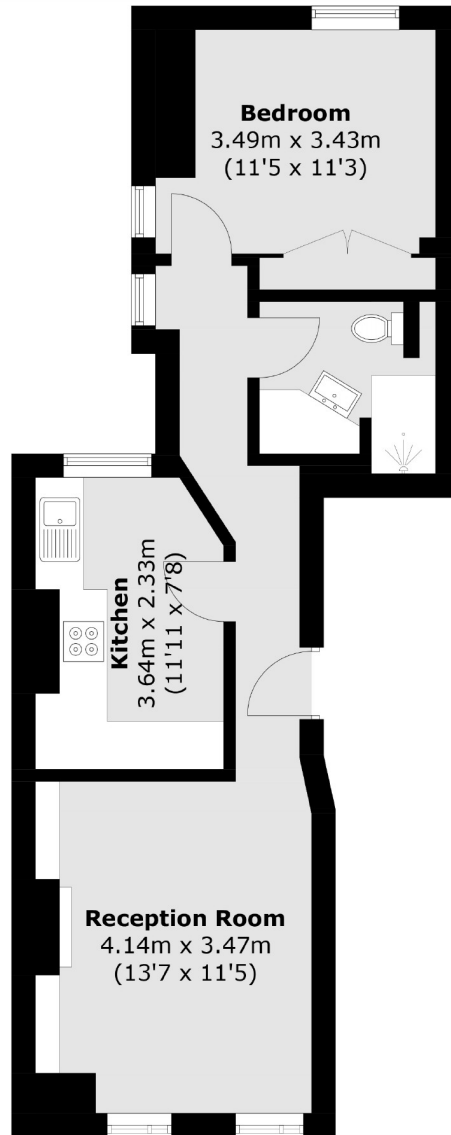
- One Double Bedroom
- Victorian Property
- Residential Location
- No Onward Chain
- Period Features
- Private Garden



The property is in good condition throughout. Accommodation comprises; reception room with feature bay window, generous double bedroom, separate kitchen with ample storage, bathroom and a private rear garden.

Bassingham Road is part of a grid of quiet residential roads of similar style of properties, which are consistently sought after being a short distance of central Earlsfield. This location is very well served by excellent transport links, restaurants, bars, leisure and shopping facilities all within close proximity of the property. Earlsfield mainline station is a distance of 0.6 mile.





Total area (approx.): 45.7 sq. m (491.9 sq. ft)

Jacksons Earlsfield
372-374 Garratt Lane
Earlsfield
London
SW18 4ES
020 8971 7979

Energy Rating: We aim to make our particulars both accurate and reliable. However they are not guaranteed; nor do they form part of an offer or contract. If you require clarification on any points then please contact us, especially if you're traveling some distance to view. Please note that appliances and heating systems have not been tested and therefore no warranties can be given as to their good working order.