



Summerley Street, SW18

£575,000

A two double bedroom, ground floor, Victorian conversion flat with a private garden and a basement.

- Private Rear Garden
- Share of Freehold
- Ground Floor
- Chain Free
- Sought After Location
- Basement

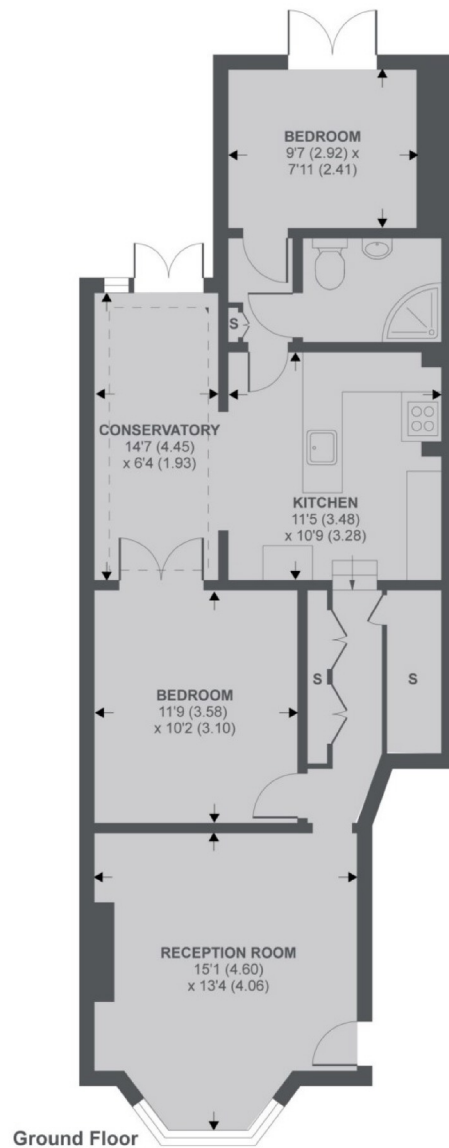


Accommodation comprises; generous reception room, two spacious bedrooms, family bathroom and a large kitchen/dining room leading to a private rear garden.

Located in one of Earlsfield's most prestigious roads and within easy reach of the mainline railway station and Garratt Lane's array of amenities.







APPROX. GROSS INTERNAL FLOOR AREA 750 SQ FT 69.6 SQ METRES

Copyright nichecom.co.uk 2019 REF : 534845

Jacksons Earlsfield
372-374 Garratt Lane
Earlsfield
London
SW18 4ES
020 8971 7979

Energy Rating: We aim to make our particulars both accurate and reliable. However they are not guaranteed; nor do they form part of an offer or contract. If you require clarification on any points then please contact us, especially if you're traveling some distance to view. Please note that appliances and heating systems have not been tested and therefore no warranties can be given as to their good working order.