

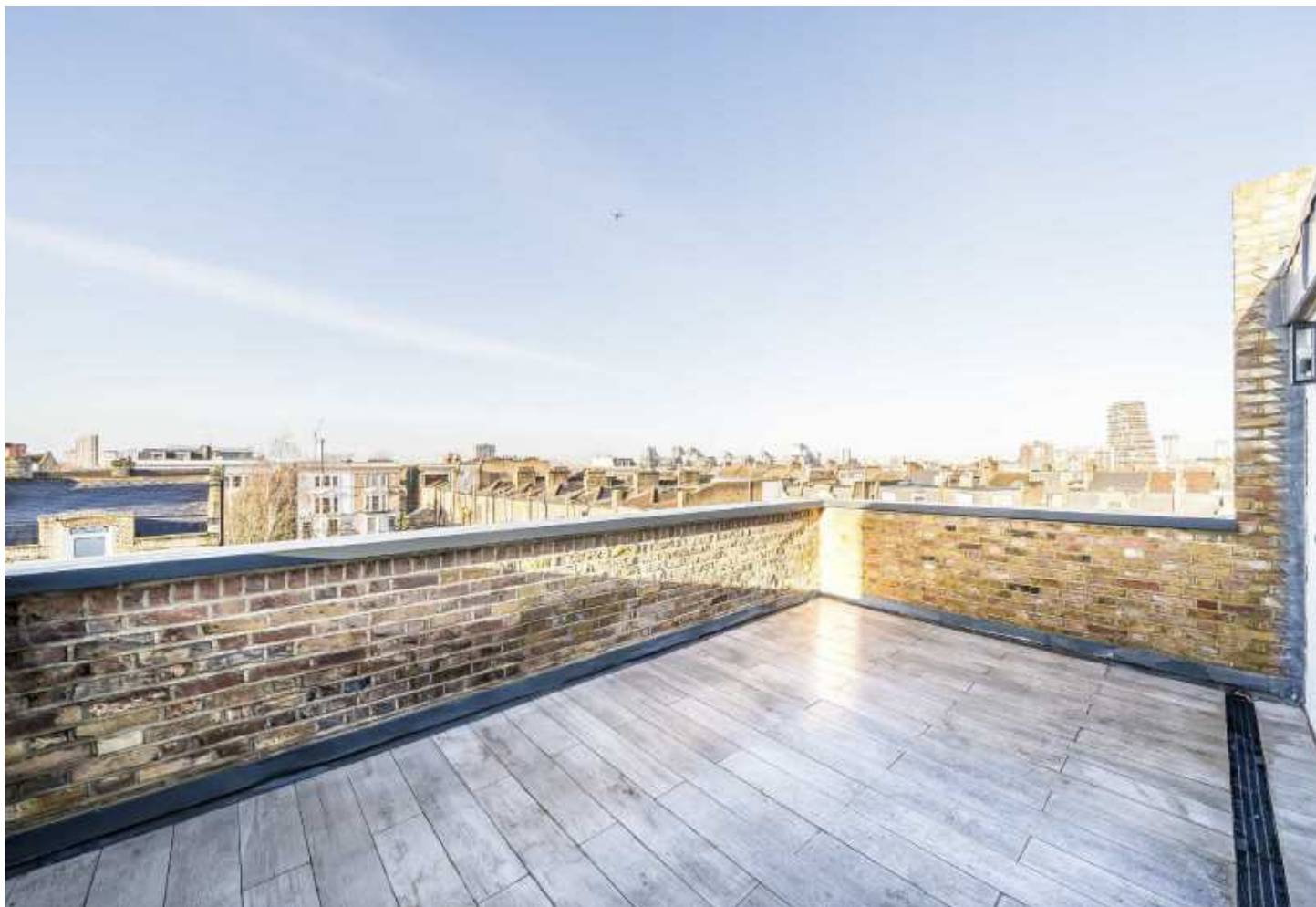


BRUSSELS ROAD, SW11

£1,175,000

- Three generous bedrooms
- Open-plan kitchen/living
- Share of freehold
- Large roof terrace
- Close to transport links
- Energy rating: D





## ABOUT THE HOME

This stunning, recently renovated split-level flat offers three spacious double bedrooms, a beautiful open plan kitchen and reception room and an expansive roof terrace with views across the London skyline.

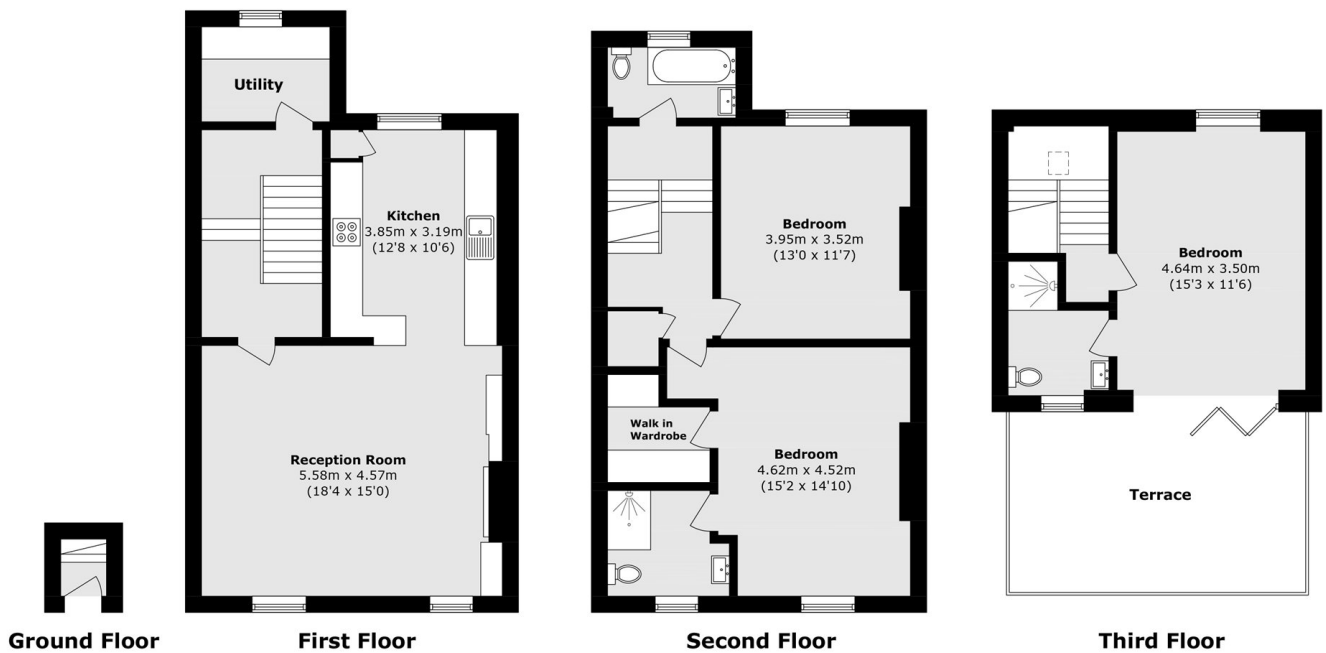
Accommodation is arranged over three floors. The first floor comprises a useful utility room and a spacious open-plan living area with a contemporary kitchen fitted with top-of-the-range appliances. Stairs lead to the second floor, which offers two generous double bedrooms and a family bathroom; the principal bedroom benefits from an en-suite bathroom and a walk-in wardrobe. The third floor provides an additional double bedroom with its own en-suite and opens directly onto a beautiful roof terrace, creating an exceptional entertaining space with uninterrupted views across the London skyline.

Located seconds away from the amenities on St John's Hill, this property also benefits from being walking distance from great transport links at Clapham Junction.









Total area (approx.): 133.7 sq. m (1439.1 sq. ft)  
Terrace area (approx.): 18.4 sq. m (198 sq. ft)

#### JACKSONS EARLSFIELD

372-374 Garratt Lane,  
Earlsfield, London, SW18 4ES  
Sales: 020 8971 7979  
Lettings: 020 8971 7070

Energy Rating: D We aim to make our particulars both accurate and reliable. However they are not guaranteed; nor do they form part of an offer or contract. If you require clarification on any points then please contact us, especially if you're traveling some distance to view. Please note that appliances and heating systems have not been tested and therefore no warranties can be given as to their good working order.